



Universiteit
Leiden
The Netherlands

Small scale kinematics of massive star-forming cores

Wang, K.S.

Citation

Wang, K. S. (2013, December 10). *Small scale kinematics of massive star-forming cores*. Retrieved from <https://hdl.handle.net/1887/22846>

Version: Corrected Publisher's Version

License: [Licence agreement concerning inclusion of doctoral thesis in the Institutional Repository of the University of Leiden](#)

Downloaded from: <https://hdl.handle.net/1887/22846>

Note: To cite this publication please use the final published version (if applicable).

Cover Page



Universiteit Leiden



The handle <http://hdl.handle.net/1887/22846> holds various files of this Leiden University dissertation.

Author: Wang, Kuo-Song

Title: Small scale kinematics of massive star-forming cores

Issue Date: 2013-12-10

Chapter 4

Kinematics of the inner thousand AU region around the young massive star AFGL 2591–VLA3: a massive disk candidate?

K.-S. Wang, F. F. S. van der Tak, and M. R. Hogerheijde
A&A, 543, A22 (2012)

Abstract

Context. Recent detections of disks around young high-mass stars support the idea of massive star formation through accretion rather than coalescence, but the detailed kinematics in the equatorial region of the disk candidates is not well known, which limits our understanding of the accretion process.

Aims. This paper explores the kinematics of the gas around a young massive star with millimeter-wave interferometry to improve our understanding of the formation of massive stars through accretion.

Methods. We use Plateau de Bure interferometric images to probe the environment of the nearby (~ 1 kpc) and luminous ($\sim 20000 L_{\odot}$) high-mass ($10\text{--}16 M_{\odot}$) young star AFGL 2591–VLA3 in continuum and in lines of HDO, H_2^{18}O and SO_2 in the 115 and 230 GHz bands. Radiative transfer calculations are employed to investigate the kinematics of the source.

Results. At $\sim 0.5''$ (500 AU) resolution, the line images clearly resolve the velocity field of the central compact source (diameter of ~ 800 AU) and show linear velocity gradients in the northeast-southwest direction. Judging from the disk-outflow geometry, the observed velocity gradient results from rotation and radial expansion in the equatorial region of VLA3. Radiative transfer calculations suggest that the velocity field is consistent with sub-Keplerian rotation plus Hubble-law like expansion. The line profiles of the observed molecules suggest a layered structure, with HDO emission arising from the disk mid-plane, H_2^{18}O from the warm mid-layer, and SO_2 from the upper disk.

Conclusions. We propose AFGL 2591–VLA3 as a new massive disk candidate, with peculiar kinematics. The rotation of this disk is sub-Keplerian, probably due to magnetic braking, while the stellar wind may be responsible for the expansion of the disk. The expansion motion may also be an indirect evidence of disk accretion in the very inner region because of the conservation of angular momentum. The sub-Keplerian rotation discovered in our work suggests that AFGL 2591–VLA3 may be a special case linking transition of velocity field of massive disks from pure Keplerian rotation to solid-body rotation though definitely more new detections of circumstellar disks around high-mass YSOs are required to examine this hypothesis. Our results support the idea that early B-type stars could be formed with a circumstellar disk from the point of view of the disk-outflow geometry, though the accretion processes in the disk need to be further investigated.

4.1 Introduction

Massive stars play an important role in cycling and mixing material between stars and the interstellar medium in galaxies. However, our understanding of how high-mass stars ($M \geq 8 M_{\odot}$) form is still far from complete (Zinnecker & Yorke 2007). Observationally, it is challenging to gain information from high-mass young stellar objects (YSOs) because high-mass stars usually form in groups at large distances (typically a few kpc), requiring high angular resolution to resolve individual sources. High-mass YSOs are embedded in regions with high extinctions ($\sim 10\text{--}100 A_v$) for $\sim 15\%$ of their lifetime, where complex processes, such as gravitational interaction, powerful outflows and stellar winds, high accretion rates and ionizing radiation fields make the interpretation of observations difficult. Moreover, high-mass YSOs evolve very fast ($\sim 10^5$ yrs) and reach the main sequence while still in the embedded phase. Structures such as circumstellar disks have an even shorter lifetime and are harder to detect.

Accretion via a circumstellar disk is suggested to be the most effective way to overcome radiative pressure and build up a high-mass star (e.g., Krumholz et al. 2009). The detection of massive bipolar outflows with high mass loss rates of $\sim 10^{-4} M_{\odot} \text{ yr}^{-1}$ around young high-mass stars implies the presence of circumstellar disks with comparable mass accretion rates (e.g., Henning et al. 2000; Beuther et al. 2002; Zhang et al. 2005). To date, only a dozen or so B-type young stars have been proposed to have circumstellar disks (e.g., Cesaroni et al. 1997, 1999, 2006; Shepherd & Kurtz 1999; Beuther et al. 2005), with disk masses less than or comparable to the masses of the host stars. In contrast, around young O-type stars, only large rotating toroids are found with masses greater than stellar masses (Beltrán et al. 2005; Furuya et al. 2008).

The presence of circumstellar disks around low-mass young stars is firmly established, and our current observational and theoretical understanding is reviewed by Williams & Cieza (2011) and Armitage (2011), respectively. In contrast, the applicability of a scaled-up version of low-mass star formation via disk accretion for massive stars has not been firmly established (Zinnecker & Yorke 2007), although promising cases have been reported (e.g., Keto & Zhang 2010). Clearly, more observational work is needed to establish the kinematics of material associated with high-mass YSOs.

In this paper, we present observations of massive disk candidate, AFGL 2591–VLA3, a young early B-type star in the Cygnus X region. The distance to this object is uncertain, with reported values ranging from 0.5 to 2 kpc (0.5–2 kpc as discussed in van der Tak et al. 1999) and recent measurements of water masers even suggesting 3.3 kpc (Rygl et al. 2011). In this work, we assume a distance of 1 kpc in order to aid comparison with previous publications and discuss how our conclusions change for a distance of 0.5 or 3 kpc. At 1 kpc, the total luminosity of AFGL 2591 is $\sim 2 \times 10^4 L_{\odot}$ (Lada et al. 1984). Compact radio emission is associated with the source (named as VLA1, VLA2 and VLA3; Campbell 1984; Trinidad et al. 2003). Modeling of its free-free emission implies the stellar mass is about $16 M_{\odot}$ (van der Tak & Menten 2005). An envelope mass of only $40 M_{\odot}$ within 30000 AU around the source is derived through comprehensive radiative transfer modeling of molecular lines by van der Tak et al. (1999).

The geometry of the system can be derived from bipolar ^{12}CO outflows at arcminute scale, which extend in east (red)-west (blue) direction (position angle (P.A.) $\sim 270^{\circ}$ – 325°) observed at resolutions of $14''$ to $21''$ by Mitchell et al. (1992) and Hasegawa & Mitchell (1995). Observations of ^{13}CO at resolution of $14''$ suggests that the P.A. of the outflow is about 280° (van der Tak et al. 1999), confirmed by K -band bispectrum speckle imaging of AFGL 2591 at a resolution of $\sim 0.2''$ showing multiple loops on the western side of the source with P.A. $\sim 260^{\circ}$ (Preibisch et al. 2003). Precession of the outflow axis is also implied. Dense gas in the outflow walls traced by CS and HCN shows a consistent morphology (Bruderer et al. 2009). Based on this orientation of the outflow, a north-south (P.A. $\sim 0^{\circ}$) orientation of the equatorial plane of AFGL 2591–VLA3 is inferred.

Observations of HDO $1_{1,0}$ – $1_{1,1}$, H_2^{18}O $3_{1,3}$ – $2_{2,0}$ and SO_2 $12_{0,12}$ – $11_{1,11}$ with the Plateau de Bure interferometer (PdBI) of the Institut de Radio Astronomie Millimétrique (IRAM)¹ reveal a velocity gradient in the north(east)-south(west) direction across a barely resolved source with a diameter of ~ 800 AU, suggestive of a circumstellar disk (van der Tak et al. 2006). However, the kinematics could not be studied due to the limited angular resolution ($\sim 1''$). Here we present new PdBI observations toward AFGL 2591 at a higher resolution

¹IRAM is supported by INSU/CNRS (France), MPG (Germany) and IGN (Spain).

of $\sim 0.5''$ (~ 500 AU at 1 kpc), which resolve the kinematics. This paper is organized as follows. Section 4.2 summarizes the PdBI observations and data reduction. Section 4.3 presents the results. In Sect. 4.4, we describe a simple model of the kinematics. Discussions and conclusions are given in Sect. 4.5 and Sect. 4.6, respectively.

4.2 Observations

The source AFGL 2591 was observed with PdBI in 2006–2007 in 4 tracks. The 3 mm receiver was tuned to cover HDO $1_{1,0}-1_{1,1}$ at 80578.3 MHz (hereafter HDO) and the 1.3 mm receiver was tuned to cover H_2^{18}O $3_{1,3}-2_{2,0}$ at 203407.5 MHz (hereafter H_2^{18}O) and SO_2 $12_{0,12}-11_{1,11}$ at 203391.6 MHz (hereafter SO_2). Table 4.1 presents a log of the observations and Table 4.2 summarizes the observed lines. The combined projected baselines range from 26 k λ ($\sim 10''$) to 206 k λ in length at 3 mm and from 48 k λ ($\sim 5''$) to 525 k λ in length at 1.3 mm. The phase tracking center was chosen at $\alpha(2000) = 20^{\text{h}}29^{\text{m}}24^{\text{s}}.87$, $\delta(2000) = 40^{\circ}11'19''.50$. The nominal LSR velocity adopted for observations was -5.5 km s $^{-1}$. The quasars 2005+403 and 2013+370, which are about 5° away from AFGL 2591, were frequently observed for phase and gain calibrations in all four observations. 3C273, 3C345 and 3C454.3 were used as the bandpass calibrators, and MWC349 with a total flux density of ~ 1.3 Jy at 203.4 GHz during the time of the observations, as flux calibrator. The flux error is estimated to be within 20%. The spectral resolutions are 39.0625 kHz per channel or 0.145 km s $^{-1}$ per channel at 3 mm band, and 78.125 kHz per channel or 0.115 km s $^{-1}$ per channel at 1.3 mm band. Data reduction was conducted at the IRAM headquarters in Grenoble, using the GILDAS² software.

²<http://www.iram.fr/IRAMFR/GILDAS>

Table 4.1. Log of observations

	03 Feb 2006 ^a	19 Feb 2007	13 Mar 2007	15 Mar 2007
Wavelength	3 mm + 1.3 mm	3 mm	1.3 mm	1.3 mm
On-source time (hours)	5.3	4.5	5.0	4.0
Configuration	6Aq	6Aq	6Bq	6Bq
Bandpass calibrator	3C454.3	3C273	3C345	3C273
Gain calibrator	2005+403, 2013+370	2005+403, 2013+370	2005+403, 2013+370	2005+403, 2013+370
Flux calibrator	MWC349	MWC349	MWC349	MWC349

Note. — ^aAntenna 4 missing due to tuning problems.

Table 4.2. Observed molecular lines

Molecule	Transition	ν^a (MHz)	E_u^b (K)	Beam Size ^c ($'' \times ''$; $^\circ$)
HDO	$1_{1,0}-1_{1,1}$	80578.3	47	1.23×0.72 ; 26
H ₂ ¹⁸ O	$3_{1,3}-2_{2,0}$	203407.5	204	0.51×0.33 ; 22
SO ₂	$12_{0,12}-11_{1,11}$	203391.6	70	0.51×0.33 ; 22

Note. — ^aRest frequency taken from JPL molecular spectroscopy (<http://spec.jpl.nasa.gov/>). ^bEnergy of upper level. ^cSynthesized beam using natural weighting.

4.3 Results

4.3.1 Continuum emission

The natural-weighted continuum images of AFGL 2591–VLA3 at 80.6 GHz and 203.4 GHz are presented in Fig. 4.1. The angular resolutions are $1''.24 \times 0''.72$, P.A. 28° at 80.6 GHz and $0''.51 \times 0''.33$, P.A. 18° at 203.4 GHz. With an arcsecond beam, VLA3 is unresolved at 80.6 GHz. In contrast, at 203.4 GHz VLA3 is well resolved with a subarcsecond beam and shows a diamond shaped morphology in the north-south direction. In addition to VLA3, VLA1 and VLA2 are detected within the field of view at 80.6 GHz. At 203.4 GHz, VLA1 is likely resolved out due to missing short spacings. A previously unknown source (VLA3–NE) located at $\sim 2.5''$ north-eastern to VLA3 is detected at $5\text{-}\sigma$ at 203.4 GHz.

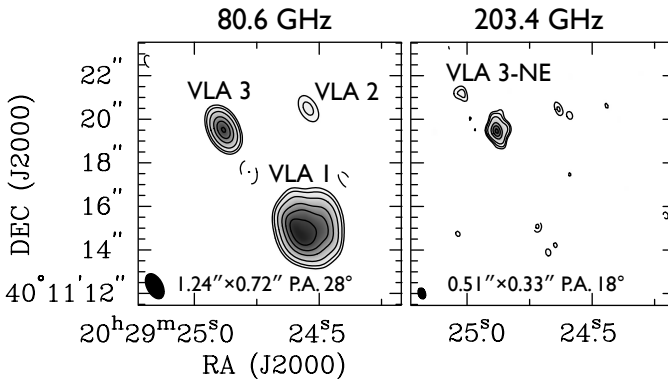


Figure 4.1 Natural-weighted continuum images in the region of AFGL 2591. (Left) 80.6-GHz continuum. Contours are at 3, 5, 10, 20, 30... σ with $1\text{-}\sigma$ of $0.15 \text{ mJy beam}^{-1}$. Sources within the field following Campbell (1984) and Trinidad et al. (2003) are marked on the map. (Right) 203.4-GHz continuum. Contours are at 3, 5, 10, 30, 50... σ with $1\text{-}\sigma$ of $0.4 \text{ mJy beam}^{-1}$.

4.3.1.1 Measurements of positions, sizes and total flux densities

The positions, sizes and total flux densities of the sources in the region of AFGL 2591 are derived in the visibility domain and summarized in Table 4.3. Judging from the images in Fig. 4.1, all sources are fit with point sources, except VLA1 at 80.6 GHz and VLA3 at 203.4 GHz, where Gaussians are used. The vector-averaged visibility plot in Fig. 4.2 shows a compact component on baselines longer than 200 $k\lambda$ for VLA3 at 203.4 GHz. We therefore fit VLA3 with a 20 mJy point source plus a 65 mJy, $1.0'' \times 0.6''$ ($\sim 800 \text{ AU}$ diameter at 1 kpc) Gaussian source. Including the flux densities of VLA2 and VLA3–NE, the total

Table 4.3. Characteristics of Continuum Emission

Source	$\Delta\alpha^a$ ($''$)	$\Delta\delta^a$ ($''$)	θ_{major}^b ($''$)	θ_{minor}^b ($''$)	P.A. ^b ($^\circ$)	F_ν^c (mJy)	$F_\nu(\text{vdT06})^d$ (mJy)
VLA1	-3.67	-4.49	2.28	2.13	-18 ± 7	62 ± 1	61 ± 1
VLA2	-3.64	1.31	1.1 ± 0.1	9 ± 1
VLA3	0.11	-0.04	7.2 ± 0.1	16 ± 2
203.4 GHz							
VLA1	61 ± 2
VLA2	-2.75	0.94	4.7 ± 0.4	65 ± 4
VLA3 ^e	0.03	0.00	0.96	0.60	6 ± 2	65 ± 2	194 ± 1
	0.16	-0.05	20 ± 1	...
VLA3-NE	1.80	1.82	4.7 ± 0.4	...

Note. — ^aPosition offset with respect to $\alpha(2000) = 20^{\text{h}}29^{\text{m}}24^{\text{s}}.87$ and $\delta(2000) = 40^\circ 11' 19''.50$. ^bFWHM source size and position angle. ^cTotal flux density. The absolute flux uncertainty is $\sim 20\%$. ^dTotal flux density measured by van der Tak et al. (2006) in the visibility domain. ^eModel with a Gaussian plus a point source. See Fig. 4.2 and text for more discussions.

flux density within the field of view at 203.4 GHz is about 93 mJy which is consistent with the visibility measurement (Fig. 4.2).

Compared to van der Tak et al. (2006), our 80.6-GHz observations measure 100%, 12% and 45% of the total flux densities of VLA1, VLA2 and VLA3, respectively, while the new 203.4-GHz observations detect 0%, 7% and 44% of the total flux densities of VLA1, VLA2 and VLA3, respectively. Considering the different array configurations (limited by the antenna shadowing effect, the shortest baselines of the observations made by van der Tak et al. (2006) are 8 k λ at 3 mm and 20 k λ at 1.3 mm) and the absolute uncertainty of the flux density, the new data are consistent with optically thin free-free emission, optically thick dust or free-free emission and optically thin dust emission for VLA1, VLA2 and VLA3, respectively, as discussed by Trinidad et al. (2003) and van der Tak et al. (1999, 2006). For the newly detected source VLA3-NE, more sensitive high-resolution observations at different frequencies are needed to derive its nature.

4.3.1.2 Estimation of densities and masses

For the “dust” source VLA3, we derive the beam averaged H₂ column density from the measured peak intensity of 30 mJy per beam at 203.4 GHz. The H₂ column density at the emission peak can be estimated as

$$N(\text{H}_2) = \frac{S_\nu a}{2m_{\text{H}}\Omega_{\text{b}}\kappa_\nu B_\nu(T_{\text{d}})}, \quad (4.1)$$

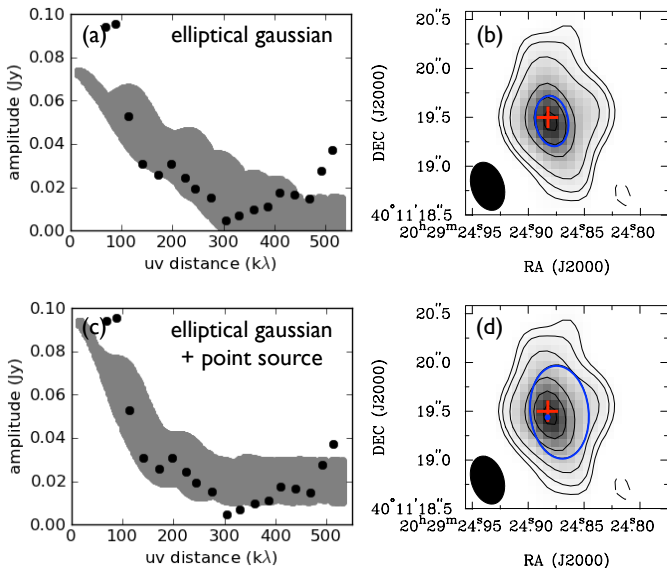


Figure 4.2 Visibility analysis of the continuum at 203.4 GHz. (a) and (c) show the observed visibilities (filled circles) and model visibilities (grey area). The observed data are vector-averaged for the purpose of better visualization. Only the averaged structure in circular symmetry can be observed in the plot. Full model visibilities are plotted in order to show the non-circular symmetric structure of the source. (b) and (d) represent a graphical view of the visibility fits of VLA3 shown in (a) and (c), respectively. The red plus sign is the peak position of the emission. Blue ellipse and filled circle stand for the Gaussian component and the point source.

where S_ν is the peak flux density, a is the gas-to-dust ratio (100), Ω_b is the beam solid angle, m_H is the mass of atomic hydrogen, κ_ν is the dust opacity per unit mass and $B_\nu(T_d)$ is the Planck function at dust temperature T_d . We apply the value of $\kappa_\nu(1.3\text{mm}) \approx 1.0 \text{ cm}^2 \text{ g}^{-1}$ as suggested by Ossenkopf & Henning (1994) for gas densities of $10^6 - 10^8 \text{ cm}^{-3}$ and coagulated dust particles with thin ice mantles. The beam averaged H_2 column densities for T_d from 100 to 300 K (see Sect. 4.3.2.4 for the validity of this assumption) are $0.5 - 1.7 \times 10^{24} \text{ cm}^{-2}$. The gas mass is estimated from the integrated continuum flux density of 85 mJy via

$$M_{\text{gas}} = \frac{F_\nu d^2 a}{\kappa_\nu B_\nu(T_d)}, \quad (4.2)$$

where F_ν is the total flux density of dust emission and d is the distance to the source. At a distance of 1 kpc and temperatures of 100–300 K, the mass is $0.1\text{--}0.3 M_\odot$, significantly less than the stellar mass of VLA3 ($\approx 10\text{--}16 M_\odot$),

Table 4.4. H₂ column density, mass and number density of VLA3

	Dust Temperature			Note
	100 K	200 K	300 K	
$N(\text{H}_2) / 10^{24} \text{ cm}^{-2}$	1.7	0.8	0.5	
$M_{\text{gas}} / M_{\odot}$	0.34	0.16	0.11	$d = 1 \text{ kpc}$
$n(\text{H}_2) / 10^7 \text{ cm}^{-3}$	22.3	10.8	7.2	if size = 800 AU
$M_{\text{gas}} / M_{\odot}$	3.03	1.48	0.98	$d = 3 \text{ kpc}$
$n(\text{H}_2) / 10^7 \text{ cm}^{-3}$	7.5	3.6	2.4	if size = 2400 AU

Lada et al. 1984; van der Tak & Menten 2005). If the distance is 3 kpc, the gas mass is modified to 1–3 M_{\odot} , still less than the scaled stellar mass of $> 20 M_{\odot}$. Regardless of the distance, the inferred mass of the surrounding gas around VLA3 is much less than the stellar mass. With the further assumption of a spherical source of 0.8'' in diameter, as measured from the visibilities of VLA3 at 203.4 GHz, H₂ number densities of $7 - 22 \times 10^7 \text{ cm}^{-3}$ are derived for a distance of 1 kpc, and of $2 - 7 \times 10^7 \text{ cm}^{-3}$ for a distance of 3 kpc. These densities are lower limits if the source structure is flattened. The inferred gas number density is consistent with the envelope density profile within radii of 400 AU (10^{7-9} cm^{-3}) as derived by van der Tak et al. (1999). We summarize these results in Table 4.4.

4.3.2 Line emission

Compact emission of HDO, H₂¹⁸O and SO₂ is found toward VLA3 (Fig. 4.3(a)–(c)). With the improved angular resolutions of our new observations (natural weighting; 3mm: $1''.23 \times 0''.72$, P.A. 26°; 1.3mm: $0''.51 \times 0''.33$, P.A. 22°), all three molecular images are resolved and show a nearly round shape, unlike the diamond shape with a centrally peaked feature seen in the 203.4-GHz continuum. At 1σ noise level, no significant line emission is found toward other sources in AFGL 2591.

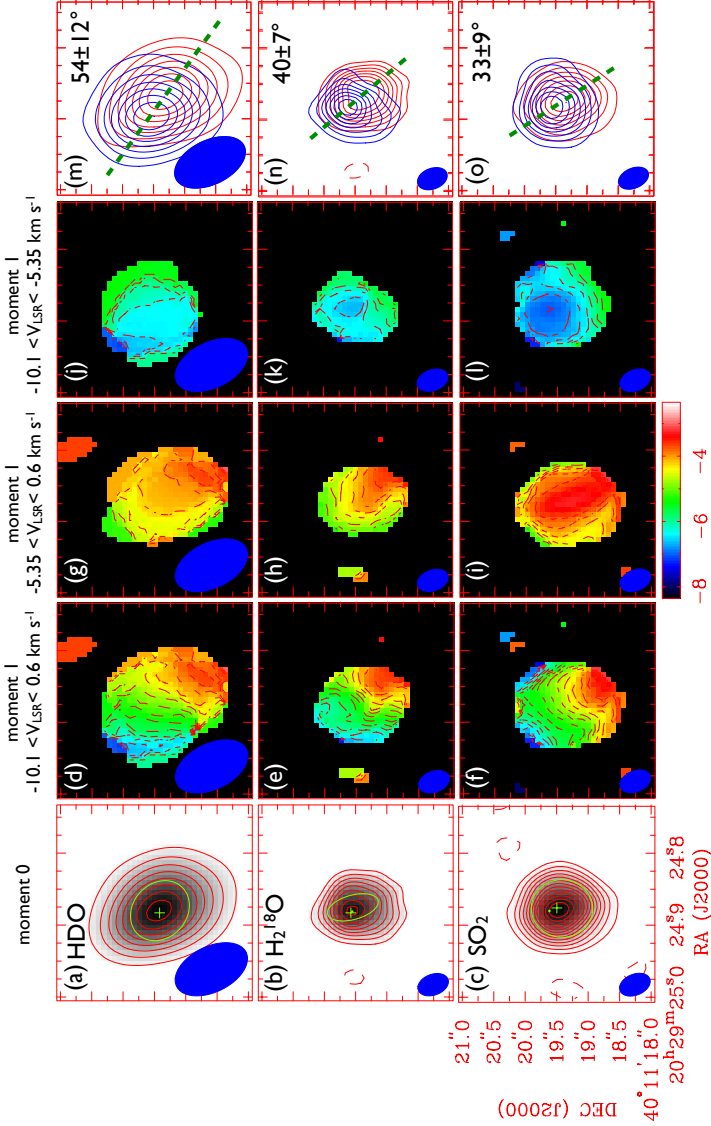


Figure 4.3 (a)–(c) Zero moment maps of HDO, H₂¹⁸O and SO₂ around VLA3, respectively. The contours are at $-3, 3, 6, 9 \dots \sigma$ for all three maps, where 1σ noise levels are 10, 37 and 65 mJy km s⁻¹ for HDO, H₂¹⁸O and SO₂, respectively. The green crosses mark the positions of emission peaks. The green ellipses represent FWHM sizes derived from visibility fit. The green filled circles indicate the positions of the additional point sources in the visibility fit of H₂¹⁸O and SO₂. The natural-weighted clean beam sizes, shown in blue filled ellipses, of HDO and H₂¹⁸O/SO₂ are $1''.23 \times 0''.772$, P.A. 26° and $0''.51 \times 0''.33$, P.A. 22° , respectively. (d)–(l) First moment maps of HDO, H₂¹⁸O and SO₂ around VLA3, respectively. For all nine maps, the color scales are set to be the same. Dashed lines represent the isovelocity contours with an interval of 0.25 km s^{-1} . (m)–(o) Molecular emission integrated over the velocity ranges of $-5.35 < V_{\text{LSR}} < 0.6 \text{ km s}^{-1}$ (red contours) and $-10.1 < V_{\text{LSR}} < -5.35 \text{ km s}^{-1}$ (blue contours) for HDO, H₂¹⁸O and SO₂, respectively. Contours are plotted with 10% interval of peak value of each velocity component. The inferred position angles of the velocity gradients across VLA3 are plotted as green dashed lines.

Table 4.5. Source positions and size parameters of VLA3 derived from molecular species

Molecule	$\Delta\alpha^a$ ($''$)	$\Delta\delta^a$ ($''$)	θ_{major}^b ($''$)	θ_{minor}^b ($''$)	P.A. ^b ($^\circ$)	V_{grad} P.A. ^c ($^\circ$)
HDO	0.13	-0.08	1.03	0.86	48 ± 15	54 ± 12
$\text{H}_2^{18}\text{O}^d$	0.07	0.05	0.84	0.39	15 ± 7	40 ± 7
	0.14	0.06
SO_2^d	0.09	-0.08	0.98	0.92	-2 ± 5	33 ± 9
	0.13	0.12

Note. — Positions and source sizes are derived in visibility domain. ^aPosition offset with respect to $\alpha(2000) = 20^{\text{h}}29^{\text{m}}24^{\text{s}}.87$ and $\delta(2000) = 40^\circ11'19''.50$. ^bFWHM source size and position angle. ^cPosition angle of the velocity gradient measured from blue- and red-shifted components. See also Fig. 4.3. ^dModel with a Gaussian plus a point source.

4.3.2.1 Measurements of positions and sizes

We derive the positions and the sizes of the line emission in the visibility domain (Fig. 4.4). In the vector-averaged visibility plots, the amplitude of the visibility decreases up to 200 k λ and is more or less flat onward. This feature is similar to what we observed in the continuum visibility at 203.4 GHz, which implies a point source surrounded by an extended source. As a result, we adopted an elliptical Gaussian plus a point source in the visibility fit of H_2^{18}O and SO_2 . For HDO, we used a Gaussian only in the fit since our baselines at 80.6 GHz only extend to 200 k λ . The source sizes derived in this approach are $0.4''$ – $1.0''$. The lower end of the result is estimated from H_2^{18}O , which could be due to the large dispersion of the visibilities or reflect a smaller source size traced by this higher excitation line ($E_{\text{u}} = 204$ K; 47 and 70 K for HDO and SO_2 , respectively). The size measurements of the molecular lines are consistent with those derived from the continuum, indicating that the dust and the molecular gas have a similar spatial distribution. The locations of the emission peaks differ by much less than the synthesized beam and are negligible. We summarize the results of the visibility analysis in Table 4.5.

4.3.2.2 Velocity gradients across VLA3

The new dataset allows us to spatially resolve the velocity distribution across VLA3. In Fig. 4.3 (d)–(f), velocity gradients in the northeast-southwest direction can be seen with the red-shifted part toward the southwest side and the

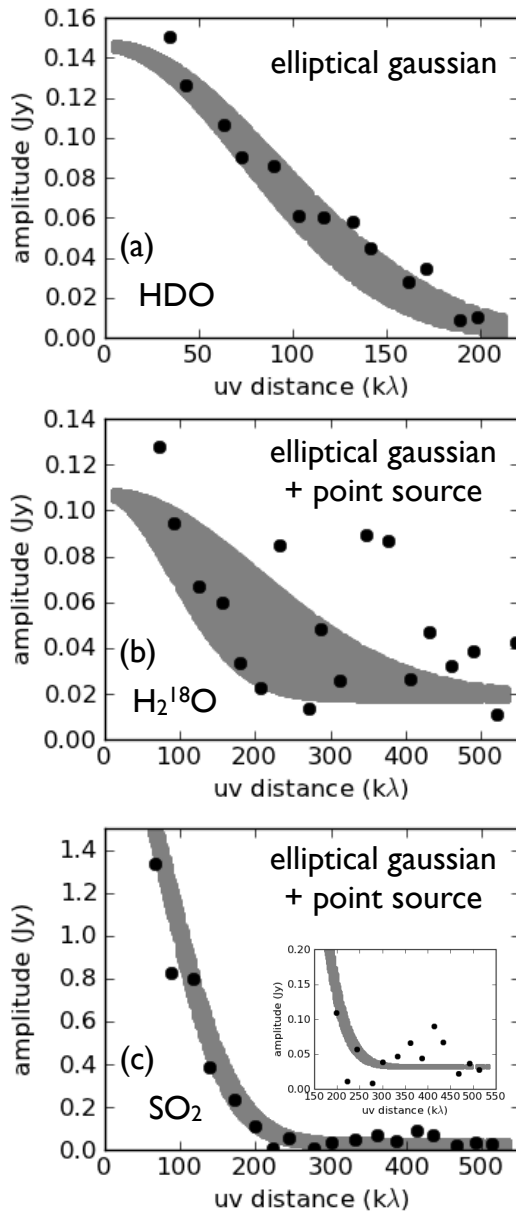


Figure 4.4 Observed visibilities of HDO, $H_2^{18}O$ and SO_2 (filled circles) overplot with model visibilities (grey area). The observed data are vector-averaged corresponding to the circularly symmetric structure. Full model visibilities are plotted in order to show the non-circular symmetric structure of the source.

blue-shifted part toward the northeast side. Apart from the difference in angular resolution, HDO and H_2^{18}O show a similar distribution in isovelocity contours. Detailed investigation of H_2^{18}O image reveals that the isovelocity contours near the systemic velocity (green part) exhibits a mirrored S shape, while SO_2 shows a normal S-shaped distribution of isovelocity contours. The difference implies that HDO/ H_2^{18}O and SO_2 trace different kinematics of VLA3, where SO_2 may be dominated by the east-west outflow. First moment maps plotted in the velocity ranges of $-5.35 < V_{\text{LSR}} < 0.6 \text{ km s}^{-1}$ (Fig. 4.3(g)–(i)) and $-10.1 < V_{\text{LSR}} < -5.35 \text{ km s}^{-1}$ (Fig. 4.3(j)–(l)) support our speculation that SO_2 emission is dominated by the outflow since the extreme velocities originate near the source center, while HDO and H_2^{18}O are less affected by the outflow and presumably dominated by the equatorial motion. We derive the position angles of the velocity gradients across the source seen in Fig. 4.3 (d)–(f) by integrating over the velocity ranges of $-5.35 < V_{\text{LSR}} < 0.6 \text{ km s}^{-1}$ and $-10.1 < V_{\text{LSR}} < -5.35 \text{ km s}^{-1}$ for each line and overplotting them in Fig. 4.3 (m)–(o), respectively. The position angles of velocity gradients are calculated from the emission peaks of the blue- and red-shifted components derived from Gaussian fit. For HDO, H_2^{18}O and SO_2 , the position angles are $54 \pm 12^\circ$, $40 \pm 7^\circ$ and $33 \pm 9^\circ$, respectively (Table 4.5).

The orientation of the observed velocity gradients (northeast-southwest) is not perpendicular to the large scale outflow (east-west) (Mitchell et al. 1992; Hasegawa & Mitchell 1995; van der Tak et al. 1999) with a difference of $\sim 45^\circ$ in position angle. We rule out the possibility of contamination from the bipolar outflow since the red-shifted emission of the molecular emission lies to the southwest, which is inconsistent with the red lobe of the outflow in the east. High-resolution K -band imaging (Preibisch et al. 2003) shows that the orientation of the large-scale outflow remains unchanged on small scales, ruling out contamination by a small-scale outflow to explain the observed velocity pattern. A more likely interpretation for the observed velocity pattern is rotation in the equatorial plane around AFGL 2591–VLA3. For purely azimuthal motion we would expect the velocity gradient to be perpendicular to the bipolar outflow direction. Section 4.4 further explores the effect of radial motion in the equatorial plane that affects the orientation of the velocity gradient.

To further quantify the observed velocity gradients, we plot the position-velocity maps with the position angles defined in Fig. 4.3 (m)–(o) (Fig. 4.5). Clearly, in all cases a *linear* velocity gradient is found, which is very different from the typical Keplerian rotation found in the protoplanetary disks around low-mass stars (e.g., Simon et al. 2000). We derive (projected) velocity gradients of 5.5 ± 0.4 , 10.2 ± 1.3 and $12.4 \pm 0.5 \text{ km s}^{-1} \text{ arcsec}^{-1}$ or km s^{-1} per 1000 AU (at 1 kpc) for HDO, H_2^{18}O and SO_2 , respectively, suggesting that SO_2 is more affected by the east-west outflow while HDO is less affected. To minimize the contamination of the outflow and highlight the motion in the equatorial plane

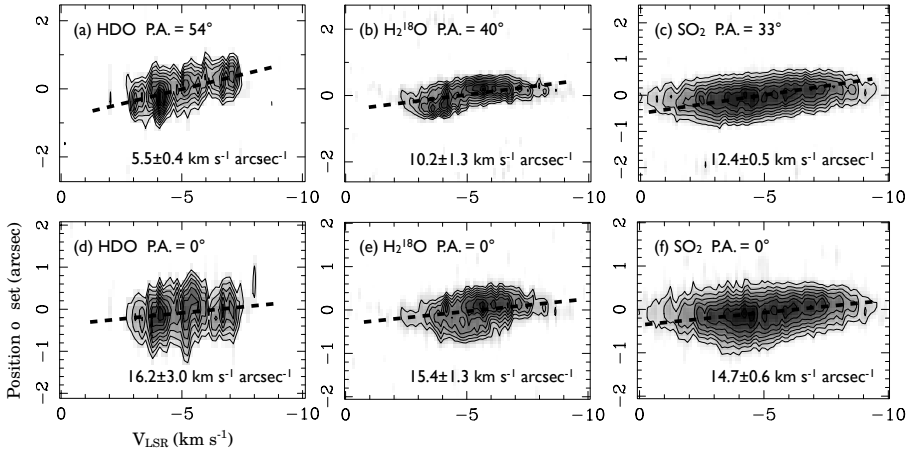


Figure 4.5 (a)–(c) Position-Velocity maps of HDO (P.A. 54° ; see Fig. 4.3 (m)–(o)), H_2^{18}O (P.A. 40°) and SO_2 (P.A. 33°). Linear velocity gradients are fitted to the maps and shown as dotted lines. (d)–(f) Same as (a)–(c) except the position angle of the position-velocity cut for all three molecules is 0° .

of VLA3, we also derive the velocity gradients by taking the position-velocity cut with P.A. = 0° . A consistent strength of linear velocity gradient ($\sim 15 \text{ km s}^{-1} \text{ arcsec}^{-1}$) is derived from all three molecules, indicating that the effect of outflow is indeed minimized.

4.3.2.3 Molecular line profile

Spectra of HDO, H_2^{18}O and SO_2 centered at the mean emission peak ($\Delta\alpha = -0.15''$, $\Delta\delta = 0.02''$) in a single synthesized beam ($1''.23 \times 0''.72$, P.A. 26°) are shown in Fig. 4.6. A triple-peaked line profile is observed for HDO, while the H_2^{18}O and SO_2 line profiles are smooth Gaussians with weak hints of secondary peaks coincident with those seen in HDO. We use three Gaussians to decompose the HDO line profile (Table 4.6) and find that Gaussians with FWHM of $\sim 1.20 \pm 0.05 \text{ km s}^{-1}$ at V_{LSR} of -6.89 ± 0.03 , -5.35 ± 0.34 and $-3.92 \pm 0.26 \text{ km s}^{-1}$ best reproduce the observed spectrum, although significant residuals remain near -8.0 and -3.0 km s^{-1} . The velocity differences between the blue-shifted and systemic components ($1.54 \pm 0.34 \text{ km s}^{-1}$), and, the red-shifted and systemic components ($1.43 \pm 0.43 \text{ km s}^{-1}$) are comparable, which suggest that the red- and blue-shifted components are likely from the same structure undergoing systematic motion, not just a spatial coincidence of three different gas clumps. To decompose the H_2^{18}O and SO_2 line profiles, we fit three Gaussians fixed at V_{LSR} of -6.89 , -5.35 and -3.92 km s^{-1} derived from HDO line profile (Table 4.6). For an FWHM line width of 1.45 km s^{-1} , this fit reproduces most of the

line profile, with only significant residuals at extreme velocities (near -2.5 and -8.5 km s $^{-1}$ for H $_2$ 18 O, and near -2.0 and -9.0 km s $^{-1}$ for SO $_2$). Based on the line profiles and the observed velocity gradient across the source, we suggest that the velocity structure of VLA3 consists of three components: two exhibiting motions (azimuthal and radial) in the equatorial plane and one static component.

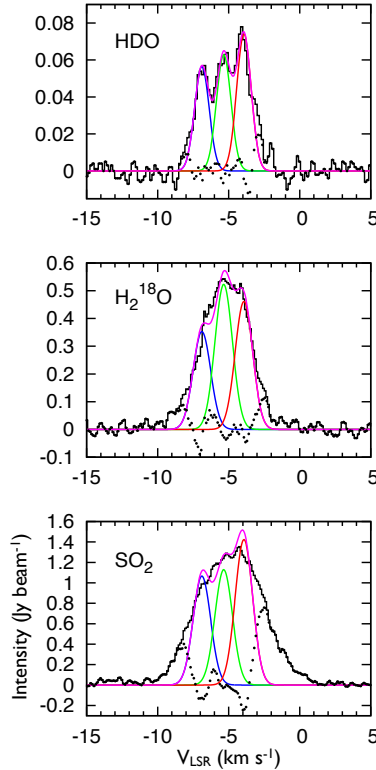


Figure 4.6 Molecular spectra taken at the mean emission peak after convolving all data to the same angular resolution of $1''.23 \times 0''.72$, P.A. 26° . Fitted Gaussians are overplotted in color. Residuals are shown in dots.

4.3.2.4 Molecular excitation

We estimate the excitation conditions of VLA3 based on the line ratios of the chemically related molecules HDO and H $_2$ 18 O. If we assume optically thin emission and local thermodynamic equilibrium (LTE), the total column density at a given excitation temperature can be derived via

$$N_{\text{tot}} = \frac{2.04W}{\theta_a \theta_b} \frac{Q_{\text{tot}} e^{E_u/T_{\text{ex}}}}{g_l g_K S \mu^2 \nu^3} \times 10^{20} \text{ cm}^{-2}, \quad (4.3)$$

Table 4.6. Line parameters of HDO, H₂¹⁸O and SO₂ derived from fitting of three Gaussian components

Molecule	Blue-shifted		Systemic		Red-shifted		
	V_{LSR}^a (km s ⁻¹)	ΔV^b (km s ⁻¹)	V_{LSR} (km s ⁻¹)	ΔV (km s ⁻¹)	V_{LSR} (km s ⁻¹)	ΔV (km s ⁻¹)	W (Jy beam ⁻¹ km s ⁻¹)
HDO	-6.89(3)	1.20 (5)	-5.35(34)	1.20(5)	-3.92(26)	1.20(5)	0.094(3)
H ₂ ¹⁸ O	-6.89	1.45	-5.35	1.45	-3.92	1.45	0.712(19)
SO ₂	-6.89	1.45	-5.35	1.45	-3.92	1.45	2.20(11)

Note. — Errors in units of the last decimal are given in the parentheses. Values without parentheses are fixed in the fitting. ^aLine center velocity. ^bFWHM line width. ^cIntegrated intensity.

where W is the integrated intensity in $\text{Jy beam}^{-1} \text{ km s}^{-1}$, θ_a and θ_b are the FWHM widths of the synthesized beam in arcsec, Q_{tot} is the partition function, E_u is the upper energy level in K, T_{ex} is the excitation temperature in K, g_I and g_K are the spin and K degeneracies, respectively, S is the line strength, μ is the dipole moment in Debye, and ν is the rest frequency in GHz. The source filling factor is assumed be unity and background emission is neglected. In other words, the excitation temperature can be expressed as a (nonlinear) function of the column density ratio of HDO and H_2^{18}O , if HDO and H_2^{18}O share the same excitation temperature. Once the excitation temperature is estimated, the column density can be derived via Equation (4.3).

The column density ratio $N_{\text{tot}}[\text{H}_2^{18}\text{O}]/N_{\text{tot}}[\text{HDO}]$ can be expressed as

$$\frac{N_{\text{tot}}[\text{H}_2^{18}\text{O}]}{N_{\text{tot}}[\text{HDO}]} = \frac{N_{\text{tot}}[\text{H}_2\text{O}]}{N_{\text{tot}}[\text{HDO}]} \times \frac{N_{\text{tot}}[\text{H}_2^{18}\text{O}]}{N_{\text{tot}}[\text{H}_2\text{O}]} \quad (4.4)$$

For the column density ratio of H_2O and HDO, we adopt the abundance ratio $[\text{H}_2\text{O}]/[\text{HDO}]$ of 1400–2000 for the inner region of the envelope around VLA3 (assuming this ratio can be applied to the observed rotating structure), which is derived based on the “jump” model of 1D radiative transfer calculations (see Table 11 of van der Tak et al. 2006). We assume the column density ratio of H_2^{18}O and H_2O to be 0.002 based on the $^{18}\text{O}/^{16}\text{O}$ ratio (Wilson & Rood 1994). Therefore, the column density ratio $N_{\text{tot}}[\text{H}_2^{18}\text{O}]/N_{\text{tot}}[\text{HDO}]$ is 2.8–4.0. The total column densities of HDO and H_2^{18}O as a function of T_{ex} are shown in the upper three panels of Fig. 4.7, while the column density ratio $N_{\text{tot}}[\text{H}_2^{18}\text{O}]/N_{\text{tot}}[\text{HDO}]$ as a function of T_{ex} can be seen in the bottom three panels of Fig. 4.7. From the column density ratio plots, a range of excitation temperatures for a given velocity component can be estimated by finding the intersections of the derived curves of the column density ratio from the new observations (in purple) and the horizontal lines of the adopted column density ratios from Equation (4.4) (in green). We summarize the molecular excitation condition of VLA3 in Table 4.7.

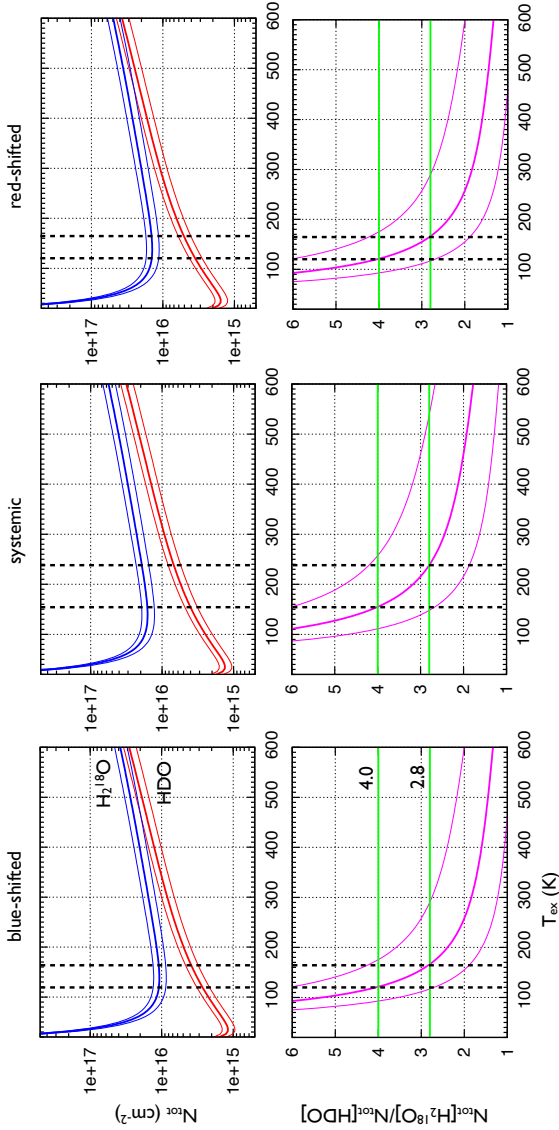


Figure 4.7 H_2^{18}O and HDO column density and column density ratio plots. The left, middle and right columns represent the plots for the blue-shifted, systemic and red-shifted components, respectively. In the first row, total column densities at different excitation temperatures are plotted in blue (H_2^{18}O) and red (HDO) thick curves. Their column density ratios, shown in thick purple curves. The thin curves represent the errors. In addition, the H_2^{18}O over HDO column density ratio, derived from van der Tak et al. (2006) and Wilson & Rood (1994), are plotted as green horizontal lines. The excitation temperatures for a given component can be read out by finding the intersection of the green lines and thick purple lines. The thick vertical dashed lines mark the derived temperatures for ratio 2.8 and 4.0. Here we derive the excitation temperature without considering the error of absolute flux density. Derived temperatures and column densities are summarized in Table 4.7.

We estimate the excitation temperatures for the blue-shifted, systemic and red-shifted components to be 120–165 K, 155–240 K and 120–165 K, respectively, or 90–290 K, 110–540 K and 90–290 K, respectively, if the error in absolute flux calibration is considered. We find that the blue- and red-shifted components have similar excitation temperatures, implying again that both components are from a single source structure such as the observed equatorial gas component around VLA3. There is also an indication that the systemic component might be warmer. The overall column densities counting all three velocity components (without absolute error in flux density) for HDO, H_2^{18}O and SO_2 are 1×10^{16} , 4×10^{16} and $1 \times 10^{16} \text{ cm}^{-2}$, respectively. The fractional abundances are estimated to be 5×10^{-8} , 2×10^{-7} and 6×10^{-8} for HDO, H_2^{18}O and SO_2 , respectively, adopting the 203.4-GHz continuum peak flux at the resolution of $1''.23 \times 0''.72$, P.A. 26° and using $T_d = 200 \text{ K}$ in the calculation of Equation (4.1).

We note that the line ratio analysis of HDO and H_2^{18}O discussed above is sensitive to the assumed abundance ratios of HDO/ H_2O and $^{16}\text{O}/^{18}\text{O}$. For example, if the assumed $N_{\text{tot}}[\text{H}_2^{18}\text{O}]/N_{\text{tot}}[\text{HDO}]$ is smaller (larger) by a factor of two, the corresponding temperatures would be less than 100 K (greater than 250 K) for all three velocity components. Alternatively, if we adopt a temperature of 100 K (the ice evaporation temperature), the derived column density ratio $N_{\text{tot}}[\text{H}_2^{18}\text{O}]/N_{\text{tot}}[\text{HDO}]$ would be less than 7, consistent with van der Tak et al. (2006). Only observations of multiple transitions of HDO and H_2^{18}O can further constrain the excitation conditions of the inner region of VLA3.

Alternatively, the excitation conditions on large scales near VLA3 can be estimated from the HDO single-dish data published by van der Tak et al. (2006) with the population diagram method (Goldsmith & Langer 1999). Including the effects of beam dilution and line opacity, the excitation temperature, total column density and source size are solved self-consistently. The observed data (red open circles) and best fit model (green crosses) are plotted in Fig. 4.8. The excitation temperature is estimated to be $130 \pm 30 \text{ K}$ with a column density of $\sim (1.0 \pm 0.1) \times 10^{14} \text{ cm}^{-2}$ distributed uniformly in a source with angular size of $17 \pm 2''$. Line opacities of all the transitions used are estimated to be less than 0.006. The excitation temperatures derived from the single-dish data are consistent with the ones derived from our new interferometric data. The total HDO column density including all three velocity components is about $3 \times 10^{13} \text{ cm}^{-2}$ if we observe the same structure (roughly $0.8'' - 1.0''$) seen by the interferometer with a $17''$ beam which is consistent with the value derived from single-dish data if missing flux is considered. As a result, both single-dish and interferometric data imply that HDO is present in both the outer envelope and the inner dense region toward VLA3 with a temperature greater than $\sim 100 \text{ K}$.

Table 4.7. Excitation temperatures and column densities

Component	T_{ex}^a (K)	$N_{\text{tot}}[\text{HDO}]^b$ ($\times 10^{15} \text{ cm}^{-2}$)	$N_{\text{tot}}[\text{H}_2^{18}\text{O}]^b$ ($\times 10^{16} \text{ cm}^{-2}$)	$N_{\text{tot}}[\text{SO}_2]^b$ ($\times 10^{15} \text{ cm}^{-2}$)	$X[\text{HDO}]^c$ ($\times 10^{-8}$)	$X[\text{H}_2^{18}\text{O}]^c$ ($\times 10^{-7}$)	$X[\text{SO}_2]^c$ ($\times 10^{-8}$)
Blue-shifted	120–165	2.7–3.9	1.1	3.0–4.8
Systemic	155–240	4.0–5.5	1.6	4.7–7.3
Red-shifted	120–165	3.5–5.1	1.4	4.0–6.5
Overall	...	10.2–14.5	4.1	11.7–18.6	4.4–6.2	1.7	4.9–7.9

Note. — ^aExcitation temperatures estimated from column density ratios. See Sect. 4.3.2.4 for details. ^bTotal column density derived under LTE and optically thin assumptions. ^cWith respect to H_2 . Assuming a dust temperature of 200 K, $N_{\text{tot}}[\text{H}_2]$ of $2.35 \times 10^{23} \text{ cm}^{-2}$ is derived from the 203.4-GHz continuum at a resolution of $1''.23 \times 0''.72$, P.A. 26° . The uncertainty in $N_{\text{tot}}[\text{H}_2]$ is not considered.

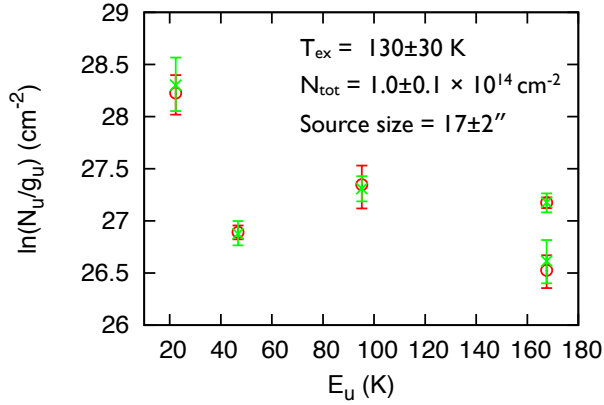


Figure 4.8 HDO rotation diagram plotted with the data published by van der Tak et al. (2006). Red open circles are the data observed with JCMT and IRAM 30m. The green crosses represent the best-fit model from population diagram analysis (Goldsmith & Langer 1999).

4.4 Kinematics of the equatorial region of VLA3

4.4.1 Evidence of rotation and outward radial motions

The new (sub)arcsecond resolution PdBI observations resolve the velocity field in the inner region of AFGL 2591–VLA3. Clear *linear* velocity gradients in the northeast-southwest direction are observed in HDO, H₂¹⁸O and SO₂ lines. Comparison of the distributions of isovelocity contours of these lines reveals that HDO and H₂¹⁸O best reflect the kinematics of the equatorial region of VLA3, while SO₂ is more affected by the east-west outflow. In addition, a triple-peaked line profile is observed in HDO. Given the bipolar outflow geometry in the east-west direction (Mitchell et al. 1992; Hasegawa & Mitchell 1995; Preibisch et al. 2003), which defines a north-south equatorial plane, we propose that the observed lines trace rotation in the inner envelope around VLA3. We suggest that radial motions alter the velocity field’s position angle from the expected north-south direction to the observed northeast-southwest direction. Consider an inclined disk-like structure at P.A. 0°, with rotation and radial motion but without vertical motion (as expected for a model in vertical hydrostatic equilibrium), four possible velocity patterns exist (as shown schematically in Fig. 4.9), depending on whether the rotation appears clockwise or counterclockwise as seen by the observer, and whether the radial motion are inward or outward. Only the combination of counterclockwise rotation and *outward* radial motions reproduce the observed velocity pattern (c.f. Fig. 4.3 and 4.9).

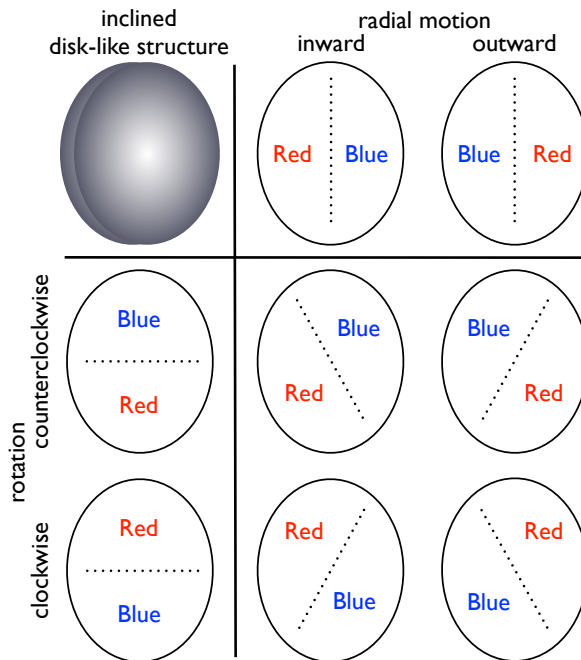


Figure 4.9 Schematic view of the velocity fields combining radial motion and rotation.

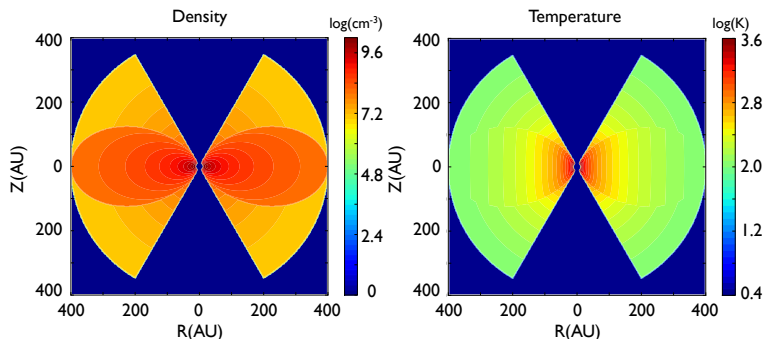


Figure 4.10 Gas density (left) and gas temperature (right) distributions of the source in the radiative transfer models, including a disk-like structure, a spherical turbulent envelope, and an outflow cavity.

4.4.2 A toy model

To explore if a kinematical model as suggested in the previous section can reproduce the observed velocity pattern and molecular line spectra, we constructed a toy model and calculate the resulting emission using the axisymmetric radiative transfer code RATRAN (Hogerheijde & van der Tak 2000). Our model includes a flattened “disk-like” structure surrounded by a static spherical envelope and a bipolar outflow cavity (Fig. 4.10). We adopt a parametrized description of the density, temperature, and velocity field, and assume LTE and optically thin conditions for the line emission. Given the critical densities of the observed transitions (7×10^4 , 3×10^5 and 5×10^6 cm^{-3} for HDO, H_2^{18}O and SO_2 at 200 K, respectively), and the densities derived in Sect. 4.3.1.2, the excitation is likely in LTE. We scale the model intensity to match the observed line strengths, which means that we can derive conclusions about the velocity field but not the density or temperature. Our only aim is to show that our simple toy model can reproduce the observed velocity pattern and spectral line shapes. We do not perform any global model optimization in density, temperature and velocity profiles. Instead, for fixed sets of density and temperature profiles, we conduct a simplified optimization to the parametrized velocity field. Our derived parameters are therefore not best-fit solutions but rather indicative values.

4.4.3 Details of the model

The density profiles for the disk-like structure (for simplicity, we use “disk” hereafter in this section) and the envelope are assumed to follow power-law distributions, respectively, as $n_{\text{disk}}(r, \theta) = An_{\text{e0}}(r/r_{\text{d}})^{-\alpha} \sin^f(\theta)$ and $n_{\text{env}}(r) = n_{\text{e0}}(r/r_{\text{d}})^{-\alpha}$, where n_{e0} is the density at radius r_{d} (the outer radius of the disk), A is the disk-to-envelope density ratio at r_{d} in the mid-plane, θ is the angle measured from the polar axis, f is the flattening parameter and α is the power-law index. In the disk density profile, regions with densities lower than An_{e0} are set to have zero density, resulting in a dumpling-like, flattened structure. The overall density in the model is the sum of n_{disk} and n_{env} . For the temperature profiles in the disk and the envelope, we assume power-law distributions, respectively, as $T_{\text{disk}}(R) = BT_{\text{e0}}(R/r_{\text{d}})^{-\beta}$ and $T_{\text{env}}(r) = T_{\text{e0}}(r/r_{\text{d}})^{-\beta}$ (i.e., we adopt a vertically isothermal model for the disk) where R denotes the radial direction in cylindrical coordinates, T_{e0} is the temperature at r_{d} , B is the disk-to-envelope temperature ratio, and β is the power-law index. The gas temperature for a given position is the weighted mean of the disk and envelope values: $T = (n_{\text{disk}}T_{\text{disk}} + n_{\text{env}}T_{\text{env}})/(n_{\text{disk}} + n_{\text{env}})$. The distance to the source is assumed to be 1 kpc. The inner radius of the model is set to 12.5 AU (half the size of the HII region; van der Tak & Menten 2005) and the outer radius to 400 AU ($= r_{\text{d}}$, based on the size derived from our 203.4 GHz continuum). In addition,

a bipolar outflow cone with an opening angle of 60° is included in the model by setting the density inside this cone to be zero. We describe the velocity field in the disk by three orthogonal components as radial (v_R), vertical (v_z) and azimuthal (v_a). The velocity field in the static envelope is set to be purely turbulent, inspired by the observed spectra showing emission peaks near systemic velocity. The gas velocity for a given position is the weighted mean of the disk and envelope values: $\vec{v} = (n_{\text{env}}\vec{v}_{\text{env}} + n_{\text{disk}}\vec{v}_{\text{disk}})/(n_{\text{disk}} + n_{\text{env}})$. The inclination of the source is set to be 30° (van der Tak et al. 2006) with the blue-shifted outflow cone pointed to the west. Model parameters are chosen to ensure that the LTE and optically thin assumptions are valid. We adopt $A = 10$, $n_{\text{e}0} = 1 \times 10^7 \text{ cm}^{-3}$, $\alpha = 1.5$, $f = 5$, $B = 1$, $T_{\text{e}0} = 100 \text{ K}$, $\beta = 1$, a molecular fractional abundance of 1×10^{-13} and a turbulent line width of 0.5 km s^{-1} . A detailed description of the parametrized velocity field is given in the next section. We scale the line intensity to the observed values, and only analyze the velocity signatures (moment 1 maps and position-velocity maps) and spectral line profiles. We note that this scaling process makes the exact profiles of density and temperature irrelevant.

4.4.4 Evidence of sub-Keplerian rotation and Hubble-law like radial expansion traced by HDO and H_2^{18}O

The analysis of the position-velocity maps of the observed lines toward VLA3 reveals that the velocity field is characterized by a linear velocity gradient (Fig. 4.5), which suggests that the equatorial region is undergoing solid-body rotation. However, the analysis demonstrated in Fig. 4.9 implies that an extra outward radial component is required to reproduce the observed northeast-southwest velocity pattern (Fig. 4.3 (d)–(f)). Therefore, a direct link between the observed linear velocity gradient and the inferred solid-body rotation may not be trivial. In our toy model, we consider two types of velocity profiles in the azimuthal and radial directions for the disk-like structure: one is proportional to $r^{-0.5}$ and the other follows r^{+1} . Although all the combinations of the velocity field can reproduce the triple-peaked line signature seen in HDO and the linear velocity gradient seen in the position-velocity maps, only Keplerian-like rotation ($v_a \sim r^{-0.5}$) plus Hubble-law like radial expansion ($v_R \sim r^{+1}$) can reproduce the mirrored S-shape isovelocity contours observed in H_2^{18}O , which is less affected by the outflow than SO_2 (Fig. 4.11; c.f., Fig. 4.3(e)). An additional velocity component in the z direction may redistribute the isovelocity contours to match the observed SO_2 moment 1 map. In our toy model, the outflow component is not included due to the complexity of outflow morphology and velocity field. Therefore, we use HDO and H_2^{18}O data to constrain the kinematics of the equatorial region of VLA3. To summarize, we adopt the parametrized velocity for the disk-like

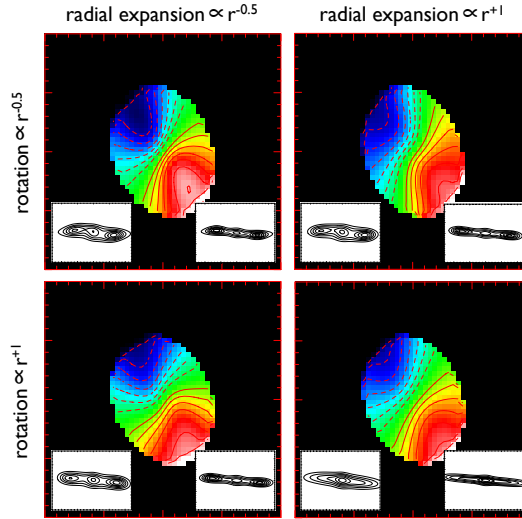


Figure 4.11 Model moment 1 maps of the combined velocity profiles in azimuthal and radial directions. The model position-velocity maps are included in each panel (bottom-left: P.A. 0° , bottom-right: P.A. 45°). In all cases, linear velocity gradient can be inferred. However, only Keplerian-like rotation ($\sim r^{-0.5}$) plus Hubble-law like radial expansion ($\sim r^{+1}$) can reproduce the observed mirrored S-shape isovelocity contours seen in H_2^{18}O (c.f., Fig. 4.3(e)).

structure as:

$$\begin{aligned} v_R &= v_{R0}r \\ v_a &= \xi \sqrt{GM_\star/r} \\ v_z &= 0, \end{aligned} \quad (4.5)$$

where v_{R0} is an analog of the Hubble constant, ξ is a constant between 0 and 1, G is the gravitational constant and $M_\star=16M_\odot$ (van der Tak & Menten 2005) is the stellar mass.

To estimate the strength of the two free parameters v_{R0} and ξ in our kinematic model, we perform a simplified parameter optimization which utilizes the peak velocities of the HDO triple-peaked line profile (-6.7 , -5.4 and -3.9 km s^{-1} for the blue-shifted, systemic and red-shifted components, respectively), and the measured linear velocity gradient of ~ 15 $\text{km s}^{-1} \text{arcsec}^{-1}$ at P.A. 0° as the constraints. We constructed a grid of models for HDO with v_{R0} between 4 and 20 km s^{-1} per 1000 AU and ξ between 0.2 and 0.5. For each set of parameters (v_{R0} , ξ), we compute $\Delta^2 = \Sigma(\text{observed peak velocities} - \text{model peak velocities})^2$, which is smaller for a better match. Figure 4.12 shows that the models with the lowest Δ^2 values span a diagonal in (v_{R0} , ξ)-space, indicating that the model is degenerate. To break the degeneracy, we compute the strength of the linear velocity gradient at P.A. 0° in our grid model and plot it as the solid curves

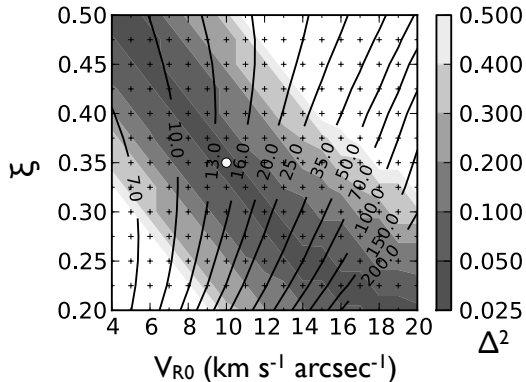


Figure 4.12 Simplified parameter optimization of our kinematic model. The grey scales represent the similarity of model and observed HDO triple-peaked line profile (lower values for better match). The solid curves with values in unit of $\text{km s}^{-1} \text{arcsec}^{-1}$ indicate the measured strength of linear velocity gradient at P.A. 0° in the grid models. The open circle highlights our best matching parameter set ($v_{R0} = 10 \text{ km s}^{-1} \text{arcsec}^{-1}$, $\xi = 0.35$).

in Fig. 4.12. By matching the observed value, we conclude that based on our toy model, the azimuthal motion of the disk-like structure traced by HDO can be characterized by sub-Keplerian rotation (about 1/3 the strength of Keplerian rotation with a stellar mass of $16 M_\odot$) and the radial motion is the accelerated expansion with the analogue Hubble constant of 10 km s^{-1} per 1000 AU at 1 kpc. The best matching model spectrum, moment 1 maps and position-velocity map for HDO can be found in Fig. 4.13 (a)–(e).

To model the H_2^{18}O data, we use the best matching solution for HDO ($v_{R0} = 10 \text{ km s}^{-1} \text{arcsec}^{-1}$, $\xi = 0.35$) as the starting point. Certainly, the turbulent line width of 0.5 km s^{-1} is too narrow for H_2^{18}O since its line profile is Gaussian-like with hints of secondary velocity components. We therefore adopt a turbulent line width of 1.0 km s^{-1} in the model. The best matching model for H_2^{18}O can be seen in Fig. 4.13 (f)–(j). Though not perfectly matching the observations, our toy model of kinematics is able to reproduce both HDO and H_2^{18}O data qualitatively. In our toy model, we found that the kinematics of the proposed disk-like structure around VLA3 is best described by two velocity components: sub-Keplerian rotation and Hubble-law like expansion. We also found that the conclusion of rigid-body rotation across the source judging directly from the linear velocity gradient observed in position-velocity maps may not be made if the observed velocity gradient does not align well with the equatorial plane defined by the outflow.

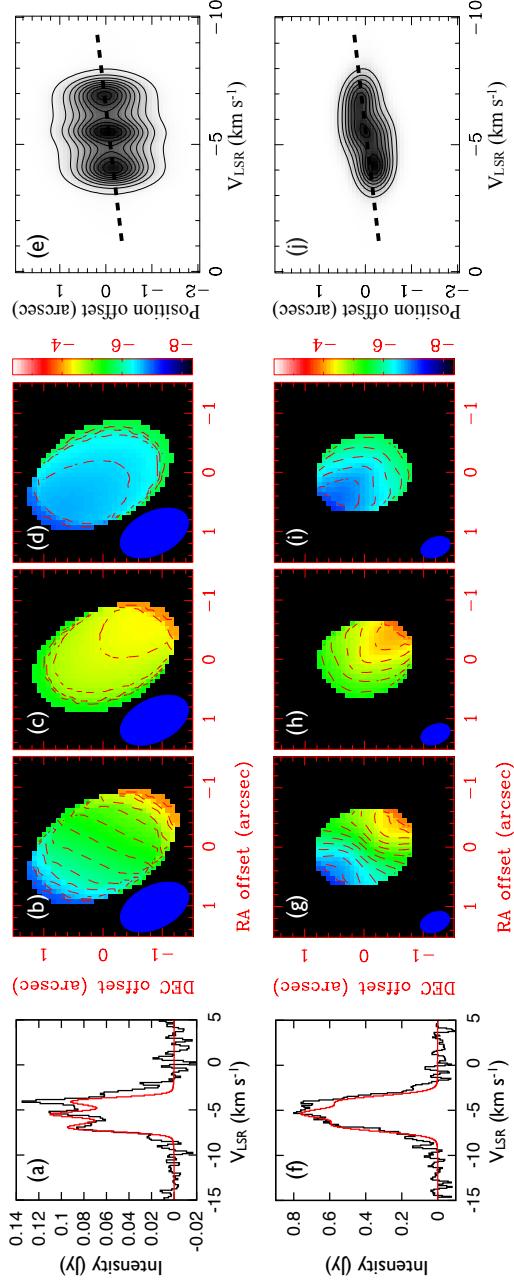


Figure 4.13 (Left) Best matching model spectrum (a), moment 1 maps (b)–(d) and position-velocity map (f) for HDO. The color scales and contour levels for moment 1 maps are identical to Fig. 4.3 (d)–(l). The dashed line in the position-velocity map represents a linear velocity gradient with strength of $15 \text{ km s}^{-1} \text{ arcsec}^{-1}$. (Right) Best matching model for H_2^{18}O .

4.5 Discussion

4.5.1 An embedded disk-like structure in AFGL 2591–VLA3?

Our (sub)arcsecond PdBI images of HDO, H_2^{18}O and SO_2 reveal a clear velocity gradient in the northeast-southwest direction across the source AFGL 2591–VLA3 (Sect. 4.3.2.2). Together with the shape of the HDO line profile (Sect. 4.3.2.3), and the symmetric temperature distribution of the blue- and red-velocity components (Sect. 4.3.2.4), we propose that the source AFGL 2591–VLA3 is surrounded by a disk-like structure undergoing rotation and expansion. The kinematics of the equatorial region is further characterized as sub-Keplerian rotation plus Hubble-law like expansion as shown by radiative transfer modeling of a toy model (Sect. 4.4). In the models for HDO, a microturbulent line width of $\sim 0.5 \text{ km s}^{-1}$ matches the triple-peaked line profile, which appears small for the violent environment of massive star-forming regions (Zinnecker & Yorke 2007). On the other hand, a microturbulent line width of 1.0 km s^{-1} is needed to match the almost single-peaked line profiles seen in H_2^{18}O . We expect that an even larger turbulent line width is required to model SO_2 , judging from the observed SO_2 spectrum. This suggests that these molecules trace different regions within the disk-like structure.

We hypothesize that the disk-like structure has a layered distribution with HDO close to the mid-plane, H_2^{18}O in the warm mid-layer and SO_2 in the upper disk layers (Fig. 4.14). In addition, significant emission from all three molecules originates in a static turbulent envelope surrounding the disk-like structure, especially for H_2^{18}O and SO_2 where it dominates the line profiles (Table 4.7). In the disk-like structure, we find temperatures of about 120–165 K, well above the evaporation temperature of water ice (Fraser et al. 2001). The HDO molecules may be formed on grain surfaces (Tielens 1983; Parise et al. 2005), and released into the gas phase when the disk-like structure is heated by shocks, stellar radiation and winds. Compared to HDO, H_2^{18}O originates from a more turbulent region at larger height with increased turbulence in the disk-like structure. In this picture, the presence of H_2^{18}O but absence of HDO in the mid-layer of the disk-like structure could be due to increased local water formation because of warm gas chemistry as opposed to evaporation of deuterated ices formed at low temperature. SO_2 is a good shock/outflow tracer in massive star-forming regions (Schilke et al. 1997). Judging from the facts that the observed SO_2 line profile has significant emission from line wings, and that a relatively large velocity gradient is measured in SO_2 compared to $\text{HDO}/\text{H}_2^{18}\text{O}$, we suggest that SO_2 traces a part of the disk-like structure where the outflow interacts with the upper layers. The concentric velocity patterns seen both in the blue- and red-shifted part of moment 1 maps of SO_2 (Fig. 4.3(i) and (l)) likely support the idea since the most extreme velocities occur in the region close to the star (unlike HDO and

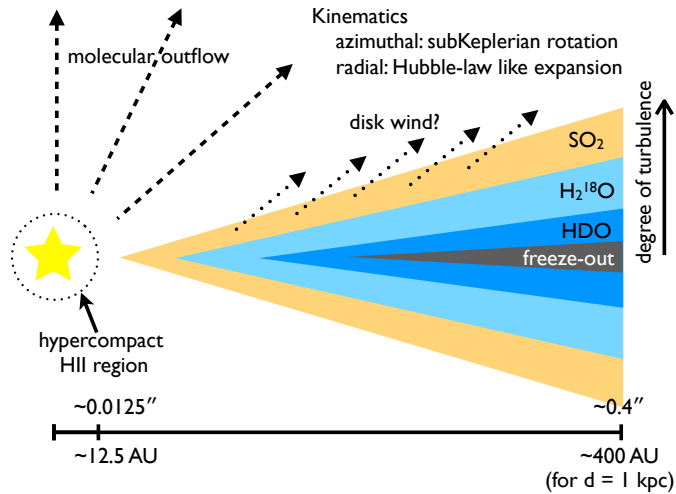


Figure 4.14 A cartoon showing the idea of a layered disk-like structure around AFGL 2591–VLA3. HDO is close to the cooler, quiescent mid-plane. H_2^{18}O is distributed in the warm mid-layer and SO_2 originates in the upper disk layers.

H_2^{18}O) as expected for an outflow origin.

4.5.2 Kinematics of the proposed disk-like structure and comparison to other disk sources

Our toy model suggests that the proposed disk-like structure around VLA3 undergoes sub-Keplerian rotation which cannot be directly inferred from the observed position-velocity maps. We speculate that a magnetic field slows the rotation down below pure Keplerian, which may help to transport the angular momentum outward in VLA3. Similar to the formation of low-mass stars, the magnetic field has been suggested to play an important role in the formation of high-mass stars as well (Girart et al. 2009; Beuther et al. 2010). In strongly magnetized clouds during collapse, magnetic braking is thought to regulate the formation of disks around stars (e.g., Basu & Mouschovias 1994; Allen et al. 2003; Mellon & Li 2008). Certainly in our case, the magnetic field does not fully dominate the kinematics of VLA3, otherwise a solid-body like velocity field would be expected in the inner region of the disk-like structure (c.f. Galli et al. 2006, Fig. 2). From OH maser observations, Hutawarakorn & Cohen (2005) measure a maser disk with radius about 750 AU and the magnetic field strength of a few mG toward AFGL 2591–VLA3, which may be sufficient to slow down the rotation. Subarcsecond dust polarization measurements of the magnetic field toward VLA3 and hence deriving the mass-to-flux ratio would be helpful to test our hy-

pothesis if the magnetic field indeed regulates the kinematics of the equatorial regions of young high-mass stars.

In addition to sub-Keplerian rotation, we found that Hubble-law like expansion occurs in the equatorial region of VLA3. The overall kinematics is similar to the SiO maser disk around Orion–IRc2 in which Keplerian rotation and decelerated expansion characterize the kinematics (Plambeck et al. 1990). The expanding motions in the disk could be due to the interaction between the stellar radiation and winds with the disk-like structure, providing the forces to push the gas outward (e.g., Hollenbach et al. 1994; Yorke & Welz 1996; Richling & Yorke 1997). On the other hand, the presence of an expanding velocity component in the disk-like structure could be the result of accretion through the mid-plane of the very inner region so that the expansion helps to conserve the angular momentum in the equatorial region. The infrared speckle imaging of AFGL 2591 by Preibisch et al. (2003) suggests that the outflow or wind is variable in time thus the accretion in the disk may not be continuous but episodic. In addition, little free-free emission is detected toward the source, indicating an evolutionary stage before the development of an ultracompact HII region (van der Tak & Menten 2005). As a result, the main accretion phase might have ceased although models show that massive young stars can continue to gain mass through the disk even after an ultracompact HII region has been developed (e.g., Keto 2007). Future high-resolution observations of multiple HDO lines and other dense gas tracers, such as N_2D^+ and CH_3CN , would be useful to constrain the physical condition and the kinematics of the disk-like structure around VLA3 better and understand its evolutionary stage of high-mass star formation.

Although massive disks showing pure Keplerian rotation traced by various molecules are reported such as the cases in IRAS 20126+4104 (C^{34}S ; Cesaroni et al. 2005), AFGL 490 (C^{17}O ; Schreyer et al. 2006) and NGC 7538S (H^{13}CN ; Sandell et al. 2003), cases showing non-Keplerian rotation were observed as well such as AFGL 2591 (HDO, H_2^{18}O ; this work) and IRAS 18089–1732 (NH_3 ; Beuther & Walsh 2008). In addition, massive disk candidates have a wide range of mass and size distributions derived via various tracers as summarized by Cesaroni et al. (2007). Despite the fact that the detections of massive disks to date are still limited, Keplerian rotation in the disks is typically found toward young massive stars with masses about $10 M_\odot$ such as the cases quoted above. For stellar masses about $16 M_\odot$, massive disks start to show non-Keplerian motion such as rigid-body rotation reported in the literature. For even higher stellar masses, the rotating structures (toroids) typically show solid-body rotation and are gravitationally unstable (Beltrán et al. 2005; Furuya et al. 2008). The sub-Keplerian rotation discovered in our work suggests that AFGL 2591–VLA3 may be a special case linking transition of velocity field of massive disks from pure Keplerian rotation to solid-body rotation though definitely more new detections of circumstellar disks around high-mass YSOs are required to examine this hypothesis.

4.5.3 Effect of the uncertainty in distance

The distance to AFGL 2591 is uncertain as discussed by van der Tak et al. (1999) and Rygl et al. (2011). In this paper, we assume a distance of 1 kpc with total luminosity of $20000 L_{\odot}$. From the radiative transfer modeling of HDO/H₂¹⁸O with our toy model, we found that the azimuthal motion of the proposed disk-like structure is dominated by sub-Keplerian rotation which is about 1/3 in strength of pure Keplerian rotation with a stellar mass of $16 M_{\odot}$, and the radial motion is consistent with Hubble-law like expansion with the analogue Hubble constant of $10 \text{ km s}^{-1} \text{ arcsec}^{-1}$. For other distances, our results remain unchanged except for the relative strengths of rotation and expansion. In particular, v_{R0} scales as $1/d$ and ξ scales as $1/\sqrt{d}$, so that for $d = 0.5$ and 3.0 kpc, v_{R0} is changed to 20 and $3.3 \text{ km s}^{-1} \text{ arcsec}^{-1}$, while ξ becomes 0.5 (effective Keplerian mass = $4 M_{\odot}$) and 0.2 (effective Keplerian mass = $0.7 M_{\odot}$). We suggest that the disk-like structure cannot undergo pure Keplerian rotation at any of these distances since the effective Keplerian masses are not consistent with the scaled total luminosities.

4.6 Conclusions

Our (sub)arcsecond resolution PdBI observations in millimeter continuum and in lines of HDO $1_{1,0}-1_{1,1}$, H₂¹⁸O $3_{1,3}-2_{2,0}$ and SO₂ $12_{0,12}-11_{1,11}$ successfully resolve the inner thousand AU region of the young high-mass star AFGL 2591–VLA3. We summarize our findings below.

1. From the visibility analysis of millimeter continuum and molecular lines, a compact source with diameter of ~ 800 AU at 1 kpc is found toward VLA3. Depending on the assumptions, the H₂ column density, number density and mass are estimated to be $1 \times 10^{24} \text{ cm}^{-2}$, $1 \times 10^8 \text{ cm}^{-3}$ and $0.2 M_{\odot}$, respectively.
2. A linear velocity gradient in the northeast-southwest direction is found across the source, which has an offset in P.A. by $\sim 40^{\circ}$ to the equatorial region (P.A. 0°) defined by the east-west outflow. We interpret this kinematical signature as a combination of rotation and radial expansion in the equatorial region of VLA3.
3. By introducing a toy model with simplified parameter optimization, we further constrain the rotation to be sub-Keplerian and the radial expansion to be Hubble-law like. This result is independent to the distance of the source.
4. We speculate that sub-Keplerian rotation in the equatorial region could be effect of magnetic field which turns the velocity profile from pure Kep-

lerian to sub-Keplerian. The expansion could be due to the interaction between the stellar radiation/winds and the gas in the equatorial region of VLA3.

5. Based on the molecular line profiles, the chemical structure of the proposed disk appears layered, with HDO near the mid-plane, H_2^{18}O in the mid-layer and SO_2 in the upper layers, judging from their turbulent line widths.

Acknowledgements

The authors appreciate the anonymous referee for the critical comments which help the preparation of the manuscript. The authors are also grateful to the staff of the Plateau de Bure telescope for assisting with the observations, especially Jan Martin Winters at IRAM Grenoble. The research of K.-S.W. at Leiden Observatory is supported through a Nederlandse Onderzoekschool Voor Astronomie (NOVA) Ph.D. grant.

Bibliography

- Allen, A., Li, Z., & Shu, F. H. 2003, *ApJ*, 599, 363
- Armitage, P. J. 2011, *ARA&A*, 49, 195
- Basu, S. & Mouschovias, T. C. 1994, *ApJ*, 432, 720
- Beltrán, M. T., Cesaroni, R., Neri, R., et al. 2005, *A&A*, 435, 901
- Beuther, H., Schilke, P., Sridharan, T. K., et al. 2002, *A&A*, 383, 892
- Beuther, H., Vlemmings, W. H. T., Rao, R., & van der Tak, F. F. S. 2010, *ApJ*, 724, L113
- Beuther, H. & Walsh, A. J. 2008, *ApJ*, 673, L55
- Beuther, H., Zhang, Q., Sridharan, T. K., & Chen, Y. 2005, *ApJ*, 628, 800
- Bruderer, S., Benz, A. O., Bourke, T. L., & Doty, S. D. 2009, *A&A*, 503, L13
- Campbell, B. 1984, *ApJ*, 287, 334
- Cesaroni, R., Felli, M., Jenness, T., et al. 1999, *A&A*, 345, 949
- Cesaroni, R., Felli, M., Testi, L., Walmsley, C. M., & Olmi, L. 1997, *A&A*, 325, 725
- Cesaroni, R., Galli, D., Lodato, G., Walmsley, C. M., & Zhang, Q. 2007, *Protostars and Planets V*, 197
- Cesaroni, R., Galli, D., Lodato, G., Walmsley, M., & Zhang, Q. 2006, *Nature*, 444, 703
- Cesaroni, R., Neri, R., Olmi, L., et al. 2005, *A&A*, 434, 1039
- Fraser, H. J., Collings, M. P., McCoustra, M. R. S., & Williams, D. A. 2001, *MNRAS*, 327, 1165
- Furuya, R. S., Cesaroni, R., Takahashi, S., et al. 2008, *ApJ*, 673, 363
- Galli, D., Lizano, S., Shu, F. H., & Allen, A. 2006, *ApJ*, 647, 374
- Girart, J. M., Beltrán, M. T., Zhang, Q., Rao, R., & Estalella, R. 2009, *Science*, 324, 1408
- Goldsmith, P. F. & Langer, W. D. 1999, *ApJ*, 517, 209
- Hasegawa, T. I. & Mitchell, G. F. 1995, *ApJ*, 451, 225
- Henning, T., Schreyer, K., Launhardt, R., & Burkert, A. 2000, *A&A*, 353, 211
- Hogerheijde, M. R. & van der Tak, F. F. S. 2000, *A&A*, 362, 697
- Hollenbach, D., Johnstone, D., Lizano, S., & Shu, F. 1994, *ApJ*, 428, 654

- Hutawarakorn, B. & Cohen, R. J. 2005, *MNRAS*, 357, 338
- Keto, E. 2007, *ApJ*, 666, 976
- Keto, E. & Zhang, Q. 2010, *MNRAS*, 406, 102
- Krumholz, M. R., Klein, R. I., McKee, C. F., Offner, S. S. R., & Cunningham, A. J. 2009, *Science*, 323, 754
- Lada, C. J., Thronson, Jr., H. A., Smith, H. A., Schwartz, P. R., & Glaccum, W. 1984, *ApJ*, 286, 302
- Mellon, R. R. & Li, Z. 2008, *ApJ*, 681, 1356
- Mitchell, G. F., Hasegawa, T. I., & Schella, J. 1992, *ApJ*, 386, 604
- Ossenkopf, V. & Henning, T. 1994, *A&A*, 291, 943
- Parise, B., Ceccarelli, C., & Maret, S. 2005, *A&A*, 441, 171
- Plambeck, R. L., Wright, M. C. H., & Carlstrom, J. E. 1990, *ApJ*, 348, L65
- Preibisch, T., Balega, Y. Y., Schertl, D., & Weigelt, G. 2003, *A&A*, 412, 735
- Richling, S. & Yorke, H. W. 1997, *A&A*, 327, 317
- Rygl, K. L. J., Brunthaler, A., Sanna, A., et al. 2011, *ArXiv e-prints*
- Sandell, G., Wright, M., & Forster, J. R. 2003, *ApJ*, 590, L45
- Schilke, P., Groesbeck, T. D., Blake, G. A., & Phillips, T. G. 1997, *ApJS*, 108, 301
- Schreyer, K., Semenov, D., Henning, T., & Forbrich, J. 2006, *ApJ*, 637, L129
- Shepherd, D. S. & Kurtz, S. E. 1999, *ApJ*, 523, 690
- Simon, M., Dutrey, A., & Guilloteau, S. 2000, *ApJ*, 545, 1034
- Tielens, A. G. G. M. 1983, *A&A*, 119, 177
- Trinidad, M. A., Curiel, S., Cantó, J., et al. 2003, *ApJ*, 589, 386
- van der Tak, F. F. S. & Menten, K. M. 2005, *A&A*, 437, 947
- van der Tak, F. F. S., van Dishoeck, E. F., Evans, II, N. J., Bakker, E. J., & Blake, G. A. 1999, *ApJ*, 522, 991
- van der Tak, F. F. S., Walmsley, C. M., Herpin, F., & Ceccarelli, C. 2006, *A&A*, 447, 1011
- Williams, J. P. & Cieza, L. A. 2011, *ARA&A*, 49, 67
- Wilson, T. L. & Rood, R. 1994, *ARA&A*, 32, 191
- Yorke, H. W. & Welz, A. 1996, *A&A*, 315, 555
- Zhang, Q., Hunter, T. R., Brand, J., et al. 2005, *ApJ*, 625, 864
- Zinnecker, H. & Yorke, H. W. 2007, *ARA&A*, 45, 481