



Universiteit
Leiden
The Netherlands

Nutritional contribution of plant foods to human diet in evolution

Schnorr, S.L.

Citation

Schnorr, S. L. (2016, March 22). *Nutritional contribution of plant foods to human diet in evolution*. Retrieved from <https://hdl.handle.net/1887/38835>

Version: Not Applicable (or Unknown)

License: [Licence agreement concerning inclusion of doctoral thesis in the Institutional Repository of the University of Leiden](#)

Downloaded from: <https://hdl.handle.net/1887/38835>

Note: To cite this publication please use the final published version (if applicable).

Cover Page



Universiteit Leiden

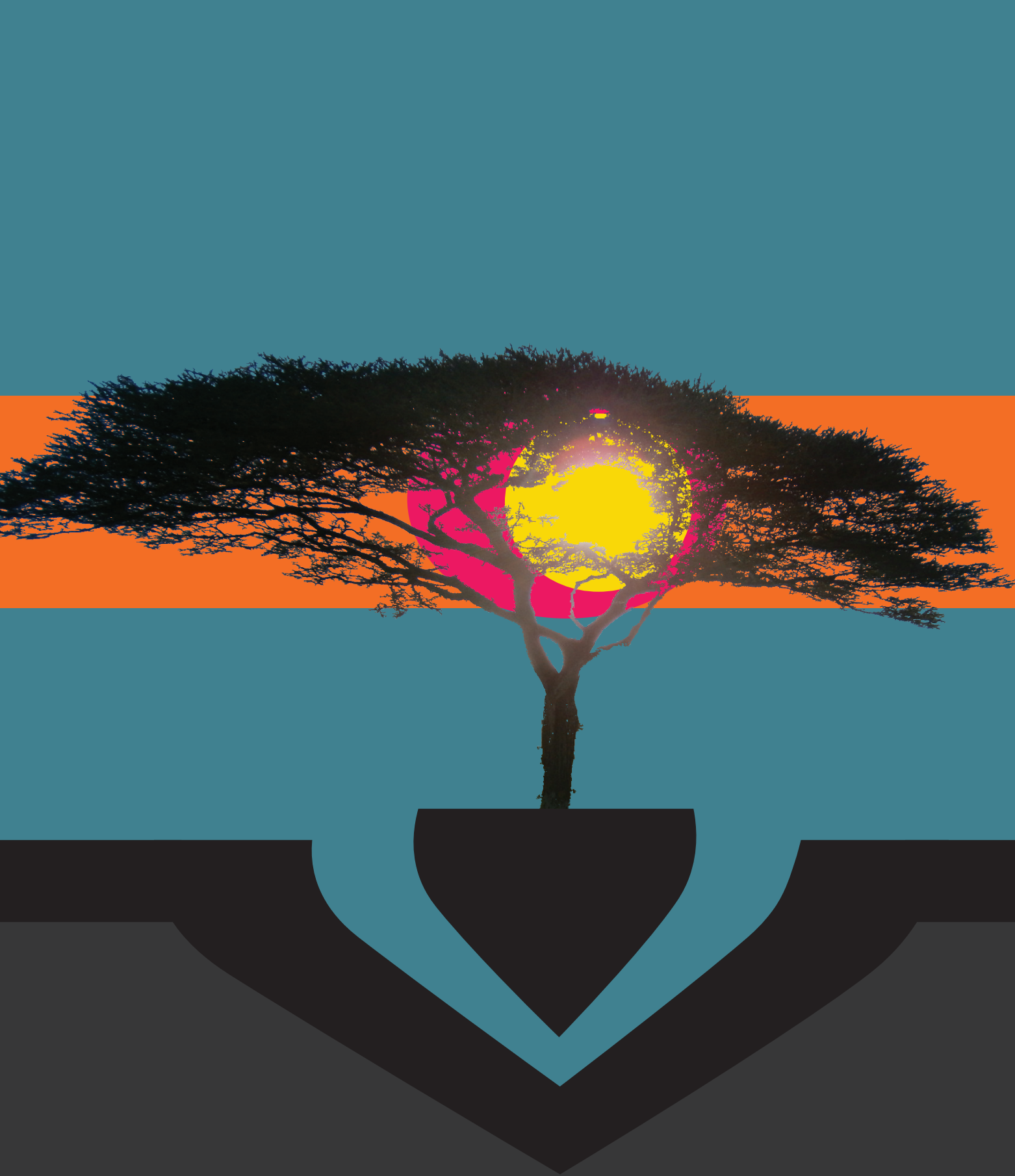


The handle <http://hdl.handle.net/1887/38835> holds various files of this Leiden University dissertation

Author: Schnorr, Stephanie

Title: Nutritional contribution of plant foods to human diet in evolution

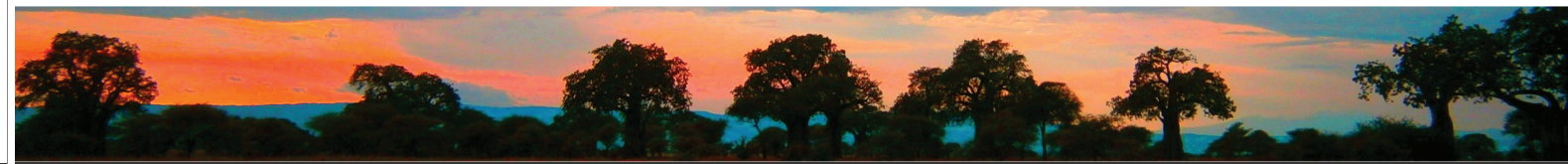
Issue Date: 2016-03-22



Nutritional Contribution of Plant Foods to Human Diet in Evolution

Stephanie L. Schnorr

Nutritional Contribution of Plant Foods to Human Diet in Evolution



Stephanie L. Schnorr