

APEX-CHAMP⁺ high-*J* CO observations of low-mass young stellar objects

IV. Mechanical and radiative feedback^{*,**}

U. A. Yıldız^{1,2}, L. E. Kristensen³, E. F. van Dishoeck^{1,4}, M. R. Hogerheijde¹, A. Karska⁴, A. Belloche⁵, A. Endo⁶,
W. Frieswijk^{7,8}, R. Güsten⁵, T. A. van Kempen¹, S. Leurini⁵, Z. Nagy⁹, J. P. Pérez-Beaupuits⁵, C. Risacher^{5,7},
N. van der Marel¹, R. J. van Weeren³, and F. Wyrowski⁵

¹ Leiden Observatory, Leiden University, PO Box 9513, 2300 RA Leiden, The Netherlands

² Jet Propulsion Laboratory, California Institute of Technology, 4800 Oak Grove Drive, Pasadena, CA 91109, USA
e-mail: Umut.Yildiz@jpl.nasa.gov

³ Harvard-Smithsonian Center for Astrophysics, 60 Garden Street, Cambridge, MA 02138, USA

⁴ Max-Planck-Institut für Extraterrestrische Physik (MPE), Giessenbachstrasse 1, 85748 Garching, Germany

⁵ Max-Planck-Institut für Radioastronomie, Auf dem Hügel 69, 53121 Bonn, Germany

⁶ Kavli Institute of Nanoscience, Delft University of Technology, Lorentzweg 1, 2628 CJ Delft, The Netherlands

⁷ Kapteyn Institute, University of Groningen, Landleven 12, 9747 AD Groningen, The Netherlands

⁸ ASTRON, Oude Hoogeveensedijk 4, 7991 PD Dwingeloo, The Netherlands

⁹ I. Physikalisches Institut der Universität zu Köln, Zùlpicher Strasse 77, 50937 Köln, Germany

Received 4 July 2014 / Accepted 7 January 2015

ABSTRACT

Context. During the embedded stage of star formation, bipolar molecular outflows and UV radiation from the protostar are important feedback processes. Both processes reflect the accretion onto the forming star and affect subsequent collapse or fragmentation of the cloud.

Aims. Our aim is to quantify the feedback, mechanical and radiative, for a large sample of low-mass sources in a consistent manner. The outflow activity is compared to radiative feedback in the form of UV heating by the accreting protostar to search for correlations and evolutionary trends.

Methods. Large-scale maps of 26 young stellar objects, which are part of the *Herschel* WISH key program are obtained using the CHAMP⁺ instrument on the Atacama Pathfinder EXperiment (¹²CO and ¹³CO 6–5; $E_{\text{up}} \sim 100$ K), and the HARP-B instrument on the *James Clerk Maxwell* Telescope (¹²CO and ¹³CO 3–2; $E_{\text{up}} \sim 30$ K). The maps have high spatial resolution, particularly the CO 6–5 maps taken with a 9'' beam, resolving the morphology of the outflows. The maps are used to determine outflow parameters and the results are compared with higher-*J* CO lines obtained with *Herschel*. Envelope models are used to quantify the amount of UV-heated gas and its temperature from ¹³CO 6–5 observations.

Results. All sources in our sample show outflow activity, with the spatial extent decreasing from the Class 0 to the Class I stage. Consistent with previous studies, the outflow force, F_{CO} , is larger for Class 0 sources than for Class I sources, even if their luminosities are comparable. The outflowing gas typically extends to much greater distances than the power-law envelope and therefore influences the surrounding cloud material directly. Comparison of the CO 6–5 results with HIFI H₂O and PACS high-*J* CO lines, both tracing currently shocked gas, shows that the two components are linked, even though the transitions do not probe the same gas. The link does not extend down to CO 3–2. The conclusion is that CO 6–5 depends on the shock characteristics (density and velocity), whereas CO 3–2 is more sensitive to conditions in the surrounding environment (density). The radiative feedback is responsible for increasing the gas temperature by a factor of two, up to 30–50 K, on scales of a few thousand AU, particularly along the direction of the outflow. The mass of the UV heated gas exceeds the mass contained in the entrained outflow in the inner ~3000 AU and is therefore at least as important on small scales.

Key words. astrochemistry – stars: formation – stars: protostars – ISM: molecules – techniques: spectroscopic

1. Introduction

During the early phases of star-formation, material surrounding the newly forming star accretes onto the protostar. At the same time, winds or jets are launched at supersonic speeds from the

star-disk system, which sweep up surrounding envelope material in large bipolar outflows. The material is accelerated and pushed to distances of several tens of thousands of AU, and these outflows play a pivotal role in the physics and chemistry of the star-forming cores (Snell et al. 1980; Goldsmith et al. 1984; Lada 1987; Greene et al. 1994; Bachiller & Tafalla 1999; Arce & Sargent 2006; Tafalla et al. 2013). The youngest protostars have highly collimated outflows driven by jets, whereas at later stages wide-angle winds drive less collimated outflows. However, there is still not a general consensus to explain the

* Appendix A is available in electronic form at <http://www.aanda.org>

** The CHAMP⁺ maps (data cubes) are only available at the CDS via anonymous ftp to cdsarc.u-strasbg.fr (130.79.128.5) or via <http://cdsarc.u-strasbg.fr/viz-bin/qcat?J/A+A/576/A109>

launching mechanisms and nature of these outflows (Arce et al. 2007; Frank et al. 2014).

The goal of this paper is to investigate how the outflow activity varies with evolution and how this compares with other measures of the accretion processes for low-mass sources. The outflows reflect the integrated activity over the entire lifetime of the protostar, which could be the result of multiple accretion and ejection events. It is important to distinguish this probe from the current accretion rate, as reflected for example in the luminosity of the source, in order to understand the accretion history. The well-known luminosity problem in low-mass star-formation indicates that protostars are underluminous compared to theoretical models (Kenyon et al. 1990; Evans et al. 2009; Enoch et al. 2009; Dunham et al. 2010, 2013). One of the possible resolutions to this problem is that of episodic accretion, in which the star builds up through short bursts of rapid accretion over long periods of time rather than continuous steady-state accretion. An accurate and consistent quantification of outflow properties, such as the outflow force and mass, is essential for addressing this problem.

Outflows have been observed in CO emission in the last few decades towards many sources, but those observations were mainly done via lower- J CO rotational transitions ($J_u \leq 3$), which probe colder swept-up or entrained gas ($T \sim 50\text{--}100$ K) (e.g., Bachiller et al. 1990; Blake et al. 1995; Bontemps et al. 1996; Tafalla et al. 2000; Curtis et al. 2010, and many others). One of the most important parameters that is used for the evolutionary studies of star formation is the “outflow force”, which is known as the strength of an outflow and defined similar to any r^{-2} -type force. These studies conclude that the outflow force correlates well with bolometric luminosity, L_{bol} , a correlation which holds over several orders of magnitude. Furthermore, the outflow force from Class 0 sources is stronger than for Class I sources, indicating an evolutionary trend. The correlations, however, often show some degree of scatter, typically more than an order of magnitude in F_{CO} for any value of L_{bol} . Some of the uncertainties in these studies include the opacity in the line wings, the adopted inclination angle and cloud contamination at low outflow velocities (e.g., van der Marel et al. 2013). Comparison with other outflow tracers such as water recently observed with the *Herschel* Space Observatory is further complicated because the various studies use different analysis methods to derive outflow parameters from low- J CO maps. One of the goals of this paper is to provide a consistent set of outflow parameters determined by the same method using data from the same telescopes for comparison with the *Herschel* lines.

Recently, the importance of radiative feedback from low-mass protostars on all scales of star formation has been acknowledged. On cloud scales ($>10^4$ AU) the feedback sets the efficiency at which cores fragment from the cloud and form stars (Offner et al. 2009, 2010; Hansen et al. 2012) because the Jeans length scales as $T^{0.5}$. Simulations including radiative feedback and radiative transfer reproduce the observed initial mass function (IMF) better than models without these effects included (Offner et al. 2009). On the scales of individual cores (<3000 AU), the radiative feedback suppresses the fragmentation into multiple systems and serves to stabilize the protostellar disk (Offner et al. 2010). Thus, quantifying observationally the temperature changes as a function of position from the protostar are important steps toward more accurate models of star formation. The first observational evidence of heating of the gas around low-mass protostars on scales of ~ 1000 AU by UV radiation escaping through the outflow cavities dates back to Spaans et al. (1995) based on strong narrow ^{13}CO 6–5 lines, and has

since been demonstrated and quantified for a few more sources by van Kempen et al. (2009b), Yıldız et al. (2012), Visser et al. (2012). We note that this UV-heated gas is warm gas with temperatures higher than that of the dust, and is thus in excess of warm material in the envelope that has been heated by the protostellar luminosity, where the gas temperature is equal to the dust temperature. Although UV heating toward photo-dissociation regions (PDRs) is readily traced by emission from polycyclic aromatic hydrocarbons (PAHs), the PAH abundance toward embedded protostars is too low for them to be used as a tool in this context (Geers et al. 2009). Here we investigate the importance of radiative feedback for a much larger sample of low-mass sources and compare the gas temperatures and involved mass with that of the outflows.

Tracing warm gas ($T \gtrsim 30$ K) in the envelope or in the surroundings requires observations of higher- J transitions of CO, e.g., $J_u \geq 5$, for which ground-based telescopes demand excellent weather conditions on dry observing sites. The CHAMP⁺ instrument, mounted on the Atacama Pathfinder Experiment (APEX) telescope is ideally suited to observe higher- J CO transitions and efficiently map extended sources. The broad line wings of CO 6–5 ($E_u/k = 115$ K) suffer less from opacity effects than CO 3–2 ($E_u/k = 33$ K) (van Kempen et al. 2009a; Yıldız et al. 2012). Moreover, the ambient cloud contribution is smaller for these higher- J transitions, except close to the source position, where the dense protostellar envelope may still contribute. Even higher- J CO lines up to $J_u \sim 50$ were routinely observed with the *Herschel* (Pilbratt et al. 2010) and provide information on the shocked gas in the *Herschel* beam (Herczeg et al. 2012; Goicoechea et al. 2012; Benedettini et al. 2012; Manoj et al. 2013; Green et al. 2013; Nisini et al. 2013; Karska et al. 2013). This currently shocked gas is different from that observed in low- J CO transitions, as is evident from their different spatial distributions (Tafalla et al. 2013; Santangelo et al. 2013).

In this paper, we present an APEX-CHAMP⁺ survey of 26 low-mass young stellar objects (YSOs), which were mapped in CO $J = 6\text{--}5$ and isotopologues in order to trace their outflow activity, following van Kempen et al. (2009a,b) and Yıldız et al. (2012), Papers I, II and III in this series, on individual or more limited samples of sources. These data complement our earlier surveys at lower frequency of CO and other molecules with the *James Clerk Maxwell* Telescope (JCMT) and APEX (e.g., Jørgensen et al. 2002, 2004; van Kempen et al. 2009c). The same sources are covered in the *Herschel* key project, “Water in star-forming regions with *Herschel*” (WISH; van Dishoeck et al. 2011), which has observed H_2O and selected high- J CO lines with HIFI and PACS instruments. Many of the sources are also included in the “Dust, Ice and Gas in Time” program (DIGIT; PI: N. Evans; Green et al. 2013), which has obtained full PACS spectral scans. The results obtained from the ^{12}CO maps are complemented by ^{13}CO 6–5 data of the same sources, with the narrower ^{13}CO 6–5 lines probing the UV photon-heated gas.

The YSOs in our sample cover both the deeply embedded Class 0 stage as well as the less embedded Class I stage (André et al. 2000; Robitaille et al. 2006). Physical models of the dust temperature and density structure of the envelopes have been developed for all sources by Kristensen et al. (2012) through spherically symmetric radiative transfer models of the continuum emission. The full data set covering many sources, together with the envelope models, allows us to address important characteristics of YSOs through the evolution from Class 0 to Class I in a more consistent manner. These characteristics can be inferred from their different morphologies, outflow forces, envelope masses, etc. and eventually be compared with evolutionary

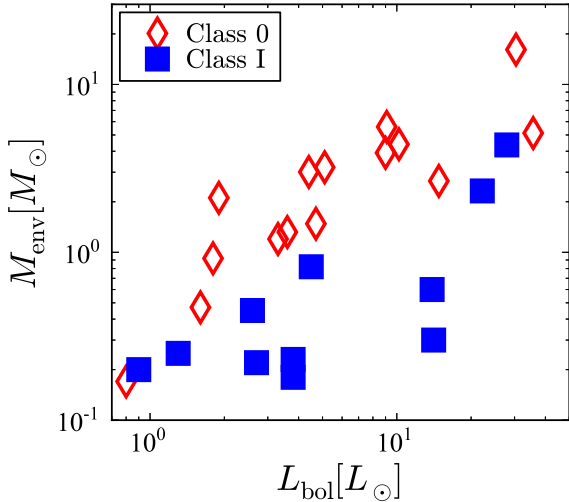


Fig. 1. Envelope mass, M_{env} , vs. bolometric luminosity, L_{bol} , for the surveyed sources. Red diamonds and blue squares indicate Class 0 and Class I sources, respectively.

models. The study presented here is also complementary to that of Yıldız et al. (2013), where only the source position was studied with spectrally resolved CO line profiles from $J = 2-1$ to $10-9$ ($E_{\text{up}} \sim 300$ K), and trends with evolution were examined.

The outline of the paper is as follows. In Sect. 2, the observations and the telescopes where the data have been obtained are described. In Sect. 3, physical parameters obtained from molecular outflows are given and the UV heated gas component is identified. In Sect. 4, these results are discussed, and conclusions from this work are presented in Sect. 5.

2. Sample and observations

2.1. Sample

The sample selection criteria with the coordinates and other basic information of the source list are presented in van Dishoeck et al. (2011) with updates in Kristensen et al. (2012), and is the same as the sample presented in Yıldız et al. (2013). It consists of 15 Class 0 and 11 Class I embedded protostellar sources located in the Perseus, Ophiuchus, Taurus, Chamaeleon, and Serpens molecular clouds. The average distance is 200 pc, with a maximum distance of 450 pc.

Figure 1 presents the envelope mass (M_{env}) as a function of bolometric luminosity (L_{bol}) for all sources. The parameters are taken from the continuum radiative transfer modeling by Kristensen et al. (2012) based on fits of the spectral energy distributions (SEDs) including new *Herschel*-PACS fluxes, as well as the spatial extent of the envelopes observed at submillimeter wavelengths. The envelope mass is measured either at the $T_{\text{dust}} = 10$ K radius or at the $n = 10^4 \text{ cm}^{-3}$ radius, depending on which is smaller. Class 0 and Class I sources are well separated in the diagram, with the Class 0 sources having higher envelope masses. This type of correlation diagram has been put forward by Saraceno et al. (1996) and subsequently used as an evolutionary diagram for embedded YSOs with lower envelope masses representing later stages (e.g., Bontemps et al. 1996; Hogerheijde et al. 1998; Hatchell et al. 2007). In our sample, envelope masses range from $0.04 M_{\odot}$ (Elias 29) to $16 M_{\odot}$ (Ser-SMM1) and the luminosities range from $0.8 L_{\odot}$ (Ced110 IRS4) to $35.7 L_{\odot}$ (NGC 1333-IRAS 2A). The large range of masses and

luminosities makes the sample well suited for studying trends with various source parameters. The range of luminosities studied is similar to that of Bontemps et al. (1996), ~ 0.5 to $15 L_{\odot}$, but our sample is more weighted toward higher luminosities and earlier stages.

2.2. Observations

Molecular line observations of CO in the $J = 6-5$ transitions were done with the 12-m submillimeter Atacama Pathfinder EXperiment (APEX¹; Güsten et al. 2008) at Llano de Chajnantor in Chile, whereas the $J = 3-2$ transition was primarily observed at the 15-m *James Clerk Maxwell* Telescope (JCMT)² at Mauna Kea, Hawaii.

APEX: ^{12}CO and ^{13}CO 6–5 maps of the survey were obtained with the CHAMP+ instrument on APEX between June 2007 and September 2012. The CHAMP+ instrument consists of two heterodyne receiver arrays, each with seven pixel detector elements for simultaneous operations in the 620–720 GHz and 780–950 GHz frequency ranges (Kasemann et al. 2006; Güsten et al. 2008). The observational procedures are explained in detail in van Kempen et al. (2009a,b,c) and Yıldız et al. (2012). Simultaneous observations were done with the following settings of the lower and higher frequency bands: ^{12}CO 6–5 with ^{12}CO 7–6; ^{13}CO 6–5 with [C I] 2–1. ^{12}CO maps cover the entire outflow extent with a few exceptions (L1527, Ced110 IRS4, and L1551-IRS5), whereas ^{13}CO maps cover only a $\sim 100'' \times 100''$ region around the central source position. L1157 is part of the WISH survey, but because it is not accessible from APEX (Dec = $+68^\circ$), no CO 6–5 data are presented.

The APEX beam size is $\sim 9''$ (~ 1800 AU for a source at 200 pc) at 691 GHz. The observations were done using position-switching toward an emission-free reference position. The CHAMP+ instrument uses the fast Fourier transform spectrometer (FFTS) backend (Klein et al. 2006) for all seven pixels with a resolution of 0.183 MHz (0.079 km s^{-1} at 691 GHz). The rms at the source position is listed in Yıldız et al. (2013) for the CO 6–5 and ^{13}CO 6–5 observations and is typically 0.3–0.5 K for the former and 0.1–0.3 K for the latter, both in 0.2 km s^{-1} channels. The rms increases near the map edges where the effective integration time per beam was significantly smaller than in the central parts; near the edges the rms may be twice as high. Apart from the high- J CO observations, some of the 3–2 line observations were also conducted with APEX for a few southern sources, e.g., DK Cha, Ced110 IRS4, and HH46 (van Kempen et al. 2009c).

JCMT: Fully sampled jiggle maps of ^{12}CO and ^{13}CO 3–2 were obtained using the HARP-B instrument mounted on the JCMT (Buckle et al. 2009). HARP-B consists of 16 SIS detectors with 4×4 pixel elements of $15''$ each at $30''$ separation. Most of the maps were obtained through our own dedicated proposals, with a subset obtained from the JCMT public archive³.

¹ This publication is based on data acquired with the Atacama Pathfinder Experiment (APEX). APEX is a collaboration between the Max-Planck-Institut für Radioastronomie, the European Southern Observatory, and the Onsala Space Observatory.

² The *James Clerk Maxwell* Telescope has historically been operated by the Joint Astronomy Centre on behalf of the Science and Technology Facilities Council of the United Kingdom, the National Research Council of Canada and the Netherlands Organisation for Scientific Research.

³ This research used the facilities of the Canadian Astronomy Data Centre operated by the National Research Council of Canada with the support of the Canadian Space Agency.

Table 1. Inclination correction factors.

$i(^{\circ})$	10	30	50	70
c_i	1.2	2.8	4.4	7.1

Notes. Line-of-sight inclinations, where $i = 0^{\circ}$ indicates pole-on (Downes & Cabrit 2007).

The data were acquired on the T_A^* antenna temperature scale and were converted to main-beam brightness temperatures $T_{MB} = T_A^*/\eta_{MB}$ using the beam efficiencies (η_{MB}). The CHAMP⁺ beam efficiencies were taken from the CHAMP⁺ website⁴ and forward efficiencies are 0.95 in all observations. The various beam efficiencies are all given in Yıldız et al. (2013, their Appendix C) and are typically ~ 0.5 . The JCMT beam efficiencies were taken from the JCMT efficiencies database⁵, and 0.63 is used for all HARP-B observations. Calibration errors are estimated to be $\sim 20\%$ for both telescopes. Typical rms noise levels of the $J = 3-2$ data are from 0.05 K to 0.1 K in 0.2 km s⁻¹ channels.

For the data reduction and analysis, the Continuum and Line Analysis Single Dish Software (CLASS program), which is part of the GILDAS software⁶, is used. In particular, linear baselines were subtracted from all spectra. ¹²CO and ¹³CO 6–5 and 3–2 line profiles of the central source positions of all the sources in the sample are presented in Yıldız et al. (2013).

2.3. ¹²CO maps

All spectra are binned to a 0.5 km s⁻¹ velocity resolution for analyzing the outflows. The intensities of the blue and red outflow lobes are calculated by integrating the blue and red emission in each of the spectra separately, where the integration limits are carefully selected for each source by using the 0.2 km s⁻¹ resolution CO 3–2 or 6–5 spectra if the former is not available (see Fig. A.1). First, the inner velocity limit, V_{in} , closest to the source velocity is determined by selecting a spatial region not associated with the outflow. The ¹²CO spectra in this region are averaged to determine the narrow line emission coming from the envelope and surrounding cloud, and V_{in} is estimated from the width of the quiescent emission (see Fig. A.1 in the Appendix). Second, the outer velocity limits V_{out} are determined from the highest S/N spectrum inside each of the blue and red outflow lobes. The outer velocity limits are selected as the velocity where the emission in the spectrum goes down to the 1σ limit for the first time. It therefore excludes extremely high velocity or “bullet” emission which is seen for a few sources. The blue- and red-shifted integrated intensity is measured by integrating over these velocity limits across the entire map, but excluding any extremely high velocity (EHV) or “bullet” emission.

2.3.1. Outflow velocity

The maximum outflow velocity, V_{max} is defined as $|V_{out} - V_{LSR}|$, the total velocity extent measured relative to the source velocity. In order to estimate V_{max} , representative spectra from the blue and red outflow lobes observed in CO 3–2 are selected

⁴ http://www3.mpifr-bonn.mpg.de/div/submmtech/heterodyne/champplus/champ_efficiencies.29-11-13.html

⁵ http://www.jach.hawaii.edu/JCMT/spectral_line/Standards/eff_web.html

⁶ <http://www.iram.fr/IRAMFR/GILDAS>

separately, and V_{out} is measured as described above. The differences between the velocity, where the emission reaches 1σ level (V_{out}) with V_{LSR} are taken as the global V_{max} values for the corresponding blue and red-shifted lobes (Cabrit & Bertout 1992).

Two issues arise when determining V_{max} (e.g., van der Marel et al. 2013; Dunham et al. 2014): first, V_{max} is a function of the rms noise level and generally decreases with increasing rms. For noisy data, V_{max} may be underestimated compared to its true value. For this reason, the 3–2 lines are chosen to determine V_{max} because of their higher S/N than the 6–5 lines. Second, if the outflow lobes are inclined, V_{max} suffers from projection effects. Both effects will increase the value of V_{max} if properly taken into account.

Concerning the second issue, the inclination is difficult to estimate from these data alone; proper-motion studies along with radial velocities are required to obtain an accurate estimate of the inclination. Alternatively, the velocity structure may be modeled assuming some distribution of material, e.g., a wind-driven shell with a Hubble-like flow (Lee et al. 2000), where the inclination then enters as a free parameter. It is defined as the angle between the outflow direction and the line of sight (Cabrit & Bertout 1990, $i = 0^{\circ}$ is pole on). Small radial velocities are expected for outflows which lie in the plane of the sky. Therefore a correction factor for inclination c_i is applied in the calculations. In Table 1, the correction factors from Downes & Cabrit (2007) are tabulated; these correction factors come from detailed outflow modeling and synthetic observations of the model results. Moreover, we note that these correction factors include correction for missing mass within ± 2 km s⁻¹ from the source velocity. The correction factors have been applied to the outflow rate, force and luminosity as listed in Tables 2 and 3. The velocity, as a measured parameter, is not corrected for inclination. The inclination angles are estimated from the outflow maps as follows: if the outflow lobes are overlapping, the outflow is likely very inclined. If the outflow shows low-velocity line wings but a large extent on the sky, the inclination is very likely low. In this way each outflow is classified individually, and divided into inclination bins at 10°, 30°, 50°, and 70°. Our estimates are listed in Tables 2 and 3, and are consistent with the literature where available (Cabrit & Bertout 1992; Gueth et al. 1996; Bourke et al. 1997; Hogerheijde et al. 1997; Micono et al. 1998; Brown & Chandler 1999; Lommen et al. 2008; Tobin et al. 2008; van Kempen et al. 2009b), except for IRAS 15398 for which we find a larger inclination than van Kempen et al. (2009c). Our inclination of IRAS 15398 is consistent with newer values from (Oya et al. 2014). Although the method for determining the outflow inclinations is subjective, the inclinations agree with literature values where available, which lends some credibility to the method, and we estimate that the uncertainty is 30°. That is, the correction introduces a potential systematic error of up to a factor of 2 in the outflow parameters.

The resulting maps of all sources are presented in Figs. 2 and 3 for ¹²CO 6–5 and 3–2, respectively, where blue and red contours show the blue- and red-shifted outflow lobes, respectively. The velocity limits are summarized in Table A.1 in the Appendix. A few maps cover only the central $\sim 2' \times 2'$, specifically the three Class 0 sources NGC 1333-IRAS 2A, L723 mm, L1527, and the two Class I sources Elias 29 and L1551-IRS5. Source-by-source outflow and intensity maps obtained from the CO 6–5 and 3–2 data are presented in Figs. A.2.

Table 2. Outflow properties of the red and blue outflow lobes of Class 0 sources.

Source	Trans.	Inclination [°]	Lobe	R_{CO}^a [AU]	$t_{\text{dyn}}^{a,b}$ [10^3 yr]	$M_{\text{outflow}}^{a,c}$ [M_{\odot}]	$\dot{M}^{d,e}$ [$M_{\odot} \text{ yr}^{-1}$]	$F_{\text{CO}}^{d,f}$ [$M_{\odot} \text{ yr}^{-1} \text{ km s}^{-1}$]	$L_{\text{kin}}^{d,g}$ [L_{\odot}]
L1448MM	CO 3–2	50	Blue	5.9×10^4	5.5	9.0×10^{-2}	7.2×10^{-5}	2.0×10^{-3}	2.8×10^0
			Red	5.9×10^4	9.7	6.2×10^{-2}	2.8×10^{-5}	1.7×10^{-3}	2.3×10^0
NGC 1333-IRAS 2A	CO 6–5	70	Blue	1.4×10^4	2.9	7.9×10^{-3}	2.0×10^{-5}	3.4×10^{-4}	1.7×10^{-1}
			Red	1.4×10^4	3.9	2.2×10^{-2}	4.0×10^{-5}	2.0×10^{-3}	1.7×10^0
	CO 3–2	70	Blue	2.4×10^4	4.8	8.5×10^{-2}	1.3×10^{-4}	2.6×10^{-3}	1.2×10^0
			Red	2.4×10^4	6.4	6.9×10^{-2}	7.7×10^{-5}	4.8×10^{-3}	5.4×10^0
NGC 1333-IRAS 4A	CO 6–5	50	Blue	2.5×10^4	5.3	8.1×10^{-3}	6.7×10^{-6}	1.5×10^{-4}	5.6×10^{-2}
			Red	3.5×10^4	8.4	1.9×10^{-2}	9.9×10^{-6}	5.4×10^{-4}	5.4×10^{-1}
	CO 3–2	50	Blue	2.8×10^4	6.1	2.1×10^{-2}	1.5×10^{-5}	3.5×10^{-4}	1.6×10^{-1}
			Red	3.9×10^4	9.3	2.5×10^{-2}	1.2×10^{-5}	1.7×10^{-3}	1.8×10^0
NGC 1333-IRAS 4B	CO 6–5	10	Blue	2.4×10^3	0.6	8.2×10^{-4}	1.6×10^{-6}	3.2×10^{-5}	7.4×10^{-3}
			Red	1.2×10^3	0.4	7.3×10^{-4}	2.2×10^{-6}	1.6×10^{-4}	1.8×10^{-1}
	CO 3–2	10	Blue	3.5×10^3	0.8	8.3×10^{-4}	1.3×10^{-6}	2.9×10^{-5}	1.1×10^{-2}
			Red	2.4×10^3	0.9	2.7×10^{-3}	3.6×10^{-6}	1.9×10^{-4}	1.8×10^{-1}
L1527	CO 6–5	70	Blue	1.5×10^4	9.1	2.3×10^{-3}	1.8×10^{-6}	3.1×10^{-5}	9.9×10^{-3}
			Red	1.1×10^4	6.5	2.5×10^{-3}	2.7×10^{-6}	1.1×10^{-4}	7.5×10^{-2}
	CO 3–2	70	Blue	3.2×10^4	20.6	1.0×10^{-2}	3.5×10^{-6}	6.1×10^{-5}	2.0×10^{-2}
			Red	1.1×10^4	6.5	9.0×10^{-3}	9.8×10^{-6}	3.8×10^{-4}	2.6×10^{-1}
Ced110-IRS4	CO 6–5	30	Blue	3.8×10^3	4.2	2.7×10^{-4}	1.8×10^{-7}	2.1×10^{-6}	4.6×10^{-4}
			Red	3.8×10^3	4.7	2.5×10^{-4}	1.5×10^{-7}	4.1×10^{-6}	2.0×10^{-3}
BHR71	CO 6–5	70	Blue	4.4×10^4	13.4	3.4×10^{-2}	1.8×10^{-5}	7.7×10^{-4}	6.2×10^{-1}
			Red	4.0×10^4	8.5	6.9×10^{-2}	5.8×10^{-5}	7.7×10^{-4}	3.3×10^{-1}
IRAS 15398	CO 6–5	30	Blue	2.6×10^3	1.4	3.4×10^{-4}	1.7×10^{-6}	6.4×10^{-6}	1.4×10^{-3}
			Red	2.6×10^3	1.2	2.7×10^{-4}	1.5×10^{-6}	2.6×10^{-5}	2.0×10^{-2}
	CO 3–2	30	Blue	3.2×10^3	1.8	4.4×10^{-4}	1.8×10^{-6}	9.2×10^{-6}	2.5×10^{-3}
			Red	2.0×10^3	0.9	2.5×10^{-4}	1.9×10^{-6}	2.8×10^{-5}	2.0×10^{-2}
L483MM	CO 6–5	70	Blue	1.2×10^4	5.2	4.2×10^{-3}	5.7×10^{-6}	6.7×10^{-5}	1.6×10^{-2}
			Red	1.0×10^4	4.4	3.4×10^{-3}	5.4×10^{-6}	2.1×10^{-4}	1.5×10^{-1}
	CO 3–2	70	Blue	1.4×10^4	6.2	7.0×10^{-3}	8.0×10^{-6}	7.7×10^{-5}	1.6×10^{-2}
			Red	1.0×10^4	4.4	8.5×10^{-3}	1.4×10^{-5}	5.1×10^{-4}	3.4×10^{-1}
Ser-SMM1	CO 6–5	50	Blue	3.4×10^4	8.4	1.6×10^{-2}	8.2×10^{-6}	1.5×10^{-4}	5.7×10^{-2}
			Red	1.8×10^4	3.9	1.2×10^{-2}	1.4×10^{-5}	8.7×10^{-4}	9.8×10^{-1}
	CO 3–2	50	Blue	3.4×10^4	8.6	6.4×10^{-2}	3.3×10^{-5}	6.7×10^{-4}	2.8×10^{-1}
			Red	1.8×10^4	3.9	3.3×10^{-2}	3.7×10^{-5}	2.3×10^{-3}	2.7×10^0
Ser-SMM4	CO 6–5	30	Blue	1.8×10^4	4.6	2.4×10^{-2}	1.5×10^{-5}	2.5×10^{-4}	9.3×10^{-2}
			Red	1.8×10^4	7.3	2.8×10^{-2}	1.1×10^{-5}	5.9×10^{-4}	5.8×10^{-1}
	CO 3–2	30	Blue	1.8×10^4	4.6	1.6×10^{-1}	9.9×10^{-5}	2.0×10^{-3}	8.3×10^{-1}
			Red	1.8×10^4	7.6	1.3×10^{-1}	4.7×10^{-5}	2.8×10^{-3}	2.9×10^0
Ser-SMM3	CO 6–5	50	Blue	4.6×10^3	1.0	6.9×10^{-3}	3.1×10^{-5}	6.0×10^{-4}	2.6×10^{-1}
			Red	4.6×10^3	1.6	3.0×10^{-3}	8.1×10^{-6}	4.9×10^{-4}	5.4×10^{-1}
	CO 3–2	50	Blue	4.6×10^3	1.0	2.7×10^{-2}	1.2×10^{-4}	2.4×10^{-3}	1.0×10^0
			Red	4.6×10^3	1.6	1.1×10^{-2}	3.0×10^{-5}	1.8×10^{-3}	1.9×10^0
B335	CO 6–5	70	Blue	6.2×10^3	3.4	4.7×10^{-4}	9.9×10^{-7}	2.3×10^{-5}	9.4×10^{-3}
			Red	8.8×10^3	4.8	1.3×10^{-3}	1.9×10^{-6}	9.0×10^{-5}	7.6×10^{-2}
	CO 3–2	70	Blue	1.0×10^4	5.3	3.7×10^{-3}	4.9×10^{-6}	1.3×10^{-4}	6.2×10^{-2}
			Red	7.5×10^3	4.1	5.4×10^{-3}	9.3×10^{-6}	4.7×10^{-4}	4.3×10^{-1}
L723MM	CO 6–5	50	Blue	1.2×10^4	4.1	6.0×10^{-3}	6.6×10^{-6}	1.8×10^{-4}	1.0×10^{-1}
			Red	1.2×10^4	3.8	7.5×10^{-3}	8.5×10^{-6}	5.5×10^{-4}	6.3×10^{-1}
	CO 3–2	50	Blue	1.8×10^4	6.0	3.0×10^{-2}	2.2×10^{-5}	6.5×10^{-4}	3.7×10^{-1}
			Red	1.8×10^4	5.8	4.2×10^{-2}	3.2×10^{-5}	2.2×10^{-3}	2.8×10^0
L1157	CO 3–2	70	Blue	4.4×10^4	16.8	1.2×10^{-1}	4.9×10^{-5}	5.0×10^{-4}	1.9×10^{-1}
			Red	5.2×10^4	14.1	1.5×10^{-1}	7.3×10^{-5}	3.2×10^{-3}	3.1×10^0

Notes. ^(a) Outflow extents and outflow masses are not corrected for inclination. ^(b) Dynamical timescale. ^(c) Constant temperature of 75 K is assumed for both CO 6–5 and CO 3–2 calculations. ^(d) Corrected for inclination as explained in Sect. 3.2. ^(e) Mass outflow rate. ^(f) Outflow force. ^(g) Kinetic luminosity.

Table 3. Outflow properties of the red and blue outflow lobes of Class I sources.

Source	Trans.	Inclination [°]	Lobe	R_{CO}^a [AU]	$t_{\text{dyn}}^{a,b}$ [10^3 yr]	$M_{\text{outflow}}^{a,c}$ [M_{\odot}]	$\dot{M}^{d,e}$ [$M_{\odot} \text{ yr}^{-1}$]	$F_{\text{CO}}^{d,f}$ [$M_{\odot} \text{ yr}^{-1} \text{ km s}^{-1}$]	$L_{\text{kin}}^{d,g}$ [L_{\odot}]
L1489	CO 6–5	50	Blue	3.5×10^3	1.2	4.0×10^{-5}	1.5×10^{-7}	1.8×10^{-6}	3.2×10^{-4}
			Red	2.1×10^3	1.3	1.3×10^{-4}	4.6×10^{-7}	2.3×10^{-5}	2.0×10^{-2}
	CO 3–2	50	Blue	3.5×10^3	1.2	6.9×10^{-4}	2.5×10^{-6}	3.9×10^{-5}	1.3×10^{-2}
			Red	2.1×10^3	1.3	7.1×10^{-4}	2.5×10^{-6}	1.2×10^{-4}	1.1×10^{-1}
L1551-IRS5	CO 3–2	70	Blue	1.7×10^4	8.2	7.4×10^{-3}	6.4×10^{-6}	9.3×10^{-5}	2.7×10^{-2}
			Red	1.7×10^4	6.7	9.6×10^{-3}	1.0×10^{-5}	4.2×10^{-4}	3.1×10^{-1}
TMR1	CO 6–5	50	Blue	4.9×10^3	2.9	1.2×10^{-4}	1.8×10^{-7}	2.0×10^{-6}	4.9×10^{-4}
			Red	3.5×10^3	4.5	2.4×10^{-4}	2.3×10^{-7}	8.0×10^{-6}	4.8×10^{-3}
	CO 3–2	50	Blue	4.9×10^3	3.0	2.6×10^{-4}	3.8×10^{-7}	5.1×10^{-6}	1.4×10^{-3}
			Red	3.5×10^3	4.5	5.8×10^{-4}	5.7×10^{-7}	2.0×10^{-5}	1.3×10^{-2}
TMC1A	CO 6–5	50	Blue	5.6×10^3	1.4	2.3×10^{-4}	7.2×10^{-7}	1.3×10^{-5}	7.6×10^{-3}
			Red	2.1×10^3	1.8	4.0×10^{-6}	9.5×10^{-9}	3.7×10^{-7}	2.4×10^{-4}
	CO 3–2	50	Blue	5.6×10^3	1.6	2.8×10^{-3}	7.8×10^{-6}	1.1×10^{-4}	3.7×10^{-2}
			Red	1.7×10^3	1.5	1.4×10^{-4}	4.1×10^{-7}	1.8×10^{-5}	1.4×10^{-2}
TMC1	CO 6–5	50	Blue	3.5×10^3	1.2	1.3×10^{-4}	4.7×10^{-7}	3.2×10^{-6}	4.0×10^{-4}
			Red	4.9×10^3	1.6	3.8×10^{-4}	1.1×10^{-6}	5.0×10^{-5}	4.4×10^{-2}
	CO 3–2	50	Blue	3.5×10^3	1.2	5.6×10^{-4}	2.0×10^{-6}	2.7×10^{-5}	7.9×10^{-3}
			Red	2.1×10^3	0.7	1.4×10^{-3}	8.9×10^{-6}	4.2×10^{-4}	3.7×10^{-1}
HH46-IRS	CO 6–5	50	Blue	1.1×10^4	9.9	2.6×10^{-3}	1.2×10^{-6}	1.2×10^{-5}	2.9×10^{-3}
			Red	2.5×10^4	7.9	3.2×10^{-2}	1.8×10^{-5}	7.7×10^{-4}	6.5×10^{-1}
	CO 3–2	50	Blue	1.6×10^4	13.6	2.2×10^{-2}	7.2×10^{-6}	2.5×10^{-4}	1.7×10^{-1}
			Red	2.5×10^4	7.9	2.2×10^{-2}	1.2×10^{-5}	8.1×10^{-4}	9.3×10^{-1}
DK Cha	CO 6–5	10	Blue	1.8×10^3	1.6	1.8×10^{-4}	1.3×10^{-7}	6.6×10^{-7}	7.3×10^{-5}
			Red	1.8×10^3	0.9	1.1×10^{-4}	1.4×10^{-7}	2.5×10^{-6}	4.4×10^{-4}
GSS30-IRS1	CO 6–5	30	Blue	1.5×10^4	5.5	1.5×10^{-2}	7.9×10^{-6}	5.1×10^{-5}	1.1×10^{-2}
			Red	1.5×10^4	4.9	8.9×10^{-3}	5.1×10^{-6}	2.0×10^{-4}	1.6×10^{-1}
	CO 3–2	30	Blue	1.5×10^4	5.5	2.1×10^{-2}	1.1×10^{-5}	6.0×10^{-5}	8.8×10^{-3}
			Red	1.5×10^4	4.9	2.4×10^{-2}	1.4×10^{-5}	4.6×10^{-4}	3.0×10^{-1}
Elias 29	CO 6–5	30	Blue	7.5×10^3	3.1	6.4×10^{-4}	5.7×10^{-7}	4.4×10^{-6}	1.2×10^{-3}
			Red	5.0×10^3	1.7	6.3×10^{-4}	1.0×10^{-6}	3.9×10^{-5}	2.7×10^{-2}
	CO 3–2	30	Blue	7.5×10^3	3.6	1.4×10^{-3}	1.1×10^{-6}	6.6×10^{-6}	1.0×10^{-3}
			Red	7.5×10^3	3.3	1.8×10^{-3}	1.5×10^{-6}	5.7×10^{-5}	3.9×10^{-2}
Oph-IRS63	CO 6–5	50	Blue	3.8×10^3	1.6	1.0×10^{-4}	2.8×10^{-7}	4.3×10^{-6}	2.1×10^{-3}
			Red	3.8×10^3	4.2	8.6×10^{-5}	9.0×10^{-8}	2.1×10^{-6}	8.3×10^{-4}
	CO 3–2	50	Blue	8.8×10^3	3.7	7.0×10^{-4}	8.4×10^{-7}	5.6×10^{-6}	1.5×10^{-3}
			Red	5.0×10^3	7.4	5.0×10^{-4}	3.0×10^{-7}	5.2×10^{-6}	2.2×10^{-3}
RNO91	CO 6–5	50	Blue	3.1×10^3	1.0	2.5×10^{-4}	1.1×10^{-6}	2.9×10^{-5}	2.1×10^{-2}
			Red	1.9×10^3	2.5	7.3×10^{-5}	1.3×10^{-7}	1.1×10^{-6}	1.8×10^{-4}
	CO 3–2	50	Blue	6.2×10^3	2.0	3.5×10^{-3}	7.7×10^{-6}	1.0×10^{-4}	4.1×10^{-2}
			Red	1.9×10^3	2.5	2.3×10^{-4}	4.0×10^{-7}	2.3×10^{-6}	2.6×10^{-4}

Notes. ^(a) Outflow extents and outflow masses are not corrected for inclination. ^(b) Dynamical timescale. ^(c) Constant temperature of 75 K is assumed for both CO 6–5 and CO 3–2 calculations. ^(d) Corrected for inclination as explained in Sect. 3.2. ^(e) Mass outflow rate. ^(f) Outflow force. ^(g) Kinetic luminosity.

2.4. ^{13}CO maps

The ^{13}CO 6–5 and 3–2 transitions were mapped around the central $\sim 1' \times 1'$ region, corresponding to typically $\sim 10^4$ AU \times 10^4 AU. The total integrated intensity is measured for all the sources and presented in Table C.1–26 of Yıldız et al. (2013) for the source positions. All maps are presented as contour maps in Figs. A.3 and as spectral maps in Figs. A.5, A.6 in the Appendix.

3. Results

3.1. Outflow morphology

All sources show strong outflow activity in both CO transitions, $J = 6-5$ and $3-2$, as is evident from both the maps

and spectra (Figs. 2, 3, and Figs. A.1–A.2). The advantage of the CO 6–5 maps is that they have higher spatial resolution by a factor of 2 than the CO 3–2 maps. On the other hand, the CO 3–2 maps have the advantage of higher S/N than the CO 6–5 maps by typically a factor of 4 in main beam temperature.

Most sources show a clear blue-red bipolar structure. In a few cases only one lobe is observed. Specific examples are TMC1A, which shows no red-shifted outflow lobe, and HH46, which has only a very small blue-shifted outflow lobe. One explanation is that these sources are at the edge of the cloud and that there is no cloud material to run into (van Kempen et al. 2009b). For L723 mm, NGC 1333-IRAS 2A and BHR71, two outflows are driven by two independent protostars (Lee et al. 2002; Parise et al. 2006; Codella et al. 2014) and both outflows are detected in our CO 3–2 maps.

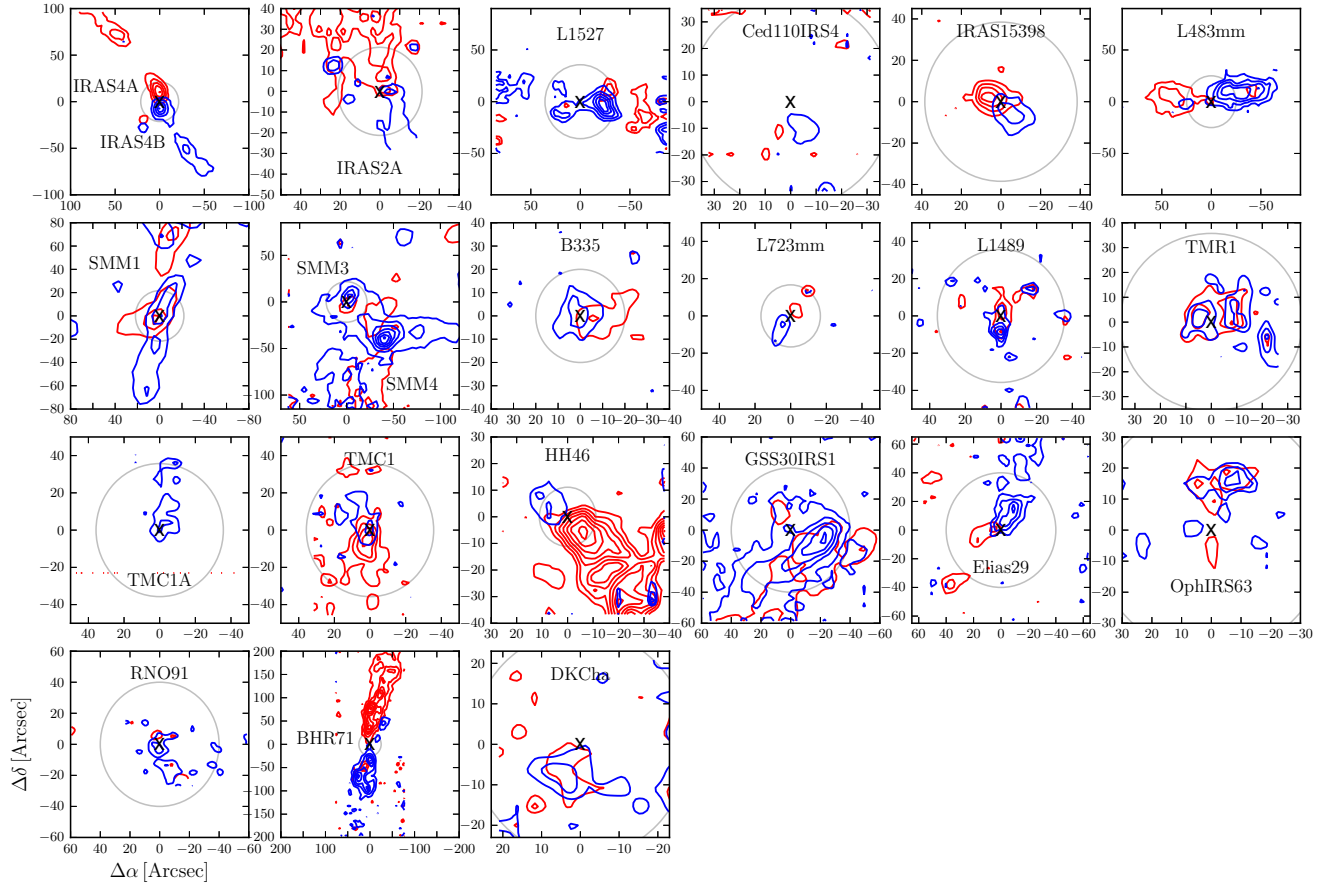


Fig. 2. Overview of the outflows traced by the ^{12}CO 6–5 observations with the APEX-CHAMP⁺ instrument. Contour levels are given in Table A.1 and the source is located at (0, 0) in each map, with the exception of the maps of NGC 1333-IRAS 4A and IRAS 4B, and Ser-SMM3 and Ser-SMM4, which are located in the same maps and centered on NGC 1333-IRAS 4A and Ser-SMM3, respectively. The circle in each plot corresponds to a region of 5000 AU radius at the distance of each source. Velocity ranges over which the integration was done are provided in Table A.1.

In CO 6–5, only one outflow shows up toward L723 mm and NGC 1333-IRAS 2A, whereas both outflows are seen toward BHR71.

Visual inspection shows that the Class 0 outflows are more collimated than their Class I counterparts as expected (e.g., Arce et al. 2007). The length of the outflows can be quantified for most of the sources. R_{CO} is defined as the total outflow extent assuming that the outflows are fully covered in the map. R_{CO} is measured separately for the blue and red outflow lobes as the projected size, with sometimes significantly different values. R_{CO} as measured from CO 6–5 is applied to CO 3–2 in the cases where the CO 6–5 maps are larger than their 3–2 counterparts. Toward some sources, e.g., DK Cha and NGC 1333-IRAS 4B, the blue and red outflow lobes overlap, likely because the outflows are observed nearly pole on. In other cases the outflow lobes cannot be properly isolated from nearby neighboring outflow lobes. Such a confusion is most pronounced in Ophiuchus (e.g., GSS30-IRS1). In those cases, R_{CO} could not be properly estimated and the estimated value is a lower limit. Figure 4 shows a histogram of total R_{CO} for Class 0 and I sources. Class 0 sources show a nearly flat distribution across the measured range of extents, whereas few Class I sources show large outflows (L1551 is a notable exception). In Fig. 5, R_{CO} is plotted against $R_{10\text{K}}$, the radius of the modeled envelope within a 10 K radius. The outflowing gas typically extends to much greater distances than the surrounding envelope and thus influences the surrounding cloud material directly.

3.2. Outflow parameters

In the following, different outflow parameters, including mass, force and luminosity, are measured. These parameters have previously been determined from lower- J lines for several young stellar objects (e.g., Cabrit & Bertout 1992; Bontemps et al. 1996; Hogerheijde et al. 1998; Hatchell et al. 2007; Curtis et al. 2010; van der Marel et al. 2013; Dunham et al. 2014) and more recently from CO 6–5 by van Kempen et al. (2009b) and Yıldız et al. (2012) for a small subset of the sources presented here. All results are listed in Tables 2 and 3. Uncertainties in the methods are discussed extensively in van der Marel et al. (2013).

3.2.1. Outflow mass

One of the most basic outflow parameters is the mass. The inferred mass depends on three assumptions: the line opacity, the distribution of level populations, and the CO abundance with respect to H_2 . In the following, we assume that the line wings are optically thin, as has been demonstrated observationally for CO 6–5 for a few sources with massive outflows (e.g., NGC 1333-IRAS 4A, Yıldız et al. 2012). CO 3–2 emission is also assumed optically thin in the following, although that assumption may not be fully valid (see discussion below). The level populations are assumed to follow a Boltzmann distribution with a single temperature, T_{ex} . Finally, the abundance ratio is taken as $[\text{H}_2/^{12}\text{CO}] = 1.2 \times 10^4$, as in Yıldız et al. (2012).

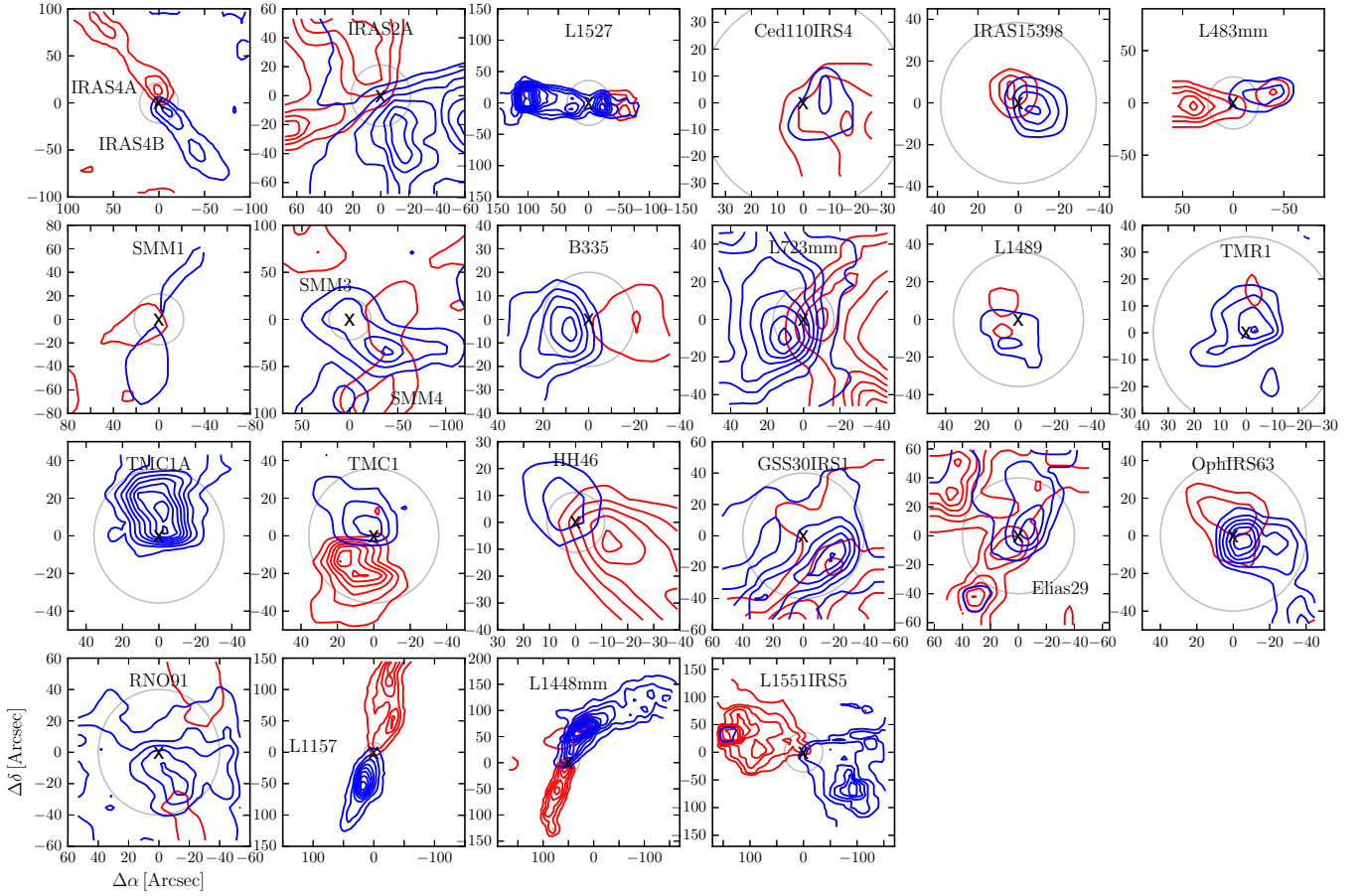


Fig. 3. Overview of the entire set of outflows traced by the ^{12}CO 3–2 observations with the JCMT and APEX. Contour levels are given in Table A.1 and the source is located at (0, 0) in each map, with the exception of the maps of NGC 1333-IRAS 4A and NGC 1333-IRAS 4B, and Ser-SMM3 and Ser-SMM4, which are located in the same maps and centered on NGC 1333-IRAS 4A and Ser-SMM3, respectively. The circle in each plot corresponds to a region of 5000 AU radius at the distance of each source. Velocity ranges over which the integration was done are provided in Table A.1.

The upper level column density per statistical weight in a single pixel ($4''.5 \times 4''.5$ for CO 6–5, $7''.5 \times 7''.5$ for CO 3–2) is calculated as

$$\frac{N_u}{g_u} = \frac{\beta v^2 \int T_{\text{mb}} dV}{A_{ul} g_u}. \quad (1)$$

The constant β is $8\pi k/hc^3 = 1937 \text{ cm}^{-2} (\text{GHz}^2 \text{ K km})^{-1}$. The remaining parameters are for the specific transition, where ν is the frequency, A_{ul} is the Einstein A coefficient and $g_u = 2J + 1$.

The total CO column density in a pixel, N_{total} , is

$$N_{\text{total}} = \frac{N_u}{g_u} Q(T) e^{E_u/kT_{\text{ex}}}; \quad (2)$$

$Q(T)$ is the partition function corresponding to a specific excitation temperature, T_{ex} , which is assumed to be 75 K for both CO 3–2 and CO 6–5 observations (van Kempen et al. 2009b; Yıldız et al. 2012, 2013). Changing T_{ex} by ± 30 K changes the inferred column densities by only 10–20%.

The mass is calculated as

$$M_{\text{outflow}} = \mu_{\text{H}_2} m_{\text{H}} A \left[\frac{\text{H}_2}{^{12}\text{CO}} \right] \sum_j N_{\text{total},j} \quad (3)$$

where the factor $\mu_{\text{H}_2} = 2.8$ includes the contribution of helium (Kauffmann et al. 2008) and m_{H} is the mass of the hydrogen

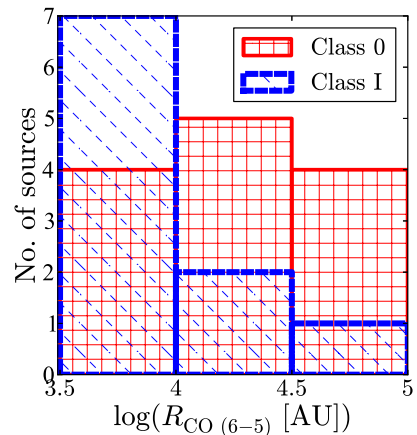


Fig. 4. Histogram of total R_{CO} (blue- and red-shifted outflows combined) is shown for Class 0 (red) and Class I (blue) sources. (R_{CO} is not corrected for inclination.)

atom. A is the surface area of one pixel j . The sum is over all outflow pixels.

The mass may be underestimated if the ^{12}CO line emission is optically thick. ^{13}CO data exist toward most outflows (see above) but the S/N of these data is typically too low to properly measure the opacity in the line wings, except for at the

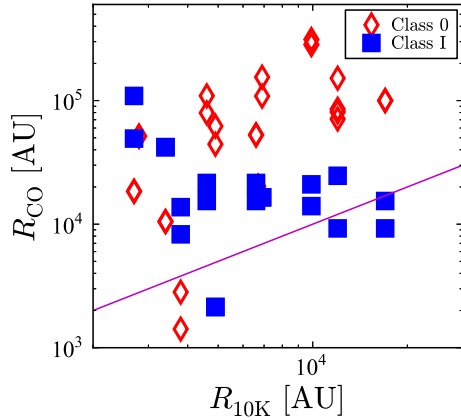


Fig. 5. R_{CO} is plotted against $R_{10\text{K}}$, the radius of the modeled envelope within 10 K radius. The black line is for $R_{\text{CO}} = R_{10\text{K}}$, showing that almost all sources follow $R_{\text{CO}} > R_{10\text{K}}$ and that R_{CO} is larger for Class 0 than Class I sources.

source position where the signal naturally is the strongest. The ^{13}CO line wings do not extend beyond the inner velocity limits. NGC 1333-IRAS 4A is one of the few sources where line wings are detected in ^{13}CO at the outflow positions (Fig. 11 in Yıldız et al. 2012), and it is clear that at the velocity ranges considered here, the line emission is optically thin ($\tau < 1$); the same is true for the outflows studied by van der Marel et al. (2013) in CO 3–2 emission in Ophiuchus (their Fig. 4), where deep pointed observations of ^{13}CO 3–2 were required to measure the opacity. That study concluded that the opacity does not play a significant role when determining the outflow parameters. Similarly, Dunham et al. (2014) conclude that CO 3–2 may be optically thick at velocities less than 2 km s^{-1} offset from the source velocity, velocities which are excluded from our analysis because of the risk of cloud contamination. Potentially more problematic is the missing mass at low velocities. The missing mass is moving close to the systemic velocity and it is not possible to disentangle this mass from the surrounding cloud material, an effect which may introduce a typical uncertainty of a factor of 2–3 (Downes & Cabrit 2007). However, the correction factors derived by the same authors and implemented here account for that missing mass. ^{12}CO 6–5 emission will be less affected by this confusion than the ^{12}CO 3–2 emission, simply because of the different excitation conditions required.

3.2.2. Outflow force

One of the most important outflow parameters is the outflow force, F_{CO} . The best method for computing the outflow force is still debated and the results suffer from ill-constrained observational parameters, such as inclination, i . van der Marel et al. (2013) compare seven different methods proposed in the literature to calculate outflow forces. The “separation method” (see below) in their paper is found to be the preferred method, which is less affected by the observational biases. The method can also be applied to low spatial resolution observations or incomplete maps. Uncertainties are estimated to be a factor of 2–3.

In the following, the outflow force is calculated separately for the blue- and red-shifted lobes, only including emission above the 3σ level. The mass is calculated for each channel separately and multiplied by the central velocity of that particular channel. The integral runs over velocities from V_{in} to V_{out} . They

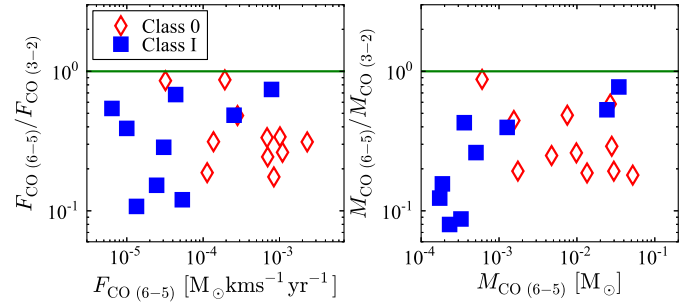


Fig. 6. Outflow forces (left) and outflow masses (right), calculated from CO 6–5 and 3–2 emission are compared for Class 0 and I sources. Green lines are for a ratio of 1.

are then summed and the sum is over all pixels j in the map with outflow emission. The outflow force is calculated for the red- and blue-shifted outflow lobes separately. This method is formulated as:

$$F_{\text{CO}} = c_i \frac{V_{\text{max}} \sum_j \left[\int M(V') V' dV' \right]_j}{R_{\text{CO}}}, \quad (4)$$

where c_i is the inclination correction (Table 1), and R_{CO} is the projected size of the red- or blue-shifted outflow lobe. The outflow force is computed separately from the CO 3–2 and 6–5 maps of the same source (see Tables 2 and 3).

The difference in outflow force between the red and blue outflow lobes ranges from ~ 1 up to a factor of 10. For sources with a low outflow force such as Oph IRS63 ($< 10^{-5} M_{\odot} \text{ yr}^{-1} \text{ km s}^{-1}$) this is a result of differences in the inferred outflow mass per lobe, which, in these specific cases, is primarily a result of low S/N. In these cases, the overall uncertainty on the outflow force is high, up to a factor of 10. In other cases, such as HH46 as mentioned above, there is a real asymmetry between the different lobes which is caused by a difference in the surrounding environment. In the following, only the sum of the outflow forces of both lobes as measured from each outflow lobe will be used.

Figure 6 shows how the outflow forces and outflow masses calculated from CO 3–2 and 6–5 differ. For strong outflows, there is a factor of a few difference in the two calculations, with differences up to an order of magnitude for the weaker outflow sources. Although the CO 6–5 emission suffers less from opacity effects and so recovers more emission/mass at lower velocities, this effect is overwhelmed by the lower S/N of the CO 6–5 emission. The fact that the masses and outflow forces derived from the 6–5 data are systematically lower than those from the 3–2 data is likely due to the same effect (van der Marel et al. 2013). Moreover, if CO 6–5 traces slightly warmer gas than CO 3–2 (Yıldız et al. 2013) then the mass traced by this line will be lower than that traced by CO 3–2. Both effects work to systematically lower the CO 6–5 masses, which in turn leads to lower outflow forces.

Figure 7 displays F_{CO} from CO 6–5 for Class 0 and Class I sources separately. Generally, Class 0 sources have higher outflow forces and are thus more powerful than their Class I counterparts (Bontemps et al. 1996). The Class I source with an exceptionally high outflow force is HH46.

3.3. Other outflow parameters

Other outflow parameters that characterize the outflow activity are the dynamical age, t_{dyn} , mass outflow rate, \dot{M}_{outflow} , and kinetic luminosity, L_{kin} .

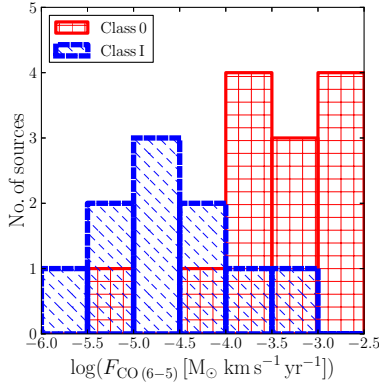


Fig. 7. Histograms of calculated total outflow force F_{CO} are shown for Class 0 (red) and Class I (blue) sources.

Table 4. Median values of the outflow parameters.

	M_{outflow} [M_{\odot}]	\dot{M} [$M_{\odot} \text{ yr}^{-1}$]	F_{CO} [$M_{\odot} \text{ km s}^{-1} \text{ yr}^{-1}$]	L_{kin} [L_{\odot}]
CO 6–5				
Class 0	9.8×10^{-3}	1.5×10^{-5}	6.9×10^{-4}	6.0×10^{-1}
Class I	3.4×10^{-4}	8.4×10^{-6}	2.8×10^{-5}	1.2×10^{-1}
Total	2.2×10^{-3}	1.0×10^{-5}	1.4×10^{-4}	1.9×10^{-1}
CO 3–2				
Class 0	7.2×10^{-2}	5.4×10^{-5}	2.9×10^{-3}	2.9×10^0
Class I	3.1×10^{-3}	3.0×10^{-5}	1.4×10^{-4}	1.4×10^0
Total	1.7×10^{-2}	3.3×10^{-5}	5.2×10^{-4}	1.9×10^0

Assuming that the outflow moves with a constant velocity over the extent of the outflow, the dynamical age is determined as

$$t_{\text{dyn}} = \frac{R_{\text{CO}}}{V_{\text{max}}}. \quad (5)$$

This age is a lower limit on the age of the protostar (Curtis et al. 2010) if the outflowing material is decelerated, e.g., through interactions with the ambient surrounding material. On the other hand, the outflow may be significantly younger since the velocities of the central jet that drives the molecular outflow are typically higher than 100 km s^{-1} and what is observed in these colder low- J CO lines may just be the outer shell which is currently undergoing acceleration, not deceleration. See, e.g., Downes & Cabrit (2007) for a more complete discussion. The outflow mass loss rate is computed according to

$$\dot{M}_{\text{outflow}} = \frac{M_{\text{outflow}}}{t_{\text{dyn}}}. \quad (6)$$

The kinetic luminosity is given by

$$L_{\text{kin}} = \frac{1}{2} F_{\text{CO}} V_{\text{max}}. \quad (7)$$

Outflow parameters of F_{CO} , \dot{M} , and L_{kin} with inclination corrections are presented in Tables 2 and 3. However, M_{outflow} , R_{CO} , t_{dyn} , and V_{max} are not corrected for inclination, since they are measured quantities. The median values of the results are given in Table 4.

3.4. Correlations

Most previous studies of the outflow force were done using CO 1–0, 2–1, or 3–2 (e.g., Cabrit & Bertout 1992; Bontemps et al. 1996; Hogerheijde et al. 1998; Hatchell et al. 2007; van Kempen et al. 2009c; Dunham et al. 2014). The opacity decreases with excitation, as suggested by, e.g., the observations reported in Dunham et al. (2014), but without targeted, deep surveys of ^{13}CO , it is difficult to quantify how much the CO column density is underestimated. Furthermore, cloud or envelope emission may contribute to the emission at the lowest outflow velocities at which the bulk of the mass is flowing. With our CO 6–5 observations, some of the above-mentioned issues can be avoided, or their effects can be lessened. Thus, it is important to revisit the correlations of outflow force with bolometric luminosity and envelope mass using these new measurements.

In Fig. 8, F_{CO} is plotted against L_{bol} , M_{env} , and M_{outflow} , where the F_{CO} and M_{outflow} values are taken from the CO 6–5 data. The best fit between F_{CO} and L_{bol} is shown with the green line corresponding to

$$\log(F_{\text{CO}}) = -(4.71 \pm 0.02) + (1.13 \pm 0.37) \log(L_{\text{bol}}). \quad (8)$$

Outflows from Class 0 and Class I sources are well-separated; Class 0 sources show more powerful outflows compared to Class I sources of similar luminosity. The Pearson correlation coefficients are $r = 0.62, 0.83,$ and 0.64 for all sources, Class 0, and Class I sources, corresponding to confidences of $2.9, 2.9,$ and 1.9σ , respectively.

The best fit between F_{CO} and M_{env} is described as

$$\log(F_{\text{CO}}) = -(3.95 \pm 0.37) + (1.24 \pm 0.21) \log(M_{\text{env}}) \quad (9)$$

and Pearson correlation coefficients are $r = 0.81, 0.82,$ and 0.56 ($3.8, 2.8$ and 1.7σ) for all sources, Class 0, and Class I, respectively. Since early Class 0 sources have higher accretion rates their outflow force is much higher than for the Class I sources (see, e.g., Bontemps et al. 1996, for a full discussion). Finally, as expected, a strong correlation is found between F_{CO} and M_{outflow} with a Pearson correlation coefficient of $r = 0.92$ for all sources (4.3σ), not surprisingly since F_{CO} is nearly proportional to M_{outflow} . The best fit is described as

$$\log(F_{\text{CO}}) = -(1.71 \pm 0.02) + (0.88 \pm 0.62) \log(M_{\text{CO}}). \quad (10)$$

Previously, Bontemps et al. (1996) surveyed 45 sources using CO 2–1 observations with small-scale maps. In Fig. 8, the blue and green dashed lines of F_{CO} vs. L_{bol} and M_{env} show the fit results from their Figs. 5 and 6 (Bontemps et al. 1996). Since their number of Class I sources is higher than Class 0 sources, the fit was only done for Class I sources in F_{CO} vs. L_{bol} . In Fig. 8, the blue solid line only shows the fit for Class I sources and the correlation is described by,

$$\log(F_{\text{CO}}) = -(5.14 \pm 0.29) + (0.98 \pm 0.55) \log(L_{\text{bol}}). \quad (11)$$

In the F_{CO} vs. M_{env} plot, the fits are shown as green lines for the entire sample. The Bontemps et al. (1996) sample is weighted toward lower luminosities ($<10 L_{\text{bol}}$), where our F_{CO} measurements from the CO 6–5 data follow their relation for Class I sources obtained from 2–1 data, but with a shift to a factor of a few higher values of F_{CO} . However, given the scatter in the results for low L_{bol} sources, this difference is hardly significant.

Examining the same outflow parameters measured using the CO 3–2 transition, and their correlation with the same outflow parameters, a similar picture arises (Fig. A.4). However, for the

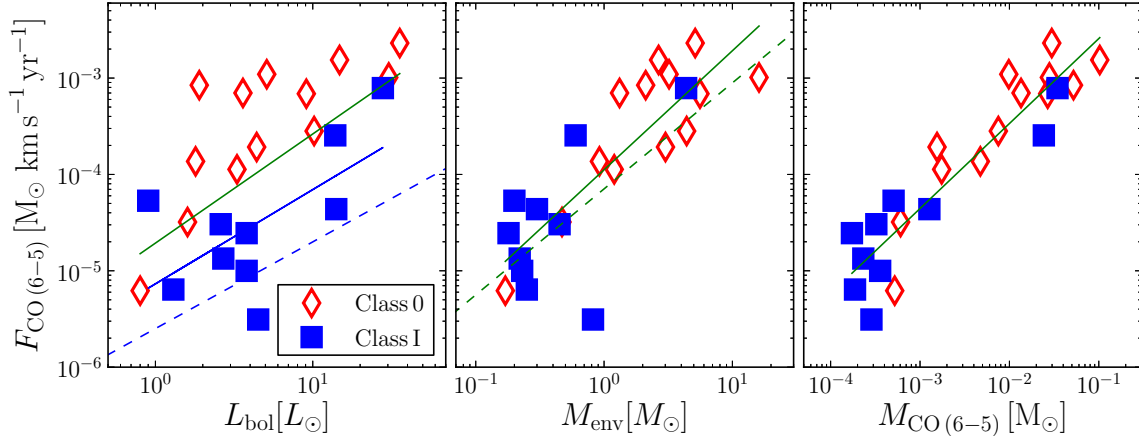


Fig. 8. Correlations of F_{CO} with L_{bol} , M_{env} , and M_{outflow} , where F_{CO} is determined from the CO 6–5 data. Red and blue symbols indicate Class 0 and Class I sources, respectively. The green solid line is the fit to all values and the blue solid line is the fit to the Class I sources alone. Blue and green dashed lines are the best fits from Bontemps et al. (1996).

sources in our sample, the correlations follow the same trend but they are somewhat weaker. In particular, the correlation with L_{bol} is at the $\sim 2.7\sigma$ level, whereas the correlation with M_{env} is 3.1σ . Although the measured values of, e.g., F_{CO} , fill out the same parameter space as when the measurements are done with CO 6–5, the scatter is larger. The scatter remains on the order of one order of magnitude, which is similar to the scatter reported in the literature (e.g., Bontemps et al. 1996), but because of the limited source sample (20 sources with F_{CO} measurements) it is difficult to compare these 3–2 measurements with what is presented in the literature.

3.5. Radiative feedback from UV heating

The quiescent gas is traced by the narrow ($FWHM \lesssim 1 \text{ km s}^{-1}$) ^{13}CO 6–5 emission, which has been mapped over a $1'$ region around the source position. As the contour maps in Figs. A.3 show, the emission is strongly centrally concentrated and does not extend beyond the mapped region except for special cases like NGC 1333 IRAS 4A (Yıldız et al. 2012). The observed emission has two contributions: (i) the dense envelope heated “passively” by the luminosity of the protostar, i.e., the dust in the envelope absorbs all the protostellar luminosity and is heated by it, and this temperature is then transferred to the gas through gas-dust collisions; (ii) the gas heated by UV photons created by protostellar accretion or by shocks in the outflow, and escaping from the immediate protostellar surroundings, for example through outflow cavities, to larger distances. Here the temperature of the gas is higher than that of the dust.

The first component has been modeled by Kristensen et al. (2012) for all our sources and dust temperatures in excess of 10 K are typically found out to between 2.5×10^3 up to 1.5×10^4 AU from the sources. There is evidence that the dust may be further heated on large scales by the UV photons generated by the accreting protostar (Hatchell et al. 2013; Sicilia-Aguilar et al. 2013). We here quantify the second component, which is the gas with temperatures higher than that of the dust, in excess of the passively heated envelope. This second mechanism operates on larger scales and is most relevant to preventing further collapse or fragmentation of the core (Offner et al. 2009, 2010).

To isolate this second component, the method outlined in Yıldız et al. (2012) is used. The ^{13}CO 6–5 envelope emission (component (i)) is modeled using the temperature and density profiles from Kristensen et al. (2012) together with the

C^{18}O constant abundance results provided in Yıldız et al. (2013, Table 5). For the three NGC 1333 sources, drop abundance profiles are used in which CO is frozen out in some part of the envelope; for NGC 1333-IRAS 2A the results from Yıldız et al. (2010) are taken, whereas for NGC 1333-IRAS 4A and NGC 1333-IRAS 4B the models from Yıldız et al. (2012) are adopted. These C^{18}O abundances are then multiplied by the $^{13}\text{C}/^{18}\text{O}$ abundance ratio of 8.5 (Langer & Penzias 1990) and the ^{13}CO emission is computed using the non-LTE excitation line radiative transfer code RATRAN (Hogerheijde & van der Tak 2000). The turbulent width for all the model ^{13}CO spectra is taken as 0.9 km s^{-1} , except for NGC 1333-IRAS 4A and NGC 1333-IRAS 4B where the values from Yıldız et al. (2012) are used. The resulting emission map is convolved with the relevant observing beam.

Figures A.5–A.6 present 7×7 pixel maps ($\sim 30'' \times 30''$; 1 pixel = $4.5''$) around the central position of each source in the ^{12}CO and ^{13}CO 6–5 transitions. The modeled envelope emission (component (i)) is shown as red lines overplotted on the ^{13}CO maps. The right-most panels present the difference between the model envelope emission and the observed emission, which is the UV-heated gas. Two illustrative maps are shown for B335 and L483 mm in Fig. 9.

Most sources show some excess ^{13}CO emission on scales of $5''$ – $10''$ or 1000–2000 AU at the average distance of 200 pc. The only exceptions are L1527 and Oph IRS63. The emission is almost always aligned with one (12/24 sources) or both (4/24 sources) outflow lobes. A few sources show widely distributed ^{13}CO emission (6/24 sources). More Class 0 sources show excess emission along the direction of the outflow (11/13 sources) than Class I’s do (5/11) but this may be a S/N effect.

The typical ^{13}CO 6–5 line width is $\lesssim 1 \text{ km s}^{-1}$, and so the emission is not part of the swept-up outflow gas as illustrated in more detail for the case of NGC 1333-IRAS 4A by Yıldız et al. (2012). The only known mechanism to create this excess narrow emission is by UV photons generated from the protostellar accretion process and subsequently escaping through the outflow cavities (Spaans et al. 1995).

To estimate the effects of the UV radiation on these scales, it is first important to estimate the temperature of the gas compared with that of the dust. Figure A.7 shows model ^{13}CO 3–2/6–5 line ratios for a grid of kinetic temperatures and

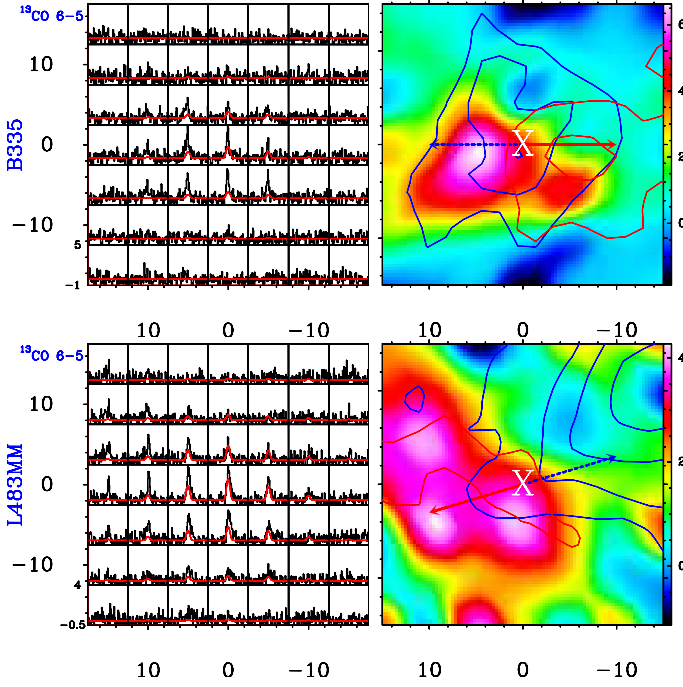


Fig. 9. ^{13}CO spectral maps in black overlaid with the model envelope spectra in red shown on the *left panels*. *Right panels*: color maps of the UV heated gas distribution are shown. These are obtained by subtracting the model envelope emission from the observed spectra on a pixel-by-pixel basis. The sources are B335 (*top*) and L483 mm (*bottom*). The axes show the offsets ($\Delta\alpha$, $\Delta\delta$) in arcsec. The color scale is in units of K km s^{-1} .

densities, with the observed values for each source overplotted at the $7.5''$ radius density. The inferred temperatures are in the range of 30–80 K, consistent with the model predictions from Visser et al. (2012) on spatial scales of a few 1000 AU. For comparison, the typical dust envelope temperature at this distance is ~ 15 –25 K and thus the gas is heated to higher temperatures by more than a factor of 2.

The mass of the UV-heated gas (component (ii)) is calculated on the basis of the residual after subtracting the ^{13}CO model envelope emission (component (i)) from the observed ^{13}CO emission. The mass is then calculated via the residual emission by assuming $T_{\text{ex}} = 50$ K and $\text{CO}/\text{H}_2 = 1.2 \times 10^{-4}$, where the value of T_{ex} is chosen because it is the median value for ^{13}CO as reported in Yıldız et al. (2013) based on transitions from 2–1 up to 10–9. In order to compare UV-heated gas mass to the total outflow gas mass, the outflow mass is recalculated from ^{12}CO 6–5 over the same ($\sim 30'' \times 30''$) area, using $T_{\text{ex}} = 75$ K to be consistent with all other ^{12}CO mass calculations. In Table 5, the masses calculated for the envelope, UV-heated gas and outflow gas are tabulated.

The mass of the UV-heated gas is typically a factor of 10 to 100 times lower than the total envelope mass (Fig. 10a) and a factor of just a few up to 50 compared to the envelope mass within the $30'' \times 30''$ region. There is no correlation with evolution; i.e., the fraction of UV-heated gas compared to the total envelope mass does not change from Class 0 to Class I. Similarly there is no correlation between the mass of the UV-heated gas and the density at 1000 AU (Fig. 10b), which may suggest that the emission is independent of density and thus the emission is thermalized.

Compared with the outflow masses, the UV-heated gas masses (component (ii)) are typically a few times higher, as also

Table 5. Comparison of envelope, photon-heated and outflow masses over the $30 \times 30''$ area surrounding the central protostar.

Source	M_{Envelope}^a Total	M_{Envelope}^b $\leq 15''$	M_{UV}^c ^{13}CO 6–5	M_{outflow}^d ^{12}CO 6–5
L1448 mm	9.0	1.69	4.0×10^{-2}	...
NGC 1333-IRAS 2A	5.13	0.67	9.9×10^{-2}	8.1×10^{-3}
NGC 1333-IRAS 4A	5.59	2.56	8.2×10^{-2}	1.4×10^{-2}
NGC 1333-IRAS 4B	3.01	2.60	5.1×10^{-2}	2.2×10^{-3}
L1527	0.92	0.18	2.3×10^{-2}	$< 5.5 \times 10^{-4}$
Ced110-IRS4	0.17	0.07	2.4×10^{-2}	3.3×10^{-4}
IRAS 15398	0.47	0.28	6.0×10^{-3}	5.5×10^{-4}
L483 mm	4.4	0.25	3.9×10^{-2}	1.5×10^{-3}
Ser-SMM1	16.13	1.99	3.0×10^{-1}	7.4×10^{-3}
Ser-SMM4	2.11	3.17	2.2×10^{-1}	8.9×10^{-3}
Ser-SMM3	3.21	0.74	2.2×10^{-1}	6.1×10^{-3}
L723 mm	1.32	0.67	7.2×10^{-2}	1.9×10^{-3}
B335	1.2	0.79	4.0×10^{-2}	9.8×10^{-4}
L1489	0.18	0.04	1.4×10^{-2}	1.5×10^{-4}
TMR1	0.23	0.04	1.6×10^{-2}	2.3×10^{-4}
TMC1A	0.22	0.04	7.6×10^{-3}	5.3×10^{-5}
TMC1	0.2	0.04	7.7×10^{-3}	3.6×10^{-4}
HH46-IRS	4.36	1.21	2.5×10^{-1}	1.2×10^{-2}
DK Cha	0.82	0.26	2.2×10^{-2}	2.2×10^{-4}
GSS30-IRS1	0.6	0.03	3.1×10^{-1}	2.5×10^{-3}
Elias 29	0.3	0.01	7.8×10^{-2}	5.6×10^{-4}
Oph-IRS63	0.25	0.12	3.0×10^{-3}	$< 1.2 \times 10^{-4}$
RNO91	0.45	0.05	1.1×10^{-2}	1.5×10^{-4}
L1551-IRS5	22.2	0.23	2.0×10^{-2}	...

Notes. All masses are given in M_{\odot} . ^(a) Total mass of the spherical envelope inferred from the continuum radiative-transfer modeling (Kristensen et al. 2012). ^(b) As *a*, but limited to the mass within the $15''$ radius over which the UV-heated component is determined. ^(c) UV photon-heated gas mass (component (ii)) as calculated from the ^{13}CO 6–5 spectra over the mapped area after subtracting the modeled envelope emission. ^(d) Outflow mass calculated from the ^{12}CO 6–5 map for the same area as the ^{13}CO maps. All masses except the total envelope mass (*a*) are obtained over a $\sim 30'' \times 30''$ (Figs. A.5, A.6)

found for NGC 1333-IRAS 4A in Yıldız et al. (2012). They follow a remarkably tight correlation with a Pearson correlation coefficient of 0.86 (3.1σ ; Fig. 10c). Furthermore, the fraction of UV-heated to envelope gas mass is constant as a function of bolometric luminosity at a median value of ~ 0.03 (Fig. 10d). The two outstanding high $M_{\text{UV}}/M_{\text{env}}$ Class I sources are DK Cha and GSS30 IRS1.

Many protostellar envelopes show varying degrees of asymmetry and are not spherical; most striking is the flattened envelope surrounding L1157 (Tobin et al. 2010). This asymmetry naturally introduces systematic uncertainties in the envelope modeling which is then propagated through to the determination of the mass of the UV-heated gas. However, most envelopes are elongated perpendicular to the direction of the outflow (e.g., L1157) whereas the residual ^{13}CO 6–5 emission is typically elongated along the outflow direction. Therefore we do not think that the use of spherical envelope models changes any of the conclusions regarding the effects of the UV-heated gas.

4. Discussion

4.1. Mechanical feedback

Our results show that the outflow parameters inferred from the CO 6–5 data show the same trends with L_{bol} and evolutionary

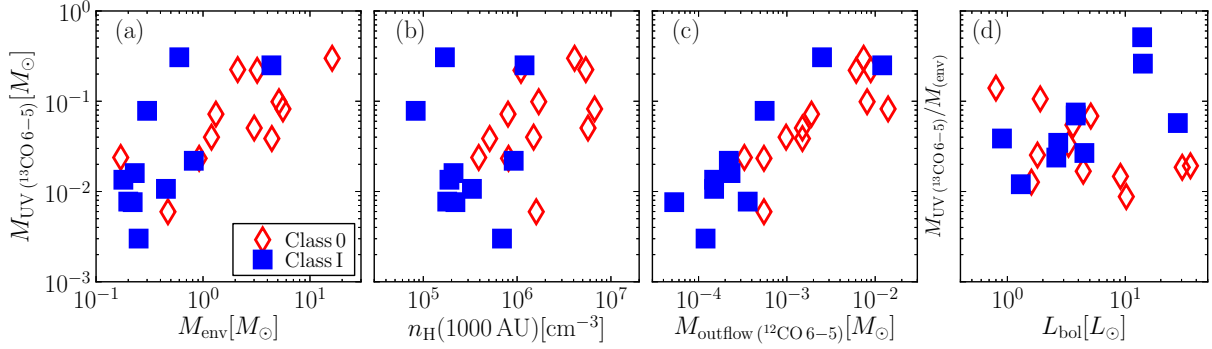


Fig. 10. **a)** UV heated gas mass is shown as a function of envelope mass (M_{env}), **b)** density at 1000 AU ($n_{\text{H}}(1000 \text{ AU})$), and **c)** the outflow mass calculated from the $^{12}\text{CO} 6-5$ lines for the same region ($M_{\text{obs}}(^{12}\text{CO} 6-5)$). **d)** The fraction of the UV heated gas mass over envelope mass as a function of bolometric luminosity (L_{bol}). Figure 10d has the same y -axis values as **a)**–**c)**.

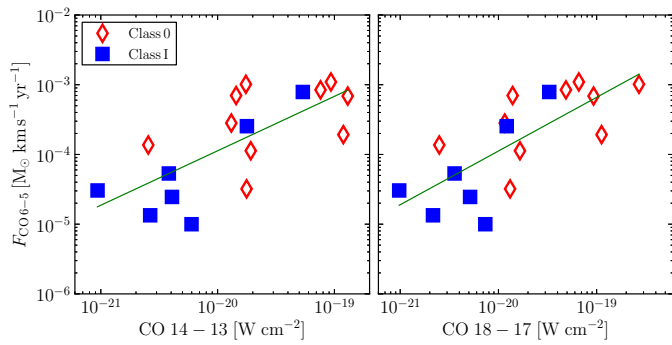


Fig. 11. Correlation between F_{CO} and the CO 14–13 and 18–17 fluxes obtained from *Herschel*-PACS. The integrated intensities are scaled to a common distance of 200 pc. The green lines shows the best-fit power-laws to the data and are simple least-squares fits.

stage as found previously in the literature, but with stronger correlations than for the 3–2 data. Even though the same telescope and methods are used for all sources and the spatial resolution is high, there remains a scatter of at least an order of magnitude in the correlation between F_{CO} and L_{bol} . This could point to the importance of “episodic accretion” as a resolution to the “luminosity problem” (Evans et al. 2009; Dunham et al. 2010, 2013). Some Class 0 sources are very luminous, which is likely due to a current rapid burst in accretion which may happen every 10^3 – 10^4 yr (Dunham et al. 2010). However, their location in the high state is not constant and would drop in the course of time, on timescales as fast as 10^2 yr (Johnstone et al. 2013). The envelope mass, on the other hand, is independent of the current luminosity, and the stronger correlation of F_{CO} with M_{env} may simply reflect that more mass is swept up.

Since the outflow force gives the integrated activity over the entire lifetime of a YSO, it is also interesting to compare this parameter with the currently shocked gas probed by the *Herschel*-PACS high- J CO observations ($J_{\text{up}} > 14$). In Fig. 11, F_{CO} is plotted against CO 14–13 and CO 18–17 fluxes ($E_{\text{up}} \sim 580$ and 940 K) obtained from Karska et al. (2013), Goicoechea et al. (2012), Herczeg et al. (2012), Green et al. (2013) and van Kempen et al. (2010a). There is a strong correlation with the CO 14–13 and CO 18–17 fluxes with F_{CO} ($r = \sim 0.76$ – $\sim 3.1\sigma$; Fig. 11). This correlation illustrates that although CO 18–17 likely traces a different outflow component than CO 6–5, a component closer to the shock front (Santangelo et al. 2012; Nisini et al. 2013; Tafalla et al. 2013), the underlying driving mechanism is the same. Furthermore, CO 18–17 emission is often

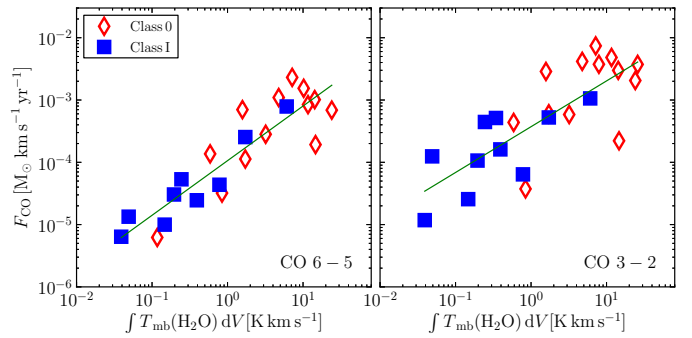


Fig. 12. Correlation between F_{CO} measured from the CO 6–5 (left) and CO 3–2 (right) data and the integrated intensity of the ground-state $\text{H}_2\text{O} 1_{10}$ – 1_{01} transition at 557 GHz. The integrated intensities are scaled to a common distance of 200 pc (Kristensen et al. 2012). The correlation is strong for CO 6–5, $r = 0.90$ with 4.1σ . The green lines shows the best-fit power-laws to the data and are simple least-squares fits.

extended along the outflow direction (Karska et al. 2013) and clearly traces, spatially, a component related to that traced by CO 6–5. Although the excitation of CO 18–17 requires higher densities and temperatures ($n_{\text{crit}} \sim 10^6 \text{ cm}^{-3}$; $E_{\text{up}} \sim 940 \text{ K}$) than CO 6–5 ($n_{\text{crit}} \sim 10^5 \text{ cm}^{-3}$; $E_{\text{up}} \sim 120 \text{ K}$), CO 6–5 likely follows in the wake of the shocks traced by the higher- J lines and therefore the excitation of both lines ultimately depend on the actual shock conditions. Testing this scenario requires velocity-resolved line profiles of high- J lines such as CO 16–15 (Kristensen et al., in prep.).

Another indication that the outflow force as measured from CO 6–5 is more closely linked to the currently shocked gas than that from 3–2 comes from comparing H_2O and F_{CO} . Water is one of the best shock tracers, as shown most recently by several *Herschel* observations (van Kempen et al. 2010b; Lefloch et al. 2010; Kristensen et al. 2010; Nisini et al. 2010; Vasta et al. 2012; Tafalla et al. 2013). Kristensen et al. (2012) compared the integrated intensity of the $\text{H}_2\text{O} 1_{10}$ – 1_{01} transition at 557 GHz with the outflow forces presented in the literature. These observed line intensities are scaled by the square of the source distance to a common distance of $d_{\text{avg}} = 200 \text{ pc}$. The literature values of the outflow force used in that paper were calculated using a variety of methods and data sets, and provided an inhomogeneous sample. No correlation of H_2O integrated intensity with F_{CO} was found. Revisiting this comparison with the newly measured outflow forces in a consistent way reveals a correlation with the force measured from CO 3–2 data ($r = 0.78$;

3.6σ) and a stronger correlation with the force measured from the CO 6–5 data ($r = 0.90$; 4.1σ , Fig. 12; see also Bjerkeli et al. 2012). Thus, F_{CO} as deduced from 6–5 can be used as a measure of the outflow force of the shocked gas, rather than just the entrained, swept-up gas.

4.2. Radiative feedback

The observational data demonstrate that ^{13}CO 6–5 traces UV-heated gas, and that the UV-heated gas is predominantly found along the same direction as the outflow. The A_V is lower inside the outflow cavity, because the density is lower, and so UV radiation from the accretion can escape more easily along this direction (Spaans et al. 1995; Bruderer et al. 2009; Visser et al. 2012). If there are also external UV sources, the UV-heated gas could have a more isotropic component as well but this is not traced by our ^{13}CO 6–5 data at the current S/N level except for the case of two sources in Ophiuchus, Elias 29 and GSS30 IRS1. Narrow ^{12}CO lines may be used instead at positions well away from the outflow cone, as illustrated by previous observations (van Kempen et al. 2009b).

The estimated gas temperature of the UV-heated gas of 30–50 K is likely a lower limit to the maximum temperature achieved by this process. Model calculations by Spaans et al. (1995) and Visser et al. (2012) show that the gas temperatures can reach values up to a few hundred K at 1000 AU radius in a narrow layer along the outflow cavity, depending on source characteristics. Gas temperatures >30 K are maintained out to 10^4 AU radius. Thus, in clustered environments such as NGC 1333 or Ophiuchus, it is unlikely that the gas temperature ever drops down to 10 K because the protostars heat the gas radiatively. Gas and dust temperatures are clearly decoupled, with dust temperatures significantly lower than the gas temperature, by about a factor of 2. Thus, estimates of the radiative feedback based on dust observations alone (Hatchell et al. 2013; Sicilia-Aguilar et al. 2013) likely underestimate both the temperature and the extent of the feedback. Indeed, the continuum emission, as observed with e.g. SCUBA at 450 and 850 μm , typically does not show extended structure along the direction of the outflows.

The tight correlation between the mass of the UV-heated gas and the outflow mass, when measured over the same area, is puzzling. Naively, one would expect the two properties to be unrelated as they are caused by two different physical mechanisms, UV excitation and outflow entrainment. However, the cause of these two physical processes is linked, accretion and ejection (e.g. Bontemps et al. 1996; Frank et al. 2014). The UV photons are generated in the accretion shocks onto the protostar, and during this accretion process part of the material is ejected. Thus, higher-luminosity sources at a given envelope mass should show higher UV luminosities. It is not possible to verify this hypothesis directly as all of these sources are deeply embedded. A second component is required to efficiently UV-heat the surrounding gas: an outflow cavity needs to be cleared out for the radiation to escape which requires the outflow to have been active for at least one dynamic time-scale. Thus, there may be good reason to expect a correlation between the masses of the UV-heated and outflowing gas, when measured over the same area.

5. Conclusions

In this paper, we present large-scale maps of 26 YSOs obtained with the APEX-CHAMP⁺ instrument (^{12}CO and

^{13}CO 6–5), together with the JCMT-HARP-B instrument (^{12}CO and ^{13}CO 3–2). Our sample consists of deeply embedded Class 0 sources as well as less deeply embedded Class I sources. With these high spatial and spectral resolution maps, we have studied the outflow activity of these two different evolutionary stages of YSOs in a consistent manner. All embedded sources show large-scale outflow activity that can be traced by the CO line wings, however their activity is reduced over the course of evolution to the later evolutionary stages as indicated by the decrease of several outflow parameters, including the spatial extent of the outflow as seen in the ^{12}CO 6–5 maps.

One of the crucial parameters, the outflow force, F_{CO} is quantified and correlations with other physical parameters are sought. In agreement with previous studies, Class 0 sources have higher outflow forces than Class I sources. F_{CO} is directly proportional to M_{env} and M_{outflow} , showing that higher outflow forces are associated with higher envelope mass and outflow mass, as present in Class 0 sources. Comparing the outflow force as measured from CO 6–5 data to H_2O observed with *Herschel*-HIFI and high- J CO observed with *Herschel*-PACS reveals a correlation, suggesting that the outflow force from 6–5 is related to current shock activity. This is in contrast with the outflow force measured from CO 3–2, where the correlation with water and the high- J CO fluxes is weaker.

The quiescent gas is traced by narrow ($\text{FWHM} \sim 1 \text{ km s}^{-1}$) ^{13}CO 6–5 emission. For this purpose, maps are obtained in ^{13}CO 6–5 transition for the sources $\sim 1'$ region around the source position. Envelope emission is modeled via radiative transfer models and is subtracted from the observed ^{13}CO 6–5 emission. It is shown that an excess emission exists in most sources on scales of a 1000–2000 AU and this emission is caused by UV photons generated from the protostellar accretion process and subsequently escaping through the outflow cavities. The fraction of the UV-heated gas compared to the total envelope mass does not change from Class 0 to Class I and there are no clear signs of evolutionary trends.

UV heating is prominent along the outflow direction and this is a general observable trend. This directional preference suggests that the UV feedback on large scales is most important in the same regions as the outflows. The UV heating observed in ^{13}CO 6–5 is important on scales of $<10^4$ AU, i.e., not on cluster scales. Future models of core and disk fragmentation should take these effects into account.

Acknowledgements. The authors would like to thank the anonymous referee for suggestions and comments, which improved this paper. We are grateful to the APEX and JCMT staff for support with these observations. Astrochemistry in Leiden is supported by the Netherlands Research School for Astronomy (NOVA), by a Spinoza grant and grant 614.001.008 from the Netherlands Organisation for Scientific Research (NWO), and by the European Community's Seventh Framework Programme FP7/2007-2013 under grant agreement 238258 (LASSIE). This work was carried out in part at the Jet Propulsion Laboratory, which is operated by the California Institute of Technology under contract with NASA. Construction of CHAMP⁺ is a collaboration between the Max-Planck-Institut für Radioastronomie Bonn, Germany; SRON Netherlands Institute for Space Research, Groningen, the Netherlands; the Netherlands Research School for Astronomy (NOVA); and the Kavli Institute of Nanoscience at Delft University of Technology, The Netherlands; with support from The Netherlands Organization for Scientific Research (NWO) grant 600.063.310.10. The APEX data was obtained via Max Planck Institute observing time.

References

- André, P., Ward-Thompson, D., & Barsony, M. 2000, *Protostars & Planets IV*, 59
- Arce, H. G., & Sargent, A. I. 2006, *ApJ*, 646, 1070
- Arce, H. G., Shepherd, D., Gueth, F., et al. 2007, *Protostars and Planets V*, 245

- Bachiller, R., & Tafalla, M. 1999, in *NATO ASIC Proc. 540: The Origin of Stars and Planetary Systems*, eds. C. J. Lada, & N. D. Kylafis, 227
- Bachiller, R., Martin-Pintado, J., Tafalla, M., Cernicharo, J., & Lazareff, B. 1990, *A&A*, **231**, 174
- Benedettini, M., Busquet, G., Lefloch, B., et al. 2012, *A&A*, **539**, L3
- Bjerkeli, P., Liseau, R., Larsson, B., et al. 2012, *A&A*, **546**, A29
- Blake, G. A., Sandell, G., van Dishoeck, E. F., et al. 1995, *ApJ*, **441**, 689
- Bontemps, S., André, P., Terebey, S., & Cabrit, S. 1996, *A&A*, **311**, 858
- Bourke, T. L., Garay, G., Lehtinen, K. K., et al. 1997, *ApJ*, **476**, 781
- Brown, D. W., & Chandler, C. J. 1999, *MNRAS*, **303**, 855
- Bruderer, S., Benz, A. O., Doty, S. D., van Dishoeck, E. F., & Bourke, T. L. 2009, *ApJ*, **700**, 872
- Buckle, J. V., Hills, R. E., Smith, H., et al. 2009, *MNRAS*, **399**, 1026
- Cabrit, S., & Bertout, C. 1990, *ApJ*, **348**, 530
- Cabrit, S., & Bertout, C. 1992, *A&A*, **261**, 274
- Codella, C., Maury, A. J., Gueth, F., et al. 2014, *A&A*, **563**, L3
- Curtis, E. I., Richer, J. S., Swift, J. J., & Williams, J. P. 2010, *MNRAS*, **408**, 1516
- Downes, T. P., & Cabrit, S. 2007, *A&A*, **471**, 873
- Dunham, M. M., Evans, II, N. J., Terebey, S., Dullemond, C. P., & Young, C. H. 2010, *ApJ*, **710**, 470
- Dunham, M. M., Arce, H. G., Allen, L. E., et al. 2013, *AJ*, **145**, 94
- Dunham, M. M., Arce, H. G., Mardones, D., et al. 2014, *ApJ*, **783**, 29
- Enoch, M. L., Evans, II, N. J., Sargent, A. I., & Glenn, J. 2009, *ApJ*, **692**, 973
- Evans, N. J., Dunham, M. M., Jørgensen, J. K., et al. 2009, *ApJS*, **181**, 321
- Frank, A., Ray, T. P., Cabrit, S., et al. 2014, in *Protostars and Planets VI*, eds. H. Beuther et al. (University of Arizona Press), 451
- Geers, V. C., van Dishoeck, E. F., Pontoppidan, K. M., et al. 2009, *A&A*, **495**, 837
- Goicoechea, J. R., Cernicharo, J., Karska, A., et al. 2012, *A&A*, **548**, A77
- Goldsmith, P. F., Snell, R. L., Hemeon-Heyer, M., & Langer, W. D. 1984, *ApJ*, **286**, 599
- Green, J. D., Evans, II, N. J., Jørgensen, J. K., et al. 2013, *ApJ*, **770**, 123
- Greene, T. P., Wilking, B. A., André, P., Young, E. T., & Lada, C. J. 1994, *ApJ*, **434**, 614
- Gueth, F., Guilloteau, S., & Bachiller, R. 1996, *A&A*, **307**, 891
- Güsten, R., Baryshev, A., Bell, A., et al. 2008, in *SPIE Conf. Ser.*, **7020**
- Hansen, C. E., Klein, R. I., McKee, C. F., & Fisher, R. T. 2012, *ApJ*, **747**, 22
- Hatchell, J., Fuller, G. A., & Richer, J. S. 2007, *A&A*, **472**, 187
- Hatchell, J., Wilson, T., Drabek, E., et al. 2013, *MNRAS*, **429**, L10
- Herczeg, G. J., Karska, A., Bruderer, S., et al. 2012, *A&A*, **540**, A84
- Hogerheijde, M. R., & van der Tak, F. F. S. 2000, *A&A*, **362**, 697
- Hogerheijde, M. R., van Dishoeck, E. F., Blake, G. A., & van Langevelde, H. J. 1997, *ApJ*, **489**, 293
- Hogerheijde, M. R., van Dishoeck, E. F., Blake, G. A., & van Langevelde, H. J. 1998, *ApJ*, **502**, 315
- Johnstone, D., Hendricks, B., Herczeg, G. J., & Bruderer, S. 2013, *ApJ*, **765**, 133
- Jørgensen, J. K., Schöier, F. L., & van Dishoeck, E. F. 2002, *A&A*, **389**, 908
- Jørgensen, J. K., Schöier, F. L., & van Dishoeck, E. F. 2004, *A&A*, **416**, 603
- Karska, A., Herczeg, G. J., van Dishoeck, E. F., et al. 2013, *A&A*, **552**, A141
- Kasemann, C., Güsten, R., Heyminck, S., et al. 2006, in *SPIE Conf. Ser.*, **6275**
- Kauffmann, J., Bertoldi, F., Bourke, T. L., Evans, II, N. J., & Lee, C. W. 2008, *A&A*, **487**, 993
- Kenyon, S. J., Hartmann, L. W., Strom, K. M., & Strom, S. E. 1990, *AJ*, **99**, 869
- Klein, B., Philipp, S. D., Krämer, I., et al. 2006, *A&A*, **454**, L29
- Kristensen, L. E., Visser, R., van Dishoeck, E. F., et al. 2010, *A&A*, **521**, L30
- Kristensen, L. E., van Dishoeck, E. F., Bergin, E. A., et al. 2012, *A&A*, **542**, A8
- Lada, C. J. 1987, in *Star Forming Regions*, eds. M. Peimbert, & J. Jugaku, *IAU Symp.*, **115**, 1
- Langer, W. D., & Penzias, A. A. 1990, *ApJ*, **357**, 477
- Lee, C.-F., Mundy, L. G., Reipurth, B., Ostriker, E. C., & Stone, J. M. 2000, *ApJ*, **542**, 925
- Lee, C.-F., Mundy, L. G., Stone, J. M., & Ostriker, E. C. 2002, *ApJ*, **576**, 294
- Lefloch, B., Cabrit, S., Codella, C., et al. 2010, *A&A*, **518**, L113
- Lommen, D., Jørgensen, J. K., van Dishoeck, E. F., & Crapsi, A. 2008, *A&A*, **481**, 141
- Manoj, P., Watson, D. M., Neufeld, D. A., et al. 2013, *ApJ*, **763**, 83
- Micono, M., Davis, C. J., Ray, T. P., Eisloffel, J., & Shetrone, M. D. 1998, *ApJ*, **494**, L227
- Nisini, B., Benedettini, M., Codella, C., et al. 2010, *A&A*, **518**, L120
- Nisini, B., Santangelo, G., Antonucci, S., et al. 2013, *A&A*, **549**, A16
- Offner, S. S. R., Klein, R. I., McKee, C. F., & Krumholz, M. R. 2009, *ApJ*, **703**, 131
- Offner, S. S. R., Kratter, K. M., Matzner, C. D., Krumholz, M. R., & Klein, R. I. 2010, *ApJ*, **725**, 1485
- Oya, Y., Sakai, N., Sakai, T., et al. 2014, *ApJ*, **795**, 152
- Parise, B., Belloche, A., Leurini, S., et al. 2006, *A&A*, **454**, L79
- Pilbratt, G. L., Riedinger, J. R., Passvogel, T., et al. 2010, *A&A*, **518**, L1
- Robitaille, T. P., Whitney, B. A., Indebetouw, R., Wood, K., & Denzmore, P. 2006, *ApJS*, **167**, 256
- Santangelo, G., Nisini, B., Giannini, T., et al. 2012, *A&A*, **538**, A45
- Santangelo, G., Nisini, B., Antonucci, S., et al. 2013, *A&A*, **557**, A22
- Saraceno, P., Andre, P., Ceccarelli, C., Griffin, M., & Molinari, S. 1996, *A&A*, **309**, 827
- Sicilia-Aguilar, A., Henning, T., Linz, H., et al. 2013, *A&A*, **551**, A34
- Snell, R. L., Loren, R. B., & Plambeck, R. L. 1980, *ApJ*, **239**, L17
- Spaans, M., Hogerheijde, M. R., Mundy, L. G., & van Dishoeck, E. F. 1995, *ApJ*, **455**, L167
- Tafalla, M., Myers, P. C., Mardones, D., & Bachiller, R. 2000, *A&A*, **359**, 967
- Tafalla, M., Liseau, R., Nisini, B., et al. 2013, *A&A*, **551**, A116
- Tobin, J. J., Hartmann, L., Calvet, N., & D'Alessio, P. 2008, *ApJ*, **679**, 1364
- Tobin, J. J., Hartmann, L., Looney, L. W., & Chiang, H.-F. 2010, *ApJ*, **712**, 1010
- van der Marel, N., Kristensen, L. E., Visser, R., et al. 2013, *A&A*, **556**, A76
- van Dishoeck, E. F., Kristensen, L. E., Benz, A. O., et al. 2011, *PASP*, **123**, 138
- van Kempen, T. A., Green, J. D., Evans, N. J., et al. 2010a, *A&A*, **518**, L128
- van Kempen, T. A., Kristensen, L. E., Herczeg, G. J., et al. 2010b, *A&A*, **518**, L121
- van Kempen, T. A., van Dishoeck, E. F., Güsten, R., et al. 2009a, *A&A*, **507**, 1425
- van Kempen, T. A., van Dishoeck, E. F., Güsten, R., et al. 2009b, *A&A*, **501**, 633
- van Kempen, T. A., van Dishoeck, E. F., Hogerheijde, M. R., & Güsten, R. 2009c, *A&A*, **508**, 259
- Vasta, M., Codella, C., Lorenzani, A., et al. 2012, *A&A*, **537**, A98
- Visser, R., Kristensen, L. E., Bruderer, S., et al. 2012, *A&A*, **537**, A55
- Yıldız, U. A., van Dishoeck, E. F., Kristensen, L. E., et al. 2010, *A&A*, **521**, L40
- Yıldız, U. A., Kristensen, L. E., van Dishoeck, E. F., et al. 2012, *A&A*, **542**, A86
- Yıldız, U. A., Kristensen, L. E., van Dishoeck, E. F., et al. 2013, *A&A*, **556**, A89

Appendix A: Additional material

Table A.1. Integration limits and contour levels.

Source	Blue lobe ^a				Red lobe ^a			CO 6–5		CO 3–2	
	v_{LSR} [km s ⁻¹]	V_{max} [km s ⁻¹]	$V_{\text{out,blue}}$ [km s ⁻¹]	$V_{\text{in,blue}}$ [km s ⁻¹]	V_{max} [km s ⁻¹]	$V_{\text{in,red}}$ [km s ⁻¹]	$V_{\text{out,red}}$ [km s ⁻¹]	Lowest Cntr ^b [K km s ⁻¹]	Step size ^b [K km s ⁻¹]	Lowest Cntr ^b [K km s ⁻¹]	Step size ^b [K km s ⁻¹]
L1448 mm	+5.2	50.6	-45.4	2.0	28.8	6.6	34.0	10	10
NGC 1333-IRAS 2A	+7.7	23.2	-15.5	7.0	17.3	10.5	25.0	25	20	15	15
NGC 1333-IRAS 4A	+7.0	22.0	-15.5	7.0	19.8	9.2	27.0	20	20	20	20
NGC 1333-IRAS 4B	+7.1	20.0	-12.8	4.0	12.8	9.2	20.0	20	20	20	20
L1527	+5.9	7.4	-1.5	4.5	8.1	7.0	14.0	7	4	5	3
Ced110-IRS4 ^c	+4.2	4.2	0.0	3.5	3.8	5.5	8.0	8	5	5	3
BHR71 ^c	-4.4	15.5	-20.0	-6.0	22.4	-3.9	18.0	20	20
IRAS 15398	+5.1	8.6	-3.5	4.0	9.9	6.5	15.0	5	5	3	3
L483MM	+5.2	10.7	-5.5	3.5	10.8	6.0	16.0	8	8	5	8
Ser-SMM1	+8.5	19.0	-10.5	6.0	22.5	10.5	31.0	15	20	30	25
Ser-SMM4	+8.0	19.0	-10.5	6.0	11.5	10.5	20.0	15	20	30	25
Ser-SMM3	+7.6	22.0	-13.5	6.0	13.5	10.5	22.0	15	20	30	25
L723MM	+11.2	14.2	-3.0	9.0	10.8	12.0	26.0	15	10	5	5
B335	+8.4	8.9	-0.5	7.0	8.6	9.5	17.0	5	5
L1157	+2.6	12.4	-9.8	1.5	17.4	3.7	20.0	10	20
L1489	+7.2	13.7	-6.5	5.0	7.8	8.5	15.0	3	2	10	10
L1551-IRSS	+6.2	9.7	-3.5	4.5	11.8	7.5	18.0	10	10
TMR1	+6.3	7.8	-1.5	4.0	3.7	6.5	10.0	3	3	2	2
TMC1A	+6.6	17.1	-10.5	5.0	5.4	6.5	10.0	5	5	2	5
TMC1	+5.2	13.7	-8.5	4.0	14.8	6.2	20.0	4	5	3	3
HH46-IRS	+5.2	5.5	-0.3	10.0	14.8	12.2	20.0	20	20	10	10
DK Cha ^c	+3.1	5.3	-2.2	1.5	8.9	4.3	12.0	5	5	5	5
GSS30-IRS1	+3.5	13.0	-9.5	1.5	14.5	5.5	18.0	20	30	15	15
Elias 29	+4.3	9.8	-5.5	1.5	10.7	7.0	15.0	15	10	7.5	5.0
Oph-IRS63	+2.8	11.3	-8.5	1.0	3.2	4.0	6.0	3	1.5	2	1
RNO91	+0.5	15.0	-14.5	-1.0	3.5	1.0	4.0	3	3	3	3

Notes. Velocities are not corrected for inclination; v_{LSR} values are from [Yıldız et al. \(2013\)](#). ^(a) Velocity integration limits as shown in Fig. A.1. ^(b) Contour levels are given in absolute intensities. ^(c) Obtained from ¹²CO 6–5.

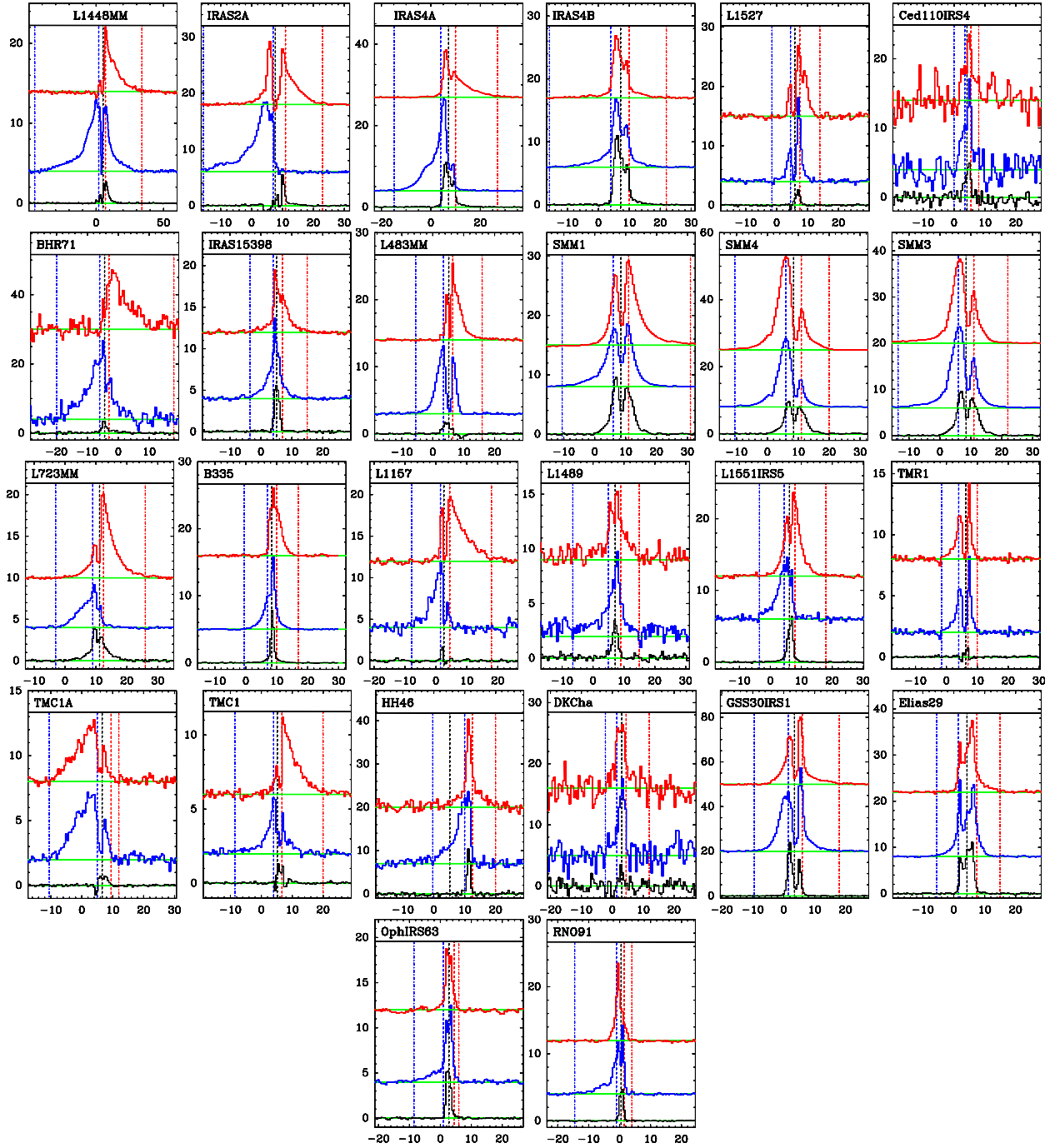


Fig. A.1. CO 3–2 spectra with selected integration limits indicated, except for Ced110 IRS4, BHR71, and DK Cha where CO 6–5 was used. Each panel presents these limits for each source. The black spectrum at the *bottom* is taken from a clean position representative for the envelope emission. The blue spectrum at the *middle* is the representative spectrum from the blue outflow lobe, and red spectrum at the *top* is the representative spectrum from the red outflow lobe. Each panel shows five vertical lines, these are V_{LSR} (black dashed line), $V_{\text{out,blue}}$ (dot-dash blue line), $V_{\text{in,blue}}$ (dashed blue line), $V_{\text{in,red}}$ (dashed red line), and $V_{\text{out,red}}$ (dot-dash red line).

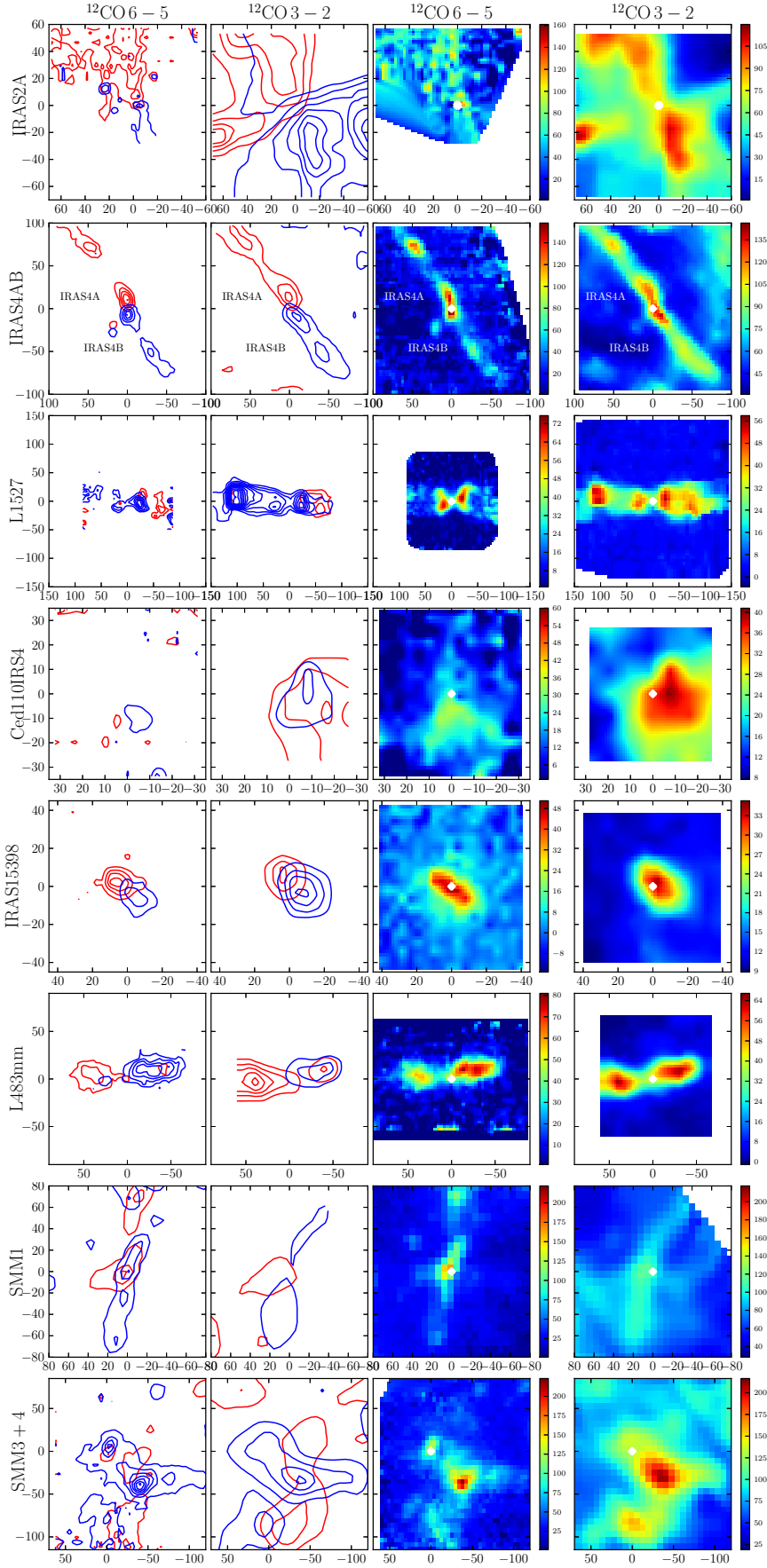


Fig. A.2. Each row contains contour and integrated intensity maps (in K km s^{-1}) of sources in ^{12}CO 6–5 and 3–2. The contour levels and integration limits are given in Table A.1 and integration limits shown in Fig. A.1. The color images show all emission integrated from $V_{\text{out,red}}$ to $V_{\text{out,blue}}$, including any minor cloud contribution.

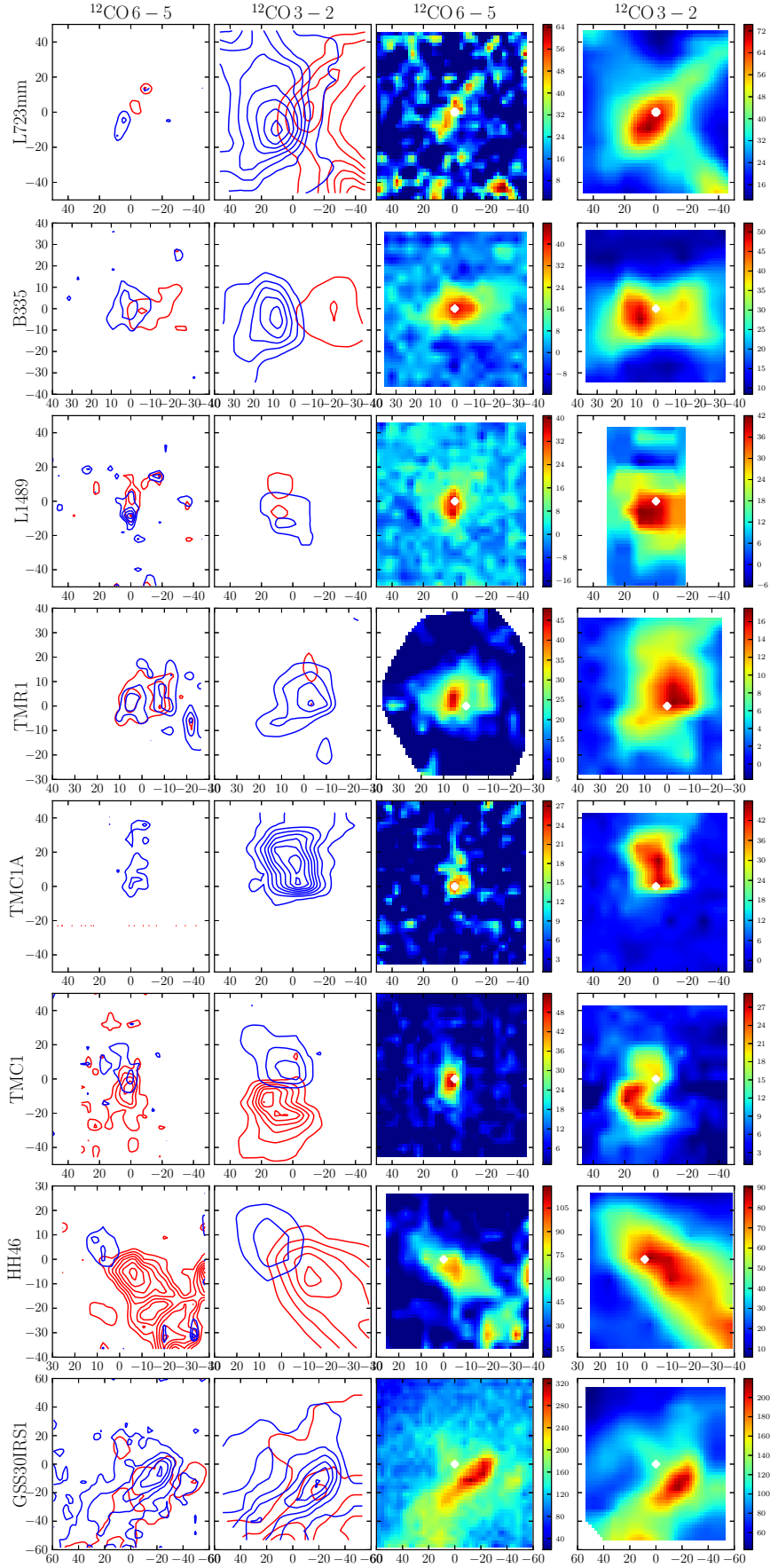


Fig. A.2. continued.

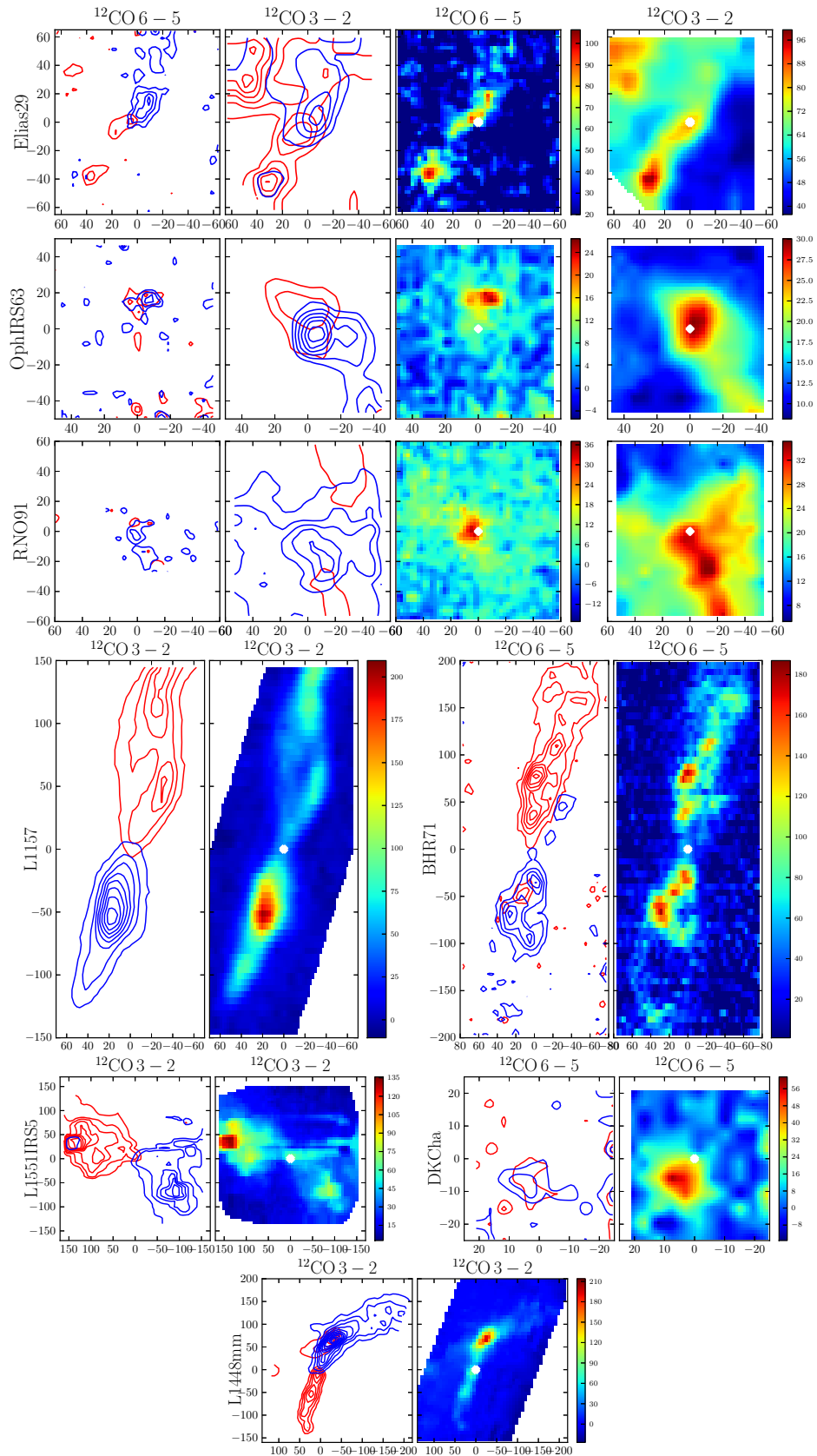


Fig. A.2. continued.

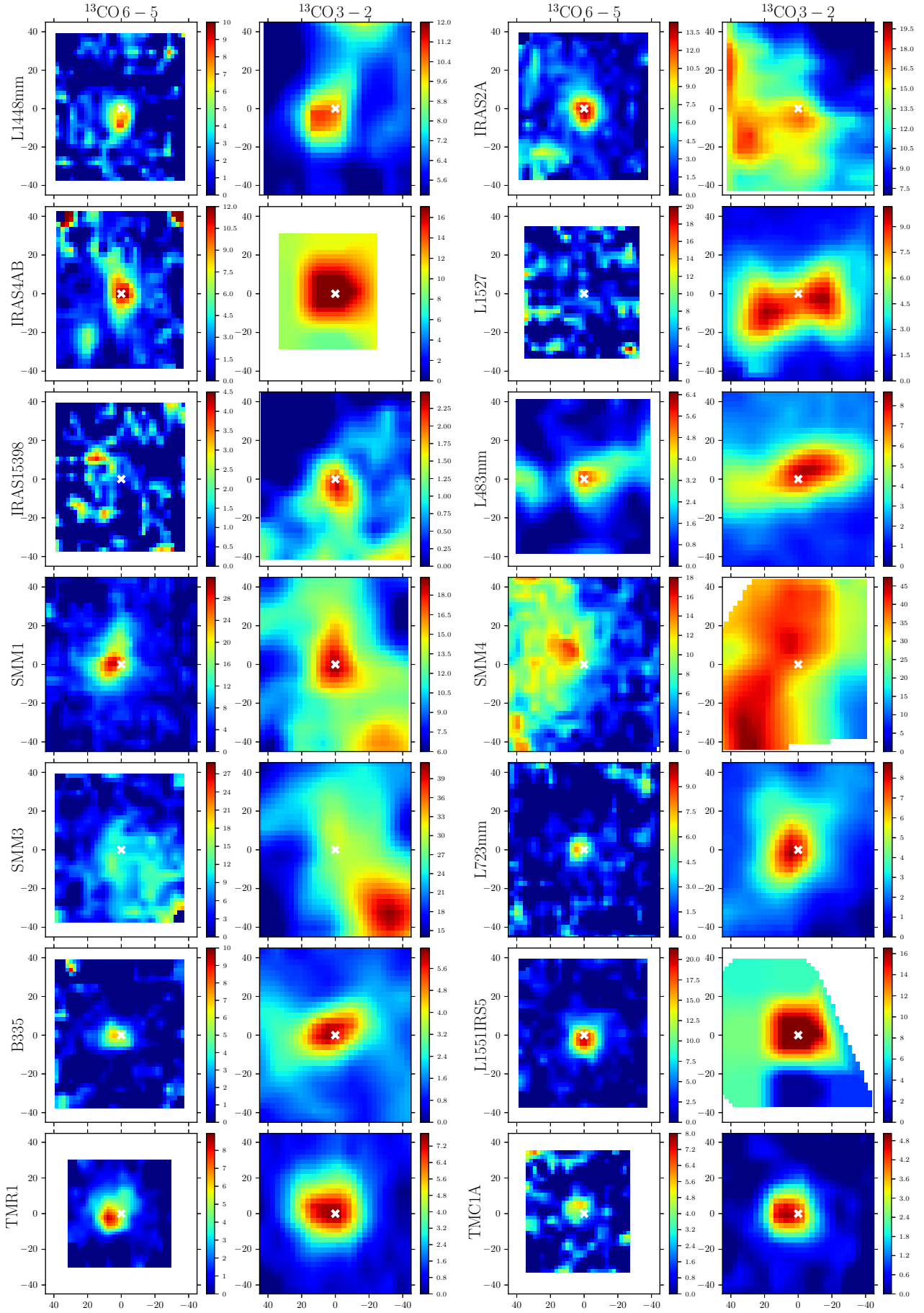


Fig. A.3. $^{13}\text{CO } 6-5$ and $3-2$ integrated intensity maps of the sources (in K km s^{-1}).

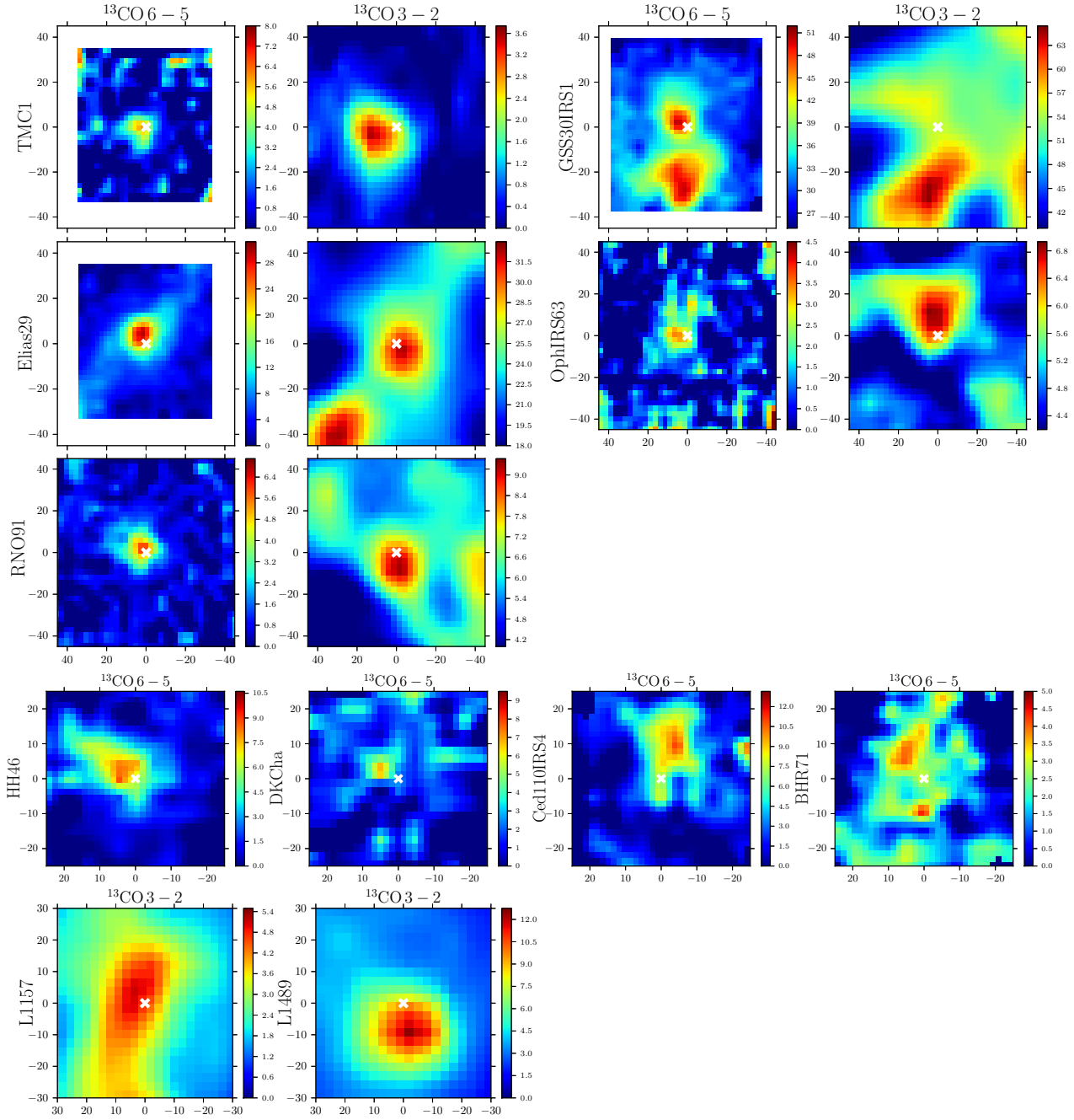


Fig. A.3. continued.

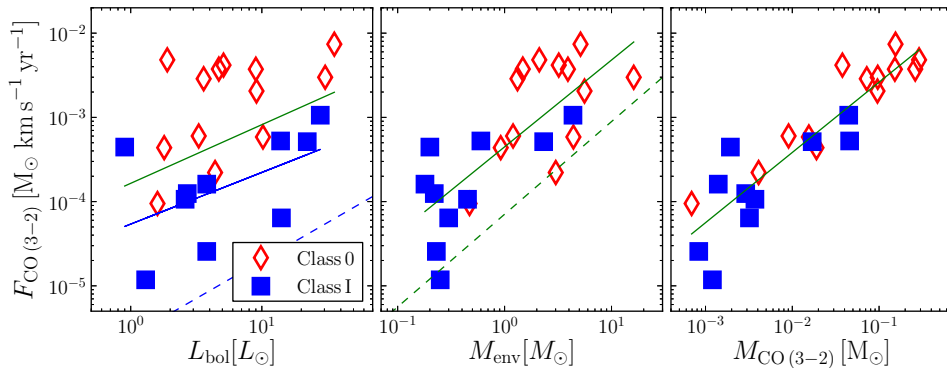


Fig. A.4. Correlations between F_{CO} as measured from CO 3–2 and bolometric luminosity, envelope mass and outflow mass as determined from CO 3–2.

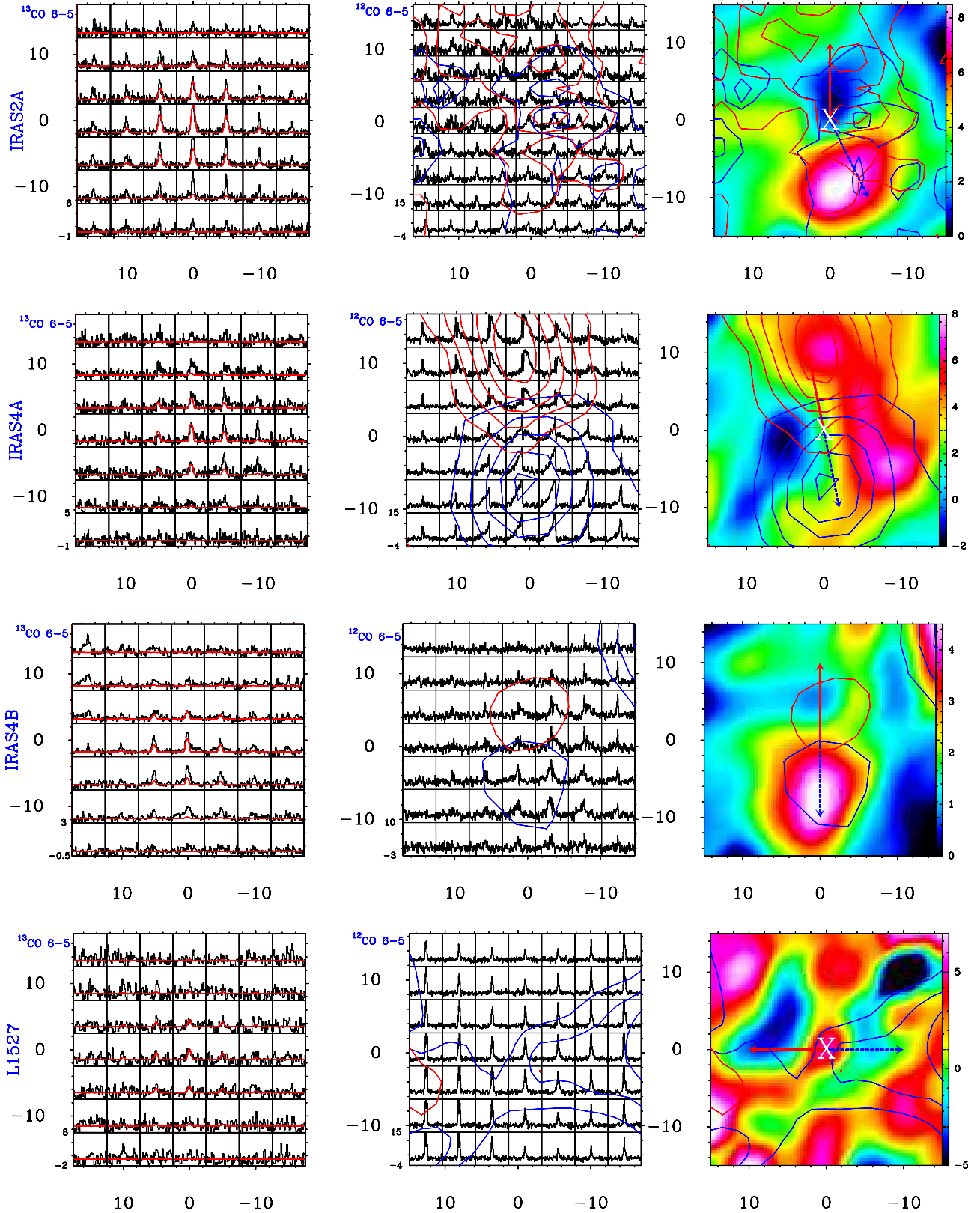


Fig. A.5. 7×7 pixel fully sampled maps are extracted toward the central positions of the sources in ^{13}CO 6–5 (left) and in ^{12}CO 6–5 (middle) transitions. The axes represent the equatorial offsets ($\Delta\alpha$, $\Delta\delta$) in arcsec. The main beam temperature intensity scale of each box are shown in the y -axes of the bottom-left box in Kelvins. The velocity range in each box is $\pm 8 \text{ km s}^{-1}$ for the ^{13}CO spectra, and $\pm 25 \text{ km s}^{-1}$ for the ^{12}CO spectra. The red lines in the left-hand panels are the ^{13}CO 6–5 model line intensities for the passively heated envelope. The excess emission in the observations compared with these model profiles corresponds to the UV-heated gas and is shown as an image in the right panel with the intensity scale in K km s^{-1} . The middle and right panels contain the red and blue outflow lobes with the contour levels given in Table A.1. The blue and red arrows in the right-hand panels show the direction of the outflow lobes.

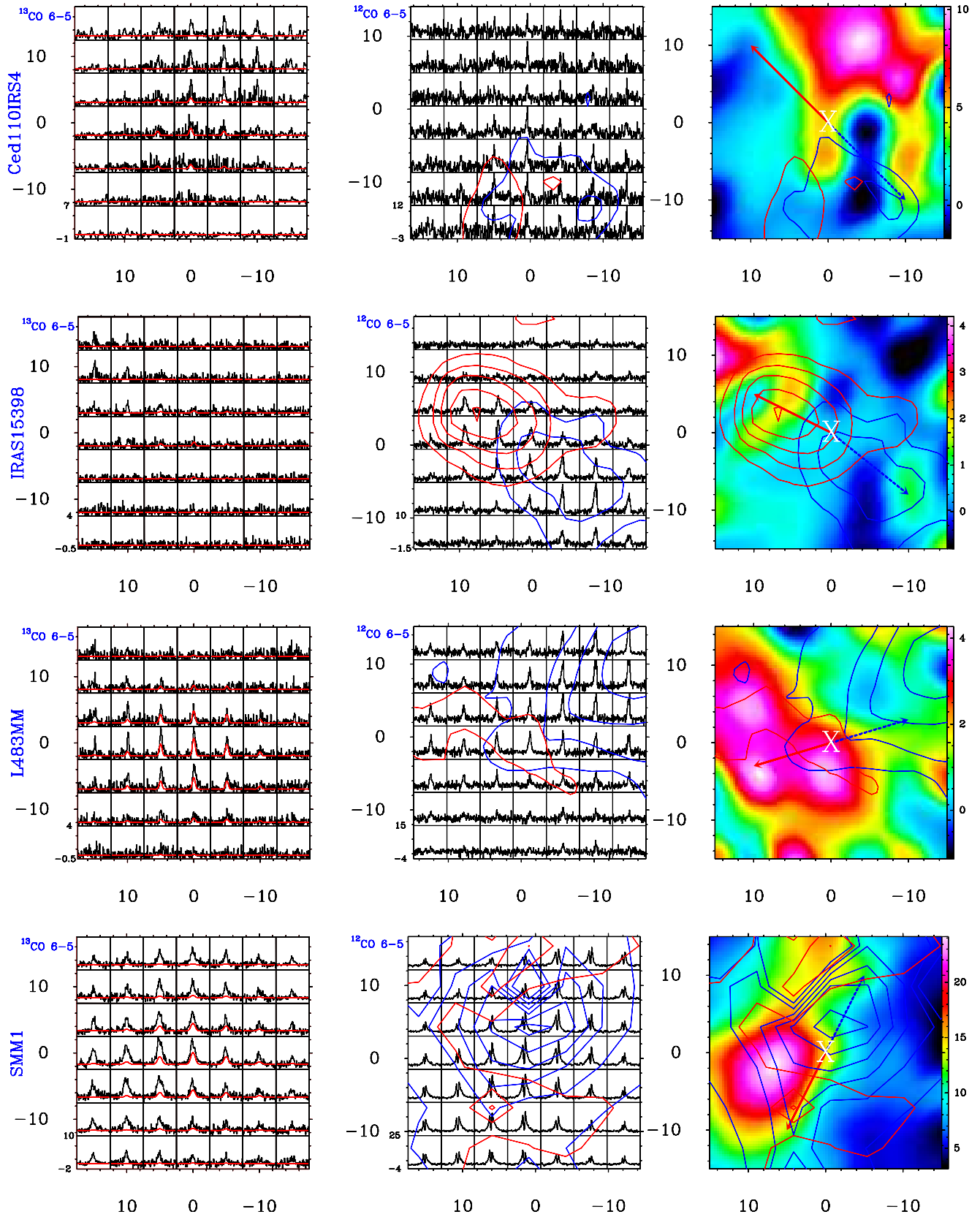


Fig. A.5. continued.

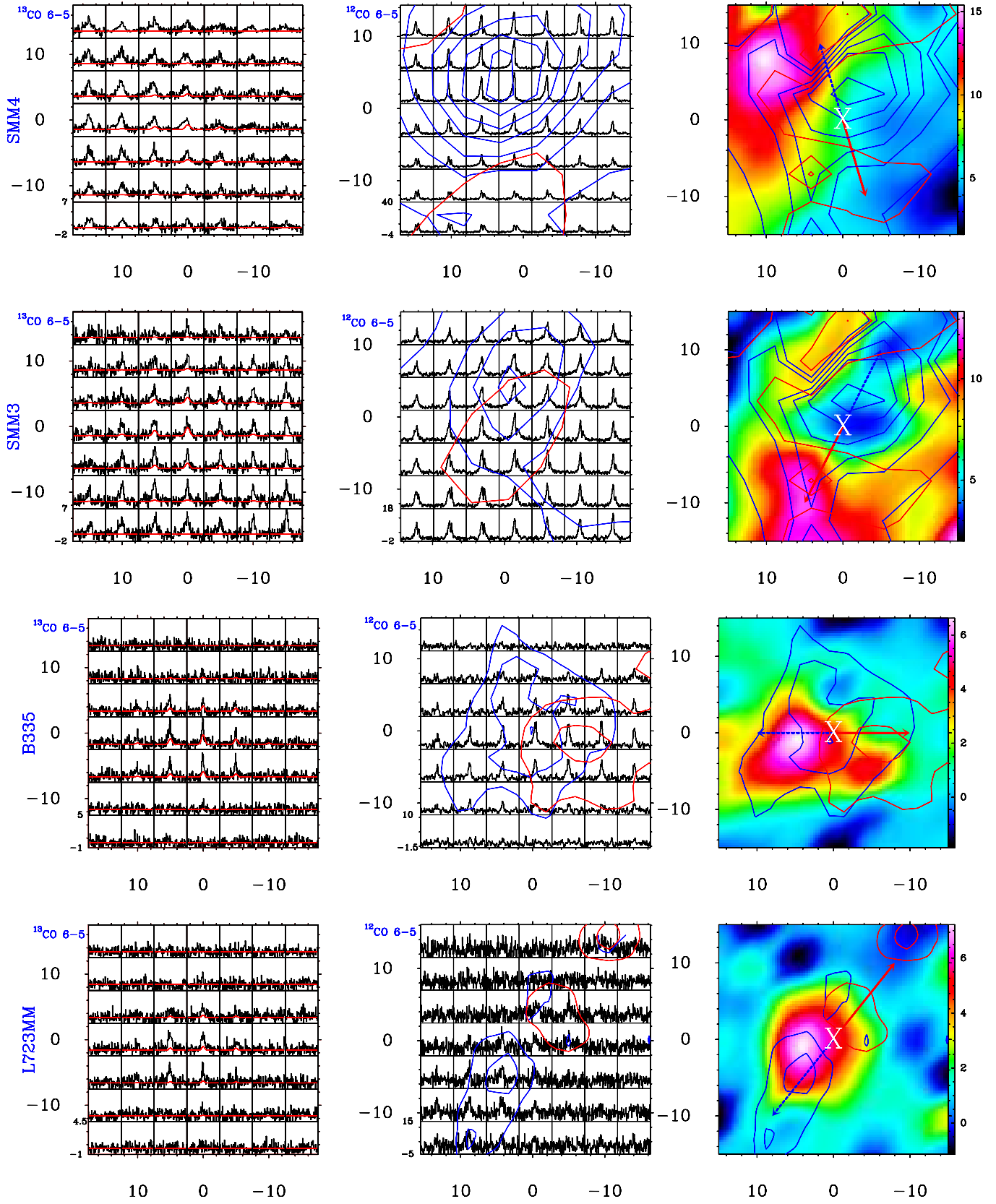


Fig. A.5. continued.

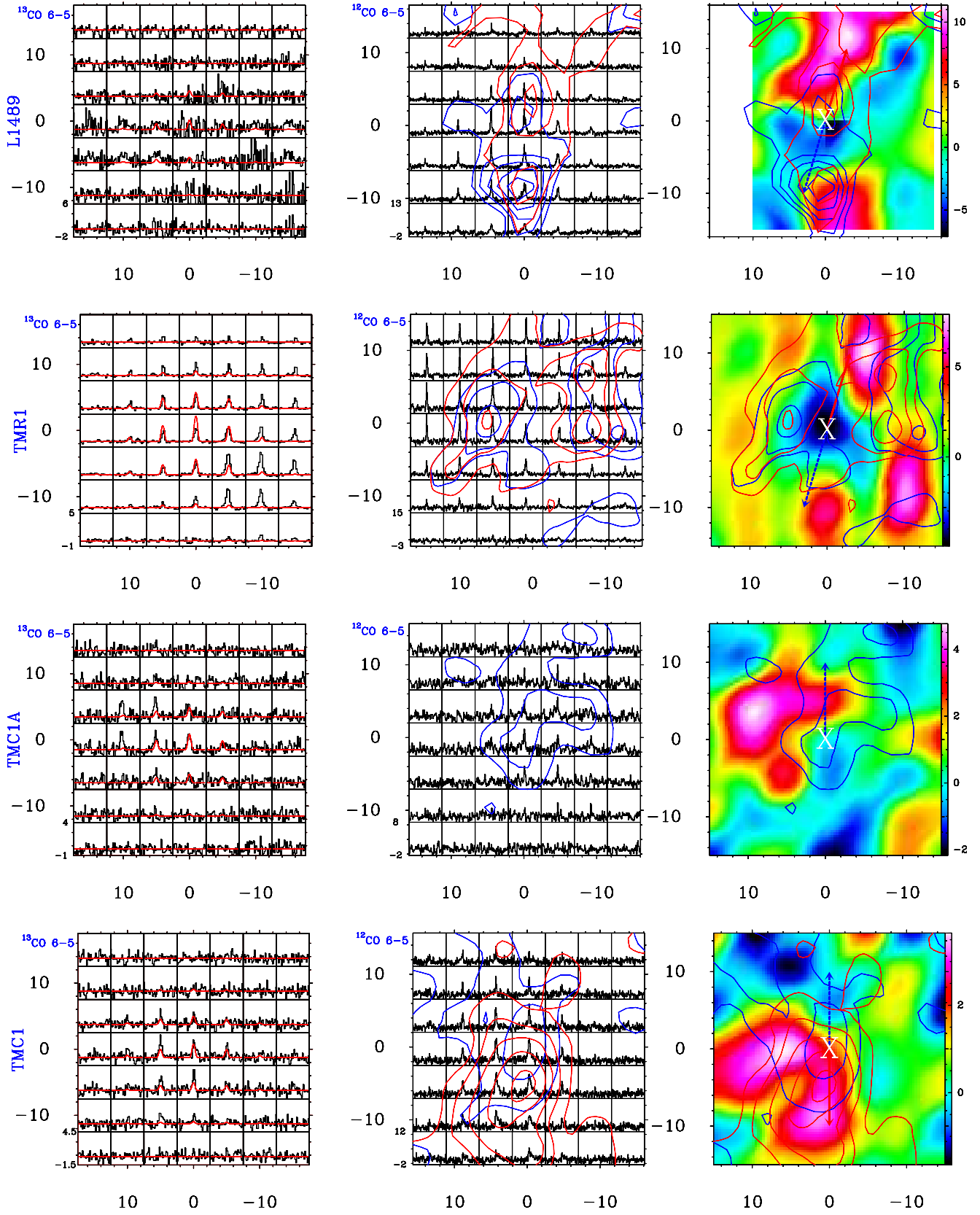


Fig. A.5. continued.

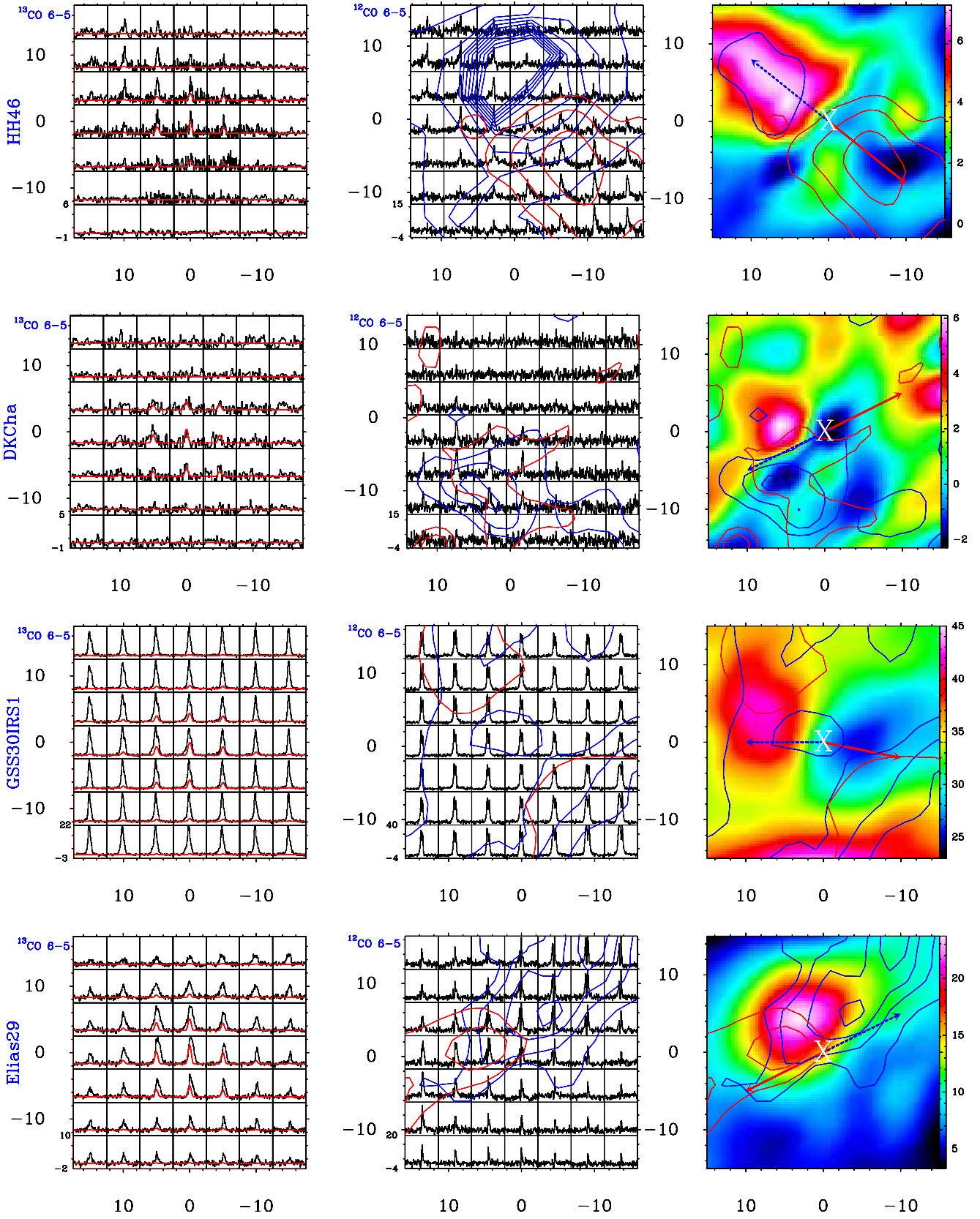


Fig. A.5. continued.

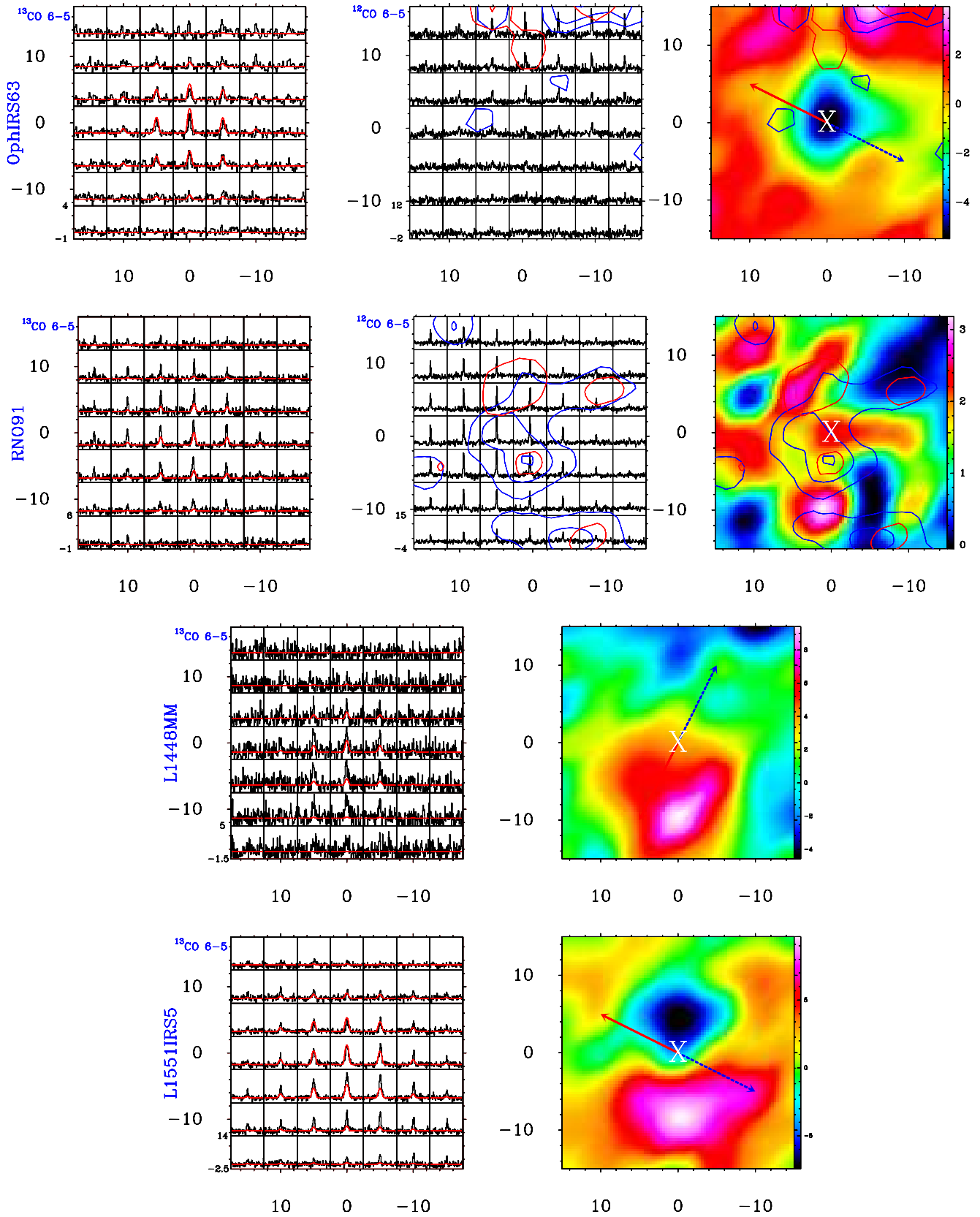


Fig. A.6. Same as Fig. A.5. $^{12}\text{CO } 6-5$ transitions were not observed for L1448MM and L1551 IRS5 in our observing campaign, therefore left blank.

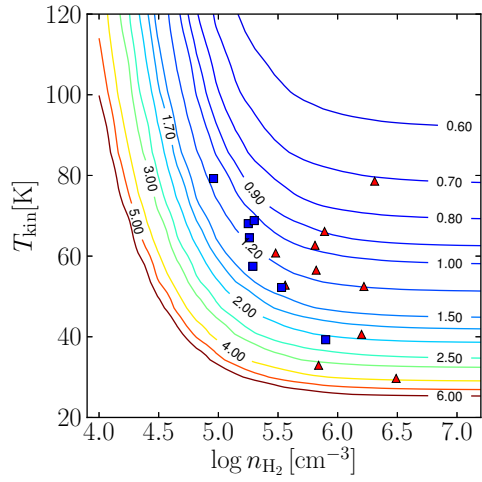


Fig. A.7. ^{13}CO 3–2/6–5 intensity ratio as a function of density and gas temperature calculated via RADEX for $N(^{13}\text{CO}) = 1.5 \times 10^{14} \text{ cm}^{-2}$. Red markers indicate the observed intensity ratios for the central pixels for Class 0 sources whereas blue markers are for Class I sources. Both pixels are taken to be $15''$ diameter. The corresponding densities are the values at the $7.5''$ radius found in the power-law envelope models of Kristensen et al. (2012).