



Universiteit
Leiden
The Netherlands

Results of the GREAT08 Challenge: an image analysis competition for cosmological lensing

Bridle, Sarah; Balan Sreekumar, T.; Bethge, Matthias; Gentile, Marc; Harmeling, Stefan; Heymans, Catherine; ... ; Wittman, David

Citation

Bridle, S., Balan Sreekumar, T., Bethge, M., Gentile, M., Harmeling, S., Heymans, C., ... Wittman, D. (2010). Results of the GREAT08 Challenge: an image analysis competition for cosmological lensing. *Monthly Notices Of The Royal Astronomical Society*, 405(3), 2044-2061. doi:10.1111/j.1365-2966.2010.16598.x

Version: Accepted Manuscript
License: [Leiden University Non-exclusive license](#)
Downloaded from: <https://hdl.handle.net/1887/137030>

Note: To cite this publication please use the final published version (if applicable).

Results of the GREAT08 Challenge^{*}: An image analysis competition for cosmological lensing

Sarah Bridle¹†, Sreekumar T. Balan², Matthias Bethge³, Marc Gentile⁴, Stefan Harmeling³, Catherine Heymans⁵, Michael Hirsch³, Reshad Hosseini³, Mike Jarvis⁶, Donnacha Kirk¹, Thomas Kitching⁵, Konrad Kuijken⁷, Antony Lewis⁸, Stephane Paulin-Henriksson⁹, Bernhard Schölkopf³, Malin Velander⁷, Lisa Voigt¹, Dugan Witherick¹, Adam Amara¹⁰, Gary Bernstein⁶, Frédéric Courbin⁴, Mandeep Gill¹¹, Alan Heavens⁵, Rachel Mandelbaum¹², Richard Massey⁵, Baback Moghaddam^{13,14}, Anais Rassat⁹, Alexandre Réfrégier⁹, Jason Rhodes^{13,14}, Tim Schrabback⁷, John Shawe-Taylor¹, Marina Shmakova¹⁵, Ludovic van Waerbeke¹⁶, David Wittman¹⁷

¹Department of Physics and Astronomy, University College London, Gower Street, London, WC1E 6BT, UK.

²Cavendish Astrophysics, University of Cambridge, JJ Thomson Avenue, Cambridge CB3 0HE, UK.

³MPI for Biological Cybernetics, Dept. of Empirical Inference, Spemannstrasse 38, 72076 Tübingen, Germany.

⁴Ecole Polytechnique Fédérale de Lausanne (EPFL), Observatoire de Sauverny, 1290 Versoix, Switzerland.

⁵Institute for Astronomy, University of Edinburgh, Royal Observatory, Blackford Hill, Edinburgh, EH9 3HJ, UK.

⁶Department of Physics and Astronomy, University of Pennsylvania, Philadelphia, PA 19104, USA.

⁷Leiden Observatory, P.O. Box 9513, NL-2300 RA, Leiden, The Netherlands.

⁸Institute of Astronomy and Kavli Institute for Cosmology, Madingley Road, Cambridge, CB3 0HA, UK

⁹Service d'Astrophysique, CEA Saclay, F-91191 Gif sur Yvette, France.

¹⁰Department of Physics, ETH Zürich, Wolfgang-Pauli-Strasse 16, CH-8093 Zürich, Switzerland.

¹¹Department of Astronomy, Ohio State University, 140 W. 18th Avenue, Columbus, OH 43210, USA.

¹²Institute for Advanced Study, Einstein Drive, Princeton, NJ 08540, USA.

¹³Jet Propulsion Laboratory, California Institute of Technology, 3800 Oak Grove Drive, Pasadena, A 91109, USA.

¹⁴California Institute of Technology, Pasadena, CA 91125, USA.

¹⁵Stanford Linear Accelerator Center, Stanford University, P.O. Box 4349, CA 94309, USA.

¹⁶University of British Columbia, 6224 Agricultural Rd., Vancouver, BC, V6T 1Z1, Canada.

¹⁷Department of Physics, University of California at Davis, One Shields Avenue, Davis, CA 95616, USA.

1 November 2018

ABSTRACT

We present the results of the GREAT08 Challenge, a blind analysis challenge to infer weak gravitational lensing shear distortions from images. The primary goal was to stimulate new ideas by presenting the problem to researchers outside the shear measurement community. Six GREAT08 Team methods were presented at the launch of the Challenge and five additional groups submitted results during the 6 month competition. Participants analyzed 30 million simulated galaxies with a range in signal to noise ratio, point-spread function ellipticity, galaxy size, and galaxy type. The large quantity of simulations allowed shear measurement methods to be assessed at a level of accuracy suitable for currently planned future cosmic shear observations for the first time. Different methods perform well in different parts of simulation parameter space and come close to the target level of accuracy in several of these. A number of fresh ideas have emerged as a result of the Challenge including a re-examination of the process of combining information from different galaxies, which reduces the dependence on realistic galaxy modelling. The image simulations will become increasingly sophisticated in future GREAT challenges, meanwhile the GREAT08 simulations remain as a benchmark for additional developments in shear measurement algorithms.

Key words: cosmology: observations - gravitational lensing - large-scale structure

^{*} <http://www.great08challenge.info>

† E-mail: sarah.bridle@ucl.ac.uk

1 INTRODUCTION

A clump of matter induces a curvature in space-time which causes the trajectory of a light ray to appear bent. This effect, known as gravitational lensing, is analogous to light passing through a sheet of glass of varying thickness such as a bathroom window. In both cases the light-emitting objects appear distorted. Making assumptions about the intrinsic (original) shapes of the emitting objects allows us to infer information about the intervening material. In cosmology we learn about the distribution of matter by studying the shapes of distant galaxies. In the vast majority of cases the distortion varies very little as a function of position on the galaxy image, and it can be approximated by a matrix distortion. This regime is known as weak gravitational lensing, or cosmic shear when applied to large numbers of randomly selected distant galaxies.

Gravitational attraction of ordinary matter and dark matter is expected to slow the expansion of the universe, causing the expansion to decelerate. However, multiple lines of evidence now show that the present day expansion of the Universe seems instead to be accelerating. The main explanations explored in the literature are that (i) Einstein's cosmological constant is non-zero, (ii) the vacuum energy is small but non-negligible, (iii) the Universe is filled with some new fluid, dubbed dark energy, or (iv) the laws of General Relativity are wrong at large distances. Possibilities (i) and (ii) can be subsumed within item (iii) because they look like a dark energy fluid with equation of state $p = w\rho c^2$ where $w = -1$. To find out more about the nature of dark energy or modifications to the law of gravity we need high precision measurements of the recent ($z < 1$) Universe.

By studying cosmic shear using galaxies at a range of different epochs we can learn how the dark matter clumps as a function of time, which itself depends on the nature of dark energy and the laws of gravity. Cosmic shear appears to hold the most potential of all methods for investigating the dark energy or modifications to gravity (Albrecht et al. 2006; Peacock et al. 2006; Albrecht & Bernstein 2007; Albrecht et al., Albrecht et al.). There are many current, planned and proposed surveys to use cosmic shear to measure dark energy including the Canada-France Hawaii Telescope Legacy Survey (CFHTLS)¹, the Kilo-Degree Survey (KIDS), Panoramic Survey Telescope and Rapid Response System (Pan-STARRS)², the Dark Energy Survey (DES)³, the Large Synoptic Survey Telescope (LSST)⁴, and space missions Euclid⁵ and the Joint Dark Energy Mission (JDEM)⁶.

Cosmic shear was first detected just one decade ago (Bacon et al. 2000; Kaiser et al. 2000; van Waerbeke et al. 2000; Wittman et al. 2000) and many studies have now used it to measure cosmological parameters. Much work has also been carried out on anticipating any problems that may limit the potential of cosmic shear over the coming decade. These are thought to be (i) accu-

racy of approximate methods for obtaining distances to galaxies; (ii) intrinsic alignments of galaxies; (iii) accuracy of numerical predictions of dark matter clustering on small scales and in the presence of baryons; and (iv) unbiased measurement of shear from galaxy images. There is now much discussion about obtaining high quality galaxy distances using spectroscopic redshifts to calibrate approximate methods to solve (i) (Ma et al. 2005; Huterer et al. 2006a; Kitching et al. 2008; Bernstein & Ma 2008; Bernstein & Huterer 2009). The intrinsic alignment signal (ii) can be removed if (i) can be solved perfectly (Takada & White 2004; Joachimi & Schneider 2008) and otherwise the two are closely linked (King & Schneider 2003; Heymans & Heavens 2003; King 2005; Bridle & King 2007; Zhang 2008; Bernstein 2009; Joachimi & Schneider 2009). Supercomputers are being deployed to produce higher accuracy predictions, and methods for suppressing information from the uncertain small-scale regime have been developed. In this paper we focus on the final problem, shear measurement from noisy images. It can be phrased entirely as a statistics problem of extracting information from images.

In 2004 the Shear TEsting Programme (STEP) was launched to assess the current status of shear measurement methods. It began with a blind challenge set by and for the weak lensing community (Heymans et al. 2006, hereafter STEP1). A large volume of images containing a mixture of stars and simple galaxies were produced. The participants had the task of extracting the (constant) input shear from the images, and these estimates were compared to the true input value. These end-to-end simulations showed that the shear measurement problem is far from trivial but that the methods in frequent use at that time were sufficiently accurate for the existing published cosmic shear measurements. Massey et al. (2007) (hereafter STEP2) extended this work with more sophisticated galaxy models, and built statistical devices into larger simulations to improve the measurement precision. This showed that, even considering realistic and more complex galaxy morphologies, existing methods were still sufficient for the current data.

The cosmic shear community then began to look ahead to the coming decade of surveys and ask whether the existing methods are sufficiently accurate even when the statistical uncertainties are reduced by the massive increase in data quantity. Addressing this question requires much larger blind challenges, containing at least tens of millions of galaxies. At the same time it was recognised that the shear estimation problem can be phrased as a statistics problem and that experts in image analysis from other disciplines may be in a position to contribute significantly to developing new approaches. Furthermore, it was decided that the strengths and weaknesses of different methods could be best assessed with slightly simpler simulations, in which various effects could be isolated.

The previous two published blind shear analysis challenges (STEP1, STEP2) were slightly simplified relative to real data in that the shear and the PSF did not vary across an image. However, they did ask participants to grapple with a number of difficult issues.

- The images had relatively realistic PSFs with classical optical aberrations such as coma and trefoil.
- Although the PSF did not vary across an image, participants were asked not to use this fact.

¹ <http://www.cfht.hawaii.edu/Science/CFHTLS/>

² <http://pan-starrs.ifa.hawaii.edu>

³ <http://www.darkenergysurvey.org>

⁴ <http://www.lsst.org>

⁵ <http://sci.esa.int/euclid>

⁶ <http://jdem.gsfc.nasa.gov>

- STEP1 required participants to determine which objects were stars and therefore could be used for a PSF determination.
- Both challenges required participants to run object detection software to determine where the star and galaxies were. Spuriously detected objects could and did affect the shear.
- Galaxies were drawn from a range of magnitudes, so that weighting schemes as a function of the Signal-to-Noise Ratio (SNR) were important.
- Galaxies were randomly placed, so that sometimes they overlapped. Participants were responsible for either deblending or rejecting these galaxies.

The GREAT08 Challenge removes *all* of these issues to focus on the core problem of inferring shear given a PSF and standardised set of non-overlapping galaxies at (approximately) known positions. The motivation is that once this problem is solved, the other issues will be introduced in further challenges of increasing complexity.

The Gravitational LENSing Accuracy Testing 2008 (GREAT08) Challenge Handbook (Bridle et al. 2009, hereafter The GREAT08 Handbook) describes the shear measurement problem for non-cosmologists and sets out the challenge. GREAT08 was launched in October 2008 and ran as a blind competition for 6 months until the end of April 2009. This paper describes the results of GREAT08. Section 2 describes the GREAT08 simulations. We review the shear measurement problem and shear accuracy requirements in Section 3. Section 4 summarises current shear measurement methods and Section 5 presents the Challenge results. We conclude and overview the potential for future GREAT Challenges in Section 6. We provide extra details of the simulations, methods and results in appendices.

2 THE GREAT08 SIMULATIONS

The GREAT08 images are provided in sets of 10,000 objects in a single FITS file. Each object is generated on its own grid of 39×39 pixels and these postage stamps are patched together for convenience in a 100×100 layout, with a 1 pixel border, thus each set is a patchwork image of 4000×4000 pixels. Each galaxy postage stamp is generated using the following sequence: (i) simulate a galaxy model; (ii) convolve it with a kernel, referred to as the point-spread function (PSF); (iii) bin up the light in pixels; and (iv) apply the noise model. The PSFs used are given in Appendix A1. Each postage stamp is produced using a list of parameters specifying the individual object and simulation properties. We describe the catalogues of these properties in Appendix A2. The method used to produce images from the catalogues is overviewed below and described in more detail in Appendix A3. Example images are shown in Fig. 1.

Four different groups of galaxy images were provided in GREAT08: (i) low noise galaxy images for which the true shears were provided during the Challenge, labelled LowNoise_Known; (ii) low noise galaxy images for which there was a blind challenge to extract the true shears, labelled LowNoise_Blind; (iii) realistic noise galaxy images for which the true shears were provided, labelled RealNoise_Known; and (iv) realistic noise galaxy images with blind shear values, RealNoise_Blind. This RealNoise_Blind group formed the main GREAT08 Chal-

Table 1. Parameters for the LowNoise_Known simulations. R_{gp}/R_p is the ratio of PSF convolved galaxy Full Width at Half Maximum (FWHM) to the PSF FWHM. ‘b or d’ describes the fact that 50% of the galaxies in each set have de Vaucouleurs profiles (bulge only) and 50% have exponential profiles (disk only). The parameters for LowNoise_Blind are the same except the galaxies are a mix of the two components as described in the text. The parameters for RealNoise_Known are the same as for LowNoise_Known except the SNR is 20.

	Fiducial	Lower value	Upper value
SNR	200	N/A	N/A
R_{gp}/R_p	1.4	1.22	1.6
PSF type	Fid	N/A	N/A
Galaxy type	b or d	N/A	N/A

Table 2. Parameters for the RealNoise_Blind simulations. The PSF models and other parameters are defined in detail in Appendices A1 and A2.

	Fiducial	Lower value	Upper value
SNR	20	10	40
R_{gp}/R_p	1.4	1.22	1.6
PSF type	Fid	Fid rotated	Fid $e \times 2$
Galaxy type	b+d	b or d	b+d offcenter

lenge. These are described in more detail in the GREAT08 Handbook, together with the rules governing which information could be used to inform the blind challenges.

The parameters for each set in LowNoise_Known were determined using the upper panel of Fig. 2 and Table 1. There are 15 sets (FITS images) each containing 10,000 galaxies. There are 5 sets with each of 3 different galaxy size values. The method for setting the galaxy sizes and SNR values is described in Appendices A2 and A3.

The parameters for each set in RealNoise_Blind were determined using the lower panel of Fig. 2 and Table 2. There is a range in SNR, galaxy size, PSF ellipticity and galaxy type. One branch of the RealNoise_Blind holds all parameters at their fiducial values. Each of the 4 variable parameters has a ‘lower’ and an ‘upper’ value relative to the fiducial. When each of these values is used all other parameters are fixed at the fiducial values. This makes 9 different branches in total. In each branch there are 6 realisations of each of 50 different shear values, making 2700 sets with 10,000 galaxies in each.

Images are generated by sampling from the galaxy light distribution, sampling from the PSF, adding the sample positions to simulate convolution, binning the samples onto a pixel grid, and then applying the noise model. The exact numerical techniques used are detailed in Appendix A3. In brief, samples are first generated from the circular galaxy profile. Next, they are stretched to have the required ellipticity and then sheared. Samples are then drawn from the circular PSF distribution and made elliptical using the shear distortion equations given in Appendix A3. Each galaxy sample is added to a PSF sample to simulate convolution, and finally the samples are binned into pixels.

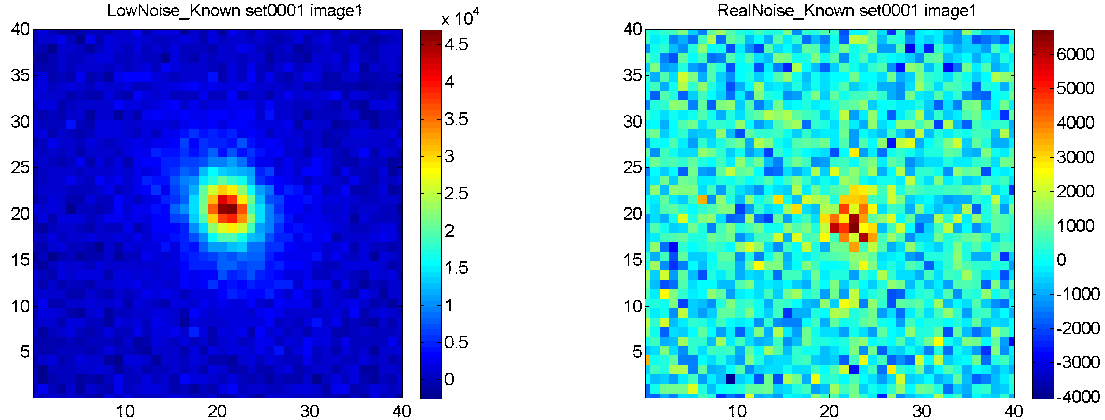


Figure 1. Left: The first galaxy of the first LowNoise_Known FITS image. Right: The first galaxy of the first RealNoise_Known FITS image. The signal is a factor of ten smaller for the RealNoise images than the LowNoise images, making the problem much more challenging.

3 FIGURE OF MERIT

The shear measurement problem was summarised for non-cosmologists in the GREAT08 Handbook. In short, light from a source galaxy is sheared and (slightly) magnified by passing through a gravitational potential on its way to the observer; the observable anisotropic stretching is called the *reduced shear* g , which is a pseudovector with two components. (Because the distinction between shear and reduced shear is not important in the context of this paper, which is aimed at both the astronomical and statistical communities, we refer to g as simply “shear” for convenience.)

Shear measurements are confounded by several unavoidable observational effects. First, for ground-based telescopes, when the light passes through the atmosphere it is convolved with a kernel that must be inferred from the data. Second, telescope optics (whether in space or on the ground) also cause the image to be convolved with a kernel; this kernel may be more predictable than the atmospheric kernel because the optics may be well modeled. In any case, the effective kernel imposed by atmosphere *and* optics is referred to as the point-spread function (PSF). Third, emission from the sky causes a roughly constant “background” level to be added to the whole image. Fourth, the detectors sum the light falling in each pixel, effectively convolving the image with a square tophat window function, and sampling the resulting image at the center of each pixel. This extra convolution effect is treated by some authors as part of the PSF. Fifth, the finite number of photons collected in a given pixel is subject to Poisson noise (in addition the final detector readout adds Gaussian noise of zero mean, but this is ignored in GREAT08).

Thus a successful method must both filter the noise effectively and remove the significant PSF convolution kernel in the observed galaxy image. To represent a method’s ability to perform both tasks in a single number for the GREAT08 Challenge, we define a quality metric

$$Q = \frac{10^{-4}}{\langle (g_{ij}^m - g_{ij}^t)_{j \in k} \rangle_{ikl}^2} \quad (1)$$

where g_{ij}^m is the i th component of the measured shear for simulation j , g_{ij}^t is the corresponding true shear compo-

nent, the inner angle brackets denote an average over sets with similar shear value and observing conditions $j \in k$, and the outer angle brackets denote an average over simulations with different true shears k , observing conditions l and shear components i .

In our detailed discussion of the results below we also define a Q value for each simulation branch. In this case the average over different observing conditions k is omitted

$$Q_l = \frac{10^{-4}}{\langle (g_{ij}^m - g_{ij}^t)_{j \in k} \rangle_{ik}^2} \quad (2)$$

therefore

$$\frac{1}{Q} = \frac{1}{\langle Q_l \rangle_l}. \quad (3)$$

This definition has the effect of strongly penalising methods that perform poorly in any single simulation branch, which is useful because the simulation branches are all chosen to be realistic scenarios in which we need to be able to measure good shears. For a method to be used for all future analyses it must work well on all branches of the simulations. In particular, there are many small and low SNR galaxies that we would like to use for cosmic shear cosmology. However, the purpose of this results paper is to examine the performance of the different methods on the different branches in detail rather than relying on a single number Q to differentiate between methods.

To set this metric in context, if a single constant value of zero shear were submitted ($g_{1j}^m = g_{2j}^m = 0$ for all j) then since the rms true shear $\sqrt{\langle g_{ij}^t \rangle_{ij}} \sim 0.03$, Q would have a value ~ 0.1 . To date, methods tested in STEP1 and STEP2 and used on real data have $Q \sim 10$ to $Q \sim 100$ (Kitching et al. 2008), which is sufficient for the surveys on which they were employed but not sufficient for mid-term to far future surveys.

Amara & Réfrégier (2008) show that a deep full-sky (e.g. Euclid-like) survey requires that the additive error $c < 0.0003$ and the multiplicative error $m < 0.001$. For a pure additive error this translates to a requirement that $Q > 1000$ and we set this as our target for GREAT08 because additive errors are much more difficult to self-calibrate using pairs of

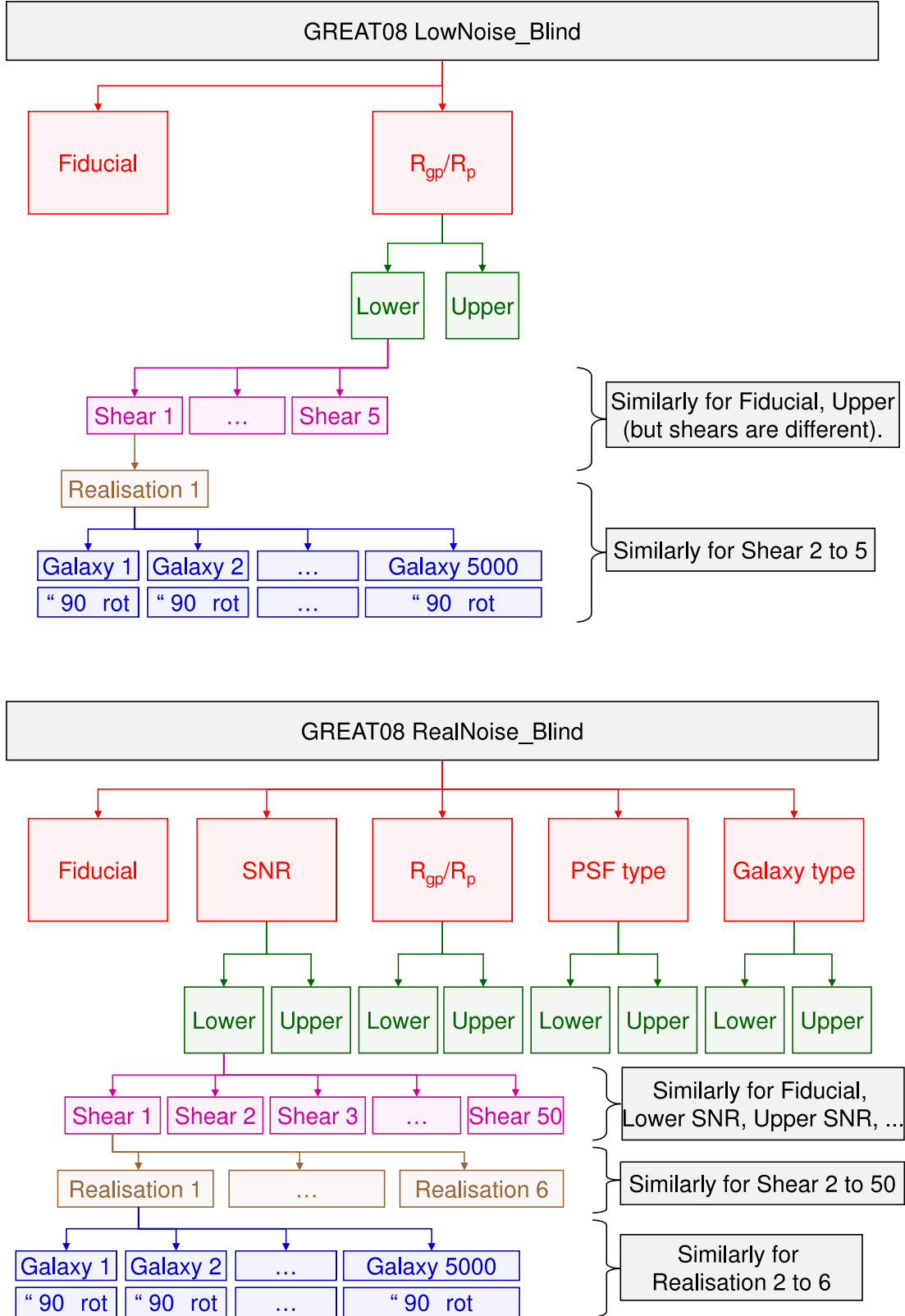


Figure 2. *Upper panel:* Schematic of the galaxy parameters used in LowNoise_Blind. Each realisation corresponds to a different set or FITS image file containing 10,000 galaxies. The schematic looks identical for LowNoise_Known. For RealNoise_Known there are 100 shears per branch in place of 5. The bottom row of boxes represents galaxies with the same properties as the penultimate row of boxes, but rotated by 90 degrees. *Lower panel:* Schematic of the galaxy parameters used in RealNoise_Blind.

tomographic redshift bins (Huterer et al. 2006b) (see also Van Waerbeke et al. 2006). A detailed analysis of the two separate terms is given in Appendix C.

As defined, Q penalises deviations from truth regardless of whether they are random or systematic. This is useful for selecting a winner, but much can be learned by separating errors into random and systematic parts. For the systematic part we follow STEP1 and STEP2 by defining a multiplicative error m and an additive error c as the best-fit parameters to

$$g_i^m - g_i^t = m_i g_i^t + c_i. \quad (4)$$

We show some results for the average of the two components $m = \langle m_i \rangle_i$, $c = \langle c_i \rangle_i$. For a given method, changes in m and c across simulation branches may indicate the strengths and weaknesses of the method.

Participants may optionally submit uncertainty estimates on their shears. These are compared to the residuals of the submitted shears over sets of simulations with nearly identical true shear values. If the uncertainty estimates are wrong by more than a factor of two, the submission is flagged as such, but is not penalised. The main purpose of GREAT08 is to produce a high Q value rather than yield correct uncertainty estimates.

A method is not useful if it obtains very small shear biases at the expense of throwing away most of the information and thus very noisy shear estimates. The quality factor Q will be worse if a method has very noisy shear estimates because the rms difference between the truth and submission will be non-negligible even if the biases are zero. We therefore calculate the scatter of the submitted shear values about the best linear fit to the true shears. Specifically, we plot submitted g_1 values as a function of true g_1 , with one point for each FITS file and fit the straight line described above. We find the rms residual to obtain the scatter σ_1 in the first component g_1 . We repeat for g_2 and write $\sigma \equiv \langle \sigma_i \rangle_i$ averaging over the two shear components i . See Kitching et al. (2008) for additional discussion.

4 METHODS

In this section we briefly summarise the algorithm used by each submitting group. Table 3 lists the participants, their methods, and the corresponding identifiers used in subsequent tables and in the figure legends. Methods with an asterisk indicate GREAT08 Team entries; these participants had access to the internal details of the GREAT08 Challenge simulations, but they did not consciously use this information in their analyses. Entries from PG, MV had some overlap with the GREAT08 Team. Not all submitting groups submitted results for both types of Blind simulation. An additional table (Table B1) in Appendix B gives further information including urls where more information can be found.

For a quick overview we attempt to summarise each method with just three action steps in Table 3. We see that a key differentiating factor is the stage at which an average is performed over galaxies in the image. HB, AL and USQM as “stacking” methods hereafter. The two different routes are illustrated in Fig. 3.

STEP2 classified methods according to their methods for PSF correction and construction of a shear estimator.

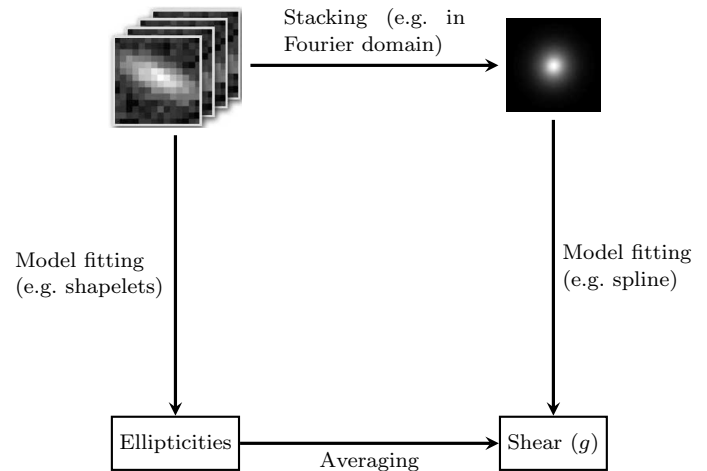


Figure 3. Illustration of the different routes to a combined shear statistic from multiple galaxies. The lower left route is the traditional approach in which each galaxy image is analysed separately to produce a shear estimate. The upper right route illustrates the “stacking” methods which average some statistic of each image and perform shear estimation on the averaged statistic.

PSF “deconvolution” methods convolve a model with the PSF before fitting as indicated by “* PSF” in the table; PSF “subtraction” methods subtract a contribution due to the size and ellipticity of the PSF. “Active” shear measurement methods sheared a “circular” galaxy model until it best matched the data, generally indicated by the word “fit” in the action list; “passive” methods constructed a shear estimator from a combination of shape statistics and an estimate of how these would further change under a shear. This classification system proved insufficient to capture the more varied behaviour of methods containing new ideas in GREAT08. We next summarise each method in turn, in order of decreasing Q value on RealNoise_Blind.

HB: The magnitude of the Fourier transform of the galaxy image raised to an arbitrary power is a characteristic feature of the individual galaxies. This feature is independent of the spatial location of the galaxy center to a high precision, provided that the smoothed galaxy intensity decays sufficiently fast towards the edge of the image. No other assumptions are necessary. Because the galaxy images are contaminated by Poisson noise, an unbiased estimator of the power spectrum is given by the power spectrum of the noisy image minus a constant. The resulting image obtained by averaging over the unbiased estimators of the individual galaxy power spectra is an elliptically contoured function multiplied by the power spectrum of the convolution kernel plus Gaussian noise. After suitable normalization, the square root of the covariance matrix of the elliptically contoured function is equal to the shear coordinate transformation matrix. For parameter fitting, HB used a weighted non-linear least square method for which the weights are equal to the inverse of the standard deviation of the noise. For more information see Hosseini & Bethge (2009).

Participant(s)	Key	Action 1	Action 2	Action 3
Hosseini, Bethge	HB	Estimate power spectrum	Average power spectra	Fit elliptical model * PSF
Lewis	AL	Estimate centroids	Average images	Fit elliptical model * PSF
Kitching	TK [†]	Fit elliptical model * PSF	Combine ellipticity PDFs	Calculate shear
Heymans	CH [†]	Measure weighted quadrupole moments	Correct for weight and PSF	Average shear estimates
Paulin, Gentile	PG	Fit elliptical model * PSF		Average shear estimates
Velander	MV	Fit flexed elliptical model * PSF		Average shear estimates
Kuijken	KK [†]	Fit elliptical model * PSF		Average shear estimates
Harmeling, Hirsch, Schölkopf	HHS3	Estimate centroids	Average good images	Fit elliptical model * PSF
Bridle	SB [†]	Fit elliptical model * PSF		Average shear estimates
Harmeling, Hirsch, Schölkopf	HHS2	Estimate centroids	Average images	Fit elliptical model * PSF
Harmeling, Hirsch, Schölkopf	HHS1	Fit elliptical Gaussian	Correct for model and PSF	Average shear estimates
Jarvis	MJ [†]	Fit “elliptical” model * PSF		Average shear estimates
Bridle, Schrabback	USQM [†]	Measure quadrupole moments - PSF	Average quadrupole moments	Calculate shear

Table 3. Table of participants, figure legend identifiers and pseudo-code which attempts to summarise the main actions carried out in each method. “* PSF” indicates that a PSF convolved model was fitted. “PDF” stands for probability density function. Daggers after the Key indicate GREAT08 Team entries. More information is provided in the main text and in Appendix B.

AL: This method was inspired by Kuijken (1999) and is described in Lewis (2009). Centroids for each galaxy are determined and all galaxies in a FITS image are stacked on a sub-pixel scale. A PSF convolved elliptical profile is fitted to this stacked image, and the ellipticity corresponds to the shear. As pointed out in Lewis (2009), the advantage of this approach is that the individual non-elliptical shapes of individual galaxies are averaged out. This fact was taken advantage of in HB, HHS2 and HHS3.

TK: The *Lensfit* code fits a sum of co-elliptical exponential and de Vaucouleurs models to each individual galaxy and the best fit ellipticity is found. The bulge (de Vaucouleurs component) to disk (exponential component) fraction is a free parameter in the fit. The shear is calculated using a Bayesian estimator. For more details see Appendix F of the GREAT08 Handbook and also Miller et al. (2007) and Kitching et al. (2008) The version used here differs from the previously published implementations by including sub-pixel estimation of galaxy positions and adaptive ellipticity grid refinement.

CH: An implementation of the longstanding KSB (Kaiser et al. 1995) method, which is the most widely used code on observational data. For more information, see Appendix C of the GREAT08 Handbook.

PG: For each galaxy, a 6-parameter Sersic model is convolved with the PSF and pixellated. This is fitted to the image through χ^2 minimization using the gradient-expansion algorithm by Levenberg-Marquardt. The six fitted parameters are: the centroid (2 parameters), the magnitude, the size, and the ellipticity (2 parameters). The estimated shear of an individual galaxy is derived from its fitted parameters and the averaged shear over a number of galaxies is the average of individual shears.

MV: This method is an extension of the KK method de-

scribed below. It is being developed with the aim of measuring higher order galaxy image distortions, known as flexion, as well as shear. These higher order distortions add important detail to the measurement of galaxy halo density profiles and to dark matter mapping. For more information on this method see Velander & Kuijken in prep. and for further detail on flexion see Bacon et al. (2006).

KK: Each individual galaxy is modelled as a sheared, circular source described by means of the first-order shear operators in shapelet space. The PSF is also modelled as a high-order shapelet expansion, and all convolutions are carried out in shapelet space using the prescriptions in Refregier (2003). For further information see Kuijken (2006) and Appendix D of the GREAT08 Handbook.

HHS1/HHS2/HHS3: In *HHS1* an elliptical Gaussian is fitted to each galaxy image by minimizing the mean-squared error via gradient descent in the 6 model parameters. As in *SB*, the average ellipticity is taken as an estimate for the shear. Due to the simplified galaxy model and the PSF blur a systematic bias is introduced, which is corrected for by off-setting the ellipticity values and via calibration using the training data. The methods *HHS2* and *HHS3* aim to be more robust by adopting the idea of *AL* to stack all galaxy images within one FITS file on a subpixel scale in order to increase the SNR. In addition, in *HHS3* corrupted images were removed before stacking.

SB: The *im2shape* code models each individual galaxy as a sum of co-elliptical Gaussians. The parameters are marginalised using MCMC sampling and the mean ellipticity of the samples is taken to correspond to the shear. For computational speed, only 16×16 pixels in the center of each postage stamp were used in the fit. See Appendix E of the GREAT08 Handbook and Bridle et al. (2002).

MJ: This algorithm seeks a coordinate system in which

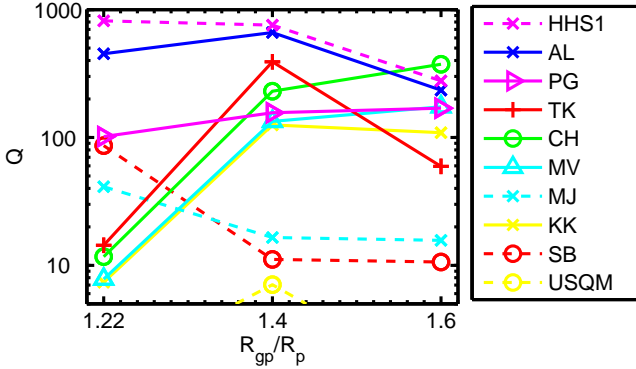


Figure 4. Our figure of merit Q as a function of galaxy size for `LowNoise_Blind`.

a model of the galaxy is found to be round. The model is convolved by the PSF and then compared to the observed pixel intensities. A shapelet decomposition is used for the underlying model, and roundness is defined as the second order shapelet coefficients being 0. Then the shear that brings this coordinate system back to the actual observation is assigned as the shape of the galaxy. For more information see Bernstein & Jarvis (2002), Nakajima & Bernstein (2007) and Appendix D of the GREAT08 Handbook.

USQM: This is a very simple method, not actually used in practice, but provided as a baseline comparison. The unweighted quadrupole moments of each galaxy are calculated within a square aperture of 20 pixels by 20 pixels. These are averaged (stacked) over all galaxies in each FITS image and the PSF is removed by subtracting the PSF quadrupole moments. See Appendix B of the GREAT08 Handbook for more information.

In terms of the nomenclature introduced in STEP2 most of the methods forward fit an elliptical PSF convolved model (“active”, “deconvolution”). This is in contrast to the situation in STEP1 and STEP2 where the majority of the methods were “passive” PSF subtraction methods. There were no stacking methods in STEP1 or STEP2.

5 RESULTS

There were two blind challenges: `LowNoise_Blind` contains high SNR images and `RealNoise_Blind` contains images with a realistic noise level. The GREAT08 Challenge prize for highest Q value is based on the `RealNoise_Blind` results. The `LowNoise_Blind` competition contained significantly less data and should have been an easier challenge. Furthermore, the galaxy properties in `LowNoise_Blind` were similar to those in `RealNoise_Blind` and are mostly co-centered bulge plus disk models. It could therefore have been useful to optimise some properties of methods on the `LowNoise_Blind` images in preparation for `RealNoise_Blind`. First, we examine the `LowNoise_Blind` results.

5.1 LowNoise Blind Results

Table 4 shows the `LowNoise_Blind` leaderboard at the close of the challenge. The winner in `LowNoise_Blind` is the Gauss method of S. Harmeling, M. Hirsch, and B. Schölkopf. The

Rank	ID	Method	Q
1	HHS1	Gauss	488
2	AL	CLT KK99	375
3	PG	gfit	136
4	TK	Lensfit	33.7
5	CH	KSBf90	32.4
6	MV	KKshapelets with flexion	21.2
7	MJ	BJ02 deconvolved shapelets	20.2
8	KK	KKshapelets	19.7
9	SB	im2shape	15.3
10	USQM	USQM	1.84

Table 4. `LowNoise_Blind` leaderboard at the close of the challenge. See Table 3 and Section 4 for more information about each method.

top three methods in `LowNoise_Blind` are not GREAT08 Team methods. Note that HB did not submit a result for `LowNoise_Blind`.

Fig. 4 shows our shear measurement figure of merit Q as a function of the ratio between the convolved galaxy size and the PSF size, R_{gp}/R_p . Since the number of galaxies decreases steeply as a function of galaxy size in real data, it is desirable to have a shear measurement method that allows the use of small galaxies. It is often assumed that shear measurement biases are larger for small galaxies. There are some examples where this is true in STEP2 Fig. 7, and Nakajima & Bernstein (2007) Fig. 5. However the shear biases are caused by a combination of two effects: a poorly measured PSF and inherent biases that exist even if the PSF is perfectly known. It is expected that an incorrect PSF model will affect small galaxies the most, since for the largest galaxies the PSF has little effect (e.g. Eq. 13 of Paulin-Henriksson et al. 2008). In GREAT08 the exact PSF equation is known and if this information is properly used then the results will tell us about the inherent biases, for which there are less clear expectations.

HHS1 (dashed magenta line in Fig. 4) is the clear winner overall in `LowNoise_Blind` and wins at both the fiducial and small galaxy sizes. The implementation of KSB by CH (solid green line in Fig. 4) provided the best performance for highly resolved galaxies. As discussed above, this general trend of increasing Q with increasing galaxy size was expected, and is followed for many methods. The winning method HHS1 performed worse as the galaxy size increased for `LowNoise_Blind`. We suggest that the method for calibrating the ellipticities for the PSF blurring was less reliable at large galaxy sizes due to the fact that the large elliptical galaxies sometimes extend beyond the 39×39 pixel postage stamp.

Further analysis of the `LowNoise_Blind` results in terms of multiplicative and additive shear calibration biases can be found in Appendix C1.

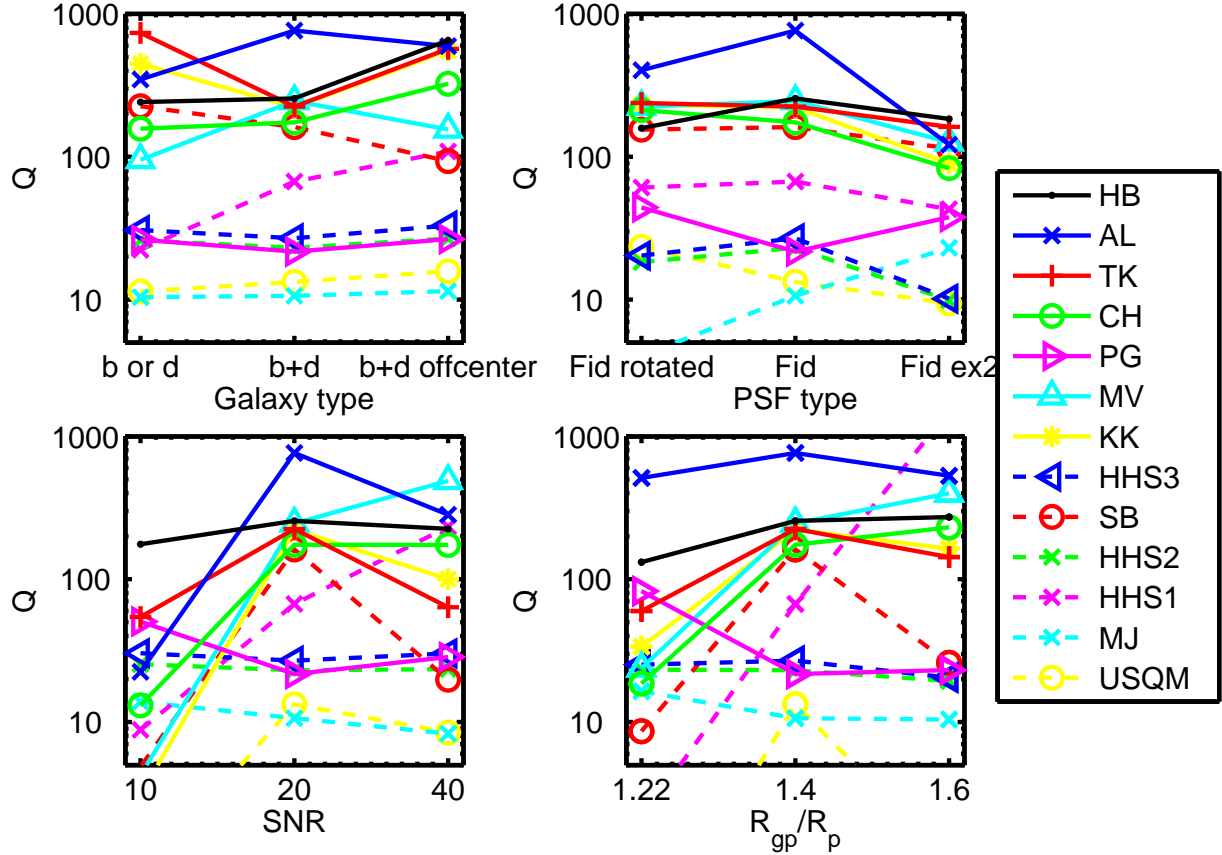


Figure 5. Shear measurement figure of merit Q as a function of simulation properties for RealNoise_Blind.

Rank	Author	Method	Q
1	HB	CVN Fourier	211
2	AL	KK99	131
3	TK	Lensfit	119
4	CH	KSBf90	52.3
5	PG	gfit	32.0
6	MV	KKshapelets with flexion	28.6
7	KK	KKshapelets	23.0
8	HHS3	GaussStackForwardGaussCleaned	22.4
9	SB	im2shape	20.1
10	HHS2	GaussStackForwardGauss	19.9
11	HHS1	Gauss	12.8
12	MJ	BJ02 deconvolved shapelets	9.80
13	USQM	USQM	1.22

Table 5. RealNoise_Blind leaderboard at the close of the challenge.

5.2 RealNoise Blind Results

The main challenge consisted of 27 million galaxies with roughly a factor of 10 more noise per pixel, corresponding to the type of image that we will ultimately want to use for cosmic shear. The RealNoise_Blind leaderboard at the close of the challenge is shown in Table 5. The winner of the GREAT08 Challenge is clearly the ‘CVN Fourier’ method by R. Hosseini and M. Bethge, HB. This method was inspired by the second-place AL method, but improves on a key limitation which was highlighted by Lewis (2009) in that it did not depend on the galaxy centroid.

Fig. 5 shows Q as a function of galaxy type, PSF type, SNR, and galaxy size for RealNoise_Blind. The central, fiducial, value is the same on each of the four panels. Each point on the panels corresponds to a single set of conditions; for example, for the SNR= 10 point, all other parameters are set at the fiducial value.

HB performs consistently well through all branches of the simulation, with significantly improved performance on the “b+d offcenter” galaxies. AL actually outperformed HB on six of the nine simulation branches, and obtains a Q value a factor of almost 4 larger than any other method for the fiducial simulation set, which is close to our target value of 1000. AL was second overall mostly as a result of a poor performance on the low SNR branch, and to a lesser extent on the “Fid $e \times 2$ ” PSF. It would be interesting to see if the results could be improved in either of these regimes,

for example with better centroiding at low SNR or better modeling of the “Fid $e \times 2$ ” PSF.

TK uses a model with coaligned exponential and de Vaucouleurs components which explains why the results on ‘b or d’ are so good. It also does well on ‘b+d offcenter’. If the galaxy model could be extended then this may improve the other results, which all use the fiducial galaxy type. KK also performs well on the “b or d” branch, and to a lesser extent, so does SB. Both these methods also assume galaxies have elliptical isophotes, which matches exactly the model in the simulation.

The best method at the high SNR end of RealNoise_Blind is MV (KK shapelets with flexion), which also performs well for the larger galaxies. HHS1 on the larger galaxy branch is the only method on any branch to achieve greater than the $Q \sim 1000$ level required for future precision surveys. This trend is surprising given that it reverses the trend with R_{gp}/R_p seen in LowNoise_Blind. It also obtains a good Q value at the high SNR end (SNR=40) of RealNoise_Blind, which is not surprising given the strong performance in LowNoise_Blind (SNR=200).

Note that the absolute value of Q will depend on the noise on the shear measurements and on the number of realisations over which the average is performed. Therefore it is not terribly meaningful to compare values between LowNoise and RealNoise, however the m and c values can be usefully compared. These values are discussed for RealNoise_Blind in Appendix C2.

6 DISCUSSION

The GREAT08 Challenge has moved shear measurement research significantly beyond STEP1 and STEP2. We recognised that the shear measurement problem is intrinsically a statistical, not astronomical, problem and wrote a description addressed at non-astronomers (the GREAT08 Handbook). At the launch of the challenge we had achieved the following:

- We moved from end-to-end simulations to simpler simulations which isolate a key difficult part of the shear measurement problem without confusion from other effects.
- The simulations focus in on key areas of simulation parameter space and allow a detailed assessment of the success of different methods in the various regimes explored.
- We used a larger suite of simulations to assess methods at a much higher level of precision than was possible in STEP1 and STEP2; this level of precision is appropriate for the most ambitious planned cosmic shear surveys.
- The GREAT08 Team was formulated from the original STEP Team and new groups e.g. LensFit were incorporated and assessed as part of the blind competition.
- We formulated a new figure of merit with which to assess the results of the challenge and provided active leaderboards during the challenge.
- The GREAT08 Team codes were all made publically available at the launch of the challenge.

In addition to the six GREAT08 Team entries on the leaderboards at the start of the challenge there were five new entries which included computer scientists and non-lensers. The GREAT08 Challenge has therefore achieved its main

goal of reaching out beyond the existing shear measurement community.

The GREAT08 Challenge prize for the highest Q value in RealNoise_Blind went to Reshad Hosseini and Matthias Bethge (HB). The GREAT08 Team also awarded a prize for a significant contribution to advancing shear measurement methods to Antony Lewis (AL), specifically for superb results over a significant range of simulation branches, and a timely summary of the problem that highlighted important issues (Lewis 2009). Neither of these prizewinning groups are associated with existing lensing groups.

The shear measurement problem has been invigorated by the Challenge and by the new ideas brought in. The most important new ideas are

- a consideration of the impact of the assumed galaxy model on the accuracy of shear measurements;
- a reconsideration of the stage in the measurement process at which to average observational quantities.

The assumed galaxy model has recently been shown to be important in causing biases in shear measurement (Lewis 2009; Voigt & Bridle 2009; Melchior et al. 2009). The existence of this bias was first pointed out by Lewis (2009) and this was the motivation for using a “stacking” method by both AL, HB and HHS2/3. In both methods the individual galaxy properties are averaged away before a model is fitted, by averaging together simple statistics of the galaxy images. AL pointed out that averaging together the images themselves is not fully independent of the galaxy model, the PSF or the shear because a centroid must be estimated before stacking. HB solved this by instead stacking two-point statistics of the image (specifically the power spectrum), which is insensitive to the centroid. This raises the general question of what quantity should be averaged (or otherwise combined), and at what stage, when presented with many galaxy images all with the same shear value.

The success of the stacking methods on images with constant galaxy properties leads to questions about how well stacking could work on more realistic data. Because shear varies with position in real data, the stacking process will average the shear signal as well as nullify the observation effects it was designed to remove. However, we speculate that the average shear in a patch of sky is still a useful cosmological quantity, as has sometimes been considered (e.g. most recently the top hat shear variance statistic shown in Fig. 5 of Fu et al. 2008) (see also cosmic shear ring statistics described in Schneider & Kilbinger 2007; Eifler et al. 2009). For lensing analyses of clusters or galaxies, the assumption of axisymmetry is often made which lends itself naturally to stacking in annuli about the center of the cluster. It would also be necessary to determine how to properly stack galaxies with a range of SNR or PSF in a given patch of sky, and especially how to tackle galaxies with a range of redshifts, and thus a range of shears. For example, 3D lensing (Heavens 2003; Kitching et al. 2008) is specifically designed to take into account the probability distributions in redshift and shear for each galaxy separately.

The results of GREAT08 show that different methods are successful in different corners of parameter space and many results are close to the target Q value of 1000. The results from different simulation branches give clues as to where methods could be improved and we expect to see further work on developing the methods. The winning method

HB only finished its first run two days before the challenge deadline and therefore it could be optimised further. In addition it shows remarkably stable performance as a function of SNR implying that the good Q results might continue down to even lower SNR values. On the fiducial simulations AL achieved a Q value nearly four times higher than previous work, marking a significant improvement. The performance at low SNR is the clear next area for investigation for this method. TK obtains good results, in particular when the underlying model was similar to the model in the simulation.

GREAT08 marks the first in a series of GREAT challenges, which are intended to be a roadmap of simulations leading up to the real grand observational challenges that the community will face with the next generation of cosmic shear surveys. The next challenge in the series will be GREAT10. This will represent the next step towards creating fully realistic simulations. Many aspects of the GREAT10 simulation will be familiar from GREAT08, though they will differ in some key aspects. The most significant change will be spatial variation: both the shear and PSF will vary across each image. GREAT10 will also invite people to solve an extra cosmic shear challenge, estimating the convolution kernel from images to sufficient accuracy. For more information on GREAT10 visit <http://www.great10challenge.info>.

ACKNOWLEDGMENTS

We thank the PASCAL Network for support. We thank the GREAT08 Team and participants at the GREAT08 Mid-Challenge Workshop and GREAT08 Final Workshop including Hakon Dahle, Domenico Marinucci and Uros Seljak. We thank the organisers of Cosmostats09 for hosting the GREAT08 Challenge Final Workshop within Cosmostats09 in Ascona. We thank the Aspen Center for Physics where part of this work was carried out. We are grateful to Jeremy Yates for help with setting up the GREAT08 server. SLB thanks the Royal Society for support in the form of a University Research Fellowship. TDK is supported by STFC Rolling grant RA0888. JR is supported in part by the Jet Propulsion Laboratory, which is run by Caltech under a contract from NASA. MS was supported in part by the program #11288 provided by NASA through a grant from the STScI, which is operated by the Association of Universities for Research in Astronomy, Inc., under NASA contract NAS 5-26555.

This paper has been typeset from a $\text{\TeX}/\text{\LaTeX}$ file prepared by the author.

REFERENCES

Albrecht A., Bernstein G., Cahn R., Freedman W. L., Hewitt J., Hu W., Huth J., Kamionkowski M., Kolb E. W., Knox L., Mather J. C., Staggs S., Suntzeff N. B., 2006, ArXiv Astrophysics e-prints, ADS, astro-ph/0609591
 Albrecht A. J., Bernstein G., 2007, Phys. Rev., D75, 103003, astro-ph/0608269
 Albrecht A. J., et al., 0901.0721

Amara A., Réfrégier A., 2008, MNRAS, 391, 228, ADS, arXiv:0710.5171 [astro-ph]
 Bacon D. J., Goldberg D. M., Rowe B. T. P., Taylor A. N., 2006, MNRAS, 365, 414, astro-ph/0504478
 Bacon D. J., Refregier A. R., Ellis R. S., 2000, MNRAS, 318, 625, astro-ph/0003008
 Bernstein G., Huterer D., 2009, arXiv:0902.2782 [astro-ph]
 Bernstein G., Ma Z., 2008, ApJ, 682, 39, arXiv:0712.1562 [astro-ph]
 Bernstein G. M., 2009, ApJ, 695, 652, arXiv:0808.3400 [astro-ph]
 Bernstein G. M., Jarvis M., 2002, AJ, 123, 583, ADS, astro-ph/0107431
 Bridle S., King L., 2007, New J. Phys., 9, 444, arXiv:0705.0166 [astro-ph]
 Bridle S., Kneib J.-P., Bardeau S., Gull S., 2002, in Natarajan P., ed., The shapes of galaxies and their dark halos, Proceedings of the Yale Cosmology Workshop "The Shapes of Galaxies and Their Dark Matter Halos", New Haven, Connecticut, USA, 28-30 May 2001. Edited by Priyamvada Natarajan. Singapore: World Scientific, 2002, ISBN 9810248482, p.38 Bayesian galaxy shape estimation. pp 38–+, ADS
 Bridle et al. 2009, Annals of Applied Statistics, 3, 6, arXiv:0802.1214 [astro-ph]
 Crittenden R. G., Natarajan P., Pen U.-L., Theuns T., 2001, ApJ, 559, 552, astro-ph/0009052
 Eifler T., Schneider P., Krause E., 2009, 0907.2320
 Fu L., et al., 2008, A&A, 479, 9, 0712.0884
 Heavens A., 2003, MNRAS, 343, 1327, astro-ph/0304151
 Heymans C., Heavens A., 2003, MNRAS, 339, 711, astro-ph/0208220
 Heymans et al. 2006, MNRAS, 368, 1323, ADS, astro-ph/0506112
 Hosseini R., Bethge M., 2009, Max Planck Institute for Biological Cybernetics Technical Report
 Huterer D., Takada M., Bernstein G., Jain B., 2006a, MNRAS, 366, 101, astro-ph/0506030
 Huterer D., Takada M., Bernstein G., Jain B., 2006b, MNRAS, 366, 101, astro-ph/0506030
 Joachimi B., Schneider P., 2008, arXiv:0804.2292 [astro-ph]
 Joachimi B., Schneider P., 2009, arXiv:0905.0393 [astro-ph]
 Kaiser N., Squires G., Broadhurst T., 1995, ApJ, 449, 460, astro-ph/9411005
 Kaiser N., Wilson G., Luppino G. A., 2000, astro-ph/0003338
 King L. J., 2005, A&A, 441, 47, astro-ph/0506441
 King L. J., Schneider P., 2003, A&A, 398, 23, astro-ph/0209474
 Kitching T. D., Heavens A. F., Verde L., Serra P., Melchiorri A., 2008, Phys. Rev., D77, 103008, arXiv:0801.4565 [astro-ph]
 Kitching T. D., Miller L., Heymans C. E., van Waerbeke L., Heavens A. F., 2008, MNRAS, 390, 149, ADS, arXiv:0802.1528 [astro-ph]
 Kitching T. D., Taylor A. N., Heavens A. F., 2008, arXiv:0801.3270 [astro-ph]
 Kuijken K., 1999, A&A, 352, 355, astro-ph/9904418
 Kuijken K., 2006, A&A, 456, 827, astro-ph/0601011
 Lewis A., 2009, ArXiv e-prints, ADS, arXiv:0901.0649

Table A1. PSF ellipticities.

PSF type	Filename	e_1	e_2
Fid	set0001	-0.019	-0.007
Fid rotated	set0002	0.007	-0.019
Fid $e \times 2$	set0003	-0.038	-0.014

[astro-ph]

Ma Z.-M., Hu W., Huterer D., 2005, ApJ, 636, 21, astro-ph/0506614

Massey et al. 2007, MNRAS, 376, 13, ADS, astro-ph/0608643

Melchior P., Boehmert A., Lombardi M., Bartelmann M., 2009, arXiv:0906.5092 [astro-ph]

Miller L., Kitching T. D., Heymans C., Heavens A. F., van Waerbeke L., 2007, MNRAS, 382, 315, ADS, arXiv:0708.2340 [astro-ph]

Nakajima R., Bernstein G., 2007, AJ, 133, 1763, ADS, astro-ph/0607062

Paulin-Henriksson S., Amara A., Voigt L., Refregier A., Bridle S. L., 2008, A&A, 484, 67, arXiv:0711.4886 [astro-ph]

Peacock J. A., et al., 2006, astro-ph/0610906

Peng C. Y., Ho L. C., Impey C. D., Rix H.-W., 2002, AJ, 124, 266, ADS, astro-ph/0204182

Refregier A., 2003, MNRAS, 338, 35, astro-ph/0105178

Schneider P., Kilbinger M., 2007, A&A, 462, 841, astro-ph/0605084

Sersic J. L., 1968, Atlas de galaxias australes. Cordoba, Argentina: Observatorio Astronomico, 1968, ADS

Takada M., White Martin J. ., 2004, ApJ, 601, L1, astro-ph/0311104

van Waerbeke L., et al., 2000, A&A, 358, 30, astro-ph/0002500

Van Waerbeke L., White M., Hoekstra H., Heymans C., 2006, Astropart. Phys., 26, 91, astro-ph/0603696

Voigt L. M., Bridle S. L., 2009, arXiv:0905.4801 [astro-ph]

Wittman D. M., Tyson J. A., Kirkman D., Dell'Antonio I., Bernstein G., 2000, Nature, 405, 143, astro-ph/0003014

Zhang P., 2008, arXiv:0811.0613 [astro-ph]

APPENDIX A: DETAILS OF THE IMAGE SIMULATIONS

A1 PSF models

In an attempt to isolate problems in the shear estimation pipelines and make the challenge more accessible we provided maximal information about the PSFs used during the competition.

The PSFs had a truncated Moffat profile

$$I_p(r) = \begin{cases} \left(1 + \left(\frac{r}{r_d}\right)^2\right)^{-\beta} & r < r_c \\ 0 & r \geq r_c \end{cases} \quad (\text{A1})$$

where we set $\beta = 3.5$. This profile is motivated by the combination of diffraction limited optics with random Gaussian blurring by the atmosphere and is therefore reasonably representative of PSFs for ground-based telescopes. The scale radius r_d was determined by setting the Full Width at Half

Maximum (FWHM) to 2.85 pixels. r_c was set to twice the FWHM. Three different PSFs were used in the GREAT08 Challenge, each with a different ellipticity, as shown in Table A1.

Star catalogues consisted simply of the position of the point source. The x positions were drawn from a Gaussian of standard deviation 1.2 pixels centered on the middle of the postage stamp, similarly for the y positions. The star catalogues were provided at the time of the challenge. The convolution kernel and image generation method are described below.

A2 Galaxy catalogue generation

The information provided in this appendix subsection was not available during the Challenge.

In general, the galaxies in GREAT08 are the sum of two components, each with a Sersic (Sersic 1968) intensity profile

$$I(r) = \begin{cases} I_o \exp\left(-\kappa(r/r_e)^{1/n}\right) & r < 4r_e \\ 0 & r \geq 4r_e \end{cases} \quad (\text{A2})$$

where $I(r)$ is the amount of light per unit area at a radius r , and $\kappa \simeq 2n - 0.331$ (see e.g. Peng et al. 2002). The scale radius r_e and the total intensity (which determines I_o) are free parameters specified in the catalogues. The first component, with $n = 4$, is an approximation to the central bulge component of galaxies, corresponding to a de Vaucouleurs profile. The second component, with $n = 1$, is an approximation to the exponential disk component of galaxies. Circular galaxy images are made according to the profile $I(r)$ described above and then distorted according to the galaxy ellipticity and shear as described below.

The x and y positions of the bulge component were each drawn from a Gaussian of standard deviation 1.2 pixels centered on the middle of the postage stamp. By default the positions of the disk component were set equal to those of the bulge, except in one branch of the RealNoise_Blind simulations, as described below (see Table 2).

For each object, the total flux (integral of $I(r)$ over the postage stamp) in the disk component, as a fraction of the total flux in both components, is in general a random number drawn from a uniform distribution between 0 and 1. However, for LowNoise_Known, RealNoise_Known, and one branch of RealNoise_Blind, this fraction was set to *either* 0 *or* 1. So, in these simulations, the galaxies had either a pure de Vaucouleurs or pure exponential profile.

The scale radii r_e of each component were set by considering high resolution circular galaxy images after convolution with the appropriate PSF. For single-component models (i.e. when the bulge to total flux is zero or unity), r_e is set such that the convolved image has a FWHM of 1.4 times that of the PSF, $F_{gp} = 1.4F_p$, in the fiducial branch. Values 1.22 or 1.6 were used for some other branches to explore the effect of galaxy size, as detailed below (see Tables 1 and 2). The resulting r_e values for single-component models are provided in Table A2. For two-component models the disk scale radius is a set multiple of the bulge scale radius, $r_{e,d} = 2r_{e,b} * r_{e,d0}/r_{e,b0}$ using values from Table A2. The bulge scale radius was set by simulating a high resolution two-component circular model with the required bulge to to-

Table A2. Galaxy scale radius values for single-component galaxy models. The left hand column gives the ratio of PSF convolved galaxy FWHM to the PSF FWHM. The middle column gives the scale radius for a single component disk model. The right hand column gives the scale radius for a single component bulge model. These values are interpolated to produce scale radius values for two-component models, as described in the text.

R_{gp}/R_p	Disk $r_{e,d0}$	Bulge $r_{e,b0}$
1.22	0.82	1.59
1.4	1.3	3.8
1.6	2.4	18.0

tal flux ratio and finding the value such that the FWHM had the required value (by default 1.4 times the PSF FWHM).

The ellipticities of the bulge and disk were drawn from

$$P(\epsilon) = \epsilon \left(\cos\left(\frac{\pi\epsilon}{2}\right) \right)^2 \exp\left(-\left(\frac{2\epsilon}{B}\right)^C\right) \quad (\text{A3})$$

with $B = 0.05$, $C = 0.58$ for the bulge and $B = 0.19$, $C = 0.58$ for the disk; $\epsilon \equiv (a^2 - b^2)/(a^2 + b^2)$ where a and b are the major and minor axes respectively. Since ellipticities close to unity become unphysical, we truncate the distribution at $\epsilon = 0.9$ and set all objects with $\epsilon > 0.9$ to have $\epsilon = 0.9$. This distribution was loosely motivated by results from the APM survey (Crittenden et al. 2001); The bulge and disk ellipticities are drawn independently from the above distributions and are thus uncorrelated. The angle between the bulge major axis and the positive x axis is drawn from a uniform distribution between 0 and 180 degrees. The disk angle is equal to the bulge angle but perturbed by a Gaussian of standard deviation 20 degrees.

Five thousand galaxy parameters were simulated per image set by drawing from the above distributions. To minimise noise the parameters were all rotated by 90 degrees to produce the remaining 5000 galaxy parameters. (i.e. all angles are increased by 90 degrees, x positions become y positions, and y positions become negative x positions.) The list was randomised to hide the pairings. This paired rotation was introduced in STEP2 to reduce shape noise. In the absence of a PSF or shear the shear estimates from each galaxy in a pair are expected to cancel, thus removing noise arising from the intrinsic ellipticities of galaxies.

Signal-to-Noise Ratios (SNR) are assigned in the catalogues and are used during image simulation to set the flux in the galaxy image. For LowNoise images the value is 200, and for RealNoise images the default value is 20, with variations to 10 and 40 within RealNoise_Blind. The definition of this number in terms of the noise model is described in the following subsection.

For LowNoise_Known and RealNoise_Known the galaxies all have just a single component and within each set, each galaxy is assigned a de Vaucouleurs or an exponential profile at random. The galaxies in LowNoise_Blind all have a bulge plus disk two-component model as described in the text above. The majority of the galaxies in RealNoise_Blind have the same two-component model as in LowNoise_Blind. One of the nine RealNoise_Blind branches has single-component galaxies as in the Known simulations. The two-component models all share the same centroid for the bulge and disk, ex-

cept for one of the nine RealNoise_Blind branches, in which the bulge is off-centered from the disk by a Gaussian of standard deviation 0.3 pixels.

The true shears for LowNoise_Known and RealNoise_Known were provided throughout the challenge. They are Gaussian distributed with a standard deviation of 0.03 in each of g_1 and g_2 , and zero mean. The true shears for LowNoise_Blind and RealNoise_Blind have now been released, and are illustrated in Fig. A1. These shears are perturbations around the root values $g_1 = (-1, 0, 1, 0, -1/\sqrt{2}) \times 0.037$ and $g_2 = (0, 0, 0, 1, -1/\sqrt{2}) \times 0.037$ and thus do not have zero mean. This distribution is chosen instead of a Gaussian to improve the uncertainties on linear fits to the output versus true shear. For LowNoise_Blind, one position in shear space is drawn from around each root and there is one set with this shear. For RealNoise_Blind, 50 positions in shear space are drawn from around each root and there are 6 sets with each shear, as illustrated in Fig. 2.

A3 Image simulations

The galaxy images are created according to the *forward process* using a Monte Carlo simulation technique. The general idea is that the intensity of a pixel in the image of a galaxy is directly proportional to the number of photons falling into that pixel. The photon count at each point depends on the intensity distribution (the light profile) of the galaxy. Therefore, if we draw random samples (photons) from the theoretical light profile function and then count the number of photons falling in each pixel, we obtain the image of galaxy with the required light profile. The circular light profile thus obtained is then reshaped by applying the necessary transformations to the coordinates of the photons. Since the point-spread function (PSF) can be considered as a probability distribution, a similar method can be used to simulate it. The light profile of the galaxy is convolved with the PSF and finally pixelized into a FITS image.

In general, any Monte-Carlo technique can be used for the simulation of the light profile. We use inverse transform sampling for this purpose. It is conceptually simple and generally applicable for sampling from a one-dimensional probability distribution. The basic principle is that, given a continuous random variable U distributed uniformly in $[0, 1]$ and a random variable X with cumulative distribution F , then $X = F^{-1}(U)$ has distribution F . In other words, to sample from X , we generate a random sample U and find the value of X at which the cumulative distribution is equal to U .

In order to simulate the photons distributed by a Sersic Law, we need to find the cumulative distribution of the density given by Equation A2. Taking $r_e = 1$ and substituting $R = kr^{1/n}$, we obtain the cumulative distribution as

$$F(R) = -\frac{\Gamma(2n, R)}{\Gamma(2n)}, \quad (\text{A4})$$

where n is the Sersic index and $\Gamma(a, x)$ is the incomplete Gamma function. The inverse of the distribution can be approximately calculated by using linear interpolation, given that we have an ordered set of values of $\{R, F(R)\}$ for the range of R (e.g., from 0 to 20).

The circular light profile of the galaxy obtained by the

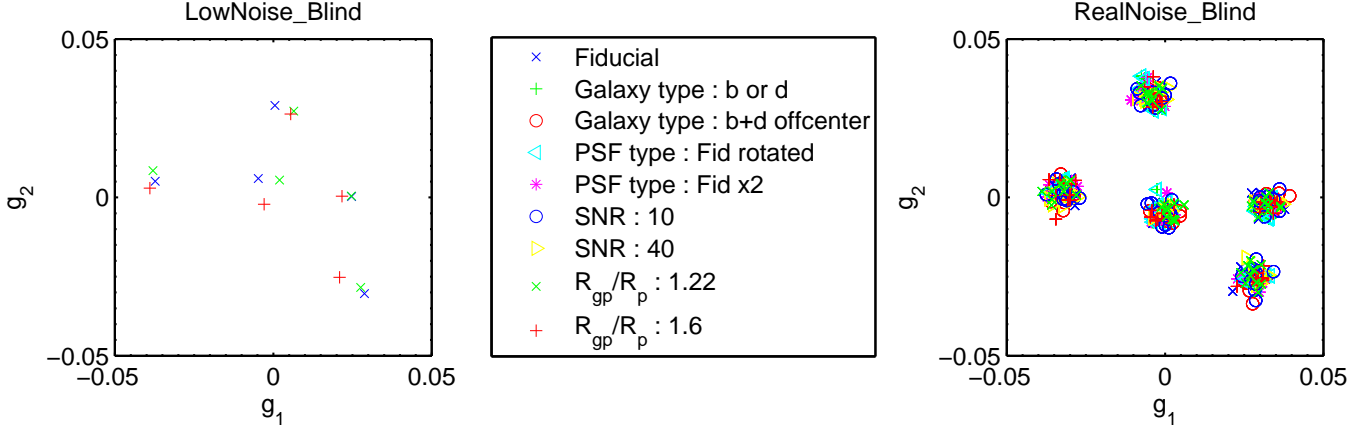


Figure A1. True shears for LowNoise_Blind and RealNoise_Blind, color coded for the different branches of the simulations.

method above is made larger, elliptical and rotated according to the values of scale radius r_e , axis ratio q and angle ϕ respectively. These operations can be represented in the form of matrices as

$$\begin{pmatrix} x_e \\ y_e \end{pmatrix} = \begin{pmatrix} \frac{1}{\sqrt{q}r_e} & 0 \\ 0 & \sqrt{q}r_e \end{pmatrix} \begin{pmatrix} x \\ y \end{pmatrix}, \quad (\text{A5})$$

$$\begin{pmatrix} x_r \\ y_r \end{pmatrix} = \begin{pmatrix} \cos(\phi) & -\sin(\phi) \\ \sin(\phi) & \cos(\phi) \end{pmatrix} \begin{pmatrix} x_e \\ y_e \end{pmatrix}. \quad (\text{A6})$$

The shear from the gravitational lensing is applied next. This operation can be written as

$$\begin{pmatrix} x_s \\ y_s \end{pmatrix} = \begin{pmatrix} 1 + g_1 & g_2 \\ g_2 & 1 - g_1 \end{pmatrix} \begin{pmatrix} x_r \\ y_r \end{pmatrix}. \quad (\text{A7})$$

For computational simplicity, we combine all of the above operations into a single matrix given by

$$\begin{pmatrix} r_e((1 + g_1)c - g_2s)/\sqrt{q} & r_e(g_2c - (1 - g_1)s)/\sqrt{q} \\ r_e\sqrt{q}((1 + g_1)s + g_2c) & r_e\sqrt{q}(g_2s + (1 - g_1)c) \end{pmatrix} \quad (\text{A8})$$

where $c \equiv \cos \phi$ and $s \equiv \sin \phi$.

Having obtained the light profile of the galaxy, we move on to create a Moffat PSF and convolve it with the galaxy. Using a similar procedure to that described above for the Sersic profile, we can simulate Moffat PSF given by the Equation A1. Each sample from the PSF corresponds to the displacement of the photon when convolved with the galaxy. The circular galaxy can be scaled to the required FWHM and made elliptical by applying the transformation

$$\begin{pmatrix} x_p \\ y_p \end{pmatrix} = \begin{pmatrix} 1 - e_1 & -e_2 \\ -e_2 & 1 + e_1 \end{pmatrix} \begin{pmatrix} x \\ y \end{pmatrix}. \quad (\text{A9})$$

Assuming that the number of samples in the light profile and the PSF are the same, the convolution of the image is accomplished by adding the positions of the galaxy and PSF photons. The image is pixelized by counting the number of photons falling into each pixel of the postage stamp and then it is normalized.

The galaxy images in GREAT08 contain two different light profiles. The final image is created by adding together two images with different light profiles. If I_1 and I_2 represent two galaxy images with different light profiles, the final

image I_{final} is created by the equation

$$I_{\text{final}} = mI_1 + (1 - m)I_2, \quad (\text{A10})$$

where $0 \leq m \leq 1$ is a multiplication factor. Poisson noise is then added to each pixel according to the SNR.

CCD detectors on ground-based telescopes collect a finite number of photons from both astrophysical objects and atmospheric emission. We therefore mimic this effect by adding the background level $B = 1 \times 10^6$ to each pixel, and drawing a number from a Poisson distribution with a mean equal to the total number (background plus galaxy) in each pixel. For numerical convenience we then subtract B from each pixel. For the RealNoise simulations, this background is much larger than the contribution from the galaxy, so this process is closely approximated by adding a Gaussian random number of standard deviation \sqrt{B} with zero mean.

Before the noise model is applied, the total flux in the galaxy is set using the SNR given in the catalogue, and the background level discussed above. Details are given in the appendix, but in summary we define SNR as the flux divided by the uncertainty in the flux obtained if the true shape (but not normalisation) of the object is known.

For the purpose of the SNR calculations we approximate the Poisson noise as a Gaussian of standard deviation \sqrt{B} for both LowNoise and RealNoise simulations. We follow the definition

$$\text{SNR} = \frac{F}{\sigma_F} \quad (\text{A11})$$

where the flux F is the sum of the galaxy counts in each pixel I_i

$$F = \sum_i I_i \quad (\text{A12})$$

and σ_F is the uncertainty in the flux. In general the uncertainty in the flux depends on the assumptions used to measure it. We make the assumption that the true galaxy shape (profile of counts in all the pixels) is known precisely up to an overall unknown scaling which is proportional to the flux. By considering a χ^2 fit it can then be shown that

$$\sigma_F = \sqrt{B} \frac{F}{(\sum_i I_i^2)^{0.5}} \quad (\text{A13})$$

and therefore the flux can be set such that

$$\left(\sum_i I_i^2\right)^{0.5} = \text{SNR}\sqrt{B}. \quad (\text{A14})$$

We note that the images produced using the above ellipticities and r_e values give some very elliptical images that extend beyond the 39×39 postage stamp.

APPENDIX B: ADDITIONAL INFORMATION ON METHODS

At the launch of the challenge the GREAT08 Team had put six results on the leaderboard, accompanied by a code wiki <http://great08challenge.pbworks.com> summarising the codes used and linking to downloadable versions of the code that was used on the GREAT08 simulations. Over the course of the challenge this wiki was updated by external GREAT08 participants, several of whom also provided their codes. The key elements of this code wiki are captured in Table B1.

APPENDIX C: DETAILED ANALYSIS OF RESULTS

C1 LowNoise_Blind

The overall performance, as measured by Q , has contributions from various competing effects. We break these up into a multiplicative bias m , an additive bias c and an rms dispersion σ , as defined in Section 3. For each of the three simulation branches in LowNoise_Blind we fit a straight line to a plot of submitted g_1 versus true g_1 values and identify the slope as $(m_1 + 1)$ and c_1 as the offset. We repeat for g_2 and average the multiplicative biases together to obtain an overall value m , similarly for the additive bias c . The scatter σ is given by the standard deviation of the residuals. Note that although the 90 degree rotations in GREAT08 substantially reduce the effect of shape noise, this would be a large additional contribution to the statistical uncertainty from realistic data, as it roughly adds in quadrature with the statistical scatter (at the level of about 0.2 per galaxy).

The finite number of simulations means that these values cannot be determined exactly. Therefore we also estimate uncertainties on the fitted multiplicative and additive biases from the submitted shear values. The uncertainty on m depends on the shear measurement method used and on the simulation properties. We calculate the uncertainty on the estimated m_i by calculating the likelihood as a function of m_i and c_i and marginalising over c_i . We then calculate an average uncertainty on m over shear components i . Uncertainty decreased with increasing galaxy size for most methods, and the winning method HHS1 had one of the smaller uncertainties on m , decreasing from 5×10^{-3} at $R_{gp}/R_p = 1.22$ to 2.3×10^{-3} at $R_{gp}/R_p = 1.6$. This may be compared to the multiplicative bias values m obtained by different groups, and we see that the uncertainty is small compared to at least one of the values obtained by each group and therefore is not the limiting factor in interpreting these results.

The uncertainties on the additive biases c_1 and c_2 also

decrease with increasing galaxy size, as expected. At a given galaxy size they range over almost an order of magnitude for the different methods. A typically low uncertainty was obtained by HHS1 across the range of galaxy sizes, and it varies from 10^{-4} at $R_{gp}/R_p = 1.22$ to 3×10^{-5} at $R_{gp}/R_p = 1.6$. Again, this is much smaller than the additive shear biases seen by all groups for at least one galaxy size and is therefore not the limiting factor in obtaining small biases.

Fig. C1 shows the multiplicative bias m and additive bias c as a function of R_{gp}/R_p for LowNoise_Blind. We now see that HHS1, performs less well at large galaxy sizes due to an increased multiplicative bias, indicating that the shears are overestimated for these galaxy sizes. In the Q plot (Fig. 4) the second highest method, AL (blue solid line), does best at the fiducial size and worse at larger and smaller sizes. On the more detailed figures of multiplicative and additive biases we see that the picture seems yet more curious, with good m and c values (close to zero) at small galaxy sizes, and becoming worse at large sizes. A more detailed analysis shows that the slight improvement at the fiducial galaxy size can be attributed to a partial cancelation between the effects of a negative m and a positive c . The third best result, PG, is relatively insensitive to the galaxy size; this effect is mirrored in the additive bias, which dominates the overall Q result since the multiplicative bias is relatively small.

We see that the CH method acquired a very large positive m at small R_{gp}/R_p , indicating a consistent $\sim 12\%$ overestimation of the true shear when the galaxies are poorly resolved. TK has best performance all round on the fiducial model and this may be expected because LensFit was optimised to work well on typical galaxies used for cosmic shear, which therefore tends to coincide with the fiducial model used for GREAT08. The fact that MJ, SB and USQM consistently underestimate the shear is the dominant contribution to their poor performance. MV and KK both underestimate the shear at small R_{gp}/R_p , but overestimate the shear at moderate and large R_{gp}/R_p . Note that the MV method is an extension of the KK method, and the two performed very similarly in all the LowNoise_Blind plots. Several methods (KK, MV, USQM, CH) had the largest additive biases c for poorly resolved galaxies, which may suggest that the information about the true PSF model was not fully incorporated into their analyses.

As discussed in Section 3, a successful method needs to produce reasonably low noise shear measurements, which we quantify by the scatter σ , shown in Fig. C1. The scatter decreases as the galaxy size is increased, which is expected as information on the galaxy can be obtained from more image pixels. There is about an order of magnitude difference between the methods, with HHS1 having a consistently low scatter around 10^{-4} . Since there are 10,000 galaxies in each FITS file this corresponds to an uncertainty on the shear of each individual galaxy of 0.01, which is typical for a SNR of 200. For LowNoise_Known there is only a single FITS file for each simulation branch, which means that there is no sum over files j in Eq. 1 (i.e. $j = 1$). So, in the absence of other biases ($m = c = 0$) we would have $Q_l \sim 10^{-4}/\sigma_k^2$, where σ_k is the scatter for a single simulation branch. Therefore $\sigma_k < 3 \times 10^{-4}$ is required to reach the target of $Q_l \sim 1000$ for a given simulation branch. Some methods have $\sigma_k \sim 10^{-3}$ at the smallest galaxy sizes, which will limit their overall Q to around 100.

Key	Method name	Language	Runtime (s/galaxy)	URLs
HB	CVN Fourier	Matlab	1	http://great08challenge.pbworks.com/f/Great-Challenge.zip
AL	CLT KK99	f90	0.4	http://cosmologist.info/utils/StackedShear.zip
TK	Lensfit	C	0.08	http://www.physics.ox.ac.uk/lensfit/ http://www-astro.physics.ox.ac.uk/~tdk/files/lensfit.tar.gz
CH	KSBf90	f90	0.005	http://www.roe.ac.uk/~heymans/KSBf90
PG	gfit	Python	0.2	
MV	KKshapelets with flexion	f77, f95	0.03	
KK	KKshapelets	f77	0.03	http://www.strw.leidenuniv.nl/~kuijken/shear-shapelets.html
HHS	Gauss and variants	Python	0.05	
SB	im2shape	C	0.02	http://www.sarahbridle.net/im2shape/great08_im2shape_v1.0.tar.gz
MJ	BJ02 deconvolved shapelets	C++	0.08	http://www.hep.upenn.edu/~mjarvis/great08/v1.tar.gz
USQMU	unweighted stacked quadrupole moments	Matlab	0.001	www.sarahbridle.net/usqm_v1.0.tar.gz

Table B1. Table providing more details about the methods. This table collates information from the GREAT08 code wiki <http://great08challenge.pbworks.com> on the programming language used, an indicative time taken per galaxy, and associated URLs. These runtimes are only illustrative since they are reproduced as provided by the code authors and no attempt has been made to benchmark or compare the machines used. The TK method takes 0.01 seconds using 8 threads, and these numbers are multiplied to give the number in the table, for ease of comparison with other methods.

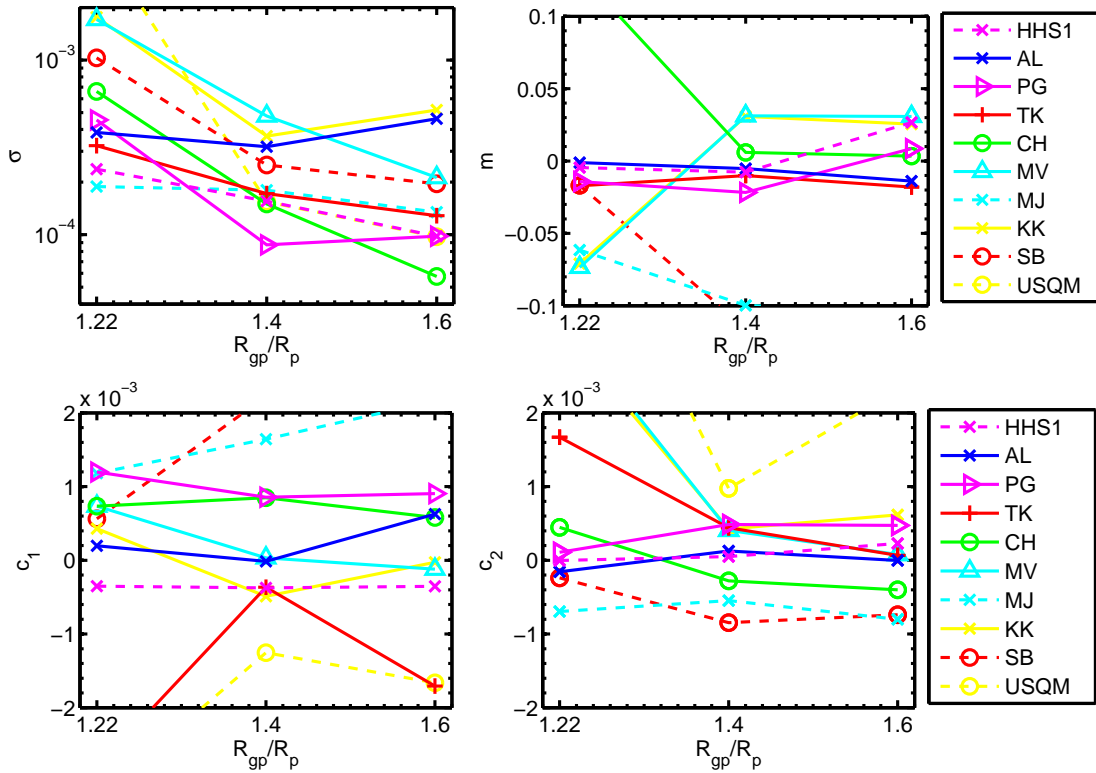


Figure C1. Scatter, multiplicative and additive shear measurement bias as a function of galaxy size for LowNoise_Blind.

C2 RealNoise_Blind

Fig. C2 shows the output shear residuals versus the input shear for the top two methods, for the fiducial simulation branch. This figure illustrates how the multiplicative and additive errors are calculated. The total Q for a given simulation branch is roughly a combination of the slopes and offsets of each best-fit line, and the scatter about the lines. The equivalent point for LowNoise_Blind has only five points on it, and the circles are identical to the crosses.

We show the multiplicative and additive biases in Figs. C3 and C4. The decreased SNR in RealNoise_Blind is compensated for by averaging over many shear values to reduce the noise and ensure that the quality measures Q , m and c can be dominated by systematic biases.

We first consider overall trends in multiplicative and additive biases (Figs. C3 and C4). The “psftype” panels indicate that changes in the PSF had virtually no effect on m but quite a large effect on c . Incorrect estimation of the PSF size tends to cause a multiplicative bias, so given that the PSFs all had roughly the same size, and varied only in ellipticity, this result is not surprising. There is a general tendency for c to be best for the fiducial PSF, positive for the “PSF rot” and negative for “PSF $e \times 2$ ”. This tendency indicates that the participants made the most efforts to model the fiducial PSF, which is used for almost all of the simulations. It would be interesting to compare the observed trend with the result of wrongly assuming the fiducial PSF for the two other PSF branches in case this explains the result.

The scatter of the submitted shears about the best fit line can be seen qualitatively by the range of the circles in Fig. C2, and quantitatively for each simulation branch in Fig. C3. Typical values around 10^{-3} are averaged down in the Q calculation in the average over $j = 1, \dots, 300$ simulations in a given simulation branch which have similar shear values. Therefore $Q_l \sim 300 \times 10^{-4} / \sigma_k^2$, and σ_k should be less than about 5×10^{-3} for all simulation branches to prevent a method with $m = c = 0$ from reaching $Q \sim 1000$. This condition is met by most methods even at the lowest SNR value.

The uncertainties on the multiplicative bias are close to constant with respect to galaxy and PSF type and decrease with increasing SNR and galaxy size. With the exception of USQM, there is little scatter between the groups for a given simulation branch (tens of percent difference), and the smallest uncertainties are obtained by AL and TK. For these methods, since the uncertainty on m is always less than 10^{-2} , we infer that the finite number of simulations is not the dominant reason that every submission departs from zero multiplicative bias for at least one simulation branch. The uncertainties on the additive bias are always less than 2×10^{-4} for the best methods and therefore also do not dominate the biggest departures from perfection.

For the method HB, the multiplicative calibration bias (upper panels, Fig. C3) is very close to constant with simulation branch. The shears are consistently overestimated by about 2 per cent. This bias is above our detailed simplistic requirements for far future experiments, but note that if a method really did have a multiplicative bias that was completely constant with the properties of the simulation or universe, then it would be trivially removed by dividing all shears by the relevant number. The additive calibration bias

for this method is always below our detailed requirement of 0.0003 for far future experiments, except for the “Fid rotated” PSF branch and the low SNR branch. It would be intriguing to know if this could be fixed further by more detailed modeling of the PSF.

The poor performance of AL on the low SNR branch appears to come mostly from a multiplicative bias of nearly 10% (Fig. 5). The results on the most elliptical PSF (“Fid $e \times 2$ ”) are also relatively disappointing, and come from the large additive calibration bias (Fig. 5). This result is consistent with a problem with modeling this particular PSF, in which residual PSF ellipticity remains to add to the true shear.

The good results of MV at high SNR and large galaxy size is largely due to the reduction in multiplicative bias in these regimes. This result could possibly hint at inaccurate modeling of the PSF size.

The poorer performance for smaller galaxy sizes for HHS now seems to come from both an increased multiplicative and additive error. The multiplicative bias increases slightly as a function of galaxy size in LowNoise_Blind but decreases as a function of galaxy size in RealNoise_Blind. Perhaps there is some kind of cancelation between the increasingly negative multiplicative bias as a function of SNR and the large positive multiplicative bias seen in RealNoise_Blind at smaller galaxy sizes. HHS2 and HHS3 used stacking to decrease dependence on the assumed galaxy model. The additive calibration bias is still significant and reduces the overall Q value. The sharp changes in additive calibration bias with PSF type suggest that the PSF is not being sufficiently well modelled.

In STEP2 there was found to be a systematic difference between m_1 and m_2 that was attributed to the different effective pixel scales in the two directions. We have made separate figures for m_1 and m_2 but find them to be visually similar for most methods except CH. Galaxy type variations in general had little effect on m and c overall, a surprising result also found in STEP2.

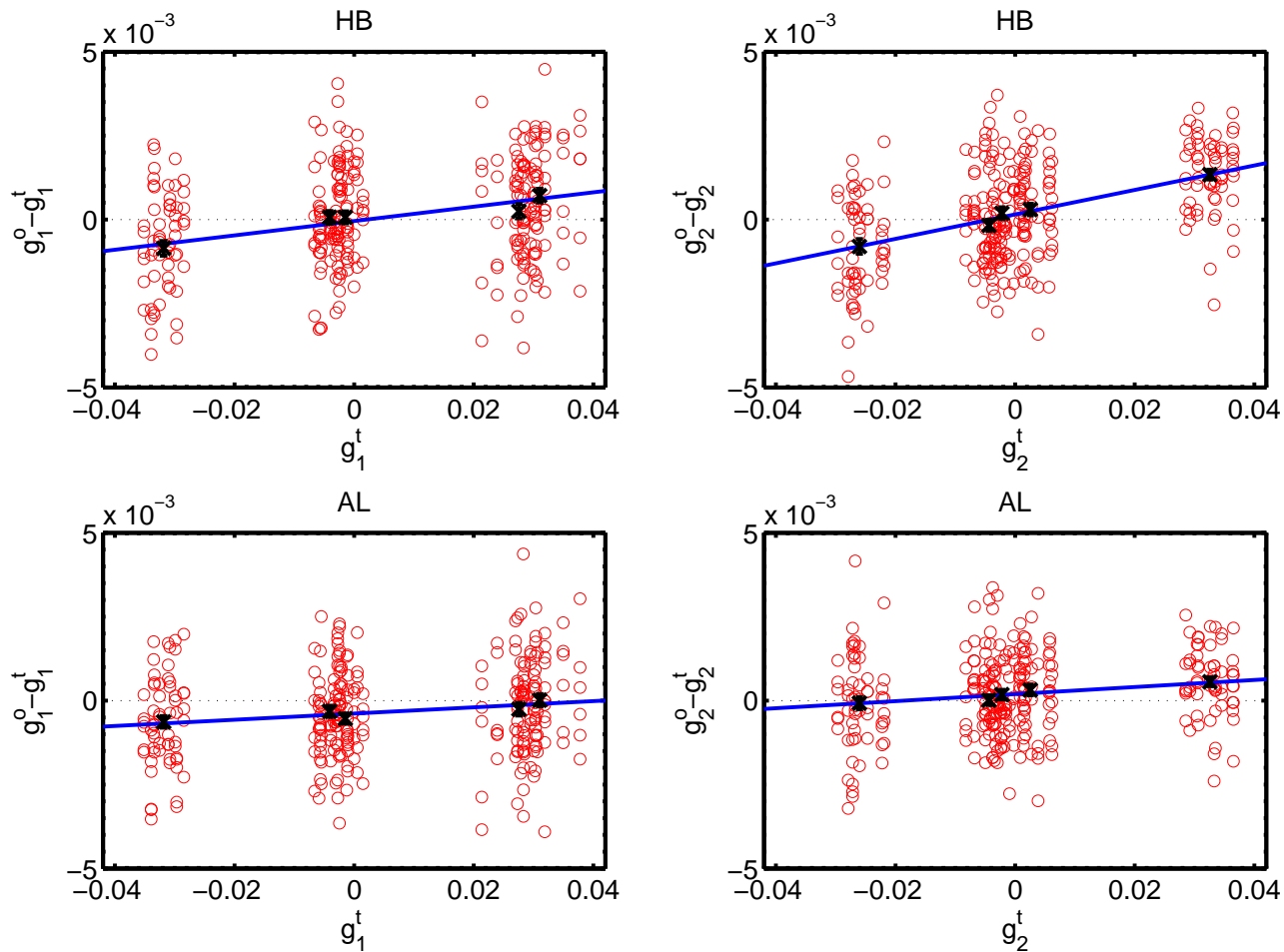


Figure C2. Residual shear versus true shear for shear component 1 (left panels) and shear component 2 (right panels) for the top two methods HB (upper panels) and AL (lower panels). The circles show results for each set in the fiducial simulation branch and the crosses and error bars show the average residual for each root shear value for the fiducial branch.

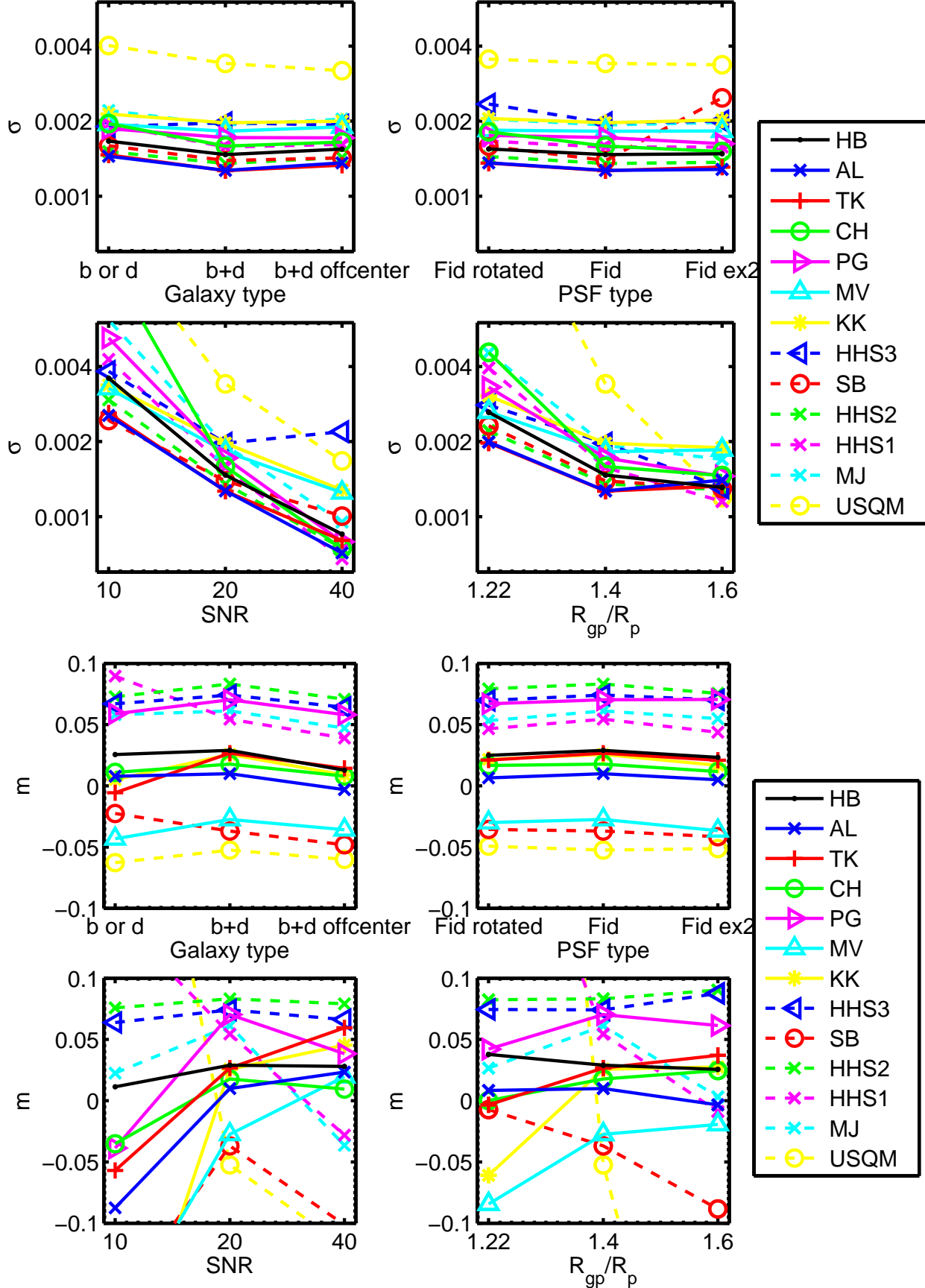


Figure C3. Upper panel: Scatter about a linear fit to output versus input shear. Lower panel: multiplicative shear measurement bias as a function of galaxy size for RealNoise_Blind.

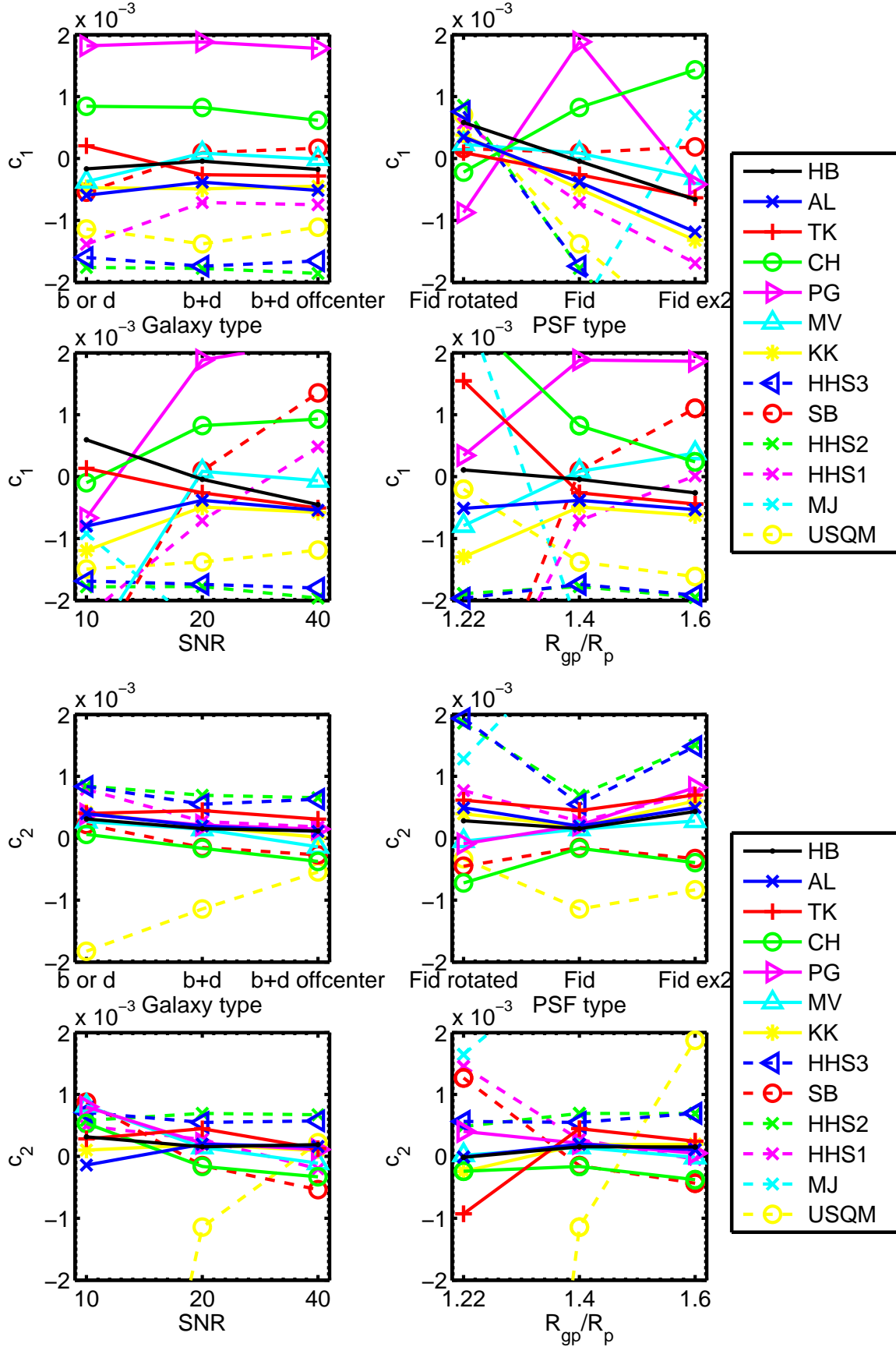


Figure C4. Additive shear measurement bias as a function of galaxy size for RealNoise_Blind.