

Cover Page



Universiteit Leiden

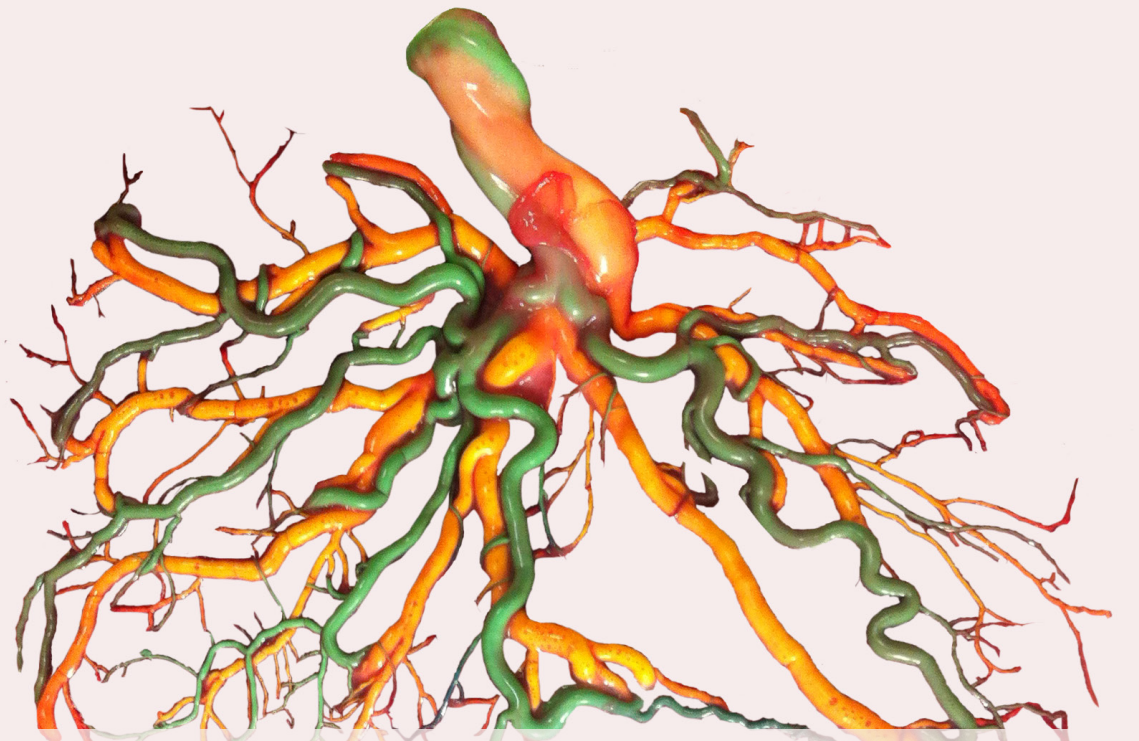


The handle <http://hdl.handle.net/1887/43476> holds various files of this Leiden University dissertation

Author: Villiers, Suzanne de

Title: Placental characteristics in twin-to-twin transfusion syndrome and twin anemia-polycythemia sequence

Issue Date: 2016-10-13



Placental characteristics in twin-to-twin transfusion syndrome and twin anemia-polycythemia sequence

Suzanne F. de Villiers

