

A *Herschel* PACS survey of the dust and gas in Upper Scorpius disks[★]

Geoffrey S. Mathews¹, Christophe Pinte², Gaspard Duchêne^{2,3}, Jonathan P. Williams⁴, and François Ménard^{2,5}

¹ Leiden Observatory, Leiden University, PO Box 9513, 2300 RA Leiden, The Netherlands
e-mail: gmathews@strw.leidenuniv.nl

² CRNS-INSU/UJF-Grenoble 1, Institut de Planétologie et d'Astrophysique de Grenoble (IPAG) UMR 5274, 38041 Grenoble, France

³ Astronomy Department, University of California, Berkeley CA 94720-3411, USA

⁴ Institute for Astronomy, University of Hawaii, 2680 Woodlawn Dr., Honolulu, HI 96826, USA

⁵ UMI-FCA (UMI 3386), CNRS/INSU France and Universidad de Chile, 1058 Santiago, Chile

Received 2 February 2013 / Accepted 8 August 2013

ABSTRACT

We present results of far-infrared photometric observations with *Herschel* PACS of a sample of Upper Scorpius stars, with a detection rate of previously known disk-bearing K and M stars at 70, 100, and 160 μm of 71%, 56%, and 50%, respectively. We fit power-law disk models to the spectral energy distributions of K & M stars with infrared excesses, and have found that while many disks extend in to the sublimation radius, the dust has settled to lower scale heights than in disks of the less evolved Taurus-Auriga population, and have much reduced dust masses. We also conducted *Herschel* PACS observations for far-infrared line emission and JCMT observations for millimeter CO lines. Among B and A stars, 0 of 5 debris disk hosts exhibit gas line emission, and among K and M stars, only 2 of 14 dusty disk hosts are detected. The OI 63 μm and CII 157 μm lines are detected toward [PZ99] J160421.7-213028 and [PBB2002] J161420.3-190648, which were found in millimeter photometry to host two of the most massive dust disks remaining in the region. Comparison of the OI line emission and 63 μm continuum to that of Taurus sources suggests the emission in the former source is dominated by the disk, while in the other there is a significant contribution from a jet. The low dust masses found by disk modeling and low number of gas line detections suggest that few stars in Upper Scorpius retain sufficient quantities of material for giant planet formation. By the age of Upper Scorpius, giant planet formation is essentially complete.

Key words. protoplanetary disks – stars: pre-main sequence – open clusters and associations: individual: Upper Scorpius – circumstellar matter

1. Introduction

Circumstellar disks of gas and dust are the sites of planet formation. They are most readily detected from continuum emission of cool dust at wavelengths from the (near-)infrared to millimeter wavelengths. At least initially, the dust only accounts for 1% of the disk mass, and a more complete understanding of disk structure, chemistry, evolution, and – not least – the formation of giant planets, requires that we measure and accurately interpret the line emission from disks. The interpretation of line data requires a complete understanding of the dust, which establishes the temperature baseline for gas models.

The detection and characterization of disk spectral line emission is far more challenging than observations of the continuum. Due to atmospheric opacity, ground based observations have been restricted to (sub-)millimeter molecular rotational lines in the cold outer disk, where depletion of molecules (i.e. freeze-out onto dust grains) is important and in the near-infrared (NIR) from the hot, central few AU, regions of disks (van Dishoeck 2006).

Several surveys have been conducted using the ESA *Herschel* Space Observatory (Pilbratt et al. 2010) to examine line emission from circumstellar disks. The Water In Star-forming regions with *Herschel* (WISH) guaranteed time key program

focused on high resolution spectroscopy to trace water-related chemistry in objects ranging from collapsing clouds to protoplanetary disks (van Dishoeck et al. 2011). The Dust, Ice, and Gas In Time (DIGIT) open time key project has focused on broad spectral surveys of a smaller number of objects ranging from embedded to the Class II disk stage (e.g. van Kempen et al. 2010).

Two other large surveys have focused on photometry to characterize the dust of circumstellar disks. DUST around NEArby Stars (DUNES), has carried out 100 and 160 μm , and in a few cases, longer wavelength photometry to search for debris disks and proto-Kuiper belts (Eiroa et al. 2013). Disk Emission via a Bias-free Reconnaissance in the Infrared/Submillimeter (DEBRIS) has focused on a photometric survey for debris disks (Mathews et al. 2010).

The Gas in Protoplanetary Systems (GASPS, Dent et al. 2013) *Herschel* open time key project, on the other hand, has focused on a mix of photometry and spectroscopy, with one key goal being to trace the evolution of disk mass. It is the largest circumstellar disk survey carried out with *Herschel*. Using the Photoconductor Array Camera and Spectrometer (PACS, Poglitsch et al. 2010) integral field unit spectrometer and bolometer array, we are surveying nearly 200 young stars in three emission lines, [OI] 63 μm , [OI] 145 μm , and [CII] 158 μm . The GASPS team is modeling the data using a 3 dimensional radiative transfer code MCFOST (Pinte et al. 2006, 2009) and the gas thermal balance and chemistry code

[★] *Herschel* is an ESA space observatory with science instruments provided by European-led Principal Investigator consortia and with important participation from NASA.

ProDiMo (Woitke et al. 2009; Kamp et al. 2010). We have also built a grid of 300 000 disk models (DENT, Woitke et al. 2010; Pinte et al. 2010; Kamp et al. 2011) exploring a variety of disk parameters which has proven a useful tool for analysis of observations.

This survey covers young stars in 6 nearby clusters spanning a range of ages 1–30 Myr. At a distance of 145 pc (de Zeeuw et al. 1999), Upper Scorpius (Upper Sco) is one of the closest sites of recent star formation. At an age of 5 Myr (Preibisch & Zinnecker 1999), it serves as an intermediate age sample for GASPS. However, recent work questions the 5 Myr age of the group. Pecaute et al. (2012) find evidence from examination of B, A, F, and G stars that the age for Upper Scorpius may be ~10 Myr. In our discussion below, we examine the implications either age presents for planet formation.

Whatever the exact age, recent studies have indicated that the disks in Upper Scorpius are greatly evolved. Few stars are still accreting (e.g. Walter et al. 1994; Dahm & Carpenter 2009), suggesting that most disks have depleted their inner disk gas content. *Spitzer* photometry at 4.5 to 70 μm (Carpenter et al. 2006, 2009), as well as spectroscopy (Dahm & Carpenter 2009), revealed that the overall population of Upper Sco disks is more evolved than that in younger star forming regions, with only ~20% of stars exhibiting an infrared excess at any wavelength. Moreover, many of these excesses are consistent with debris disks ($L_{\text{disk}}/L_{\text{star}} < 10^{-2}$, Wyatt 2008) rather than primordial disks. Under the assumption of the primordial 100-to-1 gas-to-dust mass ratio, millimeter photometry indicates that less than 2% of Upper Scorpius disks have sufficient mass to support giant planet formation, and disk masses have become so low as to end the correlation between accretion and NIR excess seen in younger regions (Mathews et al. 2012b).

We have carried out the largest survey to date for far-infrared photometry and gas-line emission from a group of stars in the late stages of disk evolution, attaining a 3σ gas-mass sensitivity of $\sim 1 M_{\text{Jup}}$ and determining the large scale changes in disk geometry. In Sect. 2, we describe our target sample. In Sect. 3, we describe our observations and data reduction, and in Sect. 4, we describe our observational results. In Sect. 5, we model the disks and discuss the improved estimates of their dust characteristics enabled by our observations. We conclude with a discussion of the implications for planet formation and disk evolution in Sect. 6, and summarize our findings in Sect. 7.

2. Sample

The GASPS Upper Scorpius sample emphasizes sources having a NIR excess at 8 or 16 μm in the NIR continuum survey of 218 Upper Sco members of Carpenter et al. (2006). We include a small number of nonexcess sources to both place limits on the number of sources with excesses starting at longer wavelengths and to search for disks with gas line emission but lacking observable dust emission. We observed 8 of the 9 B and A stars with an 8 or 16 μm excess (excluding two known Be stars), all 7 NIR-excess K stars, and all 17 M stars with a NIR-excess. For our control sample, we included 3 B and A, 4 G and K, and 6 M stars with no excess at 8 or 16 μm . In Table 1 we present an overview of the previously determined properties of our sample, including the spectral type, extinction, luminosity, surface temperature, $H\alpha$ equivalent width, and disk classification as Class II, III, or debris disk (using the NIR slope criteria of Greene et al. 1994), and classification as Classical or Weak-line T Tauri star (using the spectral type dependent criteria of White & Basri 2003). We also give each object a number by which it

is referred in the tables and text. In the remainder of the text, we refer to [PBB2002] J161420.3-190648 (object 36) and [PZ99] J160421.7-213028 (object 41) as J1614-1906 and J1604-2130, respectively.

The sources for our spectral types, $H\alpha$ equivalent widths, stellar masses, and disk classifications are described in Mathews et al. (2012b). Luminosity, temperature, and extinction estimates are from Preibisch & Zinnecker (1999), Preibisch et al. (2002), and Hernández et al. (2005).

3. Observations

In the following section, we describe new photometry and spectroscopy of these Upper Scorpius sources, as well as our data reduction. Observations with the *Herschel* Space Observatory’s PACS instrument (Poglitsch et al. 2010) were carried out as part of the *Herschel* open time key project GASPS (P.I. Dent). Additional observations were carried out using the Receiver A and HARP instruments on the *James Clerk Maxwell* Telescope (JCMT). In Table A.1, we report the observation identification numbers (obsid) and settings for *Herschel* observations, as well as the date, instrument, and integration times for JCMT observations.

3.1. PACS photometry

We carried out a full survey of our sample using the *Herschel* PACS instrument’s photometric scan map mode (PacsPhoto). Scans were carried out at the medium scan speed of 20"/s, with 10 legs of 3' length and separations of 4". Targets were observed in both the “blue” passband centered at 70 μm , and the “green” passband centered at 100 μm , with each simultaneously observing in the “red” passband at 160 μm . All but 4 early observations were carried out in a pair of 276 s scan-map observations at 70° and 110°, so as to provide more even coverage of the field of view and reduce smearing of the point spread function in the scan direction.

The data were reduced with HIPE 9.0 (Ott 2010) using the standard reduction pipeline for photometric data. For most objects, there are two scans each in the 70 and 100 μm bands, with a total of 4 accompanying scans in the 160 μm band. For the subset of objects detected at 70 μm with *Spitzer* (Carpenter et al. 2009), there are only two scans in the 100 μm band and 2 scans in the 160 μm band. The scans for each object were reduced separately, with high-pass filtering conducted using a 1σ threshold to mask sources. We then combined separate scans and projected them at 2", 2", and 3", in the 70, 100, and 160 μm bands. These oversample the native PACS pixel scales of 3".2, 3".2, and 6".4, respectively.

We measured the flux in the stacked images using the procedure recommended by the *Herschel* Science Center¹. This is aperture photometry with an aperture radius of 10.5". We used outer sky annuli of 20"–30" in the 70 and 100 μm bands, with aperture corrections of 0.77 and 0.73 based on PACS observations of Vesta. For 160 μm photometry, we used a sky annulus of 30"–40", with an aperture correction of 0.63. We calculated the pixel error, σ_{px} , as the standard deviation of values in the sky annulus, which we then divided by a correlated noise factor. For our pixel sizes, this term is 0.72, 0.72, and 0.57. We assume the noise is background dominated, for which the source flux error was then calculated as $\sigma_{\text{px}} n_{\text{ap}}^{0.5}$, where n_{ap} is the number of pixels within the aperture. We then applied the aperture corrections to

¹ http://herschel.esac.esa.int/twiki/pub/Public/PacsCalibrationWeb/pacs_bolo_fluxcal_report_v1.pdf

Table 1. Target properties.

Object	Name ^a	Sp.Type ^b	A_V	$\log(L)$	$\log(T)$	M_{star}	$W_\lambda(\text{H}\alpha)^c$	SED class	Accretion ^d
			Mags	L_{sun}	K	M_{sun}	Å		
1	HIP 76310	A0V	0.1	1.43	3.960	2.2	<-0.1	debris	No
2	HIP 77815	A5V	0.7	1.06	3.914	2.0	...	none	...
3	HIP 77911	B9V	0.3	1.88	4.050	2.8	<-0.1	debris	No
4	HIP 78099	A0V	0.5	1.43	3.960	2.2	<-0.1	none	No
5	HIP 78996	A9V	0.4	1.10	3.870	1.8	<-0.1	debris	No
6	HIP 79156	A0V	0.5	1.42	3.980	2.2	<-0.1	debris	No
7	HIP 79410	B9V	0.6	1.63	4.020	2.5	<-0.1	debris	No
8	HIP 79439	B9V	0.6	1.65	4.020	2.5	<-0.1	debris	No
9	HIP 79878	A0V	0.0	1.51	3.980	2.3	<-0.1	debris	No
10	HIP 80088	A9V	0.4	0.91	3.880	1.7	<-0.1	debris	No
11	HIP 80130	A9V	0.6	1.20	3.920	1.9	<-0.1	none	No
12	RX J1600.7-2343	M2	0.5	-0.95	3.557	0.5	...	none	...
13	ScoPMS 31	M0.5V	0.9	-0.43	3.570	0.4	-21.06	II	C
14	[PBB2002] J155624.8-222555	M4	1.7	-1.12	3.516	0.3	-5.4, -5.51	II	W
15	[PBB2002] J155706.4-220606	M4	2.0	-1.31	3.513	0.2	-3.6, -9.92	II	W
16	[PBB2002] J155729.9-225843	M4	1.4	-1.30	3.511	0.2	-7.0, -6.91	II	W
17	[PBB2002] J155829.8-231007	M3	1.3	-1.63	3.532	0.3	-250, -158	II	C
18	[PBB2002] J160210.9-200749	M5	0.8	-1.40	3.501	0.2	-3.5	none	W
19	[PBB2002] J160245.4-193037	M5	1.1	-1.31	3.495	0.2	-1.1	none	W
20	[PBB2002] J160357.9-194210	M2	1.7	-0.87	3.546	0.5	-3.0, -2.70	II	W
21	[PBB2002] J160525.5-203539	M5	0.8	-1.30	3.499	0.2	-6.1, -8.61	III	W
22	[PBB2002] J160532.1-193315	M5	0.6	-1.88	3.499	0.1	-26.0, -152	III	C
23	[PBB2002] J160545.4-202308	M2	2.2	-0.98	3.560	0.6	-35.0, -2.04	II	C
24	[PBB2002] J160600.6-195711	M5	0.6	-0.82	3.505	0.3	-7.5, -4.11	II	W
25	[PBB2002] J160622.8-201124	M5	0.2	-1.47	3.499	0.2	-6.0, -3.12	II	W
26	[PBB2002] J160643.8-190805	K6	1.8	-0.31	3.623	0.8	-2.39	III	W
27	[PBB2002] J160702.1-201938	M5	1.0	-1.37	3.501	0.2	-30.0, -8.3	II	C
28	[PBB2002] J160801.4-202741	K8	1.5	-0.45	3.601	0.7	-2.3	none	W
29	[PBB2002] J160823.2-193001	K9	1.5	-0.49	3.586	0.7	-6.0, -2.75	II	W
30	[PBB2002] J160827.5-194904	M5	1.1	-1.11	3.495	0.2	-12.3, -14.5	III	W
31	[PBB2002] J160900.0-190836	M5	0.7	-1.45	3.503	0.2	-15.4, -12.8	II	W
32	[PBB2002] J160900.7-190852	K9	0.8	-0.60	3.592	0.7	-12.7, -20.0	II	C
33	[PBB2002] J160953.6-175446	M3	1.9	-1.03	3.539	0.4	-22.0, -22.2	II	C
34	[PBB2002] J160959.4-180009	M4	0.7	-1.26	3.518	0.3	-4.0, -4.41	II	W
35	[PBB2002] J161115.3-175721	M1	1.6	-0.42	3.574	0.6	-2.4, -4.47	II	W
36 ^e	[PBB2002] J161420.3-190648	K5	1.8	-0.59	3.630	0.8	-52.0, -43.7	II	C
37	[PZ99] J153557.8-232405	K3	0.7	-0.12	3.649	0.9	0.0	none	W
38	[PZ99] J154413.4-252258	M1	0.6	-0.43	3.564	0.4	-3.15	none	W
39	[PZ99] J160108.0-211318	M0	0.0	-0.36	3.576	0.4	-2.4	none	W
40	[PZ99] J160357.6-203105	K5	0.9	-0.24	3.630	0.8	-11.57	II	C
41 ^f	[PZ99] J160421.7-213028	K2	1.0	-0.12	3.658	1.0	-0.57	II	W
42	[PZ99] J160654.4-241610	M3	0.0	-0.34	3.538	1.0	-3.62	none	W
43	[PZ99] J160856.7-203346	K5	1.4	-0.11	3.630	0.7	-0.47	none	W
44	[PZ99] J161402.1-230101	G4	2.0	0.30	3.724	1.5	0.0	none	No
45	[PZ99] J161411.0-230536	K0	2.4	0.74	3.676	1.0	0.96, 0.8, 0.38	II	W

Notes. ^(a) Names with [PZ99] indicate naming based on [Preibisch & Zinnecker \(1999\)](#), and [PBB2002] indicates naming based on [Preibisch et al. \(2002\)](#). ^(b) Spectral types from [Hernández et al. \(2005\)](#); [Preibisch et al. \(1998, 2002\)](#). ^(c) $W_\lambda(\text{H}\alpha)$ from [Hernández et al. \(2005\)](#); [Preibisch et al. \(1998, 2002\)](#); [Riaz et al. \(2006\)](#). ^(d) Accretion determinations from [Mathews et al. \(2012b\)](#). For A and G stars, this indicates whether the star has detectable H α emission possibly tracing accretion. For K & M stars, this indicates whether the star exhibits strong enough H α emission to be classified as accreting according to the spectral type dependent criteria of [White & Basri \(2003\)](#). Objects with no H α measurement in the literature are shown with no value. ^(e) Referred to as J1614-1906 in the text. ^(f) Referred to as J1604-2130 in the text.

our error measurements. There are additional flux calibration errors of 3, 3, and 5% at 70, 100, and 160 μm , respectively, which we do not include in our reported errors.

3.2. PACS spectroscopy

We used the PACS integrated field unit, which consists of a 5×5 filled array of $9''.4 \times 9''.4$ spaxels, to carry out spectroscopic observations of 5 B and A stars, 5 K stars, and 9 M stars with NIR excesses. Observations were carried out in chop-nod

mode in order to remove the telescope emission, with the central spaxel centered on the target in both nods. We carried out PacsLineSpec observations of these 19 spectroscopic targets, which includes simultaneous observations from 62.94–63.44 and 188.79–190.32 μm .

We also carried out PacsRangeSpec observations of 4 K stars and 3 M stars with either detected millimeter continuum or strong infrared excess emission. These observations consisted of simultaneous observations from 71.82–73.31 and 143.62–146.61 μm , followed by simultaneous observations

at 78.38–79.72 and 156.73–159.44 μm . One source, J1604-2130 (object 41), was also observed at 89.30–90.71 and 178.61–181.36 μm .

We used the standard PACS spectroscopy reduction pipeline within HIPE 9 to reduce the data, with the addition of flags in intermediate steps to preserve information regarding the random error within wavelength bins.

For each spaxel, we extracted the A and B nods. For each nod, we then binned the data in wavelength with nonoverlapping bins half the width of the instrumental resolution. The mean of the two nods restores the observed flux in each spaxel, and we propagate the errors of the individual nods to determine the error-per-bin in the final spectrum. We note that due to telescope roll, off-center spaxels do not see the exact same location on sky between nods. At the corners of the IFU, these offsets can be as large as 2". Despite these offsets, the off-center spaxels are useful for checking for extended emission or potentially contaminating sources.

For point source flux measurements, we use the flux in the central spaxel and apply wavelength dependent flux and aperture corrections released by the PACS development team², as well as their reported flux calibration uncertainty of 30%. These aperture corrections are considered valid for well centered sources, and the flux calibration uncertainty includes the effects of pointing uncertainty. As a check, we compare the reported position on sky of the central spaxel with the target positions. These offsets are generally smaller than the 1σ pointing uncertainty of 2".

To extract line fluxes and measure continuum fluxes from our reduced, nod-combined, flux corrected spectra, we carried out an inverse-error weighted fit of a Gaussian and first-order polynomial to the spectra, attempting fits to the wavelengths of species listed in Table 2. The primary targets of our survey are listed in bold type, and few of these emission lines are detected. For each line region, we also list the instrumental full width at half maximum (FWHM) and aperture correction. Using the polynomial fit to each spectral region, we estimated the continuum emission at the rest wavelength for each line. To estimate the error on the continuum, we calculated the error of the mean for the residual of the polynomial fit in a region from 2 to 10 instrumental FWHM from the line rest wavelength. For emission lines, we calculate the flux of detected lines as the integrated flux of the Gaussian line fit. We calculate 1σ fluxes as the integral of a Gaussian with height equal to the continuum rms, and width equal to the instrumental FWHM.

The spectral resolution at 63 μm is $R = 3400$, while longer wavelength observations have a resolution $R \sim 1500$. Typical continuum rms for our LineSpec observations at 63 and 190 μm are ~ 0.2 – 0.4 Jy, and ~ 0.05 – 0.1 Jy for our RangeSpec observations. These result in line flux uncertainties of 1 – 3×10^{-18} W/m², and errors on the mean continuum value of ~ 10 – 50 mJy.

3.3. JCMT spectroscopy

We also observed a subset of our sample for (sub)millimeter CO emission with the JCMT. These observations were a mix of CO $J = 3$ – 2 observations using HARP and observations for CO $J = 2$ – 1 using Receiver A (RxA).

HARP is a 4×4 heterodyne array operating in the ~ 350 GHz atmospheric window, which allows for simultaneous sampling

Table 2. Transitions observed with PACS.

Species	Transition	Wave μm	FWHM μm	Ap. corr.
Line scan				
[OI]	3P1–3P2	63.1837	0.0184	0.70
o-H ₂ O	8 ₁ 8–7 ₀ 7	63.3236		
DCO+	–	189.57	0.118	0.41
Range scan				
o-H ₂ O	7 ₀ 7–6 ₁ 6	71.9460	0.0391	0.70
CH+	5–4	72.1870		
CO	36–35	72.8429		
o-H ₂ O	4 ₂ 3–3 ₁ 2	78.7414	0.0386	0.70
OH 1/2–3/2 ^a	1/2–3/2+ 1–2	79.1173		
OH 1/2–3/2	1/2–3/2+ 0–1	79.1180		
OH 1/2–3/2 ^a	1/2+–3/2–1–2	79.18173		
OH 1/2–3/2	1/2+–3/2–0–1	79.1809		
CO	33–32	79.3598		
p-H ₂ O	4 ₁ 3–3 ₂ 2	144.5181	0.125	0.56
CO	18–17	144.7842		
[OI]	3P0–3P1	145.5254		
[CII]	2P3/2–2P1/2	157.7409	0.126	0.51
p-H ₂ O	3 ₃ 1–4 ₀ 4	158.3090		
Extended range scan (J1604-2130 only)				
p-H ₂ O	3 ₂ 2–2 ₁ 1	89.9878	0.0362	0.69
CH+	4–3	90.0731		
CO	29–28	90.1630		
o-H₂O	2₁2–1₀1	179.5265	0.122	0.44
CH+	2–1	179.61		
o-H ₂ O	2 ₂ 1–2 ₁ 2	180.4880		
o-H ₂ ¹⁸ O	2 ₁ 2–1 ₀ 1	181.051		

Notes. Bold text indicates the primary targets of our spectroscopic survey. ^(a) Blended with nearby line at instrumental resolution.

of the targets and their large scale environs. Observations were done in an on-off mode, centering the targets in the 14" FWHM beam of a single receiver and using a 60" offset for background subtraction. HARP observations were carried out under conditions with a typical $\tau_{225 \text{ GHz}} \sim 0.1$ – 0.2 . Calibration was carried out hourly on nearby bright line sources known to have low-variability in line strength and line shape.

RxA is a single heterodyne detector with a 21" FWHM beam operating in the 230 GHz atmospheric window. RxA observations were carried out in queue mode under conditions of $\tau_{225 \text{ GHz}} \sim 0.3$, with hourly calibration observations of bright line sources.

The data were reduced using standard routines in the Starlink Kappa and Smurf packages, the facility data reduction tools. We binned data to a 0.25 km s^{-1} resolution. Fluxes were converted from antenna temperature to Jy according to the formula $F_{\nu} = (2kT)/(A\eta)$, where k is the Boltzmann constant, T is the antenna temperature, A is the telescope area, and η is the aperture efficiency. We used reported aperture efficiencies from JCMT documentation³ of 0.63 at 230 GHz and 0.56 at 345 GHz. Typical continuum rms for both the CO 2–1 and CO 3–2 regions are ~ 1 – 1.5 Jy in 0.25 km/s wide channels.

² http://herschel.esac.esa.int/twiki/pub/Public/PacsCalibrationWeb/PacsSpectroscopyPerformanceAndCalibration_v2_4.pdf

³ http://docs.jach.hawaii.edu/JCMT/OVERVIEW/tel_overview/

Table 3. Line fluxes.

Object	[OI] 63.2 μm 10^{-18} W/m ²	CO 72.8 μm 10^{-18} W/m ²	CO 79.4 μm 10^{-18} W/m ²	[OI] 145.5 μm 10^{-18} W/m ²	[CII] 157.7 μm 10^{-18} W/m ²	CO $J = 3-2$ 10^{-20} W/m ²	CO $J = 2-1$ 10^{-20} W/m ²
1	<13.1	<1.5
2	<2.9	<2.8
3	<5.7	<3.1	...
8	<8.6
9	<6.2
10	<6.5
11	<3.6
12	<13.4
13	<10.4	<9.0	<8.5	<2.4	<3.2	...	<3.8
15	<3.0	...
16	<5.6
17	<11.5	<3.0
18	<3.1	...
19	<5.9	...
20	<7.9
21	<5.3	...
22	<15.2
23	<7.1	<7.2	<12.0	<4.1	<3.0	...	<3.3
24	<8.3
29	<9.5	<6.6	<10.2	<2.7	<3.0	...	<1.8
31	<4.4
34	<8.5	<7.6	<10.0	<2.5	<3.0	...	<4.2
36	46.3 \pm 4.4	<7.0	<10.0 ^a	<3.7 ^b	5.1 \pm 1.5	...	<2.1
37	<3.0	<4.2
38	<3.0	...
39	<3.0	...
40	<9.8	<8.6	<8.8	<2.6	<2.8	<4.9	<3.6
41	28.6 \pm 1.9	<11.2	<13.5	<3.6	5.9 \pm 1.7	6.5 \pm 1.5	25.0 \pm 0.9
45	<7.8	<1.6

Notes. ^(a) Blended OH lines are marginally detected at 79.1 μm in this band, with a combined flux of $(6.6 \pm 2.8) \times 10^{-18}$ W/m². ^(b) The CO $J = 18-17$ line is marginally detected in this band, with a flux of $(3.4 \pm 1.2) \times 10^{-18}$ W/m².

4. Results

4.1. Spectroscopy

Two sources, J1614-1906 and J1604-2130, are detected in [OI] and [CII] emission, though neither source is resolved at the 90–200 km s⁻¹ resolution of the PACS instrument. An additional 6 sources are detected in the 63 μm continuum. In addition, J1614-1906 is marginally detected in both the CO $J = 18-17$ and the OH 79.1 μm lines. We list line fluxes in Table 3, and mean continuum fluxes and error on the mean in Table 4. We report nondetections as 3σ upper limits, and we show our continuum subtracted line detections in Fig. 1. Our reported errors and upper limits do not include the calibration uncertainties.

Our IFU observations allow us to check for large scale extended emission over the entire $\sim 45'' \times 45''$ field of view. Some extended emission in the [CII] line may be present in the off-source spaxels of object 34, but not at the source location itself. Off-source emission is also detected at the $\sim 3\sigma$ level in two and three spaxels at large separations (18''–25'') toward J1604-2130 and J1614-1906, respectively. Maps of the [CII] 157.7 μm emission toward these sources is shown in Appendix B.

For our JCMT observations, only J1604-2130 is detected. Assuming a FWHM of 1 km s⁻¹ for nondetected sources, we find typical line flux uncertainties of 1.3×10^{-20} W/m². Integrated line strength and 3σ upper limits are included in Table 3.

4.2. Photometry

In the PACS blue passband at 70 μm , we detect 4/8 B&A stars, 2/6 G&K stars, and 8/21 M stars. In our later analysis, we

include 70 μm photometry of 3, 5, and 2 stars in each of these categories that were previously detected in *Spitzer* MIPS band 2 observations, and were therefore not observed in the PACS blue passband. At 100 μm , we detect 2/5 B&A stars, 7/11 G&K stars, and 6/17 M stars, and at 160 μm , we detect 2/11 B&A stars, 6/11 G&K stars, and 6/23 M stars. As none of our observations are sensitive enough to detect the stellar photosphere, all detections represent circumstellar disks, either primordial or debris.

We list our photometry in Table 4, including 1σ errors or 3σ upper limits. Our reported errors and upper limits do not include the calibration uncertainties. In general, the center of emission of PACS emission lies within the 2'' positional uncertainty of the observations. However, the 70 and 100 μm emission for HIP 77911 is centered at a position $\sim 8''$ to the northwest of the stellar position. This star is known to have a distant companion with a separation of 8'' (Kouwenhoven et al. 2007), suggesting the previously identified excess seen here is not a debris disk around HIP 77911, but a disk around the companion star.

Several stars (objects 13, 29, 34, 36, and 40) show factor of ~ 2 discrepancies in continuum values between neighboring spectral regions. While these differences are consistent at the 2σ level when considering the calibration uncertainty of 30%, they motivate us to make no further use here of the continuum values derived from the spectroscopic observations.

4.3. Spectral energy distributions

We constructed spectral energy distributions (SEDs) using optical, 2MASS, and *Spitzer* photometry from the literature and

Table 4. Continuum measurements.

Object	63 mJy	70 mJy	72 mJy	79 mJy	100 mJy	145 mJy	158 mJy	160 mJy	190 mJy
1	472 ± 52	373.1 ± 11.3 ^a	354.9 ± 6.8	159.7 ± 27.3	197 ± 72
2	...	<15.3	<63.6	...
3	<105	<41.4	<22.8	<72.6	<158
4	...	<15.9	<59.4	...
5	...	14.0 ± 3.6	<58.2	...
6	...	<12.9	<46.8	...
7	...	14.3 ± 5.6	<79.2	...
8	<105	<10.5	<48.6	<228
9	<75	<47.7 ^a	<18.9	<77.4	<117
10	118 ± 26	79.2 ± 13.8 ^a	75.8 ± 5.9	72.2 ± 24.6	<89
11	...	<16.8	<17.1	<65.4	...
12	<162	<9.3	<47.1	<317
13	134 ± 41	296.7 ± 11.5 ^a	149 ± 22	127 ± 26	252.3 ± 7.1	117 ± 8	87 ± 13	171.8 ± 24.1	<111
14	...	<14.1	<18.3	<62.7	...
15	...	<15.6	<16.5	<64.8	...
16	<66	<16.2	<18.9	<45.9	<104
17	<141	16.9 ± 6.3	37.4 ± 7.5	46.4 ± 19.1	...
18	...	<19.8	<72.9	...
19	...	<16.2	<83.7	...
20	<96	69.3 ± 5.6	96.6 ± 24.5	<152
21	...	<16.2	<16.8	<51.3	...
22	<183	<20.4	<23.1	<58.2	<329
23	<87	56.7 ± 5.8	<54	<114	78.7 ± 6.2	122 ± 14	101 ± 12	60.3 ± 19.8	<145
24	<99	<16.5	<20.7	<49.2	<214
25	...	44.0 ± 5.1	30.4 ± 6.9	50.5 ± 23.5	...
26	...	18.3 ± 5.1	15.4 ± 5.9	<63.3	...
27	...	<18.9	<23.1	<59.4	...
28	...	<17.7	<21.3	<54	...
29	249 ± 38	99.9 ± 10.7 ^a	82 ± 17	267 ± 32	150.4 ± 5.7	182 ± 9	271 ± 12	191.7 ± 29.3	213 ± 53
30	...	18.2 ± 5.7	<20.1	<58.2	...
31	...	50.2 ± 7.8	41.1 ± 8.9	<86.1	...
32	...	306.1 ± 6.7	355.6 ± 6.3	397.4 ± 24.9	...
33	...	18.6 ± 5.2	<18.9	<61.5	...
34	146 ± 34	127.6 ± 15.2 ^a	239 ± 19	<93	110.1 ± 6.4	69 ± 8	103 ± 12	106.2 ± 23.2	<152
35	...	13.3 ± 3.5	<13.2	<47.1	...
36	1134 ± 39	668.3 ± 25.2 ^a	1110 ± 18	964 ± 31	749.7 ± 8.4	625 ± 12	689 ± 15	691.6 ± 7.9	521 ± 70
37	...	<13.2	<21.3	<51.3	...
38	...	<14.1	<19.8	<60.0	...
39	...	<17.7	<83.4	...
40	209 ± 39	187.8 ± 12.7 ^a	<63	127 ± 27	172.6 ± 7.0	43.0 ± 9.0	60 ± 11	95.8 ± 25.1	137 ± 21
41	1775 ± 22	1917.4 ± 24.8 ^a	2061 ± 28	2218 ± 42	3221.9 ± 7.4	3126 ± 12	3639 ± 18	3796.7 ± 25.4	3439 ± 49
42	...	<18.9	<18.9	<61.8	...
43	...	<16.5	<19.5	<64.5	...
44	...	<19.2	<17.7	<57.0	...
45	<93	91.1 ± 11.7 ^a	87.7 ± 6.9	63.2 ± 27.9	<125

Notes. ^(a) 70 μm flux reported in [Carpenter et al. \(2009\)](#).

adopt uncertainties as described in [Mathews et al. \(2012b\)](#). We incorporated 3.4, 4.6, 11.6, and 22 μm photometry from the WISE Preliminary Data Release ([Cutri et al. 2011](#)), using the zero magnitude fluxes of [Wright et al. \(2010\)](#) to convert from magnitudes to Jansky. We include the *Spitzer* IRS spectroscopy of [Dahm & Carpenter \(2009\)](#), covering a wavelength range from 5 to 35 μm , and bin the spectra as in [Furlan et al. \(2006\)](#). We also include reported millimeter fluxes at 1.2 and 1.3 mm from ([Mathews et al. 2012b](#), and references therein), and the 880 μm flux for J1604-2130 reported in [Mathews et al. \(2012a\)](#).

We show nondetections as 3σ upper limits. We assume large calibration uncertainty (40%) for the optical photometry, which is largely drawn from scans of photographic plates. For 2MASS photometry, we assume 15% calibration uncertainty due

to unknown NIR variability of the sources. For *Spitzer* IRAC and IRS peak-up photometry, we assume 10 and 20% errors, respectively. For the binned IRS spectra, we assume 10% uncertainty, as in [Furlan et al. \(2006\)](#). For WISE bands 1–4 at wavelengths of 3.4, 4.6, 11.6, and 22.1 μm , respectively, [Jarrett et al. \(2011\)](#) report calibration uncertainties of 2.4%, 2.8%, 4.5%, and 5.7%. However, in order to prevent these points from dominating our model fitting (discussed below), we adopt a minimum calibration uncertainty of 10%.

Stellar radius estimates based on temperature and luminosity estimates from the literature ([Hernández et al. 2005](#); [Preibisch et al. 1998](#), PBB2002) led to poor scaling of the stellar photosphere models. As the stellar luminosity is particularly crucial to our later disk modeling, we have carried out new estimates of the

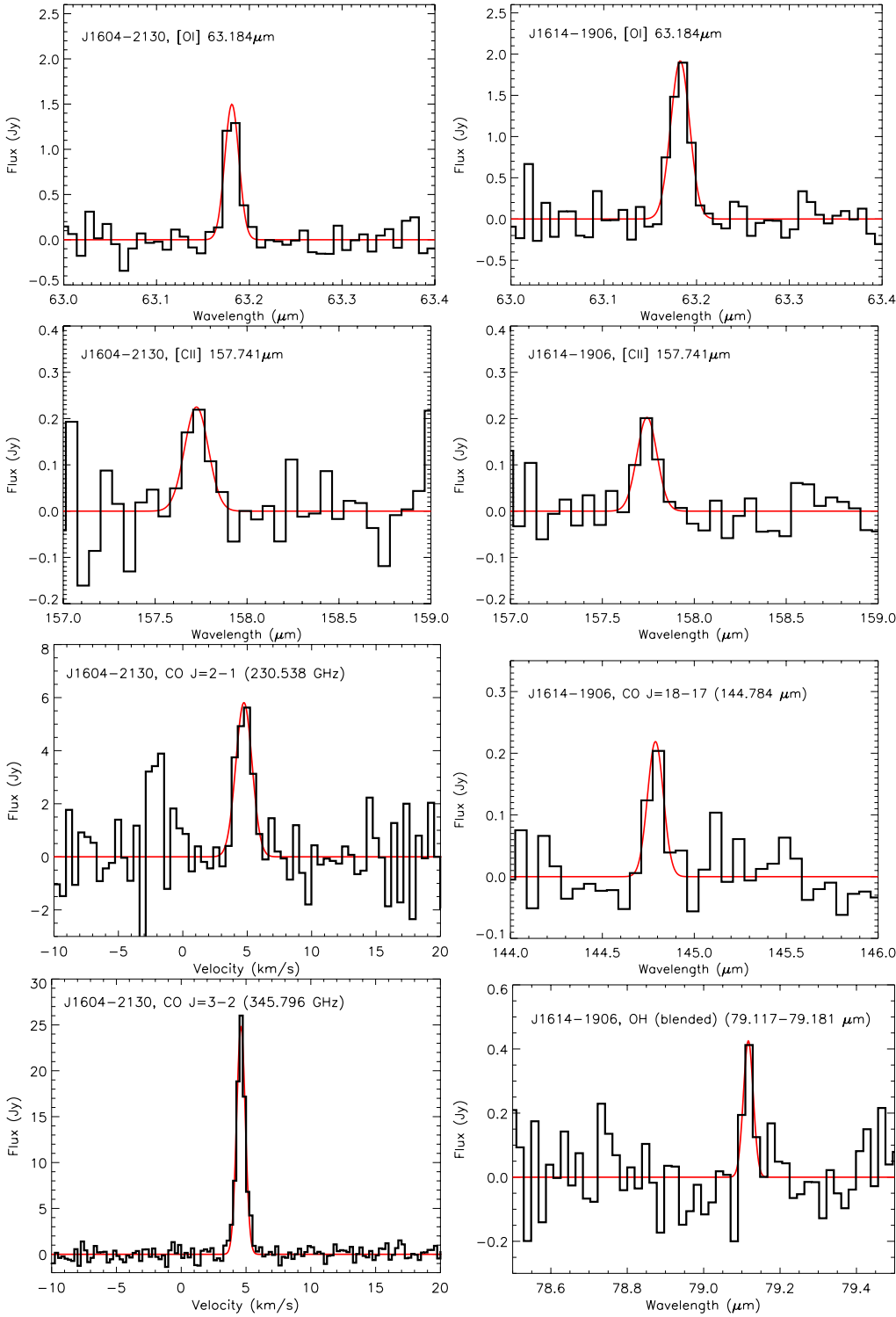


Fig. 1. Continuum subtracted spectra of detected emission lines are shown in black. Gaussian fits are overlaid in red.

stellar radius and extinction of the disk-bearing sources modeled below.

We simultaneously fit the stellar radius and extinction using broadband photometry from B to H band. We assume a stellar distance of 145 ± 20 pc, following parallax measurements of the distribution of high mass members (de Zeeuw et al. 1999; de Bruijne 1999). The stellar radius and distance are degenerate in the photospheric fitting, requiring that one parameter be fixed using external information. While the measured effective temperatures could be used with stellar isochrones to select a

stellar radius, the uncertain ages and large variations between isochrones make that approach far more uncertain. Though many sources appear to the eye to have photospheric K band emission, we omit this band from the fitting procedure as it could be potentially contaminated at small levels by dust at the sublimation radius. Using effective temperatures (T_{eff}) from the literature, with typical uncertainties of 100 K, we select a closest match photospheric model (Kurucz 1993). We also use the $R = 3.1$ reddening law of Fitzpatrick (1999) to deredden photometry.

Table 5. Stellar and disk properties.

Object	A_V mags	R_{star} R_{sun}	R_{in} AU	α	M_{dust} $10^{-6} M_{\text{sun}}$	H_{100} AU	β	χ^2	Degrees of freedom
13	0.2	1.47	1.586	-0.734	2.0	12.7	1.12	109.5	24
14	0.9	0.76	0.032	-1.763	0.011	14.8	1.14	18.1	11
15	1.1	0.58	0.032	-1.791	7.8	5.0	1.08	8.7	11
16	1.1	0.67	0.030	-1.250	1.0	4.7	1.13	17.5	9
17	0.0	0.53	0.158	-0.835	2.6	6.5	1.12	100.5	20
20	0.4	0.79	0.030	-0.597	1.1	8.8	1.13	54.2	23
21	0.8	0.71	0.048	-1.733	0.051	3.3	1.21	14.1	9
22	0.4	0.54	0.033	-1.855	9.6	3.4	1.02	67.7	23
23	0.1	0.73	0.067	-1.199	4.0	9.3	1.22	15.4	9
24	0.4	0.87	0.038	-1.961	9.4	2.0	1.11	52.6	21
25	0.1	0.69	0.400	-0.913	4.3	5.6	1.22	48.2	22
26	0.7	1.17	0.032	-0.337	0.072	3.3	1.19	31.3	22
27	0.4	0.56	0.030	-1.528	6.6	7.8	1.15	33.3	23
29	0.4	1.01	0.031	-1.602	74	7.6	1.15	36.2	23
30	0.8	0.88	0.059	-1.754	0.46	2.5	1.11	22.0	23
31	0.7	0.75	0.040	-0.567	2.0	18.8	1.25	51.0	23
32	0.8	1.25	1.333	-0.914	39	5.8	1.13	232.8	25
33	2.0	0.58	0.031	-1.177	1.1	9.3	1.18	15.9	23
34	1.3	1.01	0.689	-0.647	3.5	16.1	1.15	91.4	22
35	0.0	1.20	0.094	-1.275	0.041	10.9	1.11	45.2	24
40	1.0	1.43	0.033	-1.681	2.8	9.6	1.13	147.0	25
45	1.3	2.24	0.201	-0.847	1.0	3.0	1.05	45.9	23
Upper Scorpius median ^a	–	0.79	0.041	-1.433	2.9	7.26	1.16	23.7	10
Taurus median ^a	–	0.79	0.044	-1.41	540	9.2	1.07	26.7	6

Notes. ^(a) Adopted stellar properties are those of J1603-1942, an Upper Scorpius M2 star at the mid-range of the stellar mass and luminosity of disk bearing sources.

Then, we carry out a χ^2 minimization of the stellar radius and extinction using the Levenburg-Marquardt algorithm, as implemented in the IDL code MPFIT (Markwardt 2009). Results of our fits for the extinction and stellar radius, are listed in Table 5, along with our later disk modeling results. We present the total χ^2 value for each object.

We show the SEDs of all members of our sample in Figs. 2 and 3, along with best fit models to the disk bearing K and M stars (discussed below). All of our B&A stars exhibit photometry or line fluxes consistent with being debris disk hosts or stars with no disk. Therefore, while we present observational results for these objects, we do not include them in our modeling and discussion (Sects. 5 and 6), which focuses on potentially planet forming K&M star disks.

5. Dust models

To better constrain the dust content of the Upper Scorpius disks around K and M stars, we fit dust models to our SEDs using the radiative transfer code MCFOST (Pinte et al. 2006, 2009). We parameterize the radial surface density profile $\Sigma(R)$ of each object using the following simple geometry (e.g. Hartmann et al. 1998):

$$\Sigma(R) = \Sigma_{100} \left(\frac{R}{100 \text{ AU}} \right)^\alpha, \quad (1)$$

where Σ_{100} is the surface density at 100 AU, and α describes the surface density variation of the disk. Σ_{100} is calculated by solving the relation:

$$M_{\text{dust}} = \int_{R_{\text{in}}}^{R_{\text{out}}} 2\pi R \Sigma(R) dR. \quad (2)$$

The dust mass (M_{dust}), disk inner radius (R_{in}), and surface density profile (α) are free parameters, and the outer radius (R_{out}) is set to 100 AU, as the far-infrared SED is insensitive to the outer disk radius. Five of the modeled objects are detected in millimeter emission (objects 13, 23, 29, 32, and 45), and thus may be sensitive to the choice of R_{out} . However, we do not allow this parameter to vary, choosing instead to emphasize fits to infrared emission.

The vertical dust distribution is modeled as a Gaussian with scale height:

$$H(R) = H_{100}(R/100 \text{ AU})^\beta, \quad (3)$$

where H_{100} is the scale height at 100 AU and β describes the power-law disk flaring. For the dust properties, we adopt the silicate grain mineralogy of Draine (2006) with a minimum grain size of 0.01 μm . Following Draine (2006), we fix the exponent of the power law grain size distribution at -3.5 and the maximum grain size at 3.6 mm, three times the longest wavelength at which Upper Scorpius disks have been detected (with the exception of J1604-2130, which has been detected at 3 mm). We must note, however, that most sources are not detected at this wavelength, and thus the modeling is most strongly affected by smaller grains that dominate emission at shorter wavelengths. For the case of a smaller a_{max} , the modeled dust mass is scaled down by a factor of $\sqrt{a_{\text{max}}/3600 \mu\text{m}}$, where a_{max} may be reasonably set to three times the longest detected wavelength. Therefore, for our objects lacking a detection at mm-wavelengths, the dust mass listed in Table 5 should be treated as an upper limit.

We use a genetic algorithm (henceforth GA) to explore these 5 free disk parameters (M_{dust} , R_{in} , α , H_{100} , and β). In Table 6, we show the ranges explored for each parameter, with variations noted below.

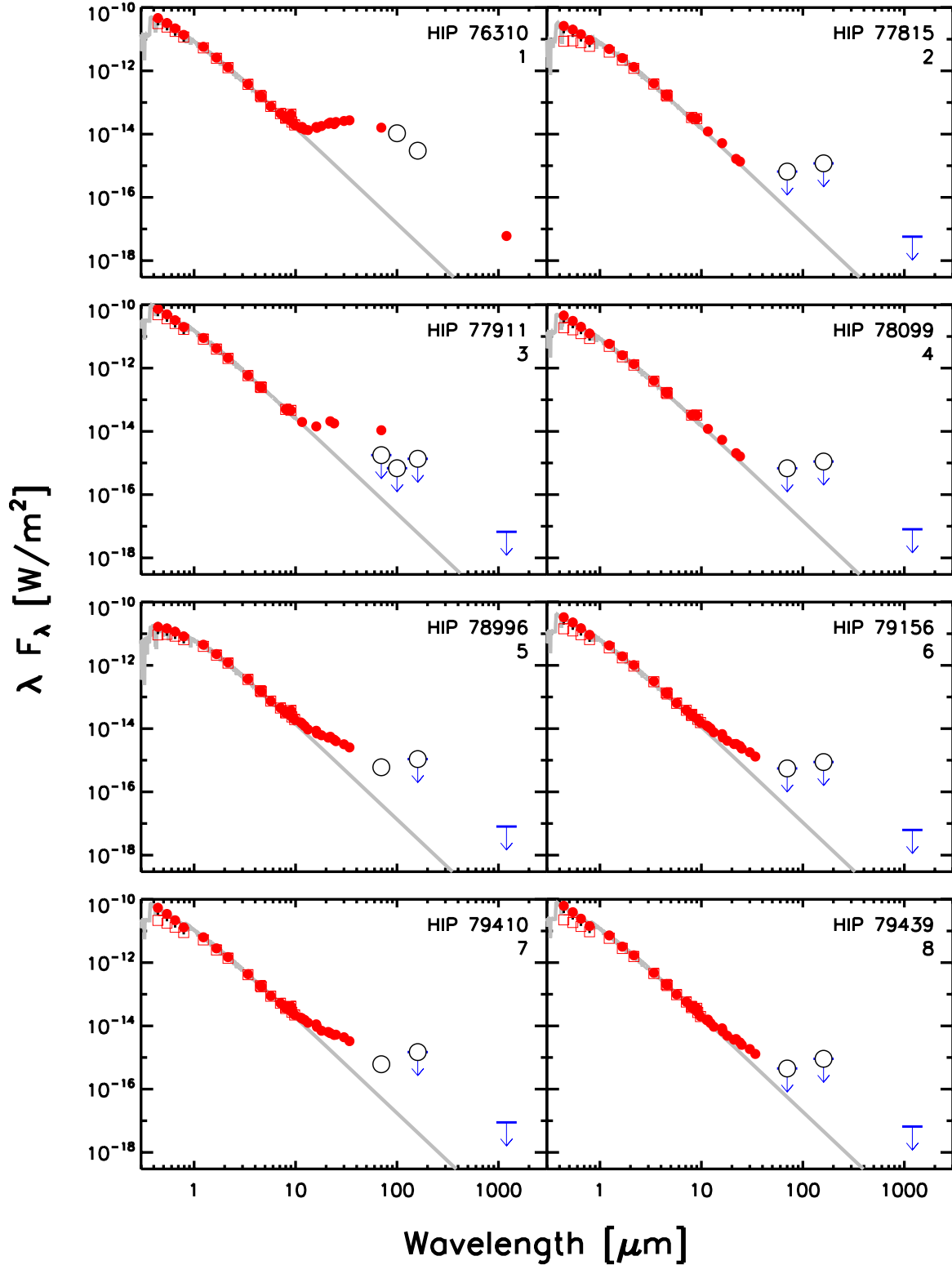


Fig. 2. Spectral energy distributions for Upper Sco sources. Dereddened photometry is shown as red circles, while original data is shown as open red squares. PACS photometry is marked with open black circles, and 3σ upper limits are shown as flat lines with downward facing arrows. Stellar photospheres are shown as gray lines. We have omitted upper limits when they have been superseded by a new observation at the same wavelength. HIP 77911 is not detected in PACS photometry. 70 and 100 μm emission is detected at the location of a nearby companion ($8''$), suggesting past photometry may originate at that source.

The GA carries out an iterative search for the lowest χ^2 region of the parameter space. For each object, we generate 20 generations of models. In the first generation,

100 disk models are generated using disk parameters uniformly selected from within the ranges shown in Table 6. The χ^2 values for each model are then calculated, and a model is selected to be

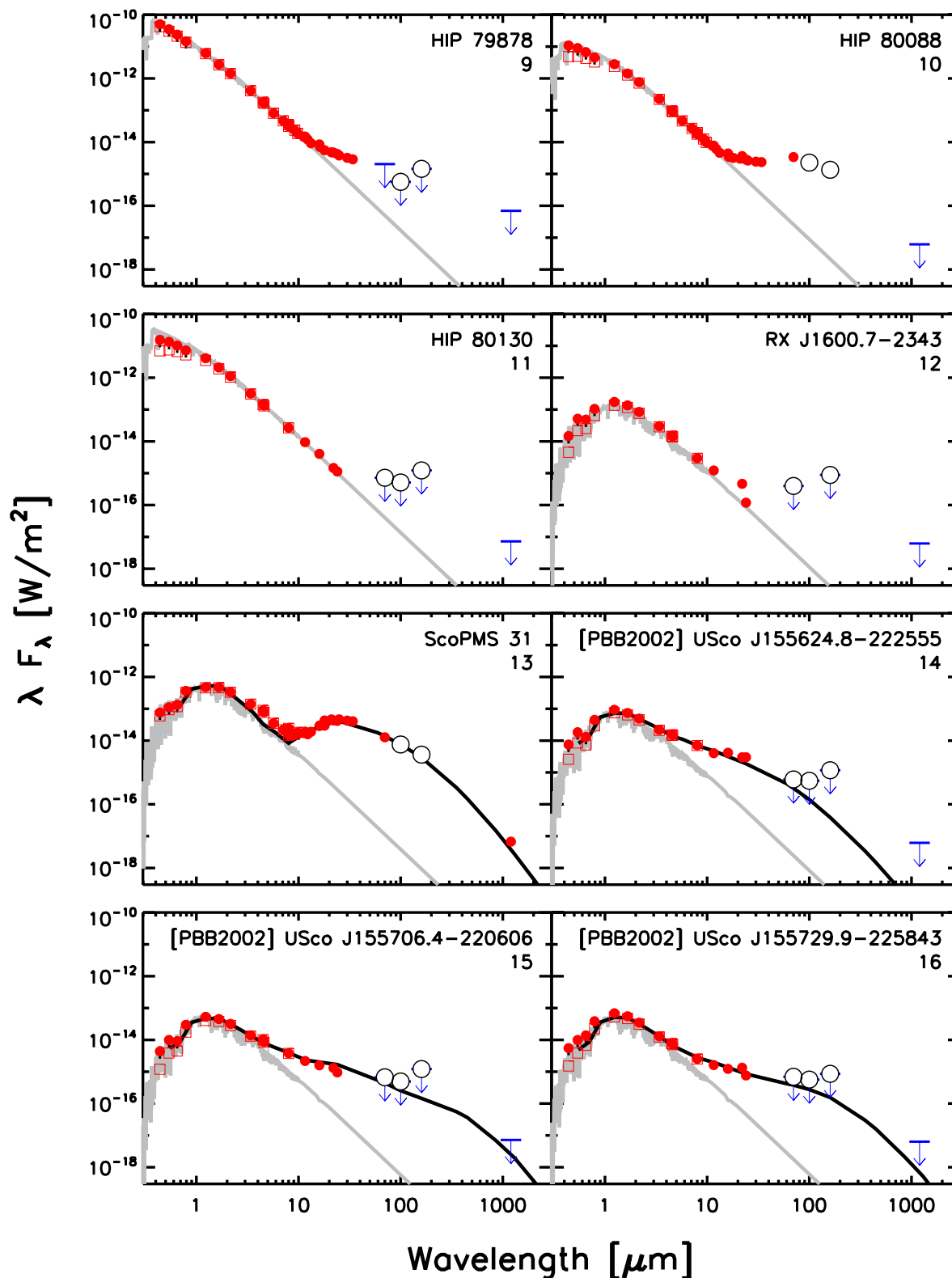


Fig. 3. As in Fig. 2, with the addition of black lines to indicate SEDs of best fit models from the genetic algorithm parameter search with MCFOST.

the parent model of the next generation, with the selection probability being proportional to model χ^2 ranking. In addition, the lowest χ^2 model is always carried over to the next generation.

The parameters of the child models in the new generation are randomly distributed around the values of the parent model. A fraction of the models are then further mutated by varying

all parameters by one-tenth the explored parameter ranges. The mutation rate is adjusted during the course of the calculation: if the ratio of the median χ^2 to lowest χ^2 is greater than 2, the parameter variation is increased by a factor of 1.5 to accelerate the identification of the solution region. If the ratio is below 1.1, then the mutation rate is reduced by a factor of 1.5, providing

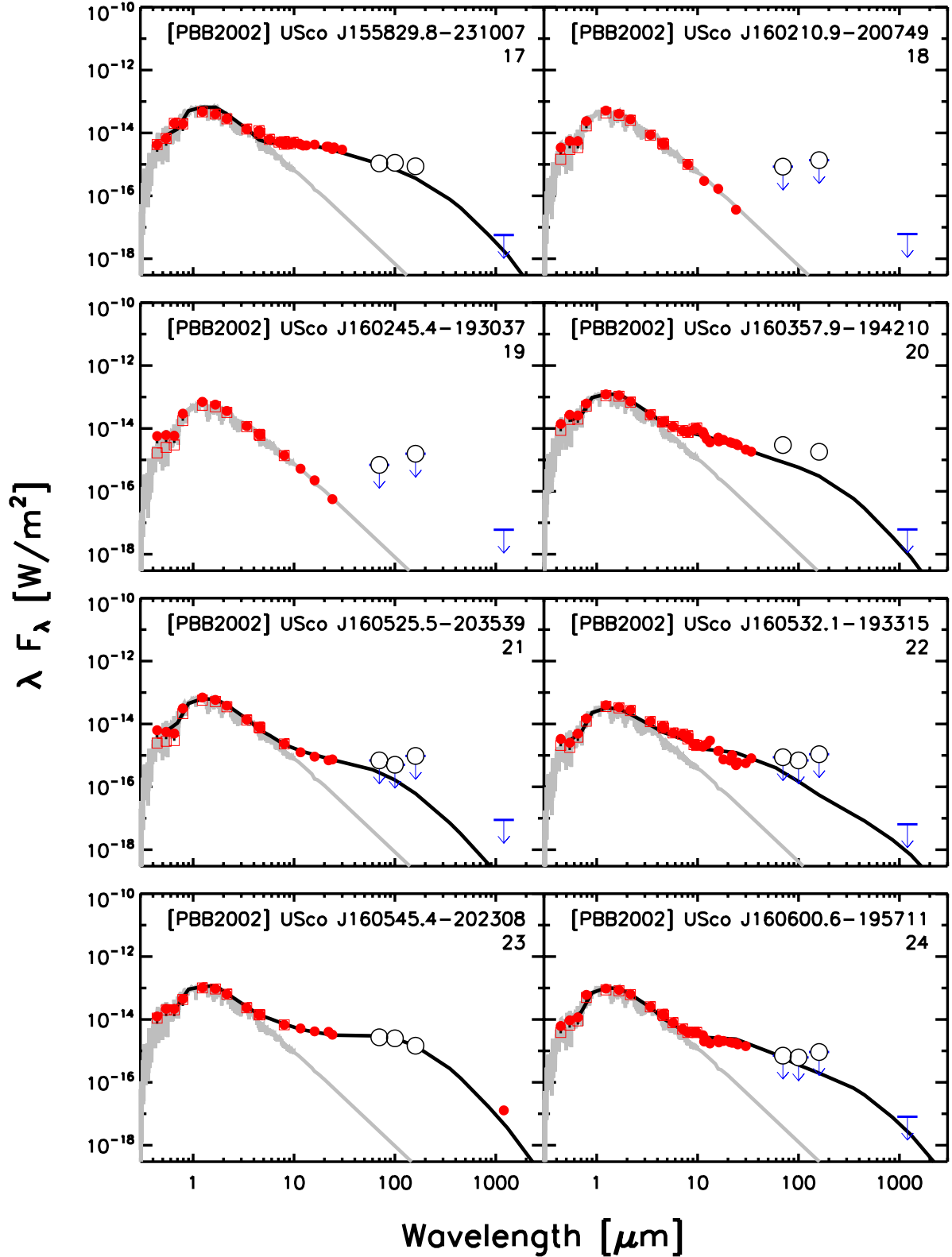


Fig. 3. continued.

for denser sampling in the vicinity of the solution. For each object, we carry out this procedure for 20 generations (for a total of 2000 models per disk). We adopt the parameters of the model with the lowest χ^2 value for each object, which we report in Table 5.

6. Discussion

6.1. Median SED

To study the evolution of the typical T Tauri star disk, we calculate the median SED for the 24 K&M stars in Upper Scorpius

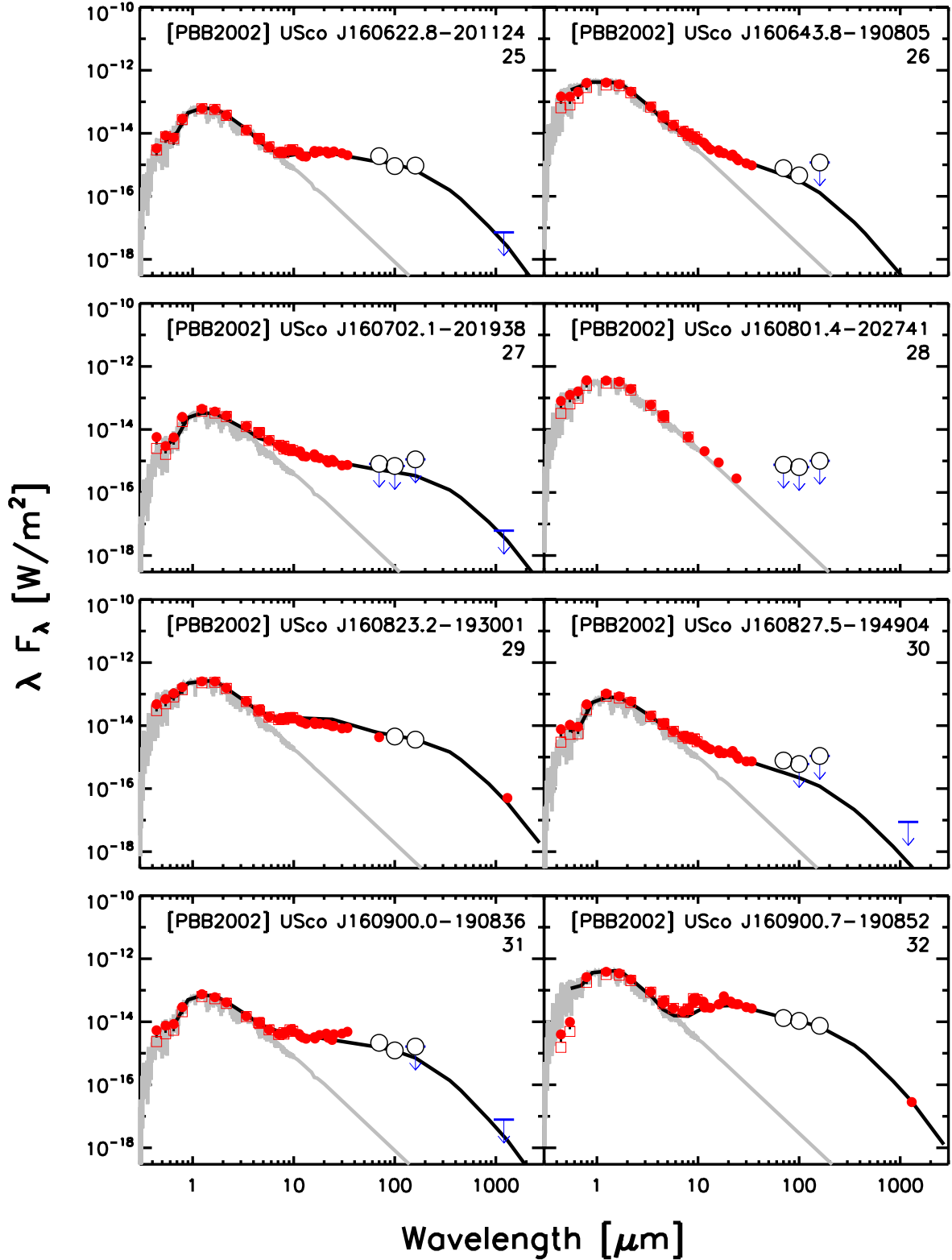


Fig. 3. continued.

with infrared excesses; these are the 22 sources modeled above, as well as J1604-2130 and J1614-1906. 20 of these are classified as Class II sources by the slope of their SEDs from K band to $24\ \mu\text{m}$ (for $\lambda F_\lambda \propto \lambda^n$, $-1.6 < n < -0.3$, Greene et al. 1994). 4 are classified as Class III with weaker but still clear infrared excess emission. They are included here as our goal is to understand the median disk among K&M stars in a single star forming

region. While we have collected optical, 2MASS, WISE, and *Spitzer* photometry, we exclude *Spitzer* IRS spectroscopy from our median as the sample was not uniformly observed with IRS; 5 low mass sources were omitted.

Such medians have been determined before using *Spitzer* IRAC, IRS, and MIPS observations in numerous young regions (e.g. Furlan et al. 2006). These have typically adjusted for the

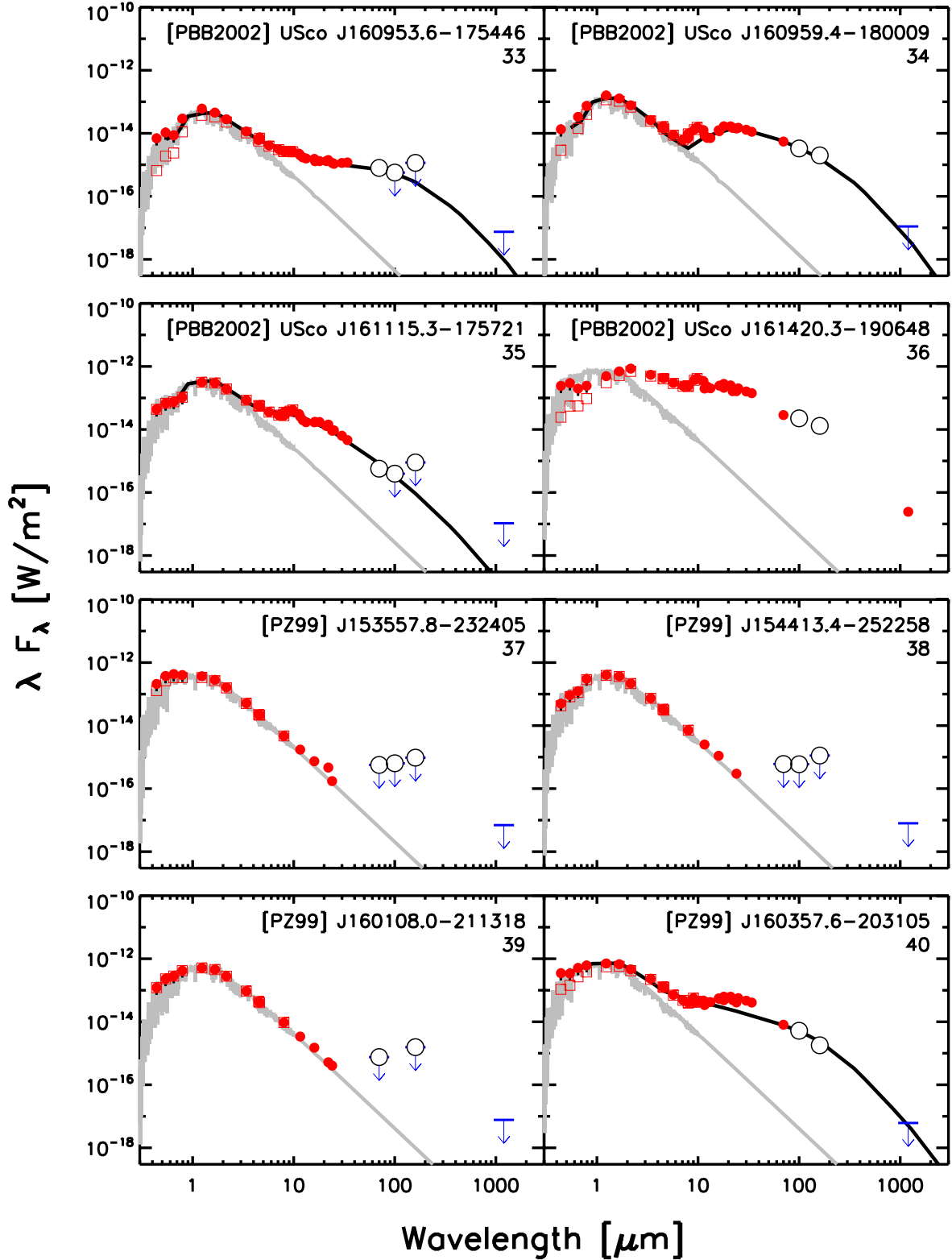


Fig. 3. continued.

varying stellar luminosity of the stars by normalizing individual SEDs to the same H band flux and then determining the medians of the resulting photometric points. This approach may lead to an underestimation of variation within the population (i.e. the upper and lower quartiles) by suppressing excesses at the shortest wavelengths. This is unlikely to be an important issue for the stars of Upper Scorpius, but it may be a significant issues for the

youngest, most massive disks which can exhibit excesses at *H* and *K* bands. Therefore, we adopt a new approach which more directly compensates for the variation in stellar luminosity.

For each source, we carry out the following procedure:

1. Deredden the SED using the values found in fits to the stellar photospheres.

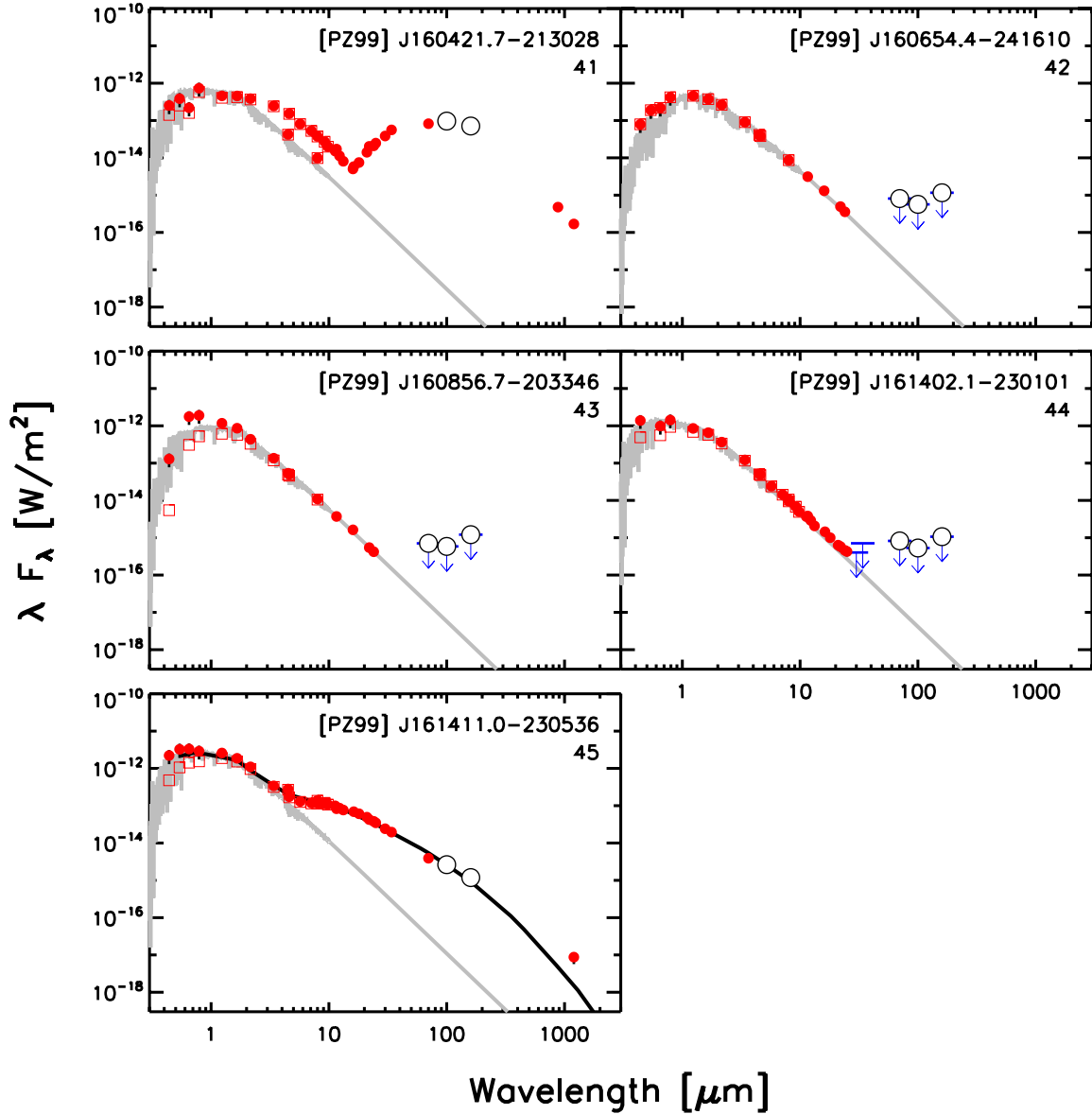


Fig. 3. continued.

Table 6. Model parameters.

Parameter	Minimum	Maximum
M_{dust}	$10^{-6} M_{\text{sun}}$	$10^{-3} M_{\text{sun}}$
R_{in}	0.03 AU	10 AU
α	-2	0
H_{100}	2 AU	20 AU
β	1.05	1.25

2. Subtract the stellar photosphere, as determined in our previous fitting (Sect. 4.3).
3. Scale each set of excesses to the luminosity of a median spectral type Upper Scorpius M2 star, [PBB2002] J160357.9-194210 (object 20, $0.09 L_{\odot}$).
4. Add the excesses to the stellar SED of this M2 star.

We choose object 20 as the representative star as it lies near both the mid-range of the spectral types represented here and the mean of the stellar luminosities, as well as having a low extinction. This will minimize error contributions in the scaling process.

At wavelengths up to $160 \mu\text{m}$, we determine the median flux, as well as upper and lower quartiles. We omit (sub)millimeter photometry from this analysis as it is determined almost entirely by the disk dust mass, and we seek to determine what constraints the far-infrared photometry can provide in its place.

Since all of these sources are detected at wavelengths up to $24 \mu\text{m}$, the determination of median and quartile fluxes are straightforward at short wavelengths. However, at the PACS wavelengths of 70 , 100 , and $160 \mu\text{m}$, from 6 to 10 sources have fluxes falling below our three sigma detection limits. Therefore, we adopt a new procedure for the determination of median and upper and lower quartile fluxes. We use the Kaplan-Meier product limit estimator – designed for work with censored data sets – to construct the scaled cumulative flux distribution at each wavelength (e.g. Feigelson & Nelson 1985). As we did not carry out PACS $70 \mu\text{m}$ observations for objects detected in *Spitzer* MIPS band 2 observations, we merge those detections with our $70 \mu\text{m}$ observations. We show the distributions for 70 , 100 , and $160 \mu\text{m}$ emission in Fig. 4. From these distributions, we then estimate the median and quartile fluxes for inclusion in the median SED,

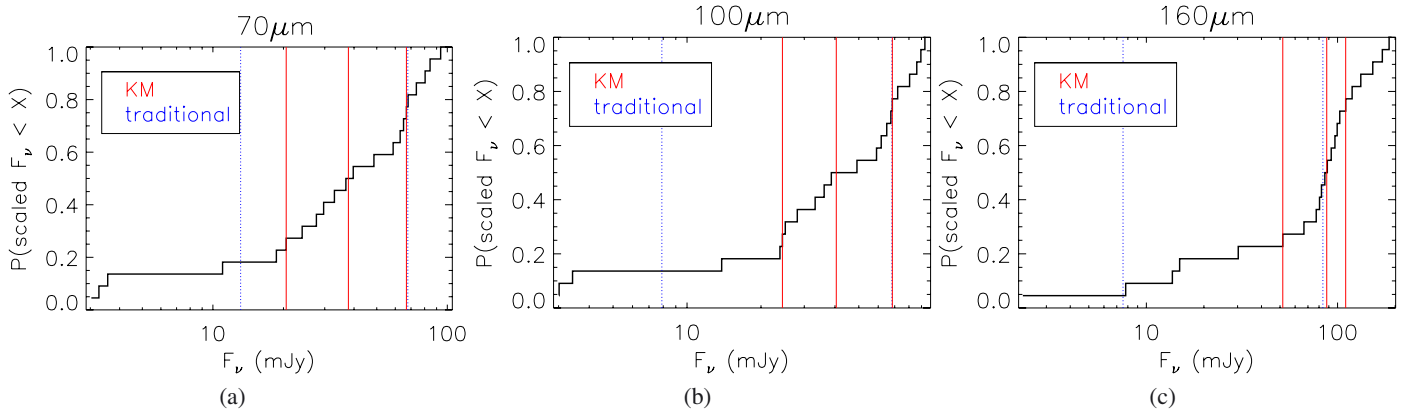


Fig. 4. Cumulative distributions of the luminosity scaled flux for PACS photometry of K and M Class II sources modeled in this paper. Distributions are built using the Kaplan-Meier estimator. The median and quartile values are shown with the vertical red lines, and the traditional median and quartiles are shown with the blue lines. The traditional method for determining lower quartiles fails in the situation where more than $\sim 25\%$ of observations result in nondetection, whereas this approach allows the determination of an upper limit to the quartile. The $160\ \mu\text{m}$ median presented here represents an upper limit, as more than half the sources are undetected at this wavelength.

Table 7. Upper Scorpius median SED.

Wavelength μm	Lower quartile W/m^2	Median W/m^2	Upper quartile W/m^2
0.44	$1.17\text{E}-14$	$1.65\text{E}-14$	$1.82\text{E}-14$
0.54	$1.65\text{E}-14$	$2.13\text{E}-14$	$2.56\text{E}-14$
0.65	$2.02\text{E}-14$	$2.31\text{E}-14$	$2.82\text{E}-14$
0.79	$5.27\text{E}-14$	$6.16\text{E}-14$	$7.57\text{E}-14$
1.24	$1.13\text{E}-13$	$1.21\text{E}-13$	$1.37\text{E}-13$
1.66	$1.04\text{E}-13$	$1.13\text{E}-13$	$1.26\text{E}-13$
2.16	$6.65\text{E}-14$	$7.04\text{E}-14$	$7.45\text{E}-14$
3.40	$2.36\text{E}-14$	$2.72\text{E}-14$	$3.17\text{E}-14$
4.50	$1.40\text{E}-14$	$1.55\text{E}-14$	$2.23\text{E}-14$
8.00	$4.40\text{E}-15$	$6.68\text{E}-15$	$7.71\text{E}-15$
11.6	$3.34\text{E}-15$	$5.29\text{E}-15$	$6.15\text{E}-15$
16.0	$2.51\text{E}-15$	$4.90\text{E}-15$	$5.81\text{E}-15$
24.0	$1.55\text{E}-15$	$3.21\text{E}-15$	$4.62\text{E}-15$
70.0	$9.26\text{E}-16$	$1.67\text{E}-15$	$2.91\text{E}-15$
100.	$7.65\text{E}-16$	$1.25\text{E}-15$	$2.09\text{E}-15$
160.	$9.74\text{E}-16$	$1.65\text{E}-15$	$2.07\text{E}-15$

which we show as the vertical red lines. In all three cases, the lower-quartile is an upper limit, while in the case of the $160\ \mu\text{m}$ flux, the median is also an upper limit.

For comparison, we determine the median SED for a sample of Taurus stars in the same fashion, using the 26 Class II sources of spectral types K2 to M5 observed with PACS photometry in Howard et al. (2013). For these sources, we have collected *B* and *I* band photometry from SDSS, *J*, *H*, and *K* band photometry from 2MASS, and 3.4, 4.6, 11.6, and 22.1 μm photometry from WISE. The spectral type distribution is slightly skewed toward warmer sources, including 10 K stars and 16 M stars. The wavelength distribution of disk emission is a function of the temperature distribution in the disk, which is in turn more strongly dependent on the distribution of disk material rather than stellar luminosity. Therefore, we consider this a useful comparison sample.

We present the median SEDs for Upper Scorpius and Taurus in Tables 7 and 8, respectively, and compare the median SEDs in Fig. 5. We note that our determination of the median SED exhibits a much larger range between upper and lower quartiles at short wavelengths than was found in previous determinations.

Table 8. Taurus median SED.

Wavelength μm	Lower quartile W/m^2	Median W/m^2	Upper quartile W/m^2
0.48	$9.49\text{E}-15$	$2.15\text{E}-14$	$1.38\text{E}-13$
0.63	$3.31\text{E}-14$	$5.73\text{E}-14$	$9.36\text{E}-14$
0.77	$1.60\text{E}-14$	$6.04\text{E}-14$	$9.97\text{E}-14$
0.91	$3.90\text{E}-14$	$6.04\text{E}-14$	$1.56\text{E}-13$
1.24	$1.03\text{E}-13$	$1.15\text{E}-13$	$1.28\text{E}-13$
1.66	$9.36\text{E}-14$	$1.06\text{E}-13$	$1.19\text{E}-13$
2.16	$6.21\text{E}-14$	$8.60\text{E}-14$	$1.11\text{E}-13$
3.35	$2.47\text{E}-14$	$5.02\text{E}-14$	$7.95\text{E}-14$
4.60	$1.76\text{E}-14$	$3.43\text{E}-14$	$5.72\text{E}-14$
11.6	$6.43\text{E}-15$	$1.07\text{E}-14$	$2.04\text{E}-14$
22.1	$4.84\text{E}-15$	$1.19\text{E}-14$	$2.12\text{E}-14$
70.0	$2.37\text{E}-15$	$4.23\text{E}-15$	$7.87\text{E}-15$
100.	$1.74\text{E}-15$	$2.48\text{E}-15$	$5.13\text{E}-15$
160.	$7.31\text{E}-16$	$1.36\text{E}-15$	$2.84\text{E}-15$

This highlights the need to directly scale excesses by the stellar luminosity, rather than by a proxy. The common practice of scaling all fluxes to a common *H* band value artificially reduces the contribution of sources with short wavelength excesses. We also point out that Taurus sources show both a significant optical excess and a large dispersion in optical excess values, which we attribute to the much higher accretion rates found among Taurus sources.

For these median SEDs, we make initial parameter estimates by carrying out model fits to the SEDs using the genetic algorithm as described above. We show these best fit models overlaid on the SEDs in Fig. 6. We list the model parameters for the two median SEDs at the end of Table 5. For all five properties, the Upper Scorpius median disk lies within the central 68% of the distribution of properties, suggesting it serves as a reasonable proxy for discussion of the whole population.

To estimate the parameter uncertainties, we have generated an evenly sampled grid around the best fit GA model for each median disk. From the 5-dimensional grid of models, we generated the one-dimensional probability distributions by assigning each model *i* a probability $P_i \propto \exp[-\chi^2/2]$, normalizing such that the model probabilities sum to 1, and then binning along each dimension. We show the property probability distributions

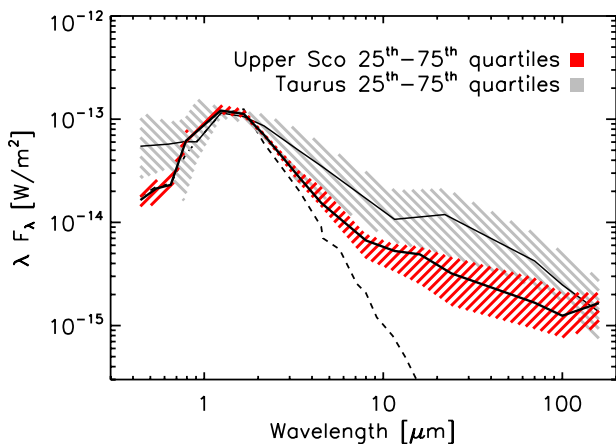


Fig. 5. Comparison of the Upper Scorpius and Taurus median SEDs. While the lower quartile of Taurus fluxes and upper quartile of Upper Scorpius fluxes overlap, the medians are separated by a factor of ~ 3 , suggesting the typical surviving Upper Scorpius disk is more evolved (e.g. dust settling, grain growth). In addition, Upper Scorpius sources show little to no optical excess, attributable to their low or nondetectable accretion.

in Fig. 7. The distribution of properties for the Upper Scorpius median SED is much flatter than that for Taurus, due to the $160 \mu\text{m}$ point being an upper limit. We have carried out further examination of the parameter sensitivities and their covariance in Appendix C.

The typical Upper Scorpius disk has both a smaller scale height and greater flaring than the typical Taurus disk, with a scale height at 100 AU , H_{100} , of 7.3 vs. 9.2 AU , and flaring of 1.16 vs. 1.07 . These factors combine to give a ratio of disk height to radius at 1 AU of 0.035 for Upper Scorpius, and 0.067 for Taurus. This suggests dust that is more settled than Taurus disks at all radii, and the degree of settling is greater at smaller radii.

The median Upper Scorpius SED corresponds to a disk with an inner disk edge at 0.041 AU , compared to that of Taurus with an inner disk edge at 0.044 AU . These inner disk radii are close to the sublimation radius, suggesting that the typical observed disk has not yet begun inside out clearing. This is consistent with previous findings that transitional disks showing evidence of inner disk clearing account for $\leq 10\%$ of circumstellar disks (Williams & Cieza 2011), a low enough frequency as to not affect the median of the ensemble. This low frequency is evidence that disks dissipate rapidly once clearing begins. However, the Upper Scorpius median SED has a tentatively steeper surface density profile. Imaging of dust emission is necessary to better constrain the surface density power-law index.

The total amount of material seen in these disks, however, has decreased, with the inferred dust mass of the Upper Scorpius median disk being a factor of ~ 100 lower than that of the median Taurus disk. We must note that the infrared SED which we use here is at least a factor of 5 less sensitive to the dust mass than is millimeter photometry. Our previous comparison of millimeter emission in Upper Scorpius and Taurus (Mathews et al. 2012b) showed that the high end threshold of millimeter-dust masses had decreased by a factor of 20. Our modeling here suggests a similar trend across all disk masses, but sensitive (sub)millimeter photometry is necessary to confirm this scenario.

Our results suggest that the few disks that remain at the age of Upper Scorpius are highly evolved in their other dust properties, as well. The combination of parameters suggesting a high degree of dust settling, low observable dust mass, yet an inner

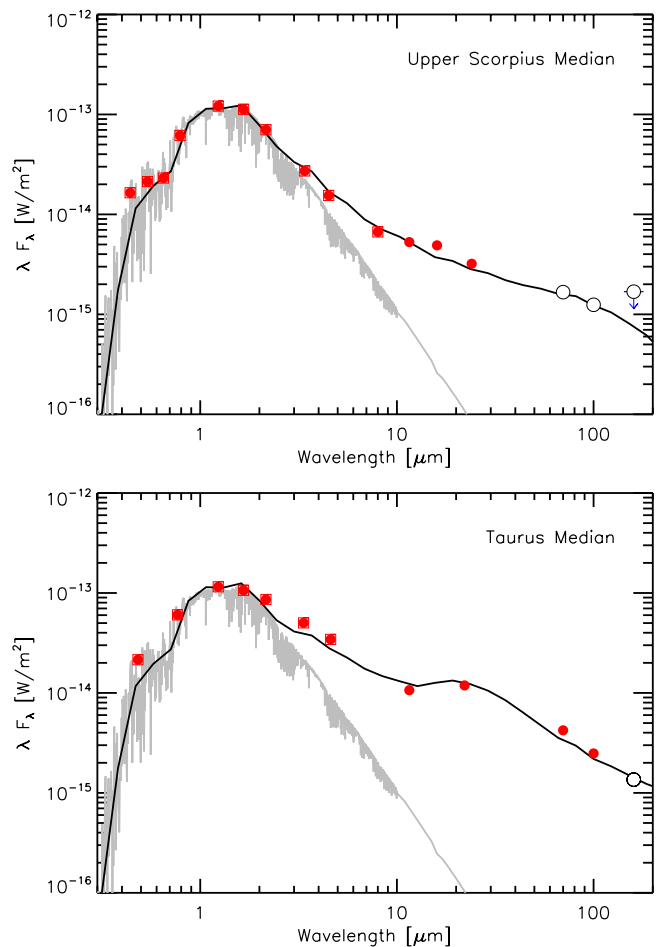


Fig. 6. Best fit models to the median Upper Scorpius (top) and Taurus (bottom) SEDs.

radius consistent with the sublimation radius may reinforce the idea that most disks experience homologous evolution (i.e. processes occurring at all radii, rather than inside-out or outside-in depletion mechanisms) through most of their lifetimes. Below, we discuss observations that inform our understanding of the gas evolution of these disks.

6.2. The nature of [OI] $63 \mu\text{m}$ emission

In cases where line emission is detected, it is important to clearly establish the nature of the emission source. Upper Scorpius is old enough that background CO emission is largely dissipated, and the IFU observations allowed us to identify background contamination in [CII] emission. But in addition to disks, jets are a prominent source of [OI] line emission from young stars (Liseau et al. 2006). In an earlier study (Mathews et al. 2010), we compared the emission line ratios of [OI] 63 , [OI] 145 , and [CII] 157 of four GASPS sources to the locus of jet sources observed by Liseau et al., and determined that these sources were unlikely to overlap. However, comparisons to this locus are useful only in cases where one or several lines are detected. Among our sample here only 2 sources are detected in line emission.

To classify sources as potential jet or disk sources, we make use of a recently developed diagnostic using the [OI] $63 \mu\text{m}$ line emission and continuum. Howard et al. (2013) have identified the ratio of the [OI] $63.184 \mu\text{m}$ line flux and the $63 \mu\text{m}$ continuum flux as a powerful diagnostic of the nature of the

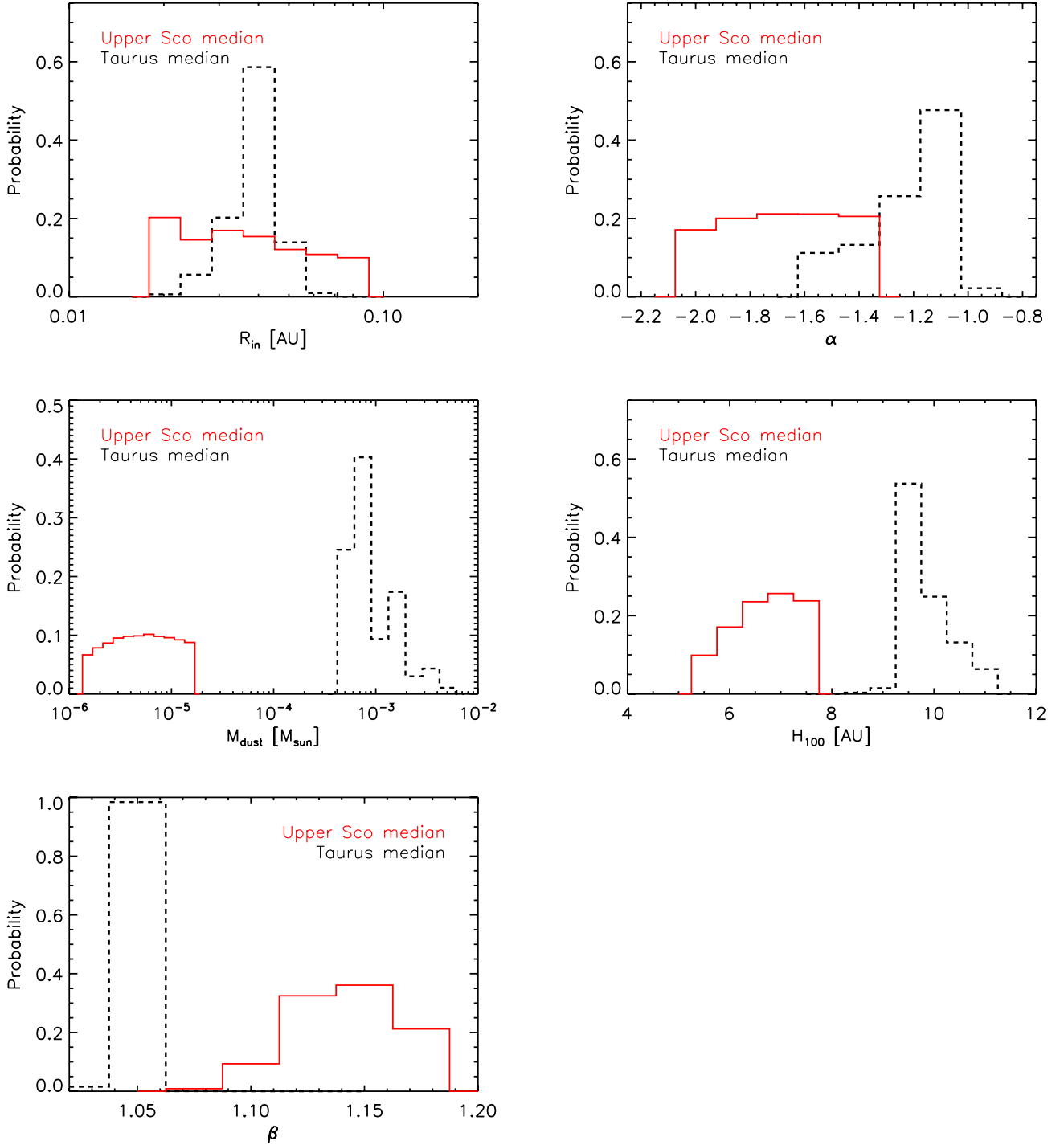


Fig. 7. Comparison of the probability distributions for the Upper Scorpius and Taurus median disks. The striking differences in the disk scale height and flaring index show that the median Upper Scorpius SED represents a disk that has experienced more dust settling than in Taurus. The low dust mass hints at the potential importance of grain growth in reducing opacity and hence detectable dust mass. The sharp edges to the Upper Scorpius distributions are due to the sampling of the parameter space.

[OI] emission, finding that disk sources lacking a jet lie along a narrow locus, and sources with jets range up to an order of magnitude higher. In Fig. 8, we show our Upper Scorpius sample in comparison to Taurus objects and the trend found by Howard et al. Two of our sources are detected in [OI] 63 μm line emission. One of these, J1614-1906, lies above the nonjet locus, and may potentially host a jet. The other detected source, J1604-2130 lies in the nonjet regime, as may the rest of the sample which is undetected in [OI] line emission.

6.3. Gas mass

We may use recently developed gas mass diagnostics to make initial estimates of disk gas mass in the Upper Scorpius sample. Kamp et al. (2011) outline the use of the [OI] 63 μm emission line and millimeter CO line emission to constrain the disk gas mass based on identification of empirical relations seen in the DENT grid of models (Woitke et al. 2010). In that work, they discuss the use of the [OI] 63/CO 2–1 ratio to constrain the mean

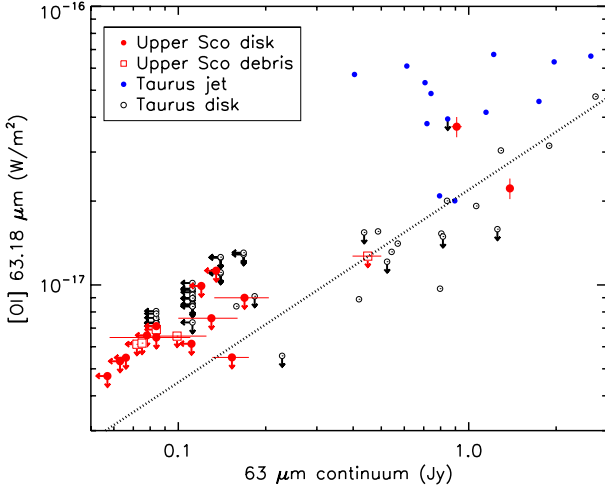


Fig. 8. Comparison of [OI] 63 μm and 63 μm continuum fluxes to those of jet and nonjet sources in Taurus. The empirical relationship discovered by Howard et al. (2013) is shown with a dotted line and provides a useful diagnostic. From its placement among Taurus jet sources, we tentatively identify [OI] emission from J1614-1906 as originating in a jet. Similarly, we identify J1604-2130 as showing emission from a disk.

gas temperature, which then allows the direct conversion of the observed [OI] emission to the gas mass. They point out that this works for disks with gas masses less than about $1 M_{\text{Jup}}$ in which the [OI] 63 μm line is optically thin. Furthermore, it may improve at even lower gas masses at which the CO $J = 2-1$ line becomes optically thin ($\sim 0.1 M_{\text{Jup}}$). With the detection of both lines, the gas mass can be estimated to within an order of magnitude, based on comparison of estimated gas masses to input model gas masses from the DENT grid. They note that this large uncertainty is likely due to many other variables affecting the emission of the two lines, including the disk outer radius, disk flaring, and the amount of UV radiation.

In the case of Upper Scorpius, however, where few stars are detected in either CO or [OI] emission, the DENT grid still allows for limits to be placed on the disk gas mass. We calculate the contours of mean gas mass as a function of [OI] 63 μm and CO $J = 2-1$ flux for stars with masses of 0.5 and 1.0 solar mass. In selecting models from the DENT grid, we applied the additional constraints of including stars older than 3 Myr, with dust masses $\leq 0.1 M_{\text{Jup}}$, and observed at inclinations $\leq 80^\circ$, in order to avoid edge on disk models where even low mass disks can reach large column densities. All fluxes were scaled to a distance of 145 pc. For each of our stars, we then compare their flux or 3σ upper limits to the grid of gas masses (Fig. 9), using bilinear interpolation to determine the values. The grid of mean gas masses has a typical uncertainty of at least 0.5 dex, suggesting a factor of at least ~ 3 uncertainty in the estimated gas masses and mass limits. Of the 8 K&M stars observed for both [OI] 63 μm and CO $J = 2-1$ emission, only J1604-2130 is detected in both lines. It has an estimated gas mass of $2 M_{\text{Jup}}$, consistent with the mass of $\sim 1 M_{\text{Jup}}$ found by comparison to Fig. 24 in Kamp et al. (2011). The other 7 sources have upper limits to the gas mass of 0.4 to $1.8 M_{\text{Jup}}$, with a median upper limit of $1.1 M_{\text{Jup}}$. We report gas mass estimates and upper limits in Table 9.

Examination of the mean gas mass contours in Fig. 9 indicates that the gas mass estimates are limited in this regime by our CO line sensitivity. The large collection area of new telescopes, such as ALMA, will make it possible to probe deeper at millimeter wavelengths. With another order of magnitude of sensitivity

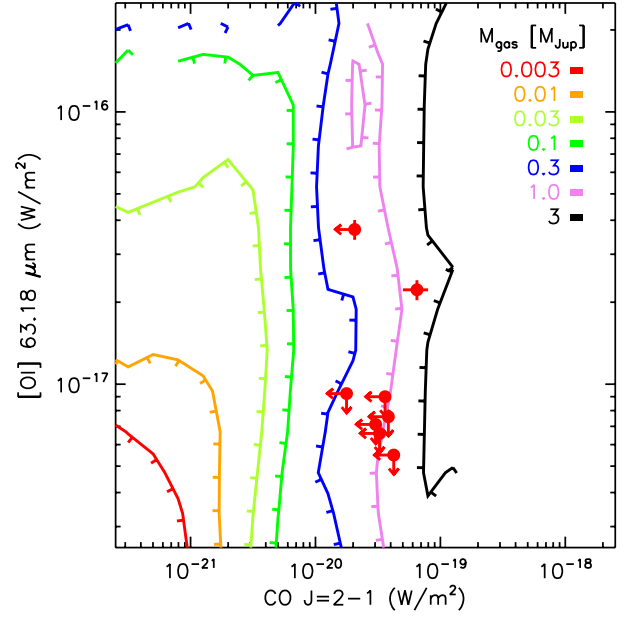


Fig. 9. Comparison of [OI] 63 μm and CO 2–1 fluxes to mean gas masses from the DENT grid. Observed values are shown with red circles, with 3σ upper limits indicated with arrows. Another order of magnitude sensitivity to CO will be necessary to distinguish most gas masses.

Table 9. Gas mass estimates.

Name	M_{gas} M_{Jup}
ScoPMS 31	<1.3
[PBB2002] J155829.8-231007	<0.9
[PBB2002] J160545.4-202308	<1.1
[PBB2002] J160823.2-193001	<0.4
[PBB2002] J160959.4-180009	<1.8
[PBB2002] J161420.3-190648	<0.5
[PZ99] J160357.6-203105	<1.1
[PZ99] J160421.7-213028	2.1

to CO emission, the upper limits on [OI] emission from these sources will still allow for a factor of ten improvement in gas mass estimates.

6.4. Gas-to-dust ratio

To attempt to place a limit on the gas to dust ratio of the typical Upper Scorpius disk, we use the thermochemical modeling code ProDiMo (Woitke et al. 2009; Kamp et al. 2010) to predict [OI], [CII], and CO line emission for the median SED disk for gas-to-dust ratios of 100, 10, and 1. These values represent ratios ranging from that of ISM material and the presumed ratio in the youngest disks, down to the regime where disks may be considered to be transitioning to debris disks. We assume the disks have well mixed gas and dust, and adopt the disk geometry found by SED fitting (Sect. 6.1).

High energy UV photons play an important role in heating gas in the disk atmosphere, but the ultraviolet environment around these stars remains unknown. To compensate, we explored two UV emission scenarios, with a fractional luminosity of 0.05 and 0.1, and adjusting the spectral slope so as the smoothly intersect the photospheric emission. In neither case, however, was line emission strong enough to be detected at the

Table 10. Upper Sco median predicted gas line strength by gas-to-dust ratio.

Line	Gas-to-dust ratio: Wavelength (μm)	$f_{\text{UV}} = 0.05$, UV slope = 2.2^a			$f_{\text{UV}} = 0.1$, UV slope = 1.6^a		
		1:1 W/m ²	10:1 W/m ²	100:1 W/m ²	1:1 W/m ²	10:1 W/m ²	100:1 W/m ²
[OI]	63.184	2.55×10^{-19}	6.96×10^{-19}	1.83×10^{-18}	4.84×10^{-19}	1.52×10^{-18}	3.76×10^{-18}
[OI]	145.525	7.37×10^{-21}	1.31×10^{-20}	4.04×10^{-20}	1.42×10^{-20}	3.17×10^{-20}	9.93×10^{-20}
[CII]	157.741	4.50×10^{-20}	9.77×10^{-20}	2.28×10^{-19}	6.81×10^{-20}	1.63×10^{-19}	3.29×10^{-19}
CO 3–2	866.963	5.53×10^{-21}	1.02×10^{-20}	1.44×10^{-20}	5.58×10^{-21}	1.11×10^{-20}	1.34×10^{-20}
CO 2–1	1300.404	1.75×10^{-21}	3.31×10^{-21}	4.50×10^{-21}	1.68×10^{-21}	3.56×10^{-21}	4.25×10^{-21}

Notes. ^(a) The fractional UV luminosity is indicated by f_{UV} , and the UV slope indicates the spectral slope of the UV excess. The UV slope is set to achieve a smooth intersection with the SED of the stellar photosphere.

Table 11. Taurus median predicted gas line strength by gas-to-dust ratio.

Line	Gas-to-dust ratio: Wavelength (μm)	$f_{\text{UV}} = 0.05$, UV slope = 2.2^a			$f_{\text{UV}} = 0.1$, UV slope = 1.6^a		
		1:1 W/m ²	10:1 W/m ²	100:1 W/m ²	1:1 W/m ²	10:1 W/m ²	100:1 W/m ²
[OI]	63.184	6.45×10^{-19}	1.49×10^{-18}	4.30×10^{-18}	1.63×10^{-18}	3.26×10^{-18}	7.67×10^{-18}
[OI]	145.525	1.17×10^{-20}	2.01×10^{-20}	7.23×10^{-20}	3.65×10^{-20}	5.13×10^{-20}	1.33×10^{-19}
[CII]	157.741	5.14×10^{-20}	1.26×10^{-19}	3.10×10^{-19}	8.17×10^{-20}	2.14×10^{-19}	5.35×10^{-19}
CO 3–2	866.963	6.67×10^{-21}	1.30×10^{-20}	1.06×10^{-20}	6.82×10^{-21}	1.13×10^{-20}	1.57×10^{-20}
CO 2–1	1300.404	2.23×10^{-21}	3.86×10^{-21}	3.68×10^{-21}	2.29×10^{-21}	3.40×10^{-21}	5.55×10^{-21}

Notes. ^(a) The fractional UV luminosity is indicated by f_{UV} , and the UV slope indicates the spectral slope of the UV excess. The UV slope is set to achieve a smooth intersection with the SED of the stellar photosphere.

sensitivity of our observations. Hence, the gas-to-dust ratio of the typical Upper Scorpius disk is not directly constrained by our observations.

For comparison, we carried out similar modeling for the Taurus median SED, finding that only in the case of a 100:1 gas to dust ratio and a high UV luminosity did the typical disk have [OI] 63 μm emission bright enough to be detected. All other lines remain below our detection limits. We present the results of the gas line models in Tables 10 and 11. A high fraction of Class II sources in Taurus exhibit [OI] 63 μm line emission (Howard et al. 2013), suggesting that many young disks do have a gas-to-dust ratio near 100 or host jets.

Two sources in Upper Scorpius have gas mass upper limit estimates and millimeter determinations of the dust mass (objects 34 and J1614-1906). In both cases, the low gas mass estimates of $\lesssim 0.5 M_{\text{Jup}}$ indicate gas-to-dust ratios much less than the primordial value of 100. With mm-dust masses of 0.041 and 0.014 M_{Jup} (Mathews et al. 2012b), respectively, these disks have gas-to-dust ratios of $\lesssim 10$ and $\lesssim 30$.

The one source detected in both [OI] 63 μm and CO emission, J1604-2130, has an estimated gas mass of 2 M_{Jup} . In previous work we found this disk has a dust mass of 0.1 M_{Jup} (Mathews et al. 2012b,a), suggesting a gas-to-dust ratio of ~ 20 . However, this disk is an unusual one in the Upper Scorpius sample, a transition disk with a ~ 70 AU hole in millimeter emission and smaller dust grains within the hole (Mathews et al. 2012a; Mayama et al. 2012). It likely represents the tail end of the disk survival function, and the unique dust configuration will likely lead to different excitation conditions than assumed in the DENT grid, raising the uncertainty in the gas mass estimation. However, as this is the sole source for which we can determine a gas-to-dust ratio, it may be reasonable to treat it as an indicator of the upper limit to the gas-to-dust ratio in Upper Scorpius.

Combined with our previous finding that the highest dust masses have decreased by a factor ~ 20 from the age of Taurus

to that of Upper Scorpius and the extension of that conclusion to the general disk population via our modeling here, this suggests an additional factor of ~ 5 decrease in gas masses. Several mechanisms could play a role in preferentially preserving dust compared to gas. As dust grows beyond micron sizes or settles to the midplane, it becomes decoupled from the gas. There is a net transfer of material from the gas phase to solids by freeze-out in the disk interior, though some of this material may return to the gas phase through later heating. In addition, detectable dust is likely replenished by collisions among larger objects which are undetectable due to low opacity. Future observations with instruments offering high sensitivity and resolution at cm wavelengths, such as the eVLA and Square-Kilometer Array, will provide a crucial test of replenishment models, by directly probing the population of pebbles.

Our finding of a low gas to dust ratio, in combination with the typically geometrically thin structure, suggests the importance of dust settling for allowing gas depletion to proceed more rapidly than depletion of dust.

6.5. Planet formation

Recent decades have seen the discovery of hundreds of gas giant extrasolar planets, and the *Kepler* mission is leading to an explosion in the number of candidates. Borucki et al. (2011) estimate approximately 20% of stars host giant planets, and recent observations have nearly doubled the number of candidates, allowing for further refinement of this estimate (Batalha et al. 2013). However, far less than 20% of stars in Upper Scorpius have sufficient disk gas mass to form a giant planet if that process were to begin today. In Mathews et al. (2012b), we argued that if disks retained the 100 to 1 gas to dust ratio, the 4 stars with dust masses of 0.01 M_{Jup} or greater could have at least 1 M_{Jup} of gas. Assuming a 10–20% planet formation efficiency for a Jupiter composition planet, based on the disk mass required to

form Jupiter in the minimum mass solar nebula (Weidenschilling 1977; Desch 2007), such a disk may be sufficient to form a gas giant planet with a mass ranging from 2 Neptune masses to approximately a Saturn mass.

Furthermore, as our sample was built using all disk bearing sources from the statistically complete parent sample of 218 stars from Carpenter et al. (2006), the potential gas giant planet forming disk fraction (f_{Nep}) is approximately $1.8 \pm 0.9\%$ (4/218). If f_{Nep} decays as an exponential in time, and assuming that all stars form with a potentially giant planet forming disk of $1 M_{\text{Jup}}$ or greater, then Upper Scorpius has experienced 5.8 ± 0.7 half-lives. The 5 Myr age for Upper Scorpius (Blaauw 1978; PZ99) would imply that giant planet formation must be a rapid process, with a half-life for potentially planet forming disks of 0.9 ± 0.1 Myr. That in turn would imply that giant planet formation must generally begin within ~ 2.0 Myr of formation, as that is when approximately 80% of disks would drop below $1 M_{\text{Jup}}$. However, if Upper Scorpius is 11 Myr old (Pecaut et al. 2012), the half-life of the f_{Nep} would be 1.9 Myr, suggesting that giant planet formation could be correspondingly slower.

This implied 2–4 Myr limit to the time available for giant planet formation lies at the low to mid-range of ages needed to form giant planets via core accretion models (Pollack et al. 1996; Alibert et al. 2005). However, if the gas-to-dust ratio of 20 of J1604-2130 represents the upper limit among Upper Scorpius disks, then this is the only star which could support further giant planet formation. In either case, the fraction of stars hosting potentially giant planet forming disks is lower than the gas giant fraction in the field by at least a factor of 10, suggesting that gas giant planet formation is essentially finished in Upper Scorpius.

Regarding the formation of small, rocky planets, the median dust mass in Upper Sco, $3.5 \times 10^{-6} M_{\odot}$, corresponds to $\sim 1 M_{\oplus}$. The rocky planets of the solar system only require about a factor of 3 enrichment from primordial solids (Weidenschilling 1977), suggesting that a dust mass of $\sim 10^{-5} M_{\odot}$ would be the minimum dust mass necessary to form a $1 M_{\oplus}$ planet. Including J1604-2130 and J1614-1906, which we did not model here but which have dust masses determined by millimeter photometry, 5/24 disk bearing K&M stars in Upper Scorpius have this minimum dust mass for the formation of earth mass planets. These represent $2.3 \pm 1.0\%$ of the stars in Upper Scorpius. In the field, $\sim 15\%$ of stars host $0.5\text{--}2 R_{\oplus}$ planets (Borucki et al. 2011). Assuming these planets have similar densities to Earth, the fraction of Upper Sco stars which could form an Earth-mass planet if the formation process was to begin now is ~ 0.33 that of the fraction of Earth-mass planet hosts in the field. This suggests that, much like giant planet formation, the processes that lead to Earth-mass planet formation are well underway in Upper Sco, and much of the dust has already grown to large sizes that are unobservable without longer wavelength observations.

6.6. Notes on selected sources

J1604-2130: the outer disk structure of the K2 star J1604-2130 was described in Mathews et al. (2012a), based on sub-millimeter interferometry. The disk has a dust mass $\sim 0.1 M_{\text{Jup}}$ and exhibits a 70 AU hole in millimeter continuum emission, but rising 16 and 24 μm excesses imply the presence of small amounts of dust as close as 20 AU. Furthermore, the system has exhibited a factor of ~ 4 variation in emission at shorter wavelengths (Dahm & Carpenter 2009), with NIR spectroscopy indicating the presence of 900 K dust (corresponding to ~ 0.1 AU). After merging WISE photometry and *Spitzer* spectroscopy with the previously studied SED, we find the presence of an excess at

all wavelengths from 3.4 μm to 16 μm (the wavelength at which an excess was first apparent in previous work). The sharply rising excess from 16 μm is still apparent and is consistent with the presence of dust at 20 AU, and does not affect the gap in millimeter emission required by SMA observations. This disk structure has since been broadly verified by high resolution *H*-band imaging of the disk by Mayama et al. (2012), who found small grain dust features extending inside the mm-disk inner edge.

This complex dust disk structure – a lack of millimeter-sized grains at radii less than 70 AU, yet the presence of dust near the sublimation radius and locally within the cavity – can only be produced by dynamical interaction. J1604-2130 will provide a test bed for examining interactions between giant planets and disks, as well as for the complex modeling techniques needed to simultaneously fit these multiple disk regions.

J1614-1906: the second source detected in our line survey also has the fourth largest dust mass in Upper Sco as determined by millimeter photometry (Mathews et al. 2012b), $\sim 0.015 M_{\text{Jup}}$. However, the large extinction suggests the star is being viewed edge on through a disk, and large NIR excess suggests we may be directly viewing the disk inner edge. In addition, the high ratio of the [OI] 63 μm line to 63 μm continuum indicates this system may be driving a jet. This star has the second highest *H α* equivalent width in Upper Sco, -52 \AA , which suggests an accretion rate $\sim 10^{-9} M_{\odot}/\text{yr}$ using the conversion presented in Dahm (2008). In addition, strong emission has been detected in the [OI] 6300 \AA forbidden line (Montesinos, in prep.), a common indicator of jets (e.g. Cabrit et al. 1990). We defer modeling of this system to a later paper.

Binaries: ScoPMS 31 and [PZ99] J161411.0-230536 (objects 13 and 45) have binary companions at projected separations of 84 and 32 AU, respectively (Köhler et al. 2000; Metchev & Hillenbrand 2009). These sources are also detected in millimeter continuum and exhibit Class II infrared excesses. Mid-infrared excesses indicate, in both cases, the presence of dust at radii of ~ 1 AU or less. The disks will necessarily be truncated at outer radii of a few tens of AU by dynamical interactions with the companions. While the millimeter emission could originate from these disks or from circumbinary material, there are no abrupt changes in the SED shape indicating gaps in emission, as may be seen in a combination circumstellar/circumbinary emission system. High sensitivity, high spatial resolution millimeter imaging, such as may be accomplished with ALMA, will allow for the measurement of the disk outer radii and determination of the presence of circumbinary disks.

7. Summary

We have carried out a survey for far-infrared emission lines and photometry, as well as millimeter line emission, among the stars of Upper Scorpius. From these observations, we have found that:

1. 17 of 23 K and M stars with 16 or 24 μm excess exhibit continuum emission at 70, 100, and/or 160 μm .
2. The median of Upper Scorpius emission represents an early M star bearing a geometrically thin ($H(1 \text{ AU}) = 0.035 \text{ AU}$), depleted ($M_{\text{dust}} \sim 3 \times 10^{-6} M_{\odot}$) disk with an inner edge near the sublimation radius. The typical Upper Scorpius disk has only half the scale height and much lower dust mass compared to the typical disk in Taurus.
3. No B or A stars show evidence for hosting circumstellar gas, and their SEDs are all consistent with either having no disk or a debris disk.

4. One K star, [PBB2002] J161420.3-190648, has far-infrared line emission consistent with origin from a jet.
5. The K star [PZ99] J160421.7-213028 has a disk gas mass of $\sim 2 M_{\text{Jup}}$. All 6 other stars with both [OI] and CO observations have line upper limits consistent with gas masses less than $1 M_{\text{Jup}}$. Combined with dust mass measurements, these imply an upper limit gas-to-dust ratio of 0.2 among the remaining Upper Scorpius disks.

In general, the stars of Upper Scorpius lack sufficient material for forming giant or earth-size planets if this formation process were to begin now. By the age of Upper Scorpius, giant planets must have completed formation, as must the precursor bodies of Earth-size planets.

Acknowledgements. This work is supported by the EU A-ERC grant 291141 CHEMPLAN. C. Pinte acknowledges funding from the European Commission's 7th Framework Program (contract PERG06-GA-2009-256513) and from Agence Nationale pour la Recherche (ANR) of France under contract ANR-2010-JCJC-0504-01. We acknowledge the Service Commun de Calcul Intensif de l'Observatoire de Grenoble (SCCI) for computations on the super-computer funded by ANR (contracts ANR-07-BLAN-0221, ANR-2010-JCJC-0504-01 and ANR-2010-JCJC-0501-01). Financial support was also provided by the Milenium Nucleus P10-022-F from the Chilean Ministry of Economy and from the European Community 7th Framework programme (Grant Agreement 284405).

References

Alibert, Y., Mordasini, C., Benz, W., & Winisdoerffer, C. 2005, *A&A*, 434, 343
 Batalha, N. M., Rowe, J. F., Bryson, S. T., et al. 2013, *ApJS*, 204, 24
 Blaauw, A. 1978, *Internal Motions and Age of the Sub-Association Upper Scorpio*, ed. L. V. Mirzoyan, 101
 Borucki, W. J., Koch, D. G., Basri, G., et al. 2011, *ApJ*, 736, 19
 Cabrit, S., Edwards, S., Strom, S. E., & Strom, K. M. 1990, *ApJ*, 354, 687
 Carpenter, J. M., Mamajek, E. E., Hillenbrand, L. A., & Meyer, M. R. 2006, *ApJ*, 651, L49
 Carpenter, J. M., Mamajek, E. E., Hillenbrand, L. A., & Meyer, M. R. 2009, *ApJ*, 705, 1646
 Cutri, R. M., Wright, E. L., Conrow, T., et al. 2011, *Explanatory Supplement to the WISE Preliminary Data Release Products*, Tech. rep.
 Dahm, S. E. 2008, *AJ*, 136, 521
 Dahm, S. E., & Carpenter, J. M. 2009, *AJ*, 137, 4024
 de Bruijne, J. H. J. 1999, *MNRAS*, 310, 585
 de Zeeuw, P. T., Hoogerwerf, R., de Bruijne, J. H. J., Brown, A. G. A., & Blaauw, A. 1999, *AJ*, 117, 354
 Dent, W. R. F., Thi, W. F., Kamp, I., et al. 2013, *PASP*, 125, 477
 Desch, S. J. 2007, *ApJ*, 671, 878

Draine, B. T. 2006, *ApJ*, 636, 1114
 Eiroa, C., Marshall, J. P., Mora, A., et al. 2013, *A&A*, 555, A11
 Feigelson, E. D., & Nelson, P. I. 1985, *ApJ*, 293, 192
 Fitzpatrick, E. L. 1999, *PASP*, 111, 63
 Furlan, E., Hartmann, L., Calvet, N., et al. 2006, *ApJS*, 165, 568
 Greene, T. P., Wilking, B. A., Andre, P., Young, E. T., & Lada, C. J. 1994, *ApJ*, 434, 614
 Hartmann, L., Calvet, N., Gullbring, E., & D'Alessio, P. 1998, *ApJ*, 495, 385
 Hernández, J., Calvet, N., Hartmann, L., et al. 2005, *AJ*, 129, 856
 Howard, C. D., Sandell, G., Vacca, W., et al. 2013, *ApJ*, in press
 Jarrett, T. H., Cohen, M., Masci, F., et al. 2011, *ApJ*, 735, 112
 Kamp, I., Tilling, I., Woitke, P., Thi, W., & Hogerheijde, M. 2010, *A&A*, 510, A18
 Kamp, I., Woitke, P., Pinte, C., et al. 2011, *A&A*, 532, A85
 Köhler, R., Kunkel, M., Leinert, C., & Zinnecker, H. 2000, *A&A*, 356, 541
 Kouwenhoven, M. B. N., Brown, A. G. A., & Kaper, L. 2007, *A&A*, 464, 581
 Kurucz, R. L. 1993, *VizieR Online Data Catalog*, VI/39
 Liseau, R., Justtanont, K., & Tielens, A. G. G. M. 2006, *A&A*, 446, 561
 Markwardt, C. B. 2009, in *ASP Conf. Ser.* 411, eds. D. A. Bohlender, D. Durand, & P. Dowler, 251
 Mathews, G. S., Dent, W. R. F., Williams, J. P., et al. 2010, *A&A*, 518, L127
 Mathews, G. S., Williams, J. P., & Ménard, F. 2012a, *ApJ*, 753, 59
 Mathews, G. S., Williams, J. P., Ménard, F., et al. 2012b, *ApJ*, 745, 23
 Matthews, B. C., Sibthorpe, B., Kennedy, G., et al. 2010, *A&A*, 518, L135
 Mayama, S., Hashimoto, J., Muto, T., et al. 2012, *ApJ*, 760, L26
 Metchev, S. A., & Hillenbrand, L. A. 2009, *ApJS*, 181, 62
 Ott, S. 2010, in *Astronomical Data Analysis Software and Systems XIX*, eds. Y. Mizumoto, K.-I. Morita, & M. Ohishi, *ASP Conf. Ser.*, 434, 139
 Pecaut, M. J., Mamajek, E. E., & Bubar, E. J. 2012, *ApJ*, 746, 154
 Pilbratt, G. L., Riedinger, J. R., Passvogel, T., et al. 2010, *A&A*, 518, L1
 Pinte, C., Ménard, F., Duchêne, G., & Bastien, P. 2006, *A&A*, 459, 797
 Pinte, C., Harries, T. J., Min, M., et al. 2009, *A&A*, 498, 967
 Pinte, C., Woitke, P., Ménard, F., et al. 2010, *A&A*, 518, L126
 Poglitsch, A., Waelkens, C., Geis, N., et al. 2010, *A&A*, 518, L2
 Pollack, J. B., Hubickyj, O., Bodenheimer, P., et al. 1996, *Icarus*, 124, 62
 Preibisch, T., & Zinnecker, H. 1999, *AJ*, 117, 2381 [PZ99]
 Preibisch, T., Guenther, E., Zinnecker, H., et al. 1998, *A&A*, 333, 619
 Preibisch, T., Brown, A. G. A., Bridges, T., Guenther, E., & Zinnecker, H. 2002, *AJ*, 124, 404 [PBB2002]
 Riaz, B., Gizis, J. E., & Harvin, J. 2006, *AJ*, 132, 866
 van Dishoeck, E. F. 2006, *Proc. Nat. Acad. Sci.*, 103, 12249
 van Dishoeck, E. F., Kristensen, L. E., Benz, A. O., et al. 2011, *PASP*, 123, 138
 van Kempen, T. A., Green, J. D., Evans, N. J., et al. 2010, *A&A*, 518, L128
 Walter, F. M., Vrba, F. J., Mathieu, R. D., Brown, A., & Myers, P. C. 1994, *AJ*, 107, 692
 Weidenschilling, S. J. 1977, *Ap&SS*, 51, 153
 White, R. J., & Basri, G. 2003, *ApJ*, 582, 1109
 Williams, J. P., & Cieza, L. A. 2011, *ARA&A*, 49, 67
 Woitke, P., Kamp, I., & Thi, W.-F. 2009, *A&A*, 501, 383
 Woitke, P., Pinte, C., Tilling, I., et al. 2010, *MNRAS*, 405, L26
 Wright, E. L., Eisenhardt, P. R. M., Mainzer, A. K., et al. 2010, *AJ*, 140, 1868
 Wyatt, M. C. 2008, *ARA&A*, 46, 339

Appendix A: Observation list

Table A.1. Observations.

Name	Date/ObsID	Setting/instrument	Obs. time (s)
HIP 76310	1342215621	PacsPhoto, green	276
	1342215622	PacsPhoto, green	276
	1342191303	PacsLineSpec	1252
	2009-10-26	JCMT RxA	1200
	2011-02-18	JCMT RxA	1200
	2011-06-16	JCMT RxA	1200
HIP77815	1342189658	PacsPhoto	220
	1342215474	PacsPhoto, blue	276
	1342215475	PacsPhoto, blue	276
	2008-02-22	JCMT HARP	600
HIP77911	2011-04-15	JCMT RxA	1200
	1342189656	PacsPhoto	220
	1342214223	PacsLineSpec	3316
HIP 78099	1342215480	PacsPhoto, green	276
	1342215481	PacsPhoto, green	276
	2008-02-22	JCMT HARP	600
	2008-07-09	JCMT HARP	600
	1342215486	PacsPhoto, blue	276
HIP 78996	1342215487	PacsPhoto, blue	276
	1342215502	PacsPhoto, blue	558
HIP 79156	1342215503	PacsPhoto, blue	558
	1342215414	PacsPhoto, blue	558
HIP 79410	1342215415	PacsPhoto, blue	558
	1342215404	PacsPhoto, blue	276
HIP 79439	1342215405	PacsPhoto, blue	276
	1342215402	PacsPhoto, blue	558
	1342215403	PacsPhoto, blue	558
HIP 79878	1342216190	PacsLineSpec	3316
	1342215615	PacsPhoto, green	276
	1342215616	PacsPhoto, green	276
	1342216170	PacsLineSpec	3316
HIP 80088	1342215514	PacsPhoto, green	276
	1342215515	PacsPhoto, green	276
	1342216168	PacsLineSpec	3316
HIP 80130	1342215510	PacsPhoto, blue	276
	1342215511	PacsPhoto, blue	276
	1342215512	PacsPhoto, green	276
	1342215513	PacsPhoto, green	276
	2011-04-15	JCMT RxA	1200
RX J1600.7-2343	1342215496	PacsPhoto, blue	840
	1342215497	PacsPhoto, blue	840
	1342213760	PacsLineSpec	1252
ScoPMS 31	1342215638	PacsRangeSpec	8316
	1342216196	PacsLineSpec	3316
	1342215422	PacsPhoto, green	276
	1342215423	PacsPhoto, green	276
[PBB2002] J155624.8-222555	2011-02-13	JCMT RxA	1200
	1342189657	PacsPhoto	220
	1342215476	PacsPhoto, blue	276
	1342215477	PacsPhoto, blue	276
	1342215478	PacsPhoto, green	276
	1342215479	PacsPhoto, green	276
[PBB2002] J155706.4-220606	1342215466	PacsPhoto, blue	276
	1342215467	PacsPhoto, blue	276
	1342215468	PacsPhoto, green	276
	1342215469	PacsPhoto, green	276
	2008-02-22	JCMT HARP	600
[PBB2002] J155729.9-225843	1342214222	PacsLineSpec	3316
	1342215488	PacsPhoto, blue	276
	1342215489	PacsPhoto, blue	276
	1342215490	PacsPhoto, green	276
	1342215491	PacsPhoto, green	276
[PBB2002] J155829.8-231007	1342203460	PacsLineSpec	1660
	1342215492	PacsPhoto, blue	276

Table A.1. continued.

Name	Date/ObsID	Setting/instrument	Obs. time (s)
	1342215493	PacsPhoto, blue	276
	1342215494	PacsPhoto, green	276
	1342215495	PacsPhoto, green	276
	2011-02-18	JCMT RxA	1200
[PBB2002] J160210.9-200749	1342215434	PacsPhoto, blue	276
	1342215435	PacsPhoto, blue	276
[PBB2002] J160245.4-193037	1342214580	PacsPhoto, blue	276
	1342214581	PacsPhoto, blue	276
	2008-02-22	JCMT HARP	600
[PBB2002] J160357.9-194210	1342214226	PacsLineSpec	3316
	1342215432	PacsPhoto, blue	276
	1342215433	PacsPhoto, blue	276
	2008-07-09	JCMT HARP	600
[PBB2002] J160525.5-203539	1342215458	PacsPhoto, blue	276
	1342215459	PacsPhoto, blue	276
	1342215460	PacsPhoto, green	276
	1342215461	PacsPhoto, green	276
	2008-07-09	JCMT HARP	600
[PBB2002] J160532.1-193315	1342215637	PacsLineSpec	1252
	1342215424	PacsPhoto, blue	276
	1342215425	PacsPhoto, blue	276
	1342215426	PacsPhoto, green	276
	1342215427	PacsPhoto, green	276
[PBB2002] J160545.4-202308	1342216198	PacsRangeSpec	8316
	1342216197	PacsLineSpec	3316
	1342215438	PacsPhoto, blue	276
	1342215439	PacsPhoto, blue	276
	1342215440	PacsPhoto, green	276
	1342215441	PacsPhoto, green	276
	2011-02-13	JCMT RxA	1200
[PBB2002] J160600.6-195711	1342215736	PacsLineSpec	3316
	1342215428	PacsPhoto, blue	276
	1342215429	PacsPhoto, blue	276
	1342215430	PacsPhoto, green	276
	1342215431	PacsPhoto, green	276
[PBB2002] J160622.8-201124	1342215442	PacsPhoto, blue	276
	1342215443	PacsPhoto, blue	276
	1342215444	PacsPhoto, green	276
	1342215445	PacsPhoto, green	276
[PBB2002] J160643.8-190805	1342215410	PacsPhoto, blue	276
	1342215411	PacsPhoto, blue	276
	1342215412	PacsPhoto, green	276
	1342215413	PacsPhoto, green	276
[PBB2002] J160702.1-201938	1342215448	PacsPhoto, green	276
	1342215449	PacsPhoto, green	276
	1342215446	PacsPhoto, blue	276
	1342215447	PacsPhoto, blue	276
[PBB2002] J160801.4-202741	1342215450	PacsPhoto, blue	276
	1342215451	PacsPhoto, blue	276
	1342215452	PacsPhoto, green	276
	1342215453	PacsPhoto, green	276
[PBB2002] J160823.2-193001	1342215416	PacsPhoto, green	276
	1342215417	PacsPhoto, green	276
	1342216195	PacsRangeSpec	8316
	1342216193	PacsLineSpec	3316
	1342216194	PacsLineSpec	3316
	2011-02-02	JCMT RxA	1200
[PBB2002] J160827.5-194904	1342215420	PacsPhoto	276
	1342215418	PacsPhoto, blue	276
	1342215419	PacsPhoto, blue	276
	1342215421	PacsPhoto, green	276
[PBB2002] J160900.0-190836	1342215406	PacsPhoto, blue	276
& [PBB2002] J160900.7-190852	1342215407	PacsPhoto, blue	276
	1342215408	PacsPhoto, green	276
	1342215409	PacsPhoto, green	276
[PBB2002] J160900.0-190836	2011-02-25	JCMT RxA	1200
[PBB2002] J160953.6-175446	1342215394	PacsPhoto, blue	276

Table A.1. continued.

Name	Date/ObsID	Setting/instrument	Obs. time (s)
	1342215395	PacsPhoto, blue	276
	1342215396	PacsPhoto, green	276
	1342215397	PacsPhoto, green	276
[PBB2002] J160959.4-180009	1342215398	PacsPhoto, green	276
	1342215399	PacsPhoto, green	276
	1342216188	PacsLineSpec	3316
	1342216189	PacsRangeSpec	8316
	2011-02-25	JCMT RxA	1200
[PBB2002] J161115.3-175721	1342215393	PacsPhoto, green	276
	1342215390	PacsPhoto, blue	276
	1342215391	PacsPhoto, blue	276
	1342215392	PacsPhoto, green	276
[PBB2002] J161420.3-190648	1342215400	PacsPhoto, green	276
	1342215401	PacsPhoto, green	276
	1342216191	PacsLineSpec	3316
	1342216192	PacsRangeSpec	8316
	2011-02-02	JCMT RxA	1200
[PZ99] J153557.8-232405	1342189592	PacsPhoto	220
	1342215623	PacsPhoto, blue	276
	1342215624	PacsPhoto, blue	276
	1342215625	PacsPhoto, green	276
	1342215626	PacsPhoto, green	276
	2008-02-22	JCMT HARP	600
	2011-02-13	JCMT RxA	1200
[PZ99] J154413.4-252258	1342189659	PacsPhoto	220
	1342215482	PacsPhoto, blue	276
	1342215483	PacsPhoto, blue	276
	1342215484	PacsPhoto, green	276
	1342215485	PacsPhoto, green	276
	2008-02-22	JCMT HARP	600
[PZ99] J160108.0-211318	1342215464	PacsPhoto, blue	276
	1342215465	PacsPhoto, blue	276
	2008-02-22	JCMT HARP	600
[PZ99] J160357.6-203105	1342214227	PacsLineSpec	3316
	1342216199	PacsRangeSpec	8316
	1342215436	PacsPhoto, green	276
	1342215437	PacsPhoto, green	276
	2011-02-26	JCMT RxA	1200
[PZ99] J160421.7-213028	1342215462	PacsPhoto, green	276
	1342215463	PacsPhoto, green	276
	1342215680	PacsRangeSpec	10279
	1342215681	PacsLineSpec	3316
	2008-03-09	JCMT HARP	600
	2010-05-18	JCMT HARP	1200
	2010-05-19	JCMT HARP	500
	2010-05-20	JCMT HARP	3000
	2009-07-27	JCMT RxA	1200
[PZ99] J160654.4-241610	1342215501	PacsPhoto, green	276
	1342215498	PacsPhoto, blue	276
	1342215499	PacsPhoto, blue	276
	1342215500	PacsPhoto, green	276
[PZ99] J160856.7-203346	1342215454	PacsPhoto, blue	276
	1342215455	PacsPhoto, blue	276
	1342215456	PacsPhoto, green	276
	1342215457	PacsPhoto, green	276
[PZ99] J161402.1-230101	1342215506	PacsPhoto, blue	276
	1342215507	PacsPhoto, blue	276
	1342215508	PacsPhoto, green	276
	1342215509	PacsPhoto, green	276
[PZ99] J161411.0-230536	1342215504	PacsPhoto, green	276
	1342215505	PacsPhoto, green	276
	1342216169	PacsLineSpec	3316
	2011-02-03	JCMT RxA	1200
	2011-06-27	JCMT RxA	1200

Appendix B: [CII] maps

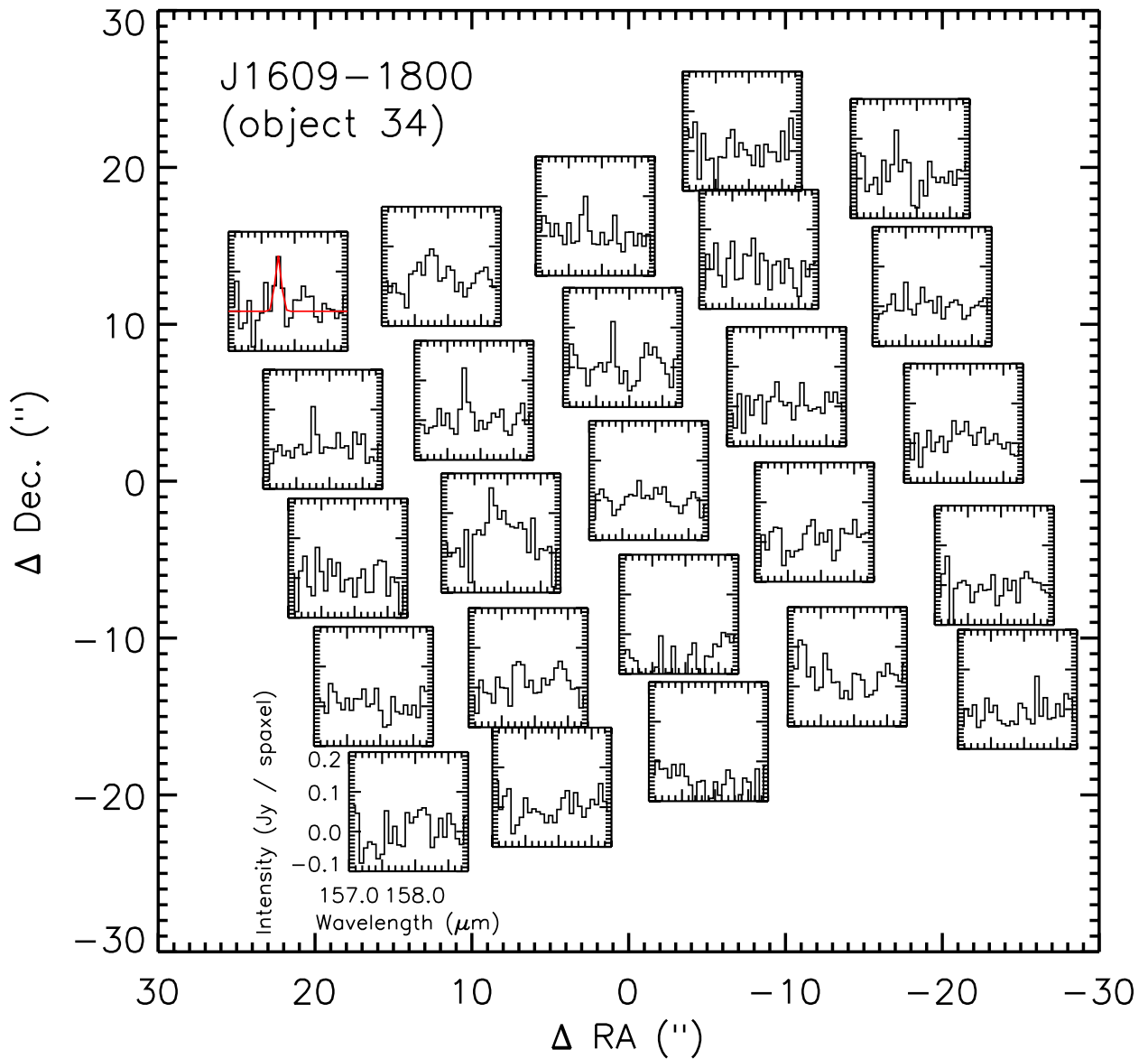


Fig. B.1. Footprint continuum-subtracted spectra of [CII] $157.7 \mu\text{m}$ emission toward object 34, without aperture correction. Each box is centered at the reported position of the spaxel for the observation. Red lines show Gaussian fits to spectra which are detected at the 3σ level or higher (typical limit is $\sim 2.5 \times 10^{-18} \text{ W m}^{-2}$ per spaxel). Additional spaxels may have emission at $\sim 2\sigma$ level.

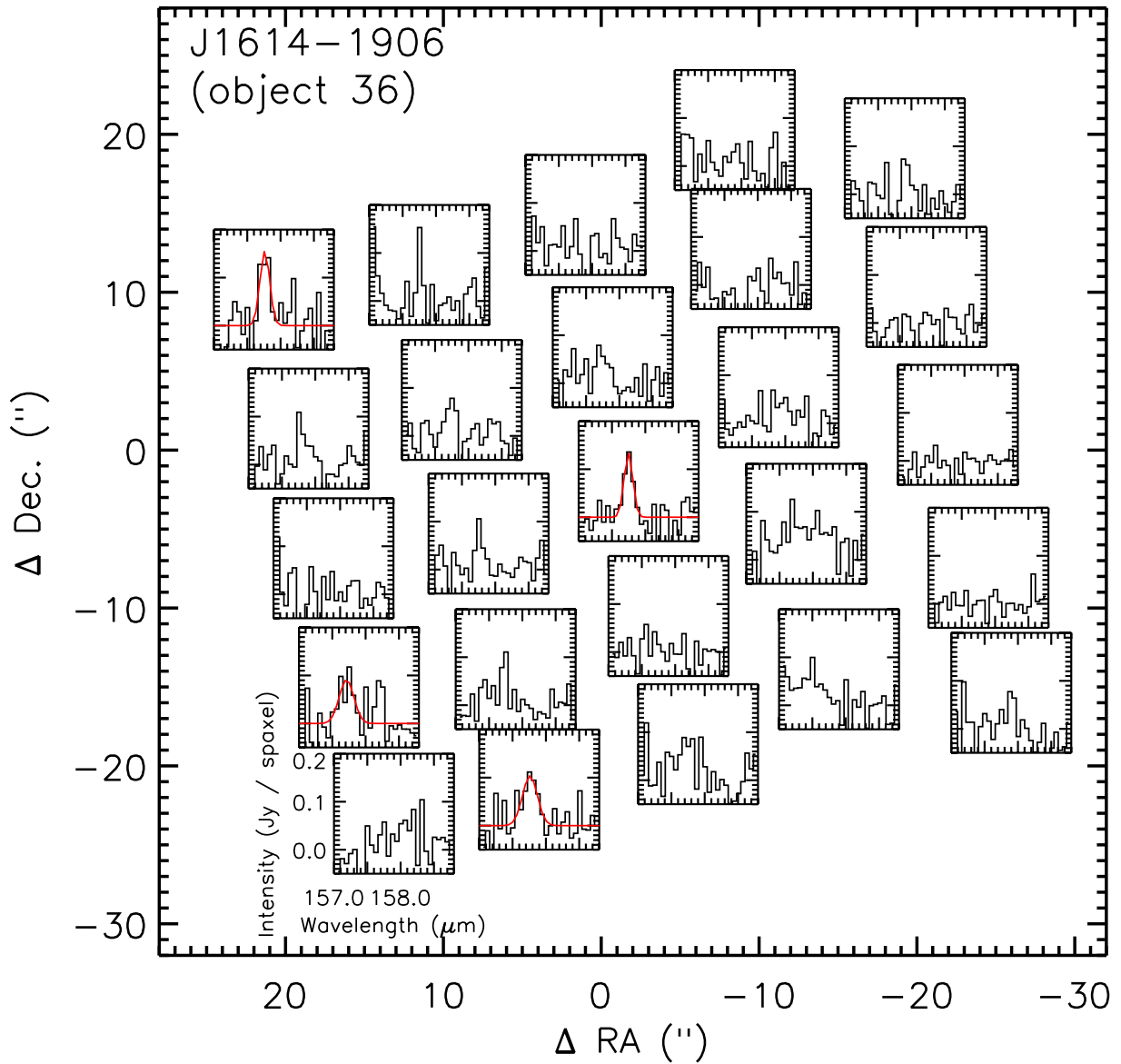


Fig. B.2. As Fig. B.1, but for J1614-1906.

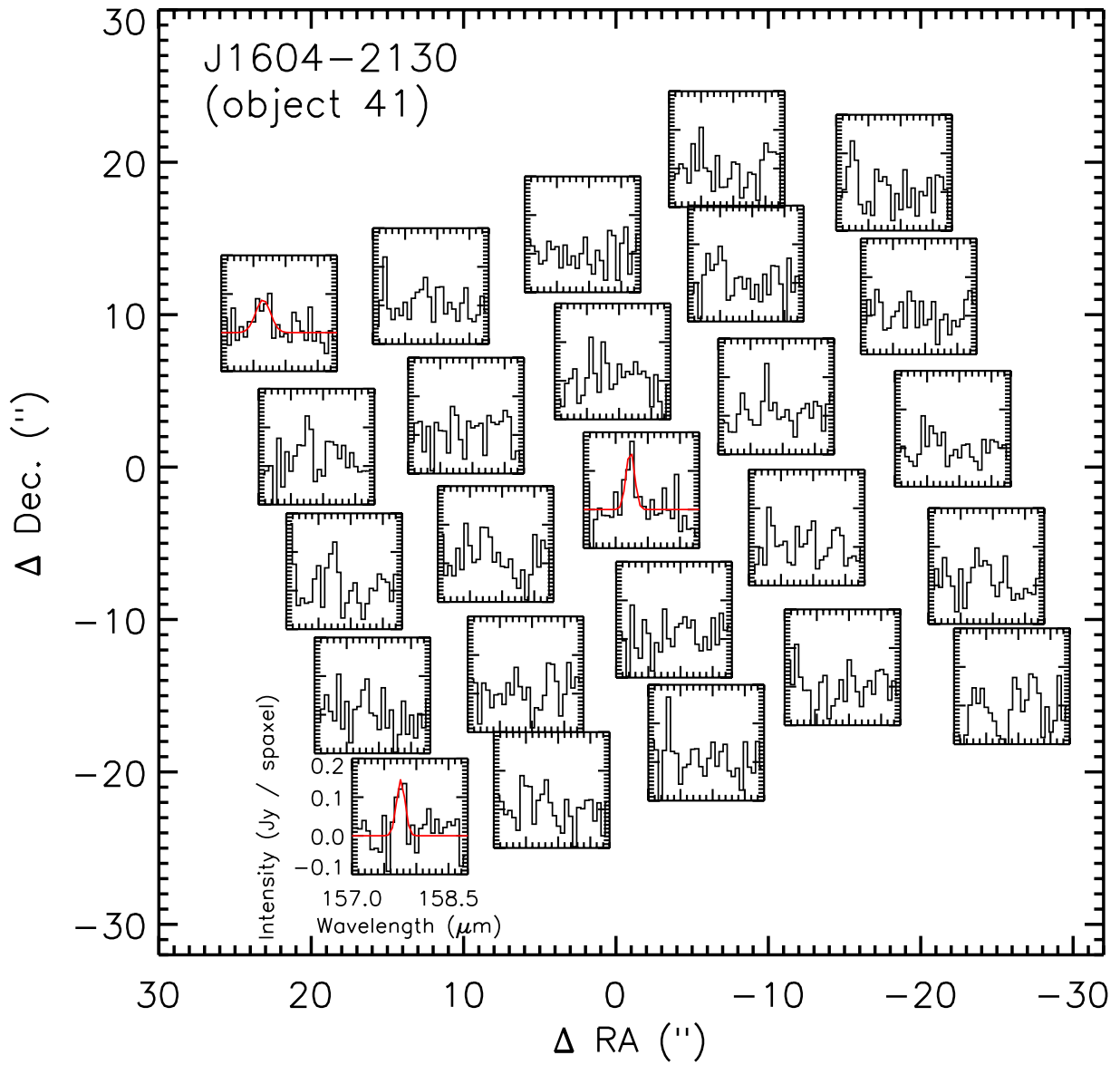


Fig. B.3. As Fig. B.1, but for J1604-2130.

Appendix C: Parameter covariance

To confirm the sensitivities to our parameters implied by the probability distributions shown in Fig. 7 and to test the assumptions of our fiducial model, we varied the parameters of the Upper Scorpius median model to examine changes in the SED. We set the values of the free parameters to reflect the size of the explored ranges shown in Fig. 7, generated SEDs for these modified values, and calculated the ratio of the modified SEDs to that of the adopted median model (Fig. C.1).

While each free parameter has effects throughout the SED, we discuss the wavelengths at which the effects are largest. The free parameter with the least overall effect is α . Varying its value by ± 0.4 changes fluxes at wavelengths from $\sim 20 \mu\text{m}$ to 3 mm by 10–20%, with smaller changes at shorter wavelengths. Variations in dust mass have, as expected, a nearly linear effect on the mm-SED. However, factor of 10 variations in dust mass still cause factor of 2 variations in the SED at 70–160 μm . β and H_{100} have complementary effects at the 20–40% level for variations of ± 0.05 and ± 2 , respectively, and R_{in} causes factor of 2 changes throughout the infrared SED for a factor of 10 increase in its value.

We also tested three key assumptions of the models, that of fixing the minimum and maximum dust grain sizes ($a_{\text{min}} = 0.01 \mu\text{m}$ and $a_{\text{max}} = 3600 \mu\text{m}$, respectively), and the outer radius of the disk ($R_{\text{out}} = 100 \text{ AU}$). A factor of 100 increase in a_{min} leads to a few percent decrease in flux at *J*, *H*, and *K* bands, $\sim 10\%$ flux increase at $\sim 5\text{--}50 \mu\text{m}$, and $\sim 10\%$ decrease at longer wavelengths. Decreasing a_{min} has negligible effects. Increasing a_{max} by a factor of 100 for a constant dust mass leads to a factor of ~ 5 drop in model fluxes from 400 to 1000 μm , an effect smoothly increasing from about 30% drop in flux at 70 μm . This change is due to shifting dust mass into large, undetectable $\sim 10 \text{ cm}$ pebbles and the corresponding decrease in opacity. Decreasing a_{max} by a factor of 100, on the other hand, leads to a similar factor of ~ 10 drop in the SED at long wavelengths, but a comparatively slight factor of 2 increase in flux at 100 to 200 μm . Increasing and decreasing R_{out} by a factor of 2 has an effect ranging from $\sim 10\%$ at 100 μm to 20% at 1000 μm .

We can then consider how variations in these parameters impact each other. The simplest case to examine is that of impacts on the dust mass, which varies in essentially a one-to-one fashion with the millimeter flux due to low opacity. Variation of the magnitude explored here for α , β , H_{100} , and a_{min} (± 0.4 , ± 0.05 , ± 2 , and $\times 100$, respectively) lead to $\sim 10\text{--}20\%$ variations across a wide range of the SED. These would in turn lead to at most 10–20% variations in dust mass, and could be less since variations in the other parameters can together compensate. An increase in M_{dust} for a given observed SED could be driven by large increases or decreases in α , or by decreasing values of β or H_{100} . Conversely, increasing values of β or H_{100} , both of which would suggest more effective heating at large radii, would require a decrease in dust mass. None of these parameters could

singly vary with mass, however, due to the effects they have at short wavelengths.

Several parameters, however, primarily affect the long wavelength SED, and thus their impact on the dust mass can be more directly examined. For a given observed millimeter flux, a factor of 100 increase in a_{max} or factor of 2 increase in R_{out} will require a factor of 5 or a 20% increase in the disk dust mass, respectively.

In order to carry out a broader exploration of the parameter space than is possible with either the single 5D-grid used in Sect. 6.1 to generate the parameter probability distributions or with a single GA search, we have carried out 10 GA searches of 10 generations each for the Upper Scorpius median disk. Each independent search begins in a random region of the parameter space, thus ensuring a broader sampling.

Using the models from all 10 searches, we have constructed 2D χ^2 maps comparing the two parameters that dominate variation in the disk opacity, M_{dust} and α , and the parameters which dominate variation in the interception of the stellar luminosity, H_{100} and β (Fig. C.2). The number of bins in each dimension (15) was chosen to ensure a mean of ~ 50 points per bin. Each model's contribution to its bin is weighted according to its likelihood based on 10 degrees of freedom. Comparisons with R_{in} showed no significant covariances, with 99% likelihood contours extending uniformly from values of 0.03 to 0.1 AU.

The shapes of the χ^2 spaces reinforce our discussion of parameter covariance. M_{dust} and α are positively correlated to increasing values of α , while there is no or a slight negative correlation to decreasing values of α (Fig. C.2, upper left). The surface density distribution parameter, α , appears poorly constrained by our observations (upper right), as was previously shown by the 1D probability distribution. The negative correlation between H_{100} and M_{dust} is consistent with the idea that the observed long-wavelength flux is determined by both the temperature and mass of the outer disk, and these two parameters are the primary drivers of those properties. The strong positive correlation between H_{100} and β suggests that low infrared fluxes require a relatively low scale height in the inner disk region. Increases in these two parameters will primarily drive increased heating in the outer disk, which can be compensated for by a decreased disk mass.

Our adopted parameters lie within the 99% contours in all cases. However, comparison of these 2D explorations of the parameter space with the results of single GA searches and with the 1D probability distribution produced from the uniformly sampled 5D grid (Sect. 6.1) suggest improvements for future work. The use of several short GA searches achieves wider sampling of the parameter space, due largely to the start of the searches in random locations. The convergence of several searches to a limited range of values lends confidence that a global χ^2 minimum has been found. The combination of these results can then lead to adoption of a better representative model, which in turn will serve as an improved central point for a uniform grid.

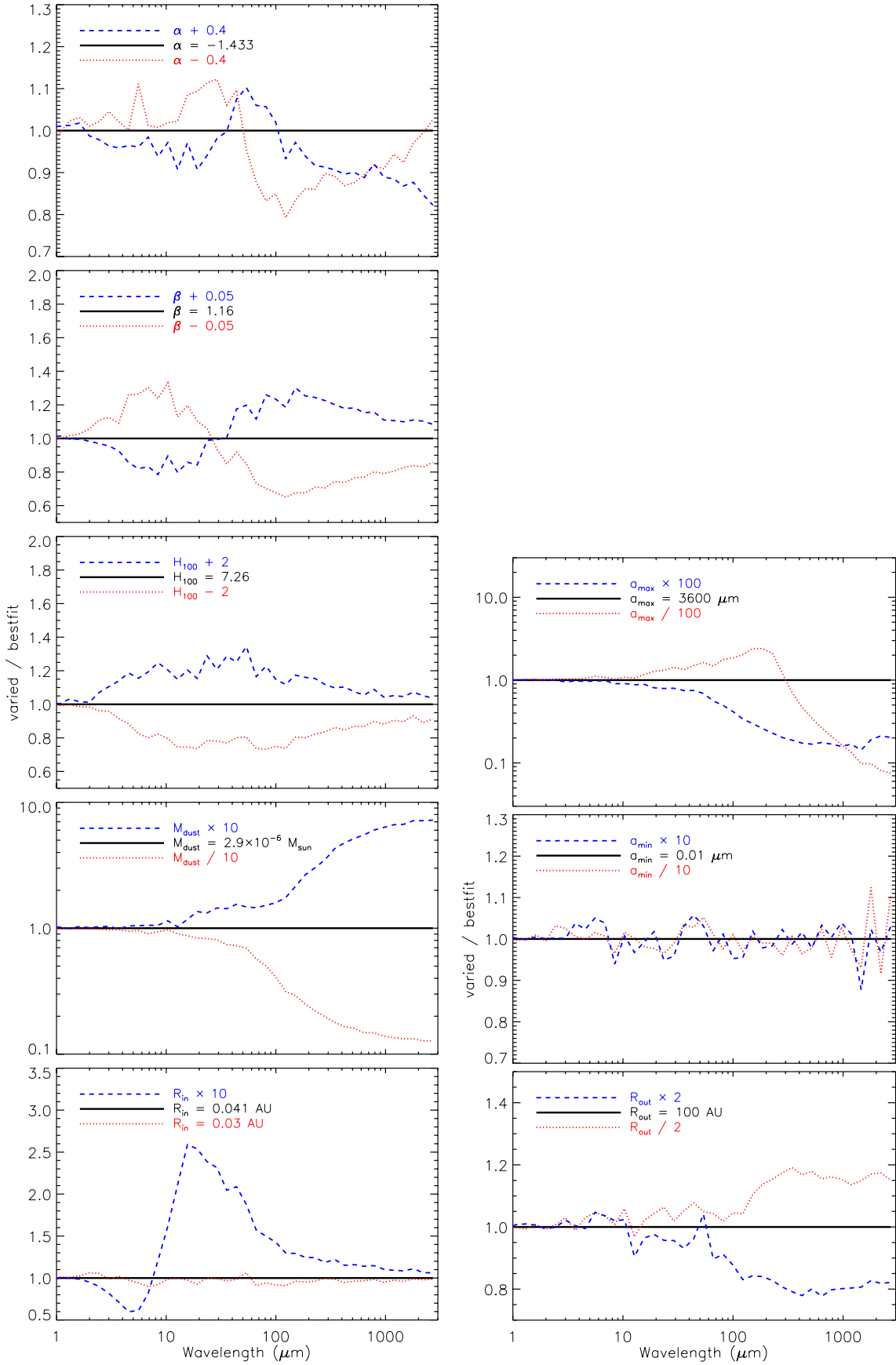


Fig. C.1. Ratio of SEDs for models with varied parameters compared to the adopted parameters for the Upper Scorpius median disk. The variation of the SED with the free parameters is shown on the left, while the variation of three selected fixed parameters is shown on the right.

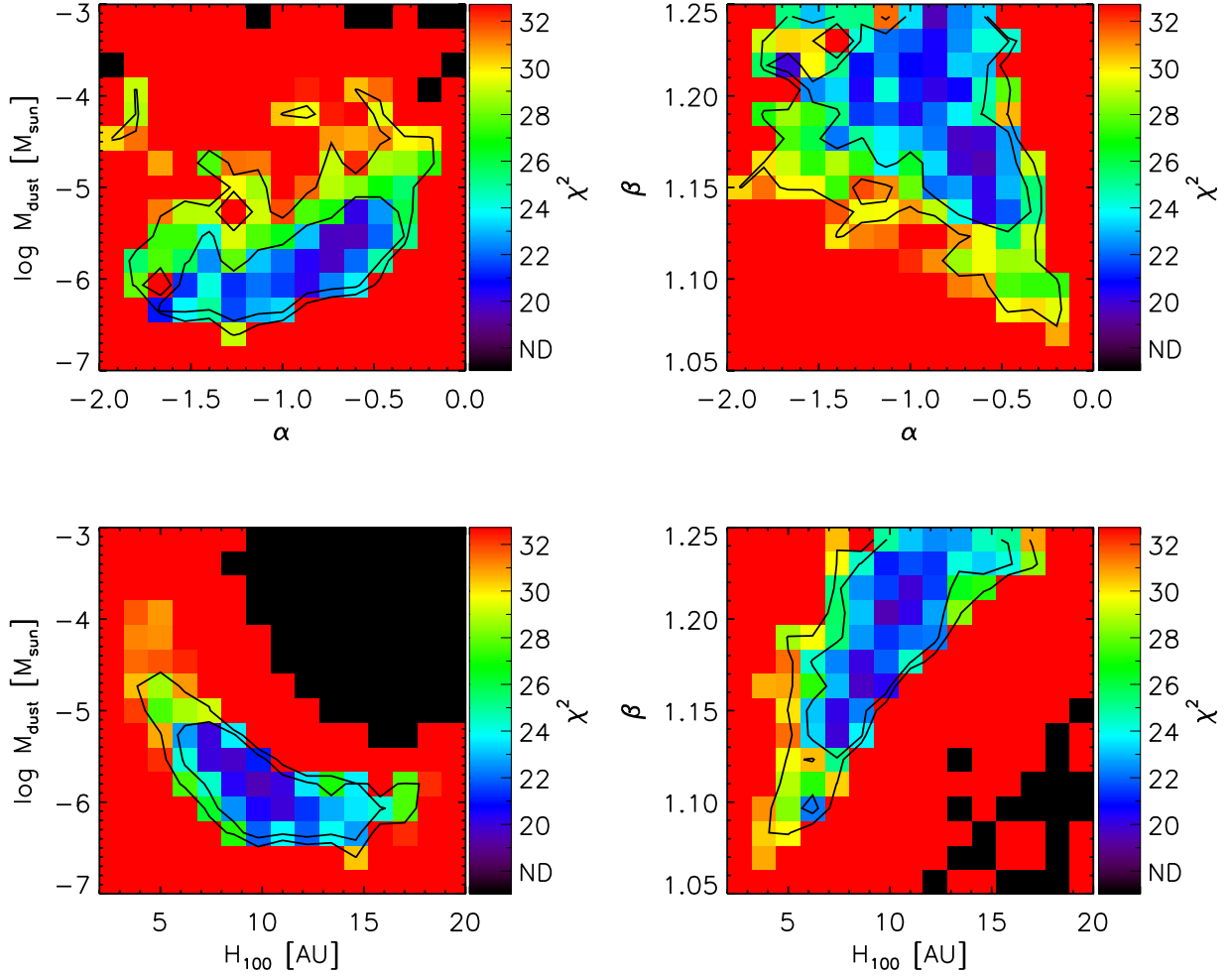


Fig. C.2. 2-dimensional χ^2 maps for M_{dust} , α , H_{100} and β , generated from 10 genetic-algorithm parameter searches of the Upper Scorpius median disk. Contours are drawn at levels of 4.6 and 9.21 higher than the minimum χ^2 , corresponding to the 90% and 99% probability boundaries. Black regions have sample numbers too low ($n < 10$) for calculation of χ^2 value.