



Universiteit
Leiden
The Netherlands

The effect of prosody awareness training on the performance of consecutive interpretation by Farsi-English interpreter trainees: an experimental study

Yenkimaleki, M.; Heuven, V.J. van

Citation

Yenkimaleki, M., & Heuven, V. J. van. (2016). The effect of prosody awareness training on the performance of consecutive interpretation by Farsi-English interpreter trainees: an experimental study. *Asia Pacific Translation And Intercultural Studies*, 3(3), 235-251.
doi:10.1080/23306343.2016.1233930

Version: Not Applicable (or Unknown)

License: [Leiden University Non-exclusive license](#)

Downloaded from: <https://hdl.handle.net/1887/44467>

Note: To cite this publication please use the final published version (if applicable).



The effect of prosody awareness training on the performance of consecutive interpretation by Farsi-English interpreter trainees: an experimental study

Mahmood Yenkimaleki & Vincent J. van Heuven

To cite this article: Mahmood Yenkimaleki & Vincent J. van Heuven (2016): The effect of prosody awareness training on the performance of consecutive interpretation by Farsi-English interpreter trainees: an experimental study, Asia Pacific Translation and Intercultural Studies, DOI: [10.1080/23306343.2016.1233930](https://doi.org/10.1080/23306343.2016.1233930)

To link to this article: <http://dx.doi.org/10.1080/23306343.2016.1233930>



Published online: 06 Oct 2016.



Submit your article to this journal [↗](#)



View related articles [↗](#)



View Crossmark data [↗](#)

The effect of prosody awareness training on the performance of consecutive interpretation by Farsi-English interpreter trainees: an experimental study

Mahmood Yenkimaleki^a and Vincent J. van Heuven^{a,b}

^aDepartment of Linguistics, Leiden University, The Netherlands; ^bDepartment of Applied Linguistics, University of Pannonia, Hungary

ABSTRACT

This study investigates the effect of prosody awareness training on the performance of Farsi-English interpreter trainees. Two groups of student interpreters were formed. All were native speakers of Farsi who studied English translation and interpreting at the BA level at the State University of Arak, Iran. Participants were assigned to groups at random, but with equal division between genders (8 female and 8 male students in each group). At the beginning of the program, all the participants took a pretest of general English proficiency. No significant differences in English language skills (TOEFL scores) could be established between the groups. Three expert raters assessed quality measures of interpreting performance in both a pretest and a post-test. All rating scales that pertain to prosodic aspects in the trainees' interpreting performance, proved susceptible to the explicit teaching of prosody. The results of the study showed that explicit teaching of prosody statistically did have a positive effect on the overall interpreting performance by Farsi-English interpreter trainees. The pedagogical implications of the present study would pertain to interpreting programs all over the world. Course developers should take these results into considerations and include contrastive prosody in the textbooks for interpreting programs.

KEYWORDS

Prosody teaching; awareness training; curriculum; TOEFL proficiency; interpreting programs

1. Introduction

Although pronunciation teaching has received a lot of attention in the field of applied linguistics, there are still remarkably few studies paying attention to the effects of explicit instruction of prosody in the teaching of English as a Foreign Language (EFL) (Derwing and Munro 2005; reported in Koike 2014). Several methodological perspectives are available for the explicit teaching of pronunciation (Derwing and Munro 2005; Foote, Holtby, and Derwing 2011) but instructors often do not feel comfortable explicitly teaching pronunciation (Burns 2006; Baker 2011; Foote, Holtby, and Derwing 2011; reported in Koike 2014), either because they find it difficult to listen analytically to the students' pronunciation, identify errors, and suggest remedies, or because they give priority to other aspects of communicative

competence such as the acquisition of vocabulary and morphosyntax. Prosody awareness training is the most marginalized activity in the training of interpreters though prosody plays a key role in communicating the message. The neglect of prosody awareness training for interpreters may be due to the (apparent) complexity of this issue and the misconception about what content should be taught and how this could be done (Suwartono 2014). By prosody, we understand the ensemble of properties of speech that cannot be derived from the mere sequence of phonemes that make up a spoken sentence. Prosody then includes such phenomena as lexical tone, stress at the word and at the sentence level, boundary marking and intonation. All these suprasegmental phenomena are characteristics of linguistic units larger than a single vowel or consonant, i.e. larger than a segment (Lehiste 1970; van Heuven and Sluijter 1996; Nooteboom 1997). Although words are recognized mainly from the sequence of segments, word-level prosody assumes a crucial role in the recognition process when the segmental quality is poor (as is typically the case in foreign-accented speech (e.g. van Heuven 2008; Cutler 2012). Moreover, sentence prosody is often indispensable in the signaling of the speaker's intention (e.g. O'Neal 2010). Although quite probably overstating their case, some authors (e.g. Suwartono 2014) claim that teaching suprasegmental features should take priority over segmental properties in teaching EFL. In the Iranian educational system, segmental features are taught and practiced in training interpreters more intensely than suprasegmentals.

Intelligibility and comprehensibility are fundamental aspects of second language pronunciation (Derwing, Diepenbroek, and Foote 2012). In this regard, prosodic features are very important in making the speech intelligible. Research shows that prosodic feature errors are barriers to the intelligibility of speech (Munro and Derwing 1995). Studies show that awareness training is an important factor contributing to second-language acquisition (Venkatagiri and Levis 2007; Robinson et al. 2012). Schmidt (2001, 2010) points out that awareness raising is fundamentally necessary in learning second-language linguistic features. Also supporting this perspective, Pennington (1998) claims that explicit instruction of phonological rules makes learners aware of the problems in their own pronunciation of the foreign language. This view is supported by other scholars who all agree explicit instruction and awareness training are effective components in the teaching of English as foreign language (Norris and Ortega 2000; Spada and Tomita 2010; reported in Koike 2014). Derwing and Munro (2005) also state that phonological forms should be taught and explained explicitly so that foreign-language learners perceive the differences between their own pronunciation and that of native speaker models.

Research shows the positive effects of explicit instruction of phonological rules (e.g. Neufeld 1977; Murakawa 1981; de Bot and Mailfert 1982; de Bot 1983; Leather 1990; Champagne-Muzar, Schneiderman, and Bourdages 1993; Pennington 1998; Ahrens 2004; Derwing and Munro 2005; Venkatagiri and Levis 2007; Foote, Holtby, and Derwing 2011; Derwing, Diepenbroek, and Foote 2012; Robinson et al. 2012; Yenkimaleki and van Heuven 2013; Koike 2014; Suwartono 2014; Yenkimaleki and van Heuven 2016a, 2016b, 2016c). According to Ahrens (2004) the importance of prosody for an interpreter in the bilingual communication between two parties would be the same as in monolingual communication of message. She also states that since the prosodic features which exist in the source language carry an important part of the message that should be delivered in target language, the prosodic features in the target language would be of the utmost importance in rendering the message to the audience. Gut, Trouvain, and Barry (2007) argue that the goal of

instructors in different academic settings should be to make second-language learners perceive and produce the prosodic features of the target language adequately. Considering the needs of the second-language learners, it can be targeted to comprehensible communicative abilities or near-native like language competence. Instructors take advantage of different methodologies such as teaching theoretical aspects of prosody, consciousness raising of language structure, production exercises, and perceptual training. Gut, Trouvain, and Barry (2007) claim that researchers produce theories while teachers practice them in class so that their experiences tend to be different. An exchange of ideas between the two parties, i.e. the theory makers and the practitioners, is dearly needed. Unfortunately formal settings in which the various professional groups who are concerned with second language prosody exchange perspectives are largely lacking at this time. Jackson and O'Brien (2011) point out that studies on the relationship between prosody, second-language speech production, and second-language comprehension were not enough and this area demands more investigation. The results of these studies which have been done so far should be considered as introductory points. Therefore, this area demands much more attention by having comprehensive experimental studies because of the importance of message communication. The systematic studies can provide us with enough information on how interpreters can take advantage of prosodic features in message perception and communication since there is a relationship between prosody and meaning. Also, the result of such studies in this area would help second-language learners in following different issues in the foreign language classrooms by perceiving the instructions and outside of the classrooms as well when using language communicatively. Derwing, Munro, and Wiebe (1998) argue that their experiment indicates that awareness training resulted in better understanding of utterances by second-language learners who had instruction emphasizing prosodic feature of stress; moreover, these second-language learners could transfer their perceptual learning to the spontaneous production as well (reported in Field 2003, 1).

A significant perspective in current cognitive psychology would be that awareness is a fundamental aspect of learning. It has even been stated that it is impossible to have learning without conscious awareness (Brewer 1974; Lewis and Anderson 1985; Dawson and Schell 1987). Rutherford and Sharwood Smith (1985) assert that drawing the learner's attention to the formal properties of language raises consciousness and may therefore be advantageous in second-language learning.

Therefore, interpreting studies as a growing field, in order to apply efficient didactic methods in training qualified future interpreters, needs to consider awareness training of prosodic features of the source and target languages and include appropriate procedures of prosody teaching in the curriculum of training programs. This perspective demands systematic investigation of this issue within the specific context of interpreter training programs. Accordingly, the present study is done to elaborate this issue so that the results may be a stepping stone toward improving the curriculum for training the next generation of interpreters.

2. Research question

The effect of prosodic feature awareness training and the conscious knowledge of prosodic features on the performance of interpreters from Farsi into English has not been investigated systematically. The present experiment was set up to shed light on the potential importance of prosody in the training of future interpreters. The result of such study can lead to

modification of the curriculum for interpreter training through including exercises and materials about this issue in interpreting programs. The following research question was asked.

Does awareness training of prosodic features (stress at word and sentence level) from Farsi into English enhance the quality of consecutive interpretation performance for interpreter trainees?

3. Method

3.1. Participants

Thirty-two students of translation and interpreting studies at BA level at Arak University were chosen randomly. They were 16 male and 16 female students. They were divided into two classes that each incorporating 8 male and 8 female participants. Their age range was between 18 and 26 years old and they took part in all sessions of the program.

3.2. Procedures

The interpreter trainees who participated in the study were divided into two groups at random. One group was designated as the experimental group while the other was considered the control group. At the beginning of the program, all participants took a TOEFL test in order to establish that they were homogeneous. The test battery was the standard Longman's TOEFL English proficiency test, with separate modules testing the learner's (i) Listening comprehension, (ii) Reading comprehension, and (iii) Structure and writing skills.

Then, the control group and experimental group took a pretest on interpreting so that their level of expertise in interpreting was assessed prior to receiving any type of training. In the next stage, the control group received instruction and practice about the techniques of interpreting, different aspects of interpreting, and types of interpreting. The experimental group received not only the same instruction as provided to the control group (in less time, however) but also awareness training on prosodic features (stress at word and at sentence level) of English and their effect on their performance. The prosody awareness training targeted the differences between the stress systems of English and Farsi, at the word and sentence level, in a cognitive way. Theoretical explanation was given and immediately put into practice in exercises (a detailed account of contents of the awareness training program can be found in Yenkimaleki, [forthcoming](#)). Both experimental and control groups received exercises in interpreting by presenting authentic audio extracts. The experimental group received awareness training of prosodic features of English for 20 min each session and the control group received additional practice in consecutive interpreting through practical exercises. To receive feedback regarding the progress of teaching and to detect weaknesses in methodology, different types of formative test were administered in all the sessions. At the end of the program, a post-test with the same structure but with different items compared with the pretest was administered to both groups in order to establish whether the treatment (explicit teaching of English prosody) of the experimental group had been effective or not.

Six authentic audio extracts of IRIB (Islamic Republic of Iran Broadcasting) news cast in Standard Farsi were chosen as test materials for the interpretation task. Through random sampling four of these were selected for the pretest. Each fragment lasted 30 s. The other two fragments were used as the post-test. The procedure used in the pretest and the

post-test was the same. Students were seated in sound-proofed half-open cubicles which attenuated ambient noise well enough to yield clean recordings. They listened to the source texts being played to them over a loudspeaker at a comfortable listening level. After every 30 s fragment, they were allowed one minute to record an interpretation of the source text in English. Recordings were made directly onto a digital computer through individual, table-mounted microphones. As part of the one-minute intervals, and also earlier while listening to the stimulus text, participants were allowed to make written notes (as is not uncommon in consecutive interpreting).

The participants' performance, both in the pretest and in the post-test, was scored applying the criteria adapted from Sawyer (2004). These are, and see Table 1:

- (1) *Accuracy*: Interpreters should be faithful all the time to the meaning of source language. It means that an optimal and complete message should be transferred to the target language such that the content and intent of the source language should be preserved without omission or distortion. Accuracy of interpretation should be a primary concern for interpreters. Discrepancies in meaning and intention between source and target text are not acceptable.
- (2) *Omission*: Jones (2014) pointed out that interpreters in some situations have insufficient time to render exact and complete messages. In such situations, interpreters may omit part of the source text and yet deliver a coherent message to the audience. To do so, interpreters may intentionally omit part of the source language and concentrate on transferring the gist of the message. As a consequence, some omissions are considered errors but in certain complicated situations they are unavoidable, e.g. when the interpreter suffers from cognitive overload. In this study omissions were not counted against the interpreter as long as the interpretation preserved the content and intent of the source language; if not, they were scored as errors.
- (3) *Overall coherence*: Coherence is the extent to which the interpreter's output is meaningful and purposeful. Message coherence is a key aspect in interpretation, which includes conceptual connectedness, evaluative and dialogical consistency and textual relatedness.
- (4) *Grammar*: In this study, the attempt was made to evaluate the speech production of the participants observing the standard structural rules of English.
- (5) *Expression*: Utterances should be appropriate regarding formality and informality with the target audience. Moreover, the utterances should be a manifestation of appropriate use of target language.

Table 1. Eleven evaluation criteria subdivided into three domains used in the quality judgment of interpreting performance. Weights add up to 110. After Sawyer (2004).

Meaning		Language use		Presentation	
Accuracy	20	Grammar	7	Pace	10
Omissions	15	Expression	7	Voice	10
Overall coherence	10	Word choice	7	Accentuation	10
		Terminology	7		
		Foreign accent	7		

- (6) *Word choice*: The choice of words in the target language should be done according to the genre of source language. Moreover, in interpreting the expectations of the audience (in relation to the social class they belong to) should be taken into account as well.
- (7) *Terminology*: Interpreters should be familiar with technical terms of the subject matter that they are interpreting. In this study, the attempt was made to see to what extent the participants were choosing the technical terms when transferring the message.
- (8) *Foreign accent*: Since the interpreter's intelligibility will depend on the quality of his/her pronunciation of the target language, the strength of the interpreter's foreign accent in English was judged.
- (9) *Pace*: It is widely recognized that a rate of delivery of speech between 100 and 120 words per minute (wpm) is optimal for English speech (Gerver 1969; Seleskovitch 1978; Lederer 1981; as cited in Chang 2005, 12). In the present study, an intuitive judgment was made of how optimal the interpreter's rate of delivery was, i.e. neither very slow nor so fast that intelligibility would be compromised.
- (10) *Voice*: Generally an interpreter with pleasant and relaxed voice is more appreciated than one with a strained or nervous voice. An attempt was therefore made to judge globally to what extent the voice of the participants is appropriate for transferring the message.
- (11) *Accentuation*: It is used to signal the information state of discourse constituents. English uses accentuation to indicate information structure. It also plays a crucial role in spoken discourse processing in communication. As a first approximation, listeners consider a sentence appropriate when new information is accented and old information is unaccented (Birch and Garnsey 1995; reported in Li, Hagoort, and Yang 2008). Appropriate accentuation speeds up sentence processing by listeners when processing discourse (Cutler 1976; Bock and Mazzella 1983; Terken and Nootboom 1987; van Donselaar and Lentz 1994; reported in Li, Hagoort, and Yang 2008). In the present study, the raters judged the appropriateness of the placement of sentence stresses (accentuation).

3.3. Data analysis

To see whether the difference between the mean scores of the experimental and control groups is statistically meaningful and to see whether prosodic feature awareness training did have higher impact on test components specifically addressing prosody, t-tests were performed. The correlation between pretest proficiency test scores and post-test scores was established by the Pearson correlation coefficient.

4. Results

At the beginning of the program, all the participants took a pretest of general English proficiency so that we can see whether the participants form a homogeneous group or not. Table 2 shows the participants' TOEFL scores.

Table 2. Raw component and overall scores on TOEFL proficiency test obtained by control (left-hand part) and experimental groups (right-hand part). Within each group, subjects are listed in descending order of the overall TOEFL score.

Nr.	Control group						Experimental group						
	ID	Gend.	List. comp	Struct. & writing	Read. comp	Overall TOEFL	Nr.	ID	Gend.	List. comp	Struct. & Writing	Reading comp	Overall TOEFL
1.	AIB	M	62	65	60	623.3	1.	SaR	M	67	65	58	633.3
2.	FaP	F	57	65	58	600	2.	FaF	F	62	58	55	583.3
3.	VaH	M	60	61	58	596.6	3.	AmS	M	54	60	57	570
4.	NeJ	F	57	63	58	593.3	4.	MoS	F	57	58	55	566.6
5.	AmR	M	54	58	65	590	5.	HoY	M	52	60	57	563.3
6.	AtR	F	57	58	56	570	6.	FrN	F	51	56	59	553.3
7.	ReR	M	54	61	54	563.3	7.	AmN	M	54	56	53	543.3
8.	MeR	F	54	57	58	563.3	8.	SaS	F	52	56	53	536.6
9.	HaM	M	53	58	53	546.6	9.	FaM	M	45	56	54	516.6
10.	AzD	F	51	52	50	510	10.	AzS	F	50	54	49	510
11.	HoK	M	49	53	48	500	11.	MaM	M	45	54	53	506.6
12.	MaL	F	48	47	43	460	12.	NeN	F	48	52	49	496.6
13.	SIS	M	42	46	48	453.3	13.	HaM	M	49	50	48	490
14.	ZoA	F	41	49	46	453.3	14.	SiM	F	47	44	51	487.3
15.	SaG	M	45	47	43	450	15.	AKR	M	45	49	51	483.3
16.	ShS	F	44	46	43	443.3	16.	ZaS	F	44	48	45	456.6
Mean			51.75	55.37	52.56	532.26	Mean		51.38	54.75	52.94	531.04	
SD			6.382	6.850	6.870	64.05	SD		6.417	5.247	3.924	45.85	

A set of t-tests for independent samples bears out that there is no significant difference between the experimental and control groups on any of the TOEFL components, $t(30) = .17$ ($p = .869$) for Listening comprehension, $t(30) = .29$ ($p = .774$) for Structure & writing, $t(30) = -.29$ ($p = .851$) for Reading comprehension, nor in the overall TOEFL score, $t(30) = .06$ ($p = .951$). The conclusion follows that the two groups of participants had the same level of proficiency in English at the beginning of the intervention. We may also observe, however, that students range widely with overall TOEFL scores between 531 and 633.

In the next stage, two interpreted texts were selected for analysis in the pretest. The same texts were used for all the 32 participants. These were the second and third fragments presented out of the series of four (see Section 3.2).

The selected pretest fragments were presented to three expert raters, who rated the participants' performance on the pretest and later also on the post-test. The results of the rating of the pretest are presented in Table 3. The table lists the overall judgment given by each rater separately as well as the mean of the three overall judgments. Component scores (for each of the 11 criteria) have been omitted from Table 3. We will present these later in the analysis. As is shown in Table 1, the overall ratings range between zero and 110, with different weights depending on the criterion at hand.

An independent-samples t-test was run on the difference between the experimental and control groups.¹ The means of the pretest scores do not differ significantly between the control group (56.6) and the experimental group (56.1), $t(30) = 0.083$ ($p = .943$, two-tailed).

At the end of the training program, a post-test of interpreting was run to assess the effect of the treatment. The results of the post-test ratings are presented in Table 4.

The same independent-samples t-test on the post-test scores (mean interpreting performance rating) for the experimental and control groups shows that the advantage of the experimental group (58.1) over the control group (56.4) is not significant, $t(30) = .271$ ($p = .788$, two-tailed).

Table 5 lists the mean judgments (averaged over the three raters) and the standard deviation of the ratings for each of the 11 criteria separately as well as the total evaluation, i.e. the sum of the 11 judgments. This information is presented for the ratings of the pretest and of the post-test side by side. The difference between post-test and pretest is specified in the columns headed "Gain". Here a positive gain value represents a positive effect of the treatment. Finally, the table specifies the magnitude of the difference in gain obtained by the experimental group and by the control group. A positive gain difference (Δ) indicates that the experimental group benefitted more from the training program than the control group.

The students' interpreting performance, whether in the pretest or in the post-test, is far from ideal. Given that the maximum value on the overall rating scale is at 110, the means of the tests are only a little above the midpoint of the scale. Moreover, it would appear from Table 5 that the post-test posed more of a challenge than the pretest, in spite of our attempts to keep the level of difficulty of the tests equal. It seems highly implausible that the control group would not benefit at all from the 22.5 h training program. Be this as may, the experimental group gained a significant 2.0 points due to the intervention, whereas the control group lost an insignificant .2 of a point. The difference in gain obtained by the experimental and control groups, i.e. 2.2 points in favor of the experimental group, is significant, $t(30) = 2.2$ ($p = .018$, one-tailed).

So far we have examined the effects of the intervention in terms of the overall interpreting performance. It may be worthwhile looking at effects on the 11 quality criteria separately.

Table 3. Overall quality rating of interpreting performance in the pretest (on a scale between 0 and 110). Ratings are listed for each judge separately as well as averaged over judges, for participants in the control (left-hand part) and experimental groups (right-hand part). Within each group, subjects are listed in descending order of the overall TOEFL score (see Table 2).

Nr.	Control Group						Experimental group					
	ID	Gender	Armand	Rasti	Maleki	Pretest score	ID	Gender	Armand	Rasti	Maleki	Pretest score
1.	AIB	M	82	97	88	89	SaR	M	94	87	92	91
2.	FaP	F	84	89	76	83	FaF	F	80	91	84	85
3.	VaH	M	75	79	77	77	AmS	M	75	80	73	76
4.	NeJ	F	68	69	76	71	MoS	F	75	70	71	72
5.	AmR	M	65	74	68	69	HoY	M	65	70	63	66
6.	AtR	F	60	68	64	64	FRN	F	60	64	65	63
7.	ReR	M	57	50	52	53	AmN	M	54	62	55	57
8.	MeR	F	50	55	48	51	SaS	F	45	55	47	49
9.	HaM	M	52	46	46	48	FaM	M	43	53	51	49
10.	AzD	F	46	51	47	48	AzS	F	43	51	47	47
11.	HoK	M	44	49	45	46	MaM	M	40	50	48	46
12.	MaL	F	42	47	46	45	NeN	F	44	50	44	46
13.	SIS	M	42	46	44	44	HaM	M	37	39	44	40
14.	ZoA	F	41	45	46	44	SiM	F	35	41	41	39
15.	SaG	M	33	42	36	37	AKR	M	33	40	35	36
16.	SHS	F	31	42	38	37	ZaS	F	31	39	38	36
Mean			54.5	59.31	56.06	56.62			55.25	55.75	56.31	56.12
SD			16.52	17.63	16.17	16.54			18.70	17.37	17.38	17.50



Table 4. Post-test results (for further information see Table 3).

Nr.	Control Group						Experimental group						
	ID	Gender	Armand	Rasti	Maleki	Post-test score	Nr.	ID	Gender	Armand	Rasti	Maleki	Post-test score
1.	AIB	M	88	96	89	91	1.	SaR	M	97	95	90	94
2.	FaP	F	88	86	78	84	2.	FaF	F	88	86	87	87
3.	VaH	M	76	71	75	74	3.	AmS	M	73	80	75	76
4.	NeJ	F	71	70	66	69	4.	MoS	F	68	70	75	71
5.	AmR	M	68	70	75	71	5.	HoY	M	70	69	80	73
6.	AtR	F	65	65	71	67	6.	FrN	F	61	70	64	65
7.	ReR	M	59	60	52	57	7.	AmN	M	59	64	54	59
8.	MeR	F	52	53	57	54	8.	SaS	F	43	50	48	47
9.	HaM	M	44	43	54	47	9.	FaM	M	49	58	52	53
10.	AzD	F	41	50	44	45	10.	AzS	F	53	51	43	49
11.	HoK	M	42	49	50	47	11.	MaM	M	48	52	56	52
12.	MaL	F	42	36	39	39	12.	NeN	F	47	40	42	43
13.	SIS	M	41	49	42	44	13.	HaM	M	41	45	49	45
14.	ZoA	F	44	48	43	45	14.	SiM	F	43	40	46	43
15.	SaG	M	33	37	32	34	15.	AKR	M	32	36	40	36
16.	ShS	F	30	41	34	35	16.	ZaS	F	33	40	38	37
Mean			53.37	58.88	56.13	56.43	Mean		56.56	59.13	58.69	58.12	
SD			19.23	16.90	16.84	17.53	SD		18.68	17.95	17.40	17.72	

Table 5. Statistics for 11 quality criteria judged for experimental and control groups in the pretest of interpreting performance. Means, standard deviations are presented. The three rightmost columns specify the significance (two-tailed) of the difference in gain obtained by the experimental and control groups.

	Control group				Experimental group				Gain difference			
	Pretest		Post-test		Pretest		Post-test		Gain	Δ	t(30)	p
	Mean	SD	Mean	SD	Mean	SD	Mean	SD				
1. Accuracy	9.8	3.8	11.1	3.3	10.3	2.9	12.1	3.2	1.8	0.5	1.8	.082
2. Omissions	8.5	2.6	9.8	2.8	9.3	3.3	8.2	3.0	-1.1	-2.3	-5.6	<.001
3. Coherence	5.4	1.8	5.2	1.7	4.8	1.6	4.8	1.6	0.0	0.2	0.6	.544
4. Grammar	4.5	1.4	4.4	1.3	4.4	1.2	3.9	1.2	-0.5	-0.4	-1.1	.279
5. Expression	4.3	1.2	3.9	1.0	4.3	1.0	3.8	1.1	-0.5	-0.1	-5	.649
6. Word choice	4.4	0.8	4.1	1.0	4.5	1.2	3.8	1.2	-0.7	-0.4	-1.5	.145
7. Terminology	4.1	1.2	4.1	0.9	4.0	1.2	3.8	1.0	-0.2	-0.2	-0.6	.540
8. Foreign accent	4.0	0.8	3.8	1.0	3.8	0.9	3.4	1.0	-0.4	-0.1	-0.2	.823
9. Pace	4.0	1.2	3.6	2.0	4.6	2.0	4.0	1.9	-0.6	-0.2	-0.5	.621
10. Voice	4.0	1.5	3.6	2.2	3.7	2.2	4.5	2.2	0.8	1.2	2.9	.007
11. Accentuation	3.6	1.7	3.0	1.6	2.6	1.5	5.8	1.4	3.2	3.8	23.1	<.001
Overall rating	56.6	16.5	56.4	17.5	56.1	17.5	58.1	17.7	2.0	2.2	0.2	.035

Table 5 shows that there are significant differences in gain between the experimental and control groups in only three of the 11 rating criteria. For reasons we fail to understand, the control group made a significantly greater improvement than the experimental group in reducing the number of (true) omissions. In terms of the other two criteria, it is the experimental group that benefits more by the intervention. The experimental group improves more in terms of voice and, especially, in correctness of accentuation. On the latter scale, an impressive difference in gain was obtained by the experimental group, in the amount of 3.8 points on a 10-point rating scale.

Figure 1 (left) plots the relationship between the TOEFL test and pretest scores of the individual participants, with separate symbols for participants in the experimental group (filled symbols) and in the control group (open symbols). Similarly, Figure 1(right) plots the relationship between the TOEFL test and post-test scores.

Figure 1 shows quite clearly that the overall TOEFL scores are distributed very much the same way for the experimental and control groups. It is also obvious that the overall TOEFL score makes an excellent prediction of the individual participant's interpreting quality, both in the pretest and in the post-test, with correlation coefficients higher than .9. In spite of this large effect of TOEFL score, there is a smaller but still significant effect of the intervention, i.e. the prosody awareness training raises the post-test score by 2 points, which gain is absent in the control group.

Figure 2 illustrates part of the results presented above in Table 5. It plots the gain from pretest to post-test for each quality judgment according to the mean ratings on each of the 11 evaluation criteria judged in the pretest and post-test separately for the control group (left part of figure) and for the experimental group (right part of figure). The possible ranges for the evaluation criteria differ as indicated in Table 1. For instance, accuracy ratings may range between 0 and 20 points, whereas scores for grammar and choice of words may range between 0 and 7 points. The overall rating may range between 0 and 110 points. Visual comparisons should therefore be made only on the basis of the difference in scores between experimental and control groups.

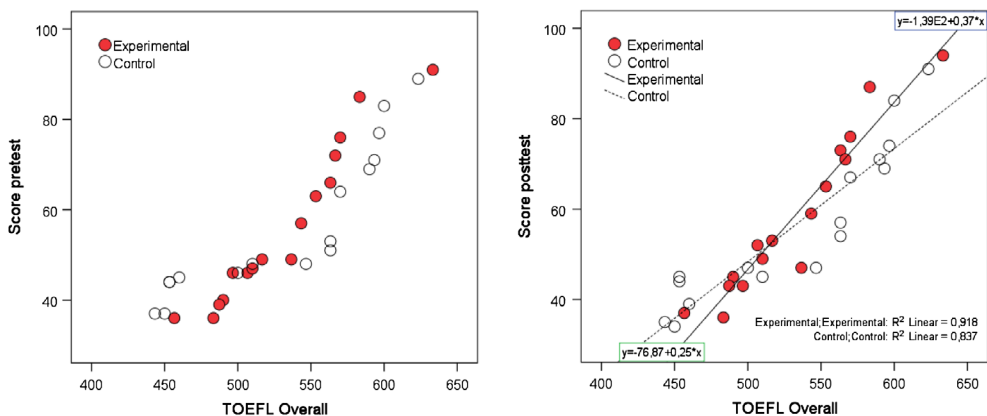


Figure 1. Pretest (left) and posttest (right) interpreting scores of individual students plotted as a function of their TOEFL scores, with separate markers for participants in the experimental group and in the control group.

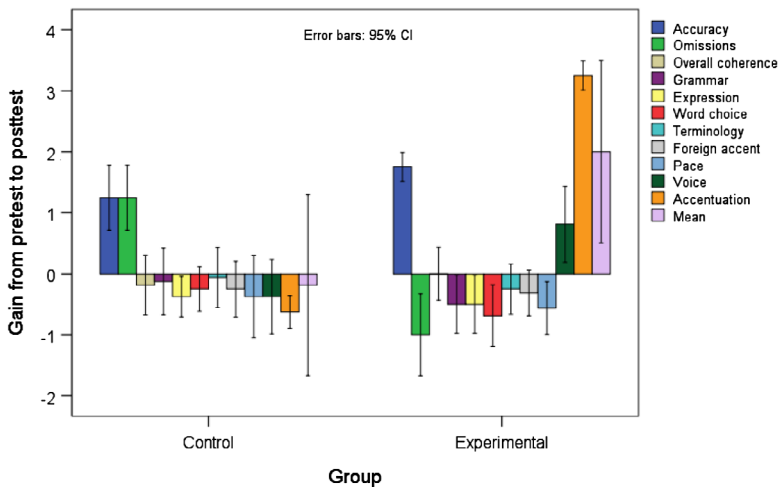


Figure 2. Scores obtained on each of 11 rating scales plotted separately for control (left) and experimental (right) group.

5. Conclusion

The present study investigated the effect of prosody awareness training on the quality of consecutive interpretation by Farsi-English interpreter trainees. Our results showed that explicit teaching of prosody did have a small but significant positive effect on the overall quality of interpretation for Farsi-English interpreter trainees. Moreover, the results show that the effect of the prosody awareness training was very strong as far as the interpreter's use of accentuation is concerned, i.e. on the scale that should be most sensitive to the intervention. We conclude that the training program influenced the student's actual interpreting performance.

Different studies have shown that instructors do not teach pronunciation explicitly because they lack the necessary skills or because they give higher priority to other aspects of the foreign language curriculum (e.g. Murphy 1997; Burgess and Spencer 2000; Macdonald 2003). This problem exists in interpreter training programs as well. These programs do not explicitly teach segmental pronunciation rules and prosody of the target language to interpreter trainees. This demands that policymakers reconsider the curriculum of interpreter training. The findings of this study are in line with those of Pourhosein Gilakjani (2012), who stated that careful preparation and integration of pronunciation teaching is a fundamental issue in developing the communicative skill of EFL learners and an important factor in the comprehensibility of EFL speakers. The results of the study also confirm Schmidt's hypothesis (Schmidt and Frota 1986) that EFL speakers with superior explicit knowledge of phonological structures and patterns of English are generally better intelligible speakers.

In this context, we should distinguish between segmental pronunciation and prosody (or suprasegmental pronunciation). In languages such as English and Farsi segmental information is typically sufficient to resolve any ambiguity as to which lexical item is intended by the speaker, while word prosody is generally not needed to recognize words: the number of minimal stress pairs, i.e. identical sequences of vowels and consonants that are distinct only in the stress pattern, hardly occur in these languages (e.g. Cutler 2005). However, word

prosody becomes more important as the segmental information is unreliable, as happens in speech spoken with a foreign accent. Moreover, if the segmental pronunciation is poor, errors in word prosody, such as incorrect word stress placement, may cause a complete breakdown of the word recognition process (van Heuven 1985, 2008). Sentence prosody (sentence stress, intonation) plays no direct role in the recognition of lexical items but helps the listener process the continuous stream of speech sounds. Prosodic breaks indicate which words should be parsed together to form meaningful chunks of information, while sentence stresses tell the listener which words contain important information. As such, sentence prosody is indispensable in communicating the speaker's intentions (Nooteboom 1997).

In the specific case of teaching English to Iranian interpreter trainees, we would advocate teaching the differences between the word stress systems of the two languages, and proving the students with lots of practice to learn the correct stress pattern of the English words. Also, teaching the communicative importance of sentence prosody and practicing the correct phrasing and accentuation of important words in sentences, using appropriate timing and speech melodies, should be given high priority.

The pedagogical implications of the present study would pertain to interpreting programs all over the world. The learners' first language should be taken into account when teaching prosody to interpreter trainees and this perspective demands that instructors be highly proficient enough in the target language to serve as a substitute native speaker. In the EFL teaching situation, learners tend to imitate their instructor's pronunciation. Moreover, suprasegmentals cannot be taught just through appropriate exercises in the textbooks; the instructor's production of suprasegmentals plays a major role in this regard. General proficiency in the target language is a necessary condition for perceiving and producing suprasegmentals. Therefore, before applying any methodology to increase awareness of suprasegmentals, there should be pedagogical procedures to improve the general proficiency of the interpreter trainees. In the EFL situation, learners traditionally consider phonology classes boring and they do not show any interest in them. Since phonetics is the foundation for speaking and listening comprehension (these are two very important skills for interpreters), this current tradition should change. Producers of teaching materials should be in contact with researchers in the field of phonetics, take publications of phonetics into consideration and include contrastive phonetics in the textbooks for interpreting programs.

Note

1. For all t-test reported in this paper, adjusted degrees of freedom were used to compensate for whatever differences exist in the sample variances. Nevertheless, we will report the nominal degrees of freedom in the text.

Disclosure statement

No potential conflict of interest was reported by the authors.

Notes on contributors



Mahmood Yenkimaleki is a guest scholar at Leiden University Centre for Linguistics and former head of translation and interpreting studies department at Tafresh University, Iran. His area of interest is interpreting studies and applied linguistics.



Vincent J. van Heuven (BA, MA, and PhD from Utrecht University) is Emeritus Professor of Experimental Linguistics and Phonetics and former director of the Leiden University Centre for Linguistics. He is now a professor at the University of Pannonia in Veszprém, Hungary. He served on the editorial boards (and as associate editor) of *Journal of Phonetics* (Academic Press/Elsevier) and *Phonetica* (Karger) and was editor of the series *Speech Research* (Mouton de Gruyter). Over 40 doctoral dissertations were written under his (co-) supervision. He is a life member of the Royal Netherlands Academy of Arts and Sciences.

References

- Ahrens, B. 2004. *Prosody beim Simultandolmetschen* [Prosody for Simultaneous Interpreting]. Frankfurt am Main: Peter Lang.
- Baker, A. A. 2011. "Discourse Prosody and Teachers' Stated Beliefs and Practices." *TESOL Journal* 2: 263–292.
- Birch, S. L., and S. M. Garnsey. 1995. "The Effect of Focus on Memory for Words in Sentences." *Journal of Memory and Language* 34: 232–267.
- Bock, J. K., and J. R. Mazzella. 1983. "Intonational Marking of Given and New Information: Some Consequences for Comprehension." *Memory & Cognition* 11: 64–76.
- Brewer, W. F. 1974. "There is No Evidence for Operant or Classical Conditioning in Human Subjects." In *Cognition and the Symbolic Processes*, edited by W. Weimer and D. Palermo, 1–42. Hillsdale, NJ: Erlbaum.
- Burgess, J., and S. Spencer. 2000. "Phonology and Pronunciation in Integrated Language Teaching and Teacher Education." *System* 28: 191–215.
- Burns, A. 2006. "Integrating Research and Professional Development on Pronunciation Teaching in a National Adult Program." *TESL Reporter* 39: 34–41.
- Champagne-Muzar, C., E. I. Schneiderman, and J. S. Bourdages. 1993. "Second Language Accent: The Role of the Pedagogical Environment." *International Review of Applied Linguistics* 31: 143–160.
- Chang, C. C. 2005. "Directionality in Chinese/English Simultaneous Interpreting: Impact on Performance and Strategy Use." PhD thesis, Graduate School of the University of Texas at Austin.
- Cutler, A. 1976. "Phoneme-monitoring Reaction Time as a Function of Preceding Intonation Contour." *Perception & Psychophysics* 20: 55–60.
- Cutler, A. 2005. "Lexical Stress." In *The Handbook of Speech Perception*, edited by D. B. Pisoni and R. E. Remez, 264–289. Malden, MA: Blackwell.
- Cutler, A. 2012. *Native Listening: Language Experience and the Recognition of Spoken Words*. Cambridge, MA: MIT Press.
- Dawson, M., and A. Schell. 1987. "Human Autonomic and Skeletal Classical Conditioning: The Role of Conscious Cognitive Factors." In *Cognitive Processes and Pavlovian Conditioning in Humans*, edited by G. Davey, 27–55. Chichester: Wiley.
- de Bot, K. 1983. "Visual Feedback of Intonation 1: Effectiveness and Induced Practice Behavior." *Language and Speech* 26: 331–350.
- de Bot, K., and K. Maifert. 1982. "The Teaching of Intonation: Fundamental Research and Classroom Applications." *TESOL Quarterly* 16: 71–77.

- Derwing, T. M., and M. J. Munro. 2005. "Second Language Accent and Pronunciation Teaching: A Research-based Approach." *TESOL Quarterly* 39: 379–397.
- Derwing, T. M., L. G. Diepenbroek, and J. A. Foote. 2012. "How Well Do General-skills ESL Textbooks Address Pronunciation?" *TESL Canada Journal* 30: 22–44.
- Derwing, T. M., M. J. Munro, and G. Wiebe. 1998. "Evidence in Favour of a Broad Framework for Pronunciation Instruction." *Language Learning* 48: 393–410.
- Field, J. C. 2003. "Promoting Perception: Lexical Segmentation in L2 Listening." *ELT Journal* 57: 325–334.
- Foote, J. A., A. K. Holtby, and T. M. Derwing. 2011. "Survey of the Teaching of Pronunciation in Adult ESL Programs in Canada, 2010." *TESL Canada Journal* 29: 1–22.
- Gerver, D. 1969. "The Effects of Source Language Presentation Rate on the Performance of Simultaneous Conference Interpreters". In *Proceedings of the Second Louisville Conference on Rate and/or Frequency-Controlled Speech*, edited by E. Foulke, 162–184. Louisville, KY: Center for Rate-Controlled Recordings, University of Louisville.
- Gut, U., J. Trouvain, and W. J. Barry. 2007. "Bridging Research on Phonetic Descriptions with Knowledge from Teaching Practice – The Case of Prosody in Non-Native Speech." In *Non-native Prosody: Phonetic Description and Teaching Practice*, edited by J. Trouvain and U. Gut, 3–21. Berlin: Mouton de Gruyter.
- Jackson, C. N., and M. G. O'Brien. 2011. "The Interaction between Prosody and Meaning in Second Language Speech Production." *Die Unterrichtspraxis* 44: 1–11.
- Jones, R. 2014. *Conference Interpreting Explained*. New York: Routledge.
- Koike, Y. 2014. "Explicit Pronunciation Instruction: Teaching Suprasegmentals to Japanese Learners of English". In *JALT 2013 Conference Proceedings*, edited by N. Sonda and A. Krause, 361–374. Transformation in Language Education, WINC, Nagoya, Japan.
- Leather, J. 1990. "Perceptual and Productive Learning of Chinese Lexical Tone by Dutch and English Speakers". In *New Sounds. Proceedings of the 1990 Amsterdam Symposium on the Acquisition of Second Language Speech*, edited by J. Leather and A. James, 72–97. Amsterdam: University of Amsterdam.
- Lederer, M. 1981. *La Traduction Simultanée: Expérience et Théorie* [Simultaneous Interpreting: Practice and Theory]. Paris: Minard.
- Lehiste, I. 1970. *Suprasegmentals*. Cambridge, MA: MIT Press.
- Lewis, M., and J. Anderson. 1985. "Discrimination of Operator Schemata in Problem Solving: Learning from Examples." *Cognitive Psychology* 17: 26–65.
- Li, X., P. Hagoort, and Y. Yang. 2008. "Event-related Potential Evidence on the Influence of Accentuation in Spoken Discourse Comprehension in Chinese." *Journal of Cognitive Neuroscience* 20: 906–915.
- Macdonald, S. 2003. "Pronunciation Views and Practices of Reluctant Teachers." *Prospect* 17. <http://www.nceltr.mq.edu.au/prospect/17/pros173.html>.
- Munro, M. J., and T. M. Derwing. 1995. "Foreign Accent, Comprehensibility, and Intelligibility in the Speech of Second Language Learners." *Language Learning* 45: 73–97.
- Murakawa, H. 1981. "Teaching English Pronunciation to Japanese Adults." Unpublished PhD diss., University of Texas at Austin.
- Murphy, J. 1997. "Phonology Courses Offered by MATESOL Programs in the US." *TESOL Quarterly* 31: 741–764.
- Neufeld, G. G. 1977. *Language Learning Ability in Adults: A Study on the Acquisition of Prosodic and Articulatory Features*. Working Papers in Bilingualism, 12, 45–60. Amsterdam: John Benjamins.
- Nooteboom, S. G. 1997. "The Prosody of Speech: Melody and Rhythm." In *The Handbook of Phonetic Sciences*, edited by W. J. Hardcastle and J. Laver, 640–673. Oxford: Basil Blackwell.
- Norris, J., and L. Ortega. 2000. "Effectiveness of L2 Instruction: A Research Synthesis and Quantitative Meta-analysis." *Language Learning* 50: 417–528.
- O'Neal, G. 2010. "The Effects of the Presence and Absence of Suprasegmental on the Intelligibility and Assessment of an Expanding-circle English according to Other Expanding-circle English Listeners". *JAIRO (Japanese Institutional Repositories Online)*5: 65–87.
- Pennington, M. C. 1998. "The Teachability of Phonology in Adulthood: A Re-examination." *International Review of Applied Linguistics* 36: 323–341.
- Pourhosein Gilakjani, A. 2012. "A Study of Factors Affecting EFL Learners' English Pronunciation Learning and the Strategies for Instruction." *International Journal of Humanities and Social Science* 2: 119–128.

- Robinson, P., A. Mackey, S. M. Gass, and R. Schmidt. 2012. "Attention and Awareness in Second Language Acquisition." In *The Routledge Handbook of Second Language Acquisition*, edited by S. Gass and A. Mackey, 247–267. London: Routledge.
- Rutherford, W., and M. Sharwood Smith. 1985. "Consciousness-raising and Universal Grammar." *Applied Linguistics* 6: 274–282.
- Sawyer, B. 2004. *Fundamental Aspects of Interpreter Education: Curriculum and Assessment*. Amsterdam: John Benjamins.
- Schmidt, R. 2001. "Attention." In *Cognition and Second Language Instruction*, edited by P. Robinson, 3–32. Cambridge: Cambridge University Press.
- Schmidt, R. 2010. "Attention, Awareness, and Individual Differences in Language Learning". In *Proceedings of CLaSIC 2010, Singapore, December 2–4*, edited by W. M. Chan, S. Chi, K. N. Cin, J. Istanto, M. Nagami, J. W. Sew, T. Suthiwan, and I. Walker, 721–737. Singapore: National University of Singapore, Centre for Language Studies.
- Schmidt, R., and S. Frota. 1986. "Developing Basic Conversational Ability in a Second Language: A Case Study of an Adult Learner of Portuguese." In *Talking to Learn: Conversation in Second Language Learning*, edited by R. Day, 237–326. Rowley, MA: Newbury House.
- Seleskovitch, D. 1978. *Interpreting for International Conferences: Problems of Language and Communication*. Washington, DC: Pen and Booth.
- Spada, N., and Y. Tomita. 2010. "Interactions between Type of Instruction and Type of Language Feature: A Meta-analysis." *Language Learning* 60: 1–46.
- Suwartono, S. 2014. "Enhancing the Pronunciation of English Suprasegmental Features through Reflective Learning Method." *TEFLIN Journal* 25: 80–93.
- Terken, J. M. B., and S. G. Nootboom. 1987. "Opposite Effects of Accentuation and Deaccentuation on Verification Latencies for "Given" and "New" Information." *Language and Cognitive Processes* 2: 145–163.
- van Donselaar, W., and J. Lentz. 1994. "The Function of Sentence Accents and Given/New Information in Speech Processing: Different Strategies for Normal-hearing and Hearing-impaired Listeners?" *Language and Speech* 37: 375–391.
- van Heuven, V. J. 1985. "Perception of Stress Pattern and Word Recognition: Recognition of Dutch Words with Incorrect Stress Position." *Journal of the Acoustical Society of America* 78: S21.
- van Heuven, V. J. 2008. "Making Sense of Strange Sounds: (Mutual) Intelligibility of Related Language Varieties. A Review." *International Journal of Humanities and Arts Computing* 2: 39–62.
- van Heuven, V. J., and A. M. C. Sluijter. 1996. "Notes on the Phonetics of Word Prosody". In *Stress Patterns of the World, Part 1: Background*, edited by R. Goedemans, H. van der Hulst, and E. Visch, 233–269. HIL Publications (volume 2), The Hague: Holland Institute of Generative Linguistics. Leiden: Holland Academic Graphics.
- Venkatagiri, H. S., and J. M. Levis. 2007. "Phonological Awareness and Speech Comprehensibility: An Exploratory Study." *Language Awareness* 16: 263–277.
- Yenkimaleki, M. **Forthcoming**. "Effect of Prosody Awareness Training on the Quality of Consecutive Interpreting between English and Farsi." PhD diss., Leiden University Centre for Linguistics.
- Yenkimaleki, M., and V. J. van Heuven. 2013. "Prosodic Feature Awareness Training in Interpreting: An Experimental Study". In *Proceedings of the 6th International Conference on Education, Research and Innovation, November 18–20, Seville*, edited by L. Gómez Chova, A. López Martínez, and I. Candel Torres, 4179–4188.
- Yenkimaleki, M., and V. J. van Heuven. 2016a. "The Effect of Prosody Teaching on Developing Word Recognition Skills for Interpreter Trainees: An Experimental Study." *Journal of Advances in Linguistics* 7: 1101–1107.
- Yenkimaleki, M., and V. J. van Heuven. 2016b. "Effect of Explicit Teaching of Prosodic Features on the Development of Listening Comprehension by Farsi-English Interpreter Trainees: An Experimental Study." *International Journal of English Language Teaching* 4: 32–41.
- Yenkimaleki, M., and V. J. van Heuven. 2016c. "Prosody Teaching Matters in Developing Speaking Skills for Farsi-English Interpreter Trainees: An Experimental Study." *International Journal of English Language and Linguistics Research* 4: 82–91.