



Universiteit  
Leiden

The Netherlands

**Analecta Praehistorica Leidensia 31 / Hunters of the Golden Age : the mid upper palaeolithic of Eurasia : 30,000-20,000 BP**

Roebroeks, Wil; Mussi, Marghareta; et al., ; Roebroeks, Wil; Mussi, Marghareta; Svodoba, Jiri; Fennema, Kelly

**Citation**

Roebroeks, W., Mussi, M., & Et al.,. (1999). Analecta Praehistorica Leidensia 31 / Hunters of the Golden Age : the mid upper palaeolithic of Eurasia : 30,000-20,000 BP, 410. Retrieved from <https://hdl.handle.net/1887/33765>

Version: Not Applicable (or Unknown)

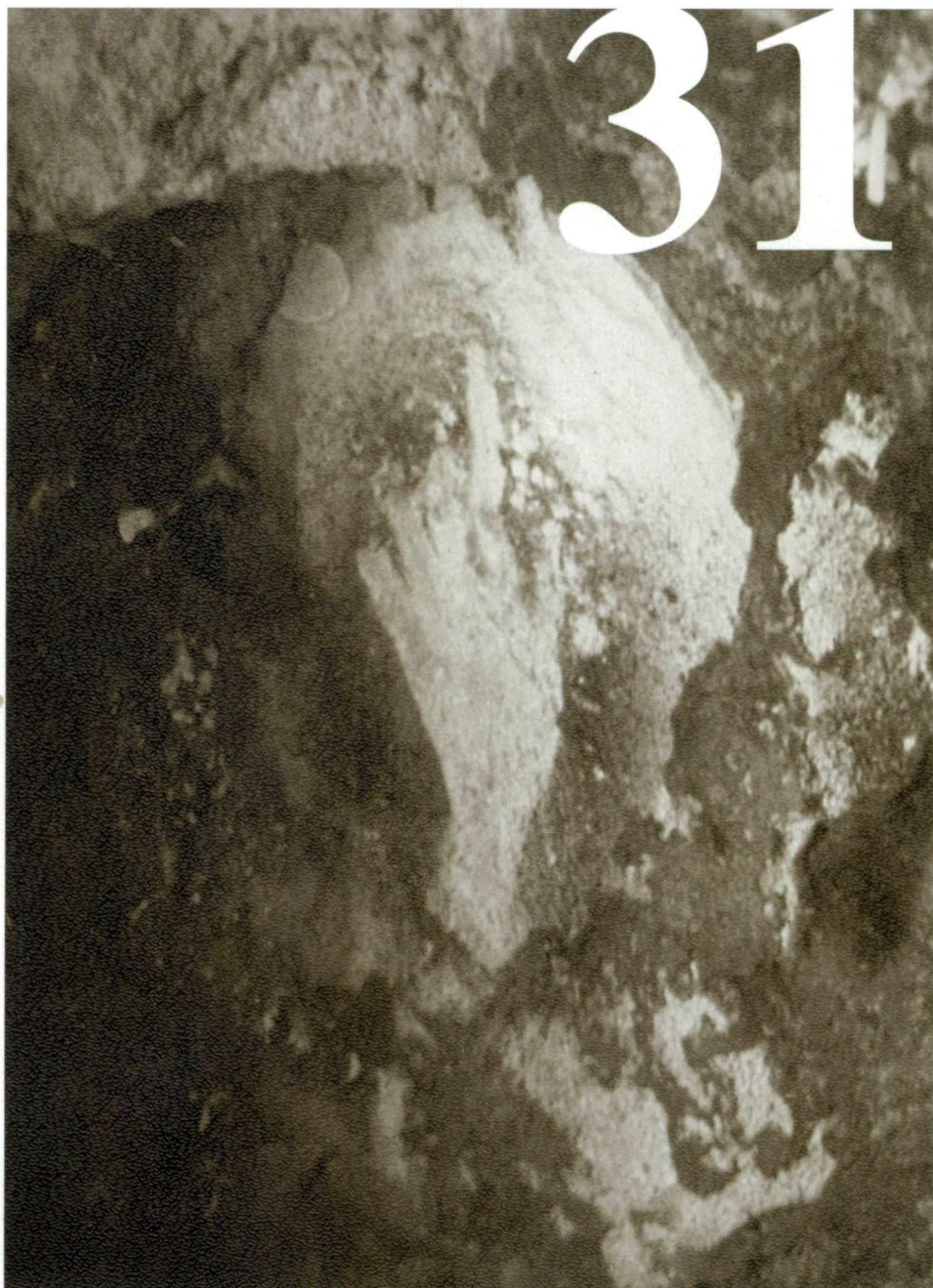
License: [Leiden University Non-exclusive license](#)

Downloaded from: <https://hdl.handle.net/1887/33765>

**Note:** To cite this publication please use the final published version (if applicable).

ANALECTA  
PRAEHISTORICA  
LEIDENSIA

31



1999



ANALECTA PRAEHISTORICA LEIDENSIA 31



ANALECTA  
PRAEHISTORICA  
LEIDENSIA

31

PUBLICATION OF THE FACULTY OF ARCHAEOLOGY  
UNIVERSITY OF LEIDEN

HUNTERS OF THE GOLDEN AGE

THE MID UPPER PALAEOLITHIC OF EURASIA 30,000 – 20,000 BP

EDITED BY WIL ROEBROEKS, MARGHERITA MUSSI,  
JIŘÍ SVODOBA AND KELLY FENNEMA



UNIVERSITY OF LEIDEN 1999

This volume is dedicated to the memory of Joachim Hahn

Published in cooperation with the European Science Foundation

Editorial supervision of this volume: W. Roebroeks

ISSN 0169-7447

ISBN 90-73368-16-2

Copyright 2000 Faculty of Archaeology, Leiden

Subscriptions to the series *Analecta Praehistorica Leidensia*  
and single volumes can be ordered exclusively at:

Faculty of Archaeology  
P.O. Box 9515  
2300 RA Leiden  
The Netherlands

## contents

- 1 Margherita Mussi, Wil Roebroeks and Jiří Svoboda: Hunters of the Golden Age: an introduction 1
- 2 Dale Guthrie and Thijs van Kolfschoten: Neither warm and moist, nor cold and arid: the ecology of the Mid Upper Palaeolithic 13
- 3 Paul Pettitt: Chronology of the Mid Upper Palaeolithic: the radiocarbon evidence 21
- 4 Steven Churchill, Vincenzo Formicola, Trenton Holliday, Brigitte Holt and Betsy Schumann: The Upper Palaeolithic population of Europe in an evolutionary perspective 31
- 5 Olga Soffer: Gravettian technologies in social contexts 59
- 6 Wil Roebroeks and Raymond Corbey: Periodisations and double standards in the study of the Palaeolithic 77
- 7 Jean Clottes: Art between 30,000 and 20,000 bp 87
- 8 Margherita Mussi, Jacques Cinq-Mars and Pierre Bolduc: Echoes from the mammoth steppe: the case of the Balzi Rossi 105
- 9 Ludmila Iakovleva: The gravettian art of Eastern Europe as exemplified in the figurative art of Kostenki 1 125
- 10 Yvette Taborin: Gravettian body ornaments in Western and Central Europe 135
- 11 Martin Oliva: The Brno II Upper Palaeolithic burial 143
- 12 Lars Larsson: Plenty of mammoths but no humans? Scandinavia during the Middle Weichselian 155
- 13 Pavel Pavlov and Svein Indrelid: Human occupation in Northeastern Europe during the period 35,000 - 18,000 bp 165
- 14 Sergey Vasil'ev: The Siberian mosaic: Upper Palaeolithic adaptations and change before the Last Glacial Maximum 173
- 15 Jiří Svoboda, Bohuslav Klíma, Lenka Jarošová and Petr Škrdla: The Gravettian in Moravia: climate, behaviour and technological complexity 197
- 16 Martin Oliva: Some thoughts on pavlovian adaptations and their alternatives 219



- 17 Viola Dobosi: Interior parts of the Carpathian Basin between 30,000 and 20,000 bp 231
  - 18 Anta Montet-White: A scarcity of MUP sites in the Sava Valley, stratigraphic hiatus and/or depopulation 241
  - 19 Joachim Hahn: The Gravettian in Southwest Germany - environment and economy 249
  - 20 Anne Scheer: The Gravettian in Southwest Germany: stylistic features, raw material resources and settlement patterns 257
  - 21 Gerhard Bosinski: The period 30,000 - 20,000 bp in the Rhineland 271
  - 22 Martin Street and Thomas Terberger: The German Upper Palaeolithic 35,000 - 15,000 bp. New dates and insights with emphasis on the Rhineland 281
  - 23 Wil Roebroeks: A marginal matter: the human occupation of northwestern Europe - 30,000 to 20,000 bp 299
  - 24 François Djindjian: The Mid Upper Palaeolithic (30,000 to 20,000 bp) in France 313
  - 25 Jean-Philippe Rigaud: Human adaptation to the climatic deterioration of the last Pleniglacial in southwestern France (30,000 - 20,000 bp) 325
  - 26 João Zilhão: Nature and culture in Portugal from 30,000 to 20,000 bp 337
  - 27 Margherita Mussi: Heading south: the gravettian colonisation of Italy 355
  - 28 Catherine Perlès: Greece, 30,000 - 20,000 bp 375
- General index 399
- Site index 405

# general index

- Abies* 376  
*Abies alba* 358  
acculturation 342  
*Acer* 376  
adaptation 31, 36, 41, 48, 50, 226, 227, 254, 325-328  
aggregation 59, 60, 67, 68, 221  
*Alces alces* 181  
*Alces latifrons* 16  
alder 174, 175, 177, 182  
alder (*Alnus* sp.) 63  
*Alkanna* sp. 377, 383  
*Alnus* 233  
*Alopex lagopus* 13, 180-182, 253, 277  
*Ampullina* 137  
analogue 14, 15, 17  
*Anchusa* sp. 377, 383  
antelope 14, 67  
antler tools 260, 261  
archaeological record  
– debate on formation 307, 308, 316, 343, 355, 356, 384-386  
– visibility 307  
archaic humans 32  
arctic fox 14, 15, 61, 157, 177, 180-182, 185, 189, 272, 327  
arctic lemming 15  
arctic seal 338  
*Arcularia gibbosula* L. 137, 139  
aridity 13-17, 176, 233, 299, 320  
art (*see* cave art)  
– development of 87  
– general 5, 50, 81, 87-100, 125-132, 190, 210, 219, 347, 361  
– mobiliary 61, 81, 88, 125-132, 184, 190, 197, 205, 225, 261-263, 266, 304, 305, 347  
– open air 343, 347  
– preservation 88  
– themes 87, 130-132, 150  
*Artemisia* 177, 178, 233, 252, 358, 375, 376, 380, 382, 388  
*Asclepias* sp. 63  
Asiatic wild ass 177, 179-182  
asteraceae 252  
aurochs 99, 181, 338, 341, 343, 358, 360, 362  
*Australopithecus* 80  
base camp 274, 277, 306-308, 344, 388  
basketry 59, 61-64, 66-68, 206, 211  
*Bayania lactea* 137  
beads 135-139, 185, 265, 266, 347  
bear 87, 92, 97-100, 125-132, 138, 203, 250, 275, 284, 300, 358  
– brown bear 167, 177, 179-181, 183, 300, 358  
beaver 138  
beech 199  
behaviour  
– repetitive 78, 79, 210  
– seasonal 265  
*Betula* 155, 358, 376  
biomass 41  
– animal 17  
– density 17  
birch 155, 174-177, 179, 182, 188, 251, 252  
bird 66, 99, 100, 125-132, 137, 157, 158, 182-186, 202, 203, 219, 253, 341, 377, 383  
bison 13, 17, 89, 92, 93, 99, 100, 111, 167, 169, 177, 179-183, 186, 188, 233, 241, 245, 265, 321, 326, 327, 341, 358  
– ‘short-corned’ bison 177  
*Bison* 23  
*Bison priscus* 156, 180-183  
*Bittium* spp. 377, 383  
boats 43, 159  
body ornaments 135-139, 186, 190, 225  
body shape 31, 36-39  
boiling stone 60  
Boraginaceae (*Buglossoides arvensis* [*Lithospermum arvense*]) 377, 383  
boreal forest 15  
*Bos* 233, 383, 390  
*Bos* sp. 181  
*Bos/Bison* 253, 272, 275, 277, 377  
*Bos primigenius* 341  
bovid 98, 99, 138, 144, 203, 260, 262, 265, 275, 300, 307, 314, 327, 358, 364  
*Buccinum corniculum* 136  
burials 1, 2, 4-6, 61, 78, 79, 81-83, 143-150, 183, 185, 190, 206-208, 219, 226, 265, 301, 304, 320, 361-363  
calibration 290  
camp (*see* site)  
*Canis* 233  
*Canis lupus* 180, 181, 253, 338  
*Capra* 180, 233, 338  
*Capra ibex* 253, 265, 277  
*Capra pyrenaica* 338, 339, 341  
*Capreolus* 377, 383  
*Capreolus capreolus* 180-182, 337  
caprid 98, 100  
carnivore 13, 100, 125, 126, 130-132, 219, 220, 233, 242, 253, 338, 343, 344, 358  
*Carpinus betulus* 358, 376  
Caryophyllaceae 252  
*Castor fiber* 337  
*Catinella arenaria* 232  
cave art (*see* art) 2, 5, 6, 81, 87-100, 108, 320, 342, 347, 361, 364  
– animal 96-100, 158, 361, 364  
– dating 88-92  
– development 92-96  
– engraving 42  
– hand signs 320, 361  
– painting 4  
– patterning 88  
– styles 89, 92, 96

- sub regions 5
- themes 96-100
- cave bear 179, 242, 250, 253, 262, 263, 265, 358
- cave hyena 180
- cave lion 181, 343
- cave sediments 313, 314, 325, 326
  - accumulation 232, 242, 249, 250, 252
  - deposits 243, 252
  - preservation of archaeological material 23, 232, 244
- cave sites 4, 23, 249, 257, 328, 338-340
  - discontinuous settlement 232
- Cepaea nemoralis* 337
- ceramics 2, 6, 59, 60, 63, 205, 206, 211
- cervids 97-100, 302, 383
- Cervus* 275, 277, 338, 377, 380, 383, 386
- Cervus* sp. 183
- Cervus elaphus* 180-182, 275, 303, 341, 377
- Cervus megaceros* 314, 321
- chaîne opératoire 328
- chamois 321, 339, 341, 343, 358
- cheetah 15
- Chenopodiaceae 233, 358, 376, 382
- chronology 4, 21-27, 156, 157, 159, 198-202, 231, 232, 281-291, 301-303, 325, 326, 341-343, 364, 365, 375-380
- cichoridaeae 252
- climate 13-17, 36-39, 249, 266, 327, 358, 359
- climatic adaptation 39-41, 48, 50, 327, 328, 331
- climatic modelling 13, 358
- coal 60, 211
- coastal settlement 157-159
- Coelodonta antiquitatis* 23, 180-183, 253, 277
- Coleoptera 299
- collard lemming 13, 14, 253, 314
- colonisation 165-170
- Columbella rustica* L. 136, 137
- Columella columella* 233
- contemporaneity, of sites 265, 326, 342
- corsac (*Vulpes corsac*) 180
- Corylus* 233, 358
- cowrie 139
- cranial morphology 31-36
- Cricetini 383
- Cro-Magnon 31, 39, 80, 82, 320
- Crocota* 233
- Crocota spelaea* 180, 253
- cruciferae 251
- cultural
  - frontier 319
  - geography 78, 79
  - homogeneity 41, 50
  - tradition 135-139, 166-169, 189, 190, 236, 237, 261
- Cyclope* 276
- Cyclope neritea* L. 136, 137, 139
- Cyperaceae 155, 252
- Cypraea* sp. 136, 137, 139
- Dama* 377, 380, 383
- deer 67, 183, 188, 261, 263, 272, 274, 275, 277, 346, 361, 364, 386, 388
  - deglaciation 3, 156
  - demography 21, 25-27, 32, 245, 265, 317-321, 346, 365, 366, 388, 389
  - density figures 3, 25, 26
  - dentalium 137, 138, 209, 391
  - Dentalium* sp. 137, 138, 143, 144
  - Dentalium badense* Partsch 144, 150, 226
  - depopulation 241, 244, 245, 317, 318
  - Dicrostonyx* 13
  - Dicrostonyx torquatus* 15, 314
  - diet 41, 50, 66, 203
  - durables 60, 61
  - dwarf birch 174, 177, 252
  - dwellings (*see* habitation structures, houses, huts, tents) 64, 79, 80, 82, 126, 177, 182, 183, 186, 189, 197, 208, 210, 211, 222, 307, 316, 360
  - early modern Europeans 31
  - ecology 13-17, 156
  - Elephas antiquus* 338
  - elk 81, 233, 358, 364
  - encounter strategy 249
  - environment 6, 13-17, 26, 27, 31, 168, 173-177, 198, 199, 226, 232, 233, 235, 241, 249, 250, 299, 300, 338-341, 347, 355-359, 375-380
    - and human evolution 31
    - reconstruction 249-253, 313-315, 325-328, 375
  - Ephedra* 358
  - equids 358
  - Equus* 233, 275, 277, 338, 377, 383, 386
  - Equus* sp. 182, 253, 285
  - Equus caballus* 180-183, 341, 358
  - Equus germanicus* 233
  - Equus hemionus* 180-182
  - Equus hydruntinus* 314, 321, 326, 358, 360, 362
  - Equus* cf. *hydruntinus* 377, 383, 388
  - Equus* cf. *przewalskii* 23
  - Erica* 338
  - erosion 241-244, 251, 267, 301, 307, 314, 384, 385
  - ethnoarchaeology 207
  - ethnographic record 59, 63, 65-69, 245, 344, 348
  - evolution of modern humans 31-50
  - extinction 13, 26
  - Fagus* 358, 376
  - fallow deer (*Dama dama*) 341
  - fauna 13-17
  - faunal
    - date 156, 157
    - exploitation studies 343
  - faunal assemblage
    - composition 14, 156, 157, 169, 177, 219, 233, 252, 253, 300, 314, 326, 341, 343, 358, 386
    - preservation 156, 275
  - felines 87, 92, 98-100, 125-131, 203, 314
  - Felis* 233
  - female labour 59-69
  - figurines 5, 6, 60-64, 69, 88, 92, 96, 105-121, 125-132, 143-146, 148, 149, 184-186, 190, 225, 226, 261, 272, 273, 304, 320, 361, 363, 364, 367

- animal 69, 125-132, 185, 225, 226
- baked clay 5, 60, 69, 205, 206, 210
- distribution 3
- ivory 61, 88, 92, 113-118, 126, 127, 131, 132, 145, 148, 149, 186, 304, 363
- spatial distribution 127-130, 132
- Venus 5, 108
- fir 174, 175, 179, 182
- fishing 254
- food
  - marine 43, 44, 155, 158, 159, 307
  - plant 59, 63, 67, 203, 254, 275, 277
  - resources 2, 5, 59, 66, 68, 267
  - supply 2
- food management 65, 169, 320, 321
- forb 175, 177
- forest 13, 15, 16, 62, 174-177, 179, 188, 233, 339, 358
- fox 66, 135, 138, 202, 203, 210, 211, 233, 253, 364
- gastropod 261
- gene flow 2-4, 31, 41, 50
- genetic drift 32
- geomorphology 231, 234, 237, 306, 337, 358
- GISP2 290
- glaciation 3, 13-17, 155-159, 175, 176, 241, 339, 356, 357
- goose 183
- Gramineae 155, 178, 233, 252, 254, 358, 376
- Granaria frumentum* 232
- grass 174, 175, 177, 251, 252
- great auk 158, 338
- grinding 60, 61, 65, 203-206, 211, 275-277
- group size 65, 66
- gull 183
- Gulo gulo* 181
- habitation structures (*see* dwellings, houses, huts, tents) 1, 2, 4, 5, 60, 125-132, 183, 185, 273, 274
- hare 66, 167, 202, 203, 233, 253, 263, 265, 341, 377, 383
- Haush 348
- hearth 60, 63, 79, 125-127, 177, 179, 180, 183, 185, 186, 188, 189, 197, 204, 206, 207, 209-211, 273-275, 306, 360
- 'Heinrich events' 359
- Helicella* sp. 383
- Helix* sp. 383
- hematite 60, 88, 205
- herbivore 2, 3, 17, 67, 125, 127, 130, 131, 155, 233, 241, 338, 343, 347, 360
- herbs 175, 252, 376, 382
- herd behaviour 17
- hiatus 241-245, 265, 267, 314, 365, 385
- high latitudes, colonisation 165-170, 189, 317
- Hinia* 276
- Hinia incrassata* 136
- Hinia reticulata* L. 137
- Homalopoma sanguineus* 136, 137, 276
- home base 222
- Homo erectus* 80, 87
- Homo sapiens* 81
- Homo sapiens sapiens* 78, 87, 190, 327
- horse 13-15, 17, 67, 89, 92, 93, 98-100, 126-129, 131, 138, 144, 165-167, 169, 177, 179, 183, 186, 188, 202, 203, 219, 233, 236, 237, 241, 253, 265, 271, 272, 275, 277, 300, 302, 307, 313, 314, 316, 320, 321, 326, 327, 338, 341, 343, 358, 360-362, 364
- horse/ass (*Equus* sp.) 182
- houses (*see* dwellings, habitation structures, huts, tents) 60
- human diet 41, 50
- human remains 3, 31-50, 143, 144, 149, 185, 190, 206, 241, 265, 320, 344, 361
- hunter-gatherers 1, 32, 42, 43, 45, 59, 66, 68, 69, 82, 197, 200, 211, 304, 315, 318, 320, 321, 344, 346, 386, 388
  - analogy with past 42, 207
  - local group 344
  - patterns of exploitation 344
- hunting 2, 5, 17, 64-66, 78, 98, 189, 202, 203, 211, 253, 254, 265, 275, 316, 318, 360, 380
  - and gathering 64, 159, 202, 203
  - behaviour 17, 31, 32, 189
  - camp 235, 237, 241, 274, 387
  - communal 66, 67, 219
  - of mammoth 2, 5, 149, 202, 211, 219, 226, 253, 265, 275, 316, 320, 321, 348
  - technology 31, 32, 61, 64
  - territory 244, 245
- huts (*see* dwellings, habitation structures, houses, tents) 79
- hyena 15, 300, 338, 343, 358, 360, 365
- ibex 15, 98, 99, 138, 178, 180, 252, 253, 262, 263, 275, 314, 321, 339, 341, 343, 358, 360, 362, 386, 388
- Ibex* 377, 383
- ice
  - caps 155-159, 356
  - cores 16, 290, 291, 313, 314, 326
  - sheets 16, 175, 176
- inbreeding 31, 41, 50
- industry and industrial groupings 189, 190, 315, 316
- innovation 64, 65, 135, 136, 236, 237, 315, 328, 331
- Juniperus* 358, 376, 377
- kangaroo 67
- kiln 197
- Lagopus* 233
- Lagurus lagurus* 15
- larch 175, 176, 179
- larix 174, 175, 177
- lemming 165, 167, 169, 253
- lemming, steppe 15
- lemming, true 13, 314
- Lemmus lemmus* 13, 314
- leopard 15, 358
- Lepus* sp. 253
- Lepus capensis* 341
- liguliflorae 251
- lion 13, 14, 17, 93, 97-99, 112, 131, 132, 138, 203, 233, 358
- Lithospermum arvense* 383
- Littorina littorea* L. 137
- Littorina obtusata* L. 137
- Littorina saxatilis* Olivi 137
- lizard 377, 383

- loess 13, 16, 143, 199, 232, 257, 271  
 – accumulation 299, 307  
 – deposits 301  
 – localities 199  
 – profiles 199, 271  
 – sequences 16
- logistical strategy 344, 345
- Lupus* 277
- lycopods 177
- Lynx* 233
- mammoth 2, 5, 60, 79, 92, 97-100, 114-117, 125-132, 143-145, 147, 149, 155-157, 165-169, 173, 177, 179-186, 188, 189, 197, 198, 202, 203, 209, 211, 219-222, 225, 226, 233, 241, 252, 253, 263, 265, 272, 275, 277, 300, 302, 303, 305, 313, 314, 316, 321, 326, 327, 338, 341, 358
- mammoth steppe 2, 5, 6, 13-17, 105, 121, 157, 300
- Mammuthus* 285
- Mammuthus primigenius* 180-183, 253, 277, 285
- marine  
 – cores 16  
 – fauna 157  
 – food 43, 44, 155, 158, 159, 307  
 – regression 347  
 – shells 347, 361
- marmot 271
- Marmota* 277
- masks 113
- mating network 50
- megaceros 99, 314, 320, 321, 327
- Megaceros* 320
- Megaloceros giganteus* 156
- Melanopsis* 138
- microtines 253
- Microtini 383
- Microtus* 377
- Microtus arvalis/agrestis* 253
- Microtus oeconomus* 253
- Microtus oeconomus/malei* 314
- Milankovich cycles 13-15
- milkweed 63, 68
- Mitraria salomensis* Mayer 137
- mobile  
 – adaptation 211  
 – resources 17, 202
- mobility 32, 39, 50, 202, 211, 245, 263, 264, 275, 317
- modern humans 1, 4-6, 25, 31, 32, 35, 36, 39, 42, 78-80, 82, 83, 206, 241, 265, 337, 342, 343, 348  
 – arrival of 31, 32  
 – biology of 31-50  
 – physical appearance 31, 32
- Mongolian gazelle 188
- Murinae 383
- Mus* 377
- musk ox 14, 15, 156, 167, 169, 341
- Nassarius reticulatus* (Linnaeus) 308
- Natica* 137
- Neanderthal 4, 6, 26, 31, 32, 39, 78-83, 87, 88, 241, 301, 328, 337, 341-343, 348, 380, 384, 389
- necklace 185
- needles 61, 185, 261
- Nerita littoralis* 304
- netting 59, 61-66, 202, 206
- nettle (*Urtica* sp.) 63, 68
- networks 2, 5, 32, 41, 50, 116, 118, 136, 139, 219, 249, 264, 266, 346, 348, 349, 366, 367
- niche geography 78
- Nucella lapillus* L. 137
- Nunamiut 344
- nutrients 15
- nutrition 41
- oak 199, 337, 358, 382
- Olea* 340
- open systems 32, 41, 50, 219, 366, 367
- ornaments 135-139
- outbreeding 41, 42
- Ovibos moschatus* 156
- Ovis* 180, 181
- Ovis ammon* 180, 181
- Ovis nivicola* 180, 181
- owl 99
- palaeo-morphing 110-112
- Panthera spelaea* 181
- Patella* sp. 337, 338
- pendants 109, 110, 114, 135-139, 185, 206, 261-263, 266, 361, 364
- periglacial 15, 16, 175, 176, 299, 307
- periodisations 77-83, 281
- perishables 59, 61-64
- permafrost 15, 115, 155, 174, 271, 299
- Picea* 233, 273, 358
- pigments 60, 61, 88
- pine 175-177, 179, 233, 252, 337, 338, 340-342, 382
- Pinguinus impennis* 338
- Pinus* 155, 233, 358, 375, 376
- Pinus pinaster/pinea* 341
- Pinus sylvestris* 338, 340, 341
- pleniglacial occupation 286-291, 308
- Poaceae 252
- Poephagus baikalensis* 180
- polar bear 159
- polar desert 15
- polar fox 13, 167, 169, 203, 277, 300
- pollen analysis 251, 252
- Polygonum* 233
- population  
 – density 41, 50, 159, 265  
 – distribution 21, 22, 316  
 – in the landscape 316
- post-depositional factors 307, 308, 316, 343
- procurement  
 – direct 220  
 – embedded 220
- projectile points 328, 344, 364

- ptarmigan 253  
*Pupilla triplicata* 233  
Pupillidae 383  
*Pusa hispida* 338  
*Quercus* 233, 376  
*Quercus* cf. *cerris* 375  
rabbit (*Oryctolagus cuniculus*) 341  
radiocarbon dating 2, 21-27, 89-92, 200-202, 250, 251, 281-291, 317-320  
*Rangifer* 15, 277  
*Rangifer tarandus* 15, 156, 180, 181, 253  
raw material 60, 61, 220-225, 235, 236, 265, 274, 304, 306, 343, 345-347  
– distribution 203, 221, 259  
– extraction 136, 137, 231, 235-237, 254, 319, 320, 345  
– imports 60, 203, 219, 220-225, 237  
– local 189, 235, 236, 254, 263, 264  
– movement 1, 3, 5, 135, 188, 203, 235, 245, 259, 263-266, 275, 276, 304, 308, 319, 344, 345, 363  
red deer 136-139, 177, 179-182, 186, 203, 233, 252, 253, 275, 314, 321, 326, 327, 337, 338, 341, 343, 358, 360, 362, 364  
red fox 177, 180-182, 189, 252  
‘Red Lady’ of Paviland 4, 79, 301, 302, 304, 306, 308  
refitting 4, 210, 253, 264, 265, 274  
refuge 318  
reindeer 13-15, 17, 89, 138, 144, 145, 150, 157, 165-167, 169, 173, 177, 178, 180-183, 185, 186, 189, 202, 203, 209, 219, 226, 233, 241, 253, 261, 265, 271-275, 277, 284, 285, 300, 304, 307, 308, 313, 314, 316, 321, 326, 327, 341, 358, 364  
residential mobility 50, 59, 68  
resolution, chronological 5, 21, 22, 26, 27, 314, 327  
resource  
– animal 17, 265  
– aquatic 343  
– availability 17  
– marine 43, 44, 155, 158, 159  
– mobile 17  
– spatial exploitation 386, 387  
– stress 31, 44, 50, 220, 244  
rhinoceros 14, 15, 87, 90, 92-94, 97-100, 126, 130, 143, 144, 183, 186, 188, 203, 226, 233, 253, 275, 277, 314, 321  
ritual 5, 59, 68, 69, 143, 206, 226, 355, 361, 367  
rock shelters 328  
rodents 168, 219, 233, 314, 341, 377  
roe deer 180-182, 314, 321, 327, 358  
*Rupicapra* 233  
*Rupicapra rupicapra* 253, 338, 341  
saiga 13, 15-17, 177, 180, 327  
saiga antelope 17, 188, 327, 358  
*Saiga* 15, 180  
*Saiga tatarica* 16, 180, 183  
*Salix* 155  
salmon 99  
salmonid  
– *Hucho hucho* 253  
– *Lota lota* 253  
– *Thymallus thymallus* 253  
scavenging 169  
sea 340  
– level 14, 136, 157, 242, 299, 307, 308, 340, 341, 355, 356, 386  
seal 157, 158  
– bearded seal 159  
– harp seal 159  
– ringed seal 159  
sedentism 197, 206, 234, 237, 273  
Selk’nam 344, 346, 348  
*Semicassis saburon* Bru. 137  
sexual division of labour 2, 31, 43-45, 59, 67  
shamanism 120, 149, 150, 226  
sheep 15, 180, 181  
– mountain sheep 67  
– snow sheep 177  
shellfish 159  
shells 3, 5, 60, 61, 135-139, 143-145, 150, 158, 210, 226, 261, 263, 274, 276, 277, 304, 308, 319, 320, 347, 361  
– marine 347, 361  
– procurement 135-139, 264, 274, 320  
Siberian pine 175, 182  
silver fir 175  
site  
– arcpatterns 79  
– camp 206-208, 245  
– contemporaneity 265, 306, 327, 344  
– decrease in numbers 267, 384, 389  
– extraction 263  
– increase in numbers 2-4, 25, 41, 267  
– location 273, 274, 277, 304, 306, 317, 343, 386  
– open 23, 79, 125, 266  
– seasonal aggregation 59  
– shelters 6, 60, 316  
– survival 155-159, 316, 384  
– type 4, 169, 181, 198, 206-208, 220, 222, 245, 273, 274, 343, 359, 360  
– unit of analysis 206-208, 210, 211  
– workshop 186, 234-236, 343, 360  
skeletal material 31-50  
snails (land) 337, 338  
social  
– complexity 32, 50, 211, 226  
– geography 50  
solifluction 257, 267, 325  
*Sorbus* 233  
*Spalax* 377  
spatial  
– behaviour 78  
– lithic material 220-225  
spear 45, 66, 344  
species  
– diversity 13, 14, 16  
– richness 16  
*Sphaeronassa mutabilis* L. 137

- spotted hyena 13, 17  
 spruce 251, 252  
 stag-moose 16  
 stone artefacts  
   – function 60  
   – morphology 60  
 storage 67, 126, 127, 210  
 strategy encounter 17  
 sub-Saharan African 31, 37-39  
 subsistence 32, 41, 169, 202, 203, 226, 227, 275, 328, 343, 344, 386  
 suid 275  
*Sus* 275, 277, 377, 383  
*Sus scrofa* 337, 341  
 swan 185  
 taiga 15, 174-177  
 taphonomy 253  
 technology 31, 59-69, 80, 139, 203-206, 315, 316, 328  
   – change 43, 44, 50, 64, 315, 316, 327, 344-346, 348  
   – efficient 43, 80  
   – social context of 59-69  
 tectonism 14  
 temporal scale 327, 342  
 tents (*see* dwellings, habitation structures, houses, huts) 274  
 territory 318, 346, 347, 386  
   – foraging groups 244  
   – size 275, 276, 346, 347  
 textiles 2, 59, 61-64, 66, 68, 197, 205, 206, 211  
*Tilia* 358  
 tortoise 377, 383  
*Trivia coccinelloides* (Sowerby) 308  
*Trivia europea* Mtg. 136, 137, 139  
 tundra 15, 168, 174-177, 252, 300  
*Turritella terebralis* Lmk. 137  
*Tympanotonus margaritaceus* 274  
*Tympanotonos margaritaceus* Brocchi 137  
 typology 281, 315, 316, 325, 327-332  
*Ulmus* 233, 358, 376  
 umbelliferae 251  
 ungulates 189, 358, 360, 377, 386  
*Ursus* 277  
*Ursus arctos* 180, 181, 183  
*Ursus spelaeus* 253  
*Urtica* 206, 211  
 usewear 204  
*Vallonia tenuilabris* 233  
 Venus figurines 5, 108  
 volcanism 357, 358  
*Vulpes corsac* 180  
*Vulpes vulpes* 253  
 walrus (*Odobenus rosmarus*) 156, 157  
 weapons 60, 226, 328, 344  
 whale 157  
   – blue whale 159  
   – bowhead whale 159  
   – white whale 159  
 wild ass 179  
 wild boar 99, 233, 275, 314, 321, 326, 327, 341  
 wild cereals 275  
 wild sheep/argali 177-182  
 willow 251, 252  
   – dwarf willow 252  
   – sedges 174  
 wolf 13, 17, 126, 138, 167, 177, 180, 181, 189, 202, 203, 210, 274, 300, 358  
 wolverine 181, 182, 185, 189, 203  
 wood artefacts 61, 62, 197  
 woolly mammoth 13, 17, 285  
 woolly rhinoceros 13, 17, 144, 169, 177, 180-183, 186, 188, 189, 219, 233, 300, 327, 341, 358  
 wormwoods 175, 177  
 yak 180  
   – Baikal yak 178  
 yew (*Taxus* sp.) 63, 199  
*Zelkova* 358

## site index

- Abri Blanchard 88, 92, 139  
Abri im Dorf 249, 257, 259, 261, 264  
Abri du Facteur 24, 92, 313, 314, 318, 320, 329  
Abri Fritsch 289  
Abri Pataud 22-25, 40, 43, 92, 258, 261, 313, 314, 316, 318-320, 326, 328-331  
Abri du Raysse 319  
Achaia 385  
Achenheim 271-273, 277  
Achinskaia 176, 177, 180, 184, 189, 190  
Açude do Alvorão 340, 347, 348  
Adlerquelle 259  
Aggsbach 137, 198, 222  
Alberndorf 227, 283, 285, 288  
Alexeevsk I 176, 182, 186  
Algar de Cascais 340, 341  
Almonda 340, 341, 348  
Altamira 81  
Amalda 317  
Amalias (region of) 380, 381  
Ambrosio 92  
Andernach 283, 308  
Anecrial 338, 340, 341  
Anui 175-178  
Arbreda 329, 342  
Arcy-sur-Cure 92, 316, 317  
    Grande Grotte 87, 92, 99, 100, 320  
    Grotte du Renne 80, 137, 313, 316  
    Trilobite 137  
Arembovsky 189  
Arene Candide (*see* Grotta ...)  
Arka 287, 289  
Arta II 176, 179, 183, 188  
Arvenitsa 375, 376, 378, 379, 384  
Aschenstein 285, 288  
Aspelt 259  
Asprochaliko 376-380, 382-388, 390  
Aurignac 81  
Avdevo 25, 109, 111, 113-115, 117-119, 125, 126, 130, 131, 225  
Bacho Kiro 243, 283  
Balzi Rossi (Grimaldi) caves 5, 40, 41, 50, 81, 82, 96, 105-110, 112-116, 118-121, 136, 267, 320, 356, 359, 361, 364  
    Barma Grande 33, 37, 38, 40, 43, 47, 105, 108, 114, 137, 139, 261, 356, 361-364, 366  
    Grotta di Baouso da Torre 40, 43, 105, 356, 362  
    Grotta del Caviglione (= Grotte du Cavillon) 40, 105, 150, 356, 362-364  
    Grotta dei Fanciulli (= Grotte des Enfants) 33, 37, 38, 40, 43, 47, 78, 105, 114, 356, 359, 360, 362  
    Grotte du Prince 105, 108  
    Riparo Bombrini 356, 361  
    Riparo Mochi 105, 356, 359, 360, 365  
Barranc Blanc 317  
Baouso da Torre (*see* under Balzi Rossi)  
Belcayre 88, 92  
Beneito 317, 342  
Berekhat Ram 88  
Bereyokh 169  
Bhimbetka 88  
Bilancino 356, 361  
Bilzingsleben 88, 257, 259, 260, 264, 266, 308, 316  
Blanchard (*see* Abri ...)  
Blatec 220-223  
Bockstein-Törle 227, 249-252, 254, 257, 259, 261, 266, 267, 281, 283-287, 289, 290  
Bodrogkeresztur 232-237  
Bohunice 283  
Bořetice 150  
Boršice 198, 209, 220-223, 225  
Bouzil 321  
Bramford Road 300, 301  
Brassempouy 92, 118, 139, 320  
Breitenbach 281-286, 288, 290  
Brillenhöhle 137, 249-253, 257-259, 261, 263-266  
Brinzeni 287  
Brno 33, 81, 143, 150  
    Brno II 3, 143-150, 204, 226  
    Brno III 226  
Brno-Kohoutovice 227  
Brno-Stránská skála 227  
Bruniquel 33, 37, 40, 43, 47  
Bükk caves 231  
Bulhary 287  
Buraca Escura 338, 340  
Buraca Grande 340  
Buret' 25, 61, 176, 182, 184, 186, 189, 190  
Büs dei Lader 356, 363  
Byzovaya 17, 165-169  
Cabeço de Porto Marinho 338, 340, 344, 345, 347  
Cala delle Ossa 355, 356  
Caldeirão cave 25, 337-342, 346  
Caminade 329  
Cap Blanc 33, 37, 40, 43, 47  
Cariguela 341, 342  
Carreira 347  
Casa da Moura cave 338, 340, 344  
Casal do Cepo 340, 345, 348  
Casal do Felipe 340, 344-346  
Castanet 92, 329  
Castillo 329, 342  
Caviglione (*see* under Balzi Rossi)  
Cejkov 289  
Cellier 88, 92  
Cerrado Nova 345  
Certova pec 138  
Chancelade 33, 40, 43, 47



- Chaperon-Rouge I 343  
 Chikoi 188  
 Chitkan 176, 188  
 Cioclovina 33  
 Cirque de La Patrie 316  
 Ciuntu cave 287, 288  
 Columbeira 338  
 Combe-Capelle 39, 320  
 Combe Saunière 23  
 Corbiac 306, 316  
 Cosautsi 287, 288  
 Cougnac 5, 87, 92, 99, 100, 320  
 Cova da Moura 340  
 Cova Negra 341  
 Covão 340  
 Cro Magnon 33, 40, 42, 43, 47, 81, 320  
 Crvena Stijena 242, 243  
 Cuzoul de Vers 289  
 Divje Babe 241, 244  
 Dobritz 40  
 Dolní Věstonice 2, 3, 33, 37, 38, 40, 43, 98, 125, 138, 197-199, 202, 206-208, 225, 226, 234, 261, 287, 306  
     Dolní Věstonice I 25, 59-62, 67, 132, 138, 139, 149, 197, 199-203, 205-207, 209, 210, 220-223, 225, 226  
     Dolní Věstonice II 25, 33, 59-63, 67, 68, 138, 149, 197, 199-211, 222, 223, 226, 227  
     Dolní Věstonice III ('Rajny') 200, 207-209, 227  
 Domingo Garcia 90  
 Duruthy 313  
 Dvuglazka rock shelter 175, 178, 180  
 El Conde 92  
 El Parpalló 96, 317  
 Elaiochori 376, 380, 381, 384  
 Elea 380  
 Elid 385  
 Elnes 300, 301  
 Engis 300, 301, 305  
 Escoural cave 340, 343, 347  
 Esquicho-Grapaou 313  
 Estrada da Azinheira 340  
 Farincourt 40, 43  
 Feldberg (Steinacker) 271, 272  
 Figueira Brava cave 337, 338, 341, 343  
 Fischleitenhöhle 266  
 Fonds-de-Fôret 300, 301, 305  
 Fongal 92  
 Fontainhas (*see* under Gruta)  
 Fonte Santa 340, 344, 345, 348  
 Foresta Umbra 356, 360  
 Fosso di Pagliano 356, 361, 363  
 Foz do Enxarrique 341, 343  
 Foz Côa 90, 92  
     Còa valley 4, 340, 343, 347  
 Franchthi 244, 375-377, 380, 381, 383-387, 389-391  
 Francouzská Street (Brno II) 138, 143, 149, 150  
 Fuente del Salín 92, 95  
 Furadouro 340  
 Furninha 340  
 Gabillou 89, 100  
 Gagarino 25, 110, 113, 114, 118, 125, 130, 131  
 Galgenberg 88, 96, 100  
 Garchi I 165-169  
 Gargas 92, 95, 99, 262, 320  
 Gato Preto 340, 345, 347  
 Geissenklösterle 23, 88, 137, 138, 249-254, 257-267, 281-284, 286, 287, 288, 289  
 Goat's Hole (Paviland) 302  
 Gönnersdorf 139, 283, 308  
 Gorham's cave 342  
 Gough's Cave 3, 37  
 Gouran 118  
 Goyet 300-303, 305, 306  
 Gramat 37  
 Grub 222  
 Grimaldi (*see* Balzi Rossi)  
 Grossweikersdorf 288  
 Grotta delle Arene Candide 33, 37, 40, 43, 47, 114, 137, 139, 150, 320, 356, 359-362, 364  
 Grotta del Broion 356, 361, 363  
 Grotta di Cala delle Ossa 361  
 Grotta La Cala 136, 317, 321, 355, 356, 359, 360, 362, 365, 366  
 Grotta La Calanca 355, 356, 359, 362  
 Grotta di Castelcivita 356, 359, 362, 365  
 Grotta del Fossellone 356, 360-362  
 Grotta di S. Maria di Agnano 356, 361, 362  
 Grotta Paglicci 3, 40, 43, 47, 78, 262, 356, 359-362, 364-366  
 Grotta di Paina (Gr. Azzura) 356, 361, 363  
 Grotta di Trene 356, 363, 364, 366  
 Grotta delle Veneri 356, 359, 361-363, 365  
 Grotte Bayol 99  
 Grotte de la Betche-aux-Rotches (Spy) 301  
 Grotte Chauvet 6, 87-95, 97-100, 320  
 Grotte Cosquer 87, 92, 95, 99, 100, 320  
 Grotte des Cottès 313  
 Grotte des Enfants (*see* under Balzi Rossi)  
 Grotte d'Enlène 318  
 Grotte de Pech-Merle 87, 89, 92, 99, 100, 111, 320  
 Grotte de Pegourié 319  
 Grotte aux Points 92  
 Grotte du Renne (*see* under Arcy)  
 Grotte Walou (Trooz) 300-302, 305  
 Grotte XVI 326, 331  
 Grubgraben 137, 203, 209, 222, 227, 286-288  
 Gruta das Fontainhas 340, 341  
 Heddeshheim 271-273, 275, 277  
 Hidasnémeti 233-237  
 Hoedic 37  
 Hohle Fels 115, 138, 249-254, 257-261, 263, 265, 283-287, 289, 290  
 Hohlenstein-Bärenhöhle 254  
 Hohlenstein-Stadel 88, 100, 251, 254, 281, 283, 284  
 Hont 232-236  
 Huccorgne 300-306  
 Hyaena Den 302

- Igeteiskii Log I 176, 179, 181  
 Ilsenhöhle/Ranis 257, 259, 260  
 Ingendorf 271, 272  
 Istállóskő cave 231, 233, 283  
 Isturitz 137, 138, 261, 315, 320  
 Jaroslavice 197, 201  
 Jarošov 198, 203, 207, 209  
 Jászfelsőszentgyörgy 287, 289  
 Jaulan 321  
 Jazygia 232  
 Jiřice 150  
 Jovelle 92  
 Jundrov 227  
 Kadar 243, 244  
 Kamenka I 175, 179, 182, 188, 189  
 Kammen 244  
 Kapova cave 169  
 Kara-Bom 25, 177, 189  
 Kara-Tenesh 177, 189  
 Karolín 227  
 Kashtanka I 176, 179-181, 189  
 Kašov 202, 287, 288  
 Kastelhöhle-Nord 286  
 Kastritsa 376-379, 383-388, 390, 391  
 Kastron (region of) 380, 381  
 Katsika 378, 379, 384  
 Kebara 79  
 Keilberg-Kirche 281, 283, 284, 288  
 Kemathenhöhle 253, 266  
 Kent's Cavern 23, 300-302, 304, 305  
 Kephalaria 375-379, 381, 384, 386  
 Khotylevo 113, 114  
 Khotilevo 2 125, 126, 130, 131  
 Klissoura 378, 379, 384, 390, 391  
 Klithi 376, 378, 379, 386  
 Kniegrotte 284, 286, 287  
 Königsberg 259  
 Kokkinopilos 376, 378, 379, 384  
 Kolding Ådal 157  
 Konitsa 378, 379  
 Kopais 378, 379  
 Korlát 233-236  
 Korman IV 125  
 Kostenki 25, 33, 40, 109, 113-115, 117-119, 125, 150, 166, 190, 358  
     Kostenki 1 (I) 69, 111, 113, 125-132, 150, 166, 168, 169  
     Kostenki 2 149  
     Kostenki 4 (IV) 2, 130, 131, 150, 169, 204, 275  
     Kostenki 11 130, 131  
     Kostenki XII 168  
     Kostenki 18 149  
 Kraków 222  
 Kraków Spadzista Street 22, 23  
 Krems 283  
 Krems-Hundssteig 138  
 Krems-Wachtberg 198, 205  
 Ksar-'Aqil 136  
 Kůlna cave 220  
 Kunalei 175, 179, 183, 188, 189  
 Kurtak IV 176, 178, 179, 181, 189  
 Kyjov 198  
 La Baume Latrone 92, 99  
 La Cala (*see* Grotte ...)  
 La Cavaille 92  
 La Chapelle-aux-Saints 78  
 La Chèvre 329  
 La Cotte de St. Brélade 79  
 La Crouzade 320  
 La Croze à Gontran 88, 92  
 La Ferrassie 23, 24, 88, 92, 313, 314, 316, 318, 320, 326, 328-331  
 La Font-Robert 316, 330  
 La Grande Roche de la Plématrie 313  
 La Gravette 261, 316, 328, 330  
 La Lauouza 313  
 La Marche 137, 139  
 La Rochette 40, 47, 329  
 La Salpêtrière 313, 316, 317, 319  
 La Souquette 92  
 La Station de l'Hermitage 300-302, 305, 306  
 La Tête du Lion 92  
 La Vigne Brun 22, 316, 321  
 La Viña 92  
 Labattut 92, 95  
 Lagar Velho 4  
 Langmannersdorf 227  
     Langmannersdorf A 285, 288  
     Langmannersdorf B 285, 288  
 Lapa do Anecrial 340, 347  
 Lapa dos Furos cave 337, 338, 341  
 Lapa do Picareiro 348  
 Lapa da Rainha 338, 340  
 Lapa do Suão 340  
 Lartet 92  
 Lascaux 87, 89, 93  
 Lassac 289  
 Laugerie Basse 33, 43, 139, 301  
 Laugerie Haute 92, 289, 307, 317, 319, 328, 331  
 Laussel 92, 110  
 Le Bichon 37-40  
 Le Blot 316, 319, 320  
 Le Cirque de la Patrie 300, 301, 308  
 Le Facteur (*see* Abri du Facteur)  
 Le Flageolet 24, 316, 318, 319, 326, 329-331  
 Le Fourneau du Diable 92  
 Le Marronnier 320  
 Le Moustier 328  
 Le Peyrat 37, 40  
 Le Piage 329  
 Le Placard 33, 40, 42, 43, 92  
 Le Poisson 92  
 Lèches 321  
 Lehringen 63  
 Les Battuts 330  
 Les Bernous 88, 92

- Les Trois-Frères 92, 95, 99, 100  
 Les Vachons 316, 320  
 Lespugue 110, 112, 114, 117, 118, 139, 320  
 Lhotka 227  
 Lipa 202  
 Lommersum 281-283, 285, 290  
 Loukaiti 380, 381  
 Lupenska 243  
 Lušćić 243-245  
 Luxembourg 301  
 Lyngby 261  
 Madaras 232, 287, 289  
 Magdalenahöhle 259, 271, 272, 274-277, 284, 286, 287, 290, 308  
 Maina 69  
 Mainz-Linsenberg 137, 257, 259, 261, 271-277, 281, 308  
 Maisières-Canal 271, 300-306, 308, 313, 314, 316, 330  
 Makarovo 176, 186  
 Mala Gradina 244  
 Malaia Syia 25, 176, 178, 180, 189  
 Maldidier 326  
 Mallaetes cave 341  
 Mal'ta 25, 61, 109, 118-120, 173, 175, 176, 179, 181-187, 189, 190  
 Mamutowa cave 118, 198, 261  
 Mamontovaya Kurya 165-170  
 Maritza 33  
 Masnaigre 139  
 Masterov Kliuch 176, 179, 188  
 Mátraháza 233-236  
 Mauern 110, 113, 116, 119, 252  
 Mavri Myti 376, 380, 381  
 Mavrommati 390  
 Mayenne-Sciences 92  
 Mazouco 340  
 Medvezhya cave 165-167, 169  
 Megyaszó 232-237  
 Mel'nichnoe 176, 188  
 Mende brickyards 232  
 Meret 321  
 Metternich 259, 271-273, 275-277, 284  
 Mežirič 202  
 Milovice 138, 149, 197-199, 201, 203, 209, 220, 222, 225-227  
     Milovice I/G 220-225  
     Milovice I/North 221-223, 225  
 Mítoc 24, 125, 287  
 Mittlere Klause 249, 257, 265  
 Mladec 33, 220-223  
 Modriča Jama 241  
 Mogyorósbánya 232, 287, 289  
 Moha (*see also* Trou du Chena) 303  
 Molodova 79  
     Molodova V 23, 25, 125, 199, 201, 272, 314  
 Monte Avena 356, 360  
 Monte Longo 360  
 Monte da Fainha 340  
 Montpazier 320  
 Moravany 198, 222  
     Moravany-Lopata 138  
     Moravany-Podkovicca 138  
     Moravany-Zakovska 287, 289  
 Morin 342  
 Muffendorf 259, 271, 272  
 Müllheim 250, 251  
 Munzingen 286, 289  
 Nadap 233-237  
 Napajedla I 220-223, 225  
 Napajedla III 225  
 Nepa 175, 182, 186  
 Neuessing 40, 43, 47  
 Nitra 222  
 Novoselovo XIII 176, 179-181, 189  
 Obere Klause 257, 259, 261, 263, 264, 284, 286, 287  
 Oberkassel 33, 40, 43, 47  
 Obernederhöhle 266  
 Oblazowa 138, 283  
 Oelknitz 308  
 Ofnet 266  
 Olival da Carneira 345, 347  
 Ondratice II 227  
 Oreille d'Enfer 92  
 Ortuocchio 33  
 Ostuni 40, 137, 138  
 Oullen 92  
 Oullins 99  
 Ourão 340  
 Ovca Jama 243  
 Paglicci (*see under* Grotta ...)  
 Pair-non-Pair 92, 139  
 Parabita 40, 47  
 Passal 340  
 Parpalló (*see under* El ...)  
 Pataud (*see under* Abri ...)  
 Paviland 4, 40, 43, 47, 79, 150, 299-308, 320  
 Pavlov 1, 2, 33, 40, 41, 43, 61, 125, 197-199, 203, 206, 208, 222, 223, 225, 226, 234, 237, 261, 287, 306  
     Pavlov I 25, 59-63, 67, 132, 138, 197, 200-206, 209-211, 219-222, 225-227  
     Pavlov II 59, 60, 138, 197, 205, 209, 210, 220-223, 314  
     Pavlov III 208  
 Pech-Merle (*see under* Grotte ...)  
 Pedreira de Salemas cave (*see* Salemas)  
 Pego do Diabo cave 339-341  
 Pégourié 289  
 Peneios 378, 379, 381, 384, 385  
 Pendo 342  
 Peniche 337  
 Peskö 283  
 Petřkovicce 59, 60, 197-199, 201, 202, 205-207, 222, 225  
     Petřkovicce I 202, 206, 209, 210, 220-223, 225, 227  
     Petřkovicce II 220, 221  
 Picareiro 340  
 Picos 340  
 Piekary 198, 227  
 Pinhal da Carneira 347  
 Pin Hole 300, 301, 305

- Plaidter Hummerich 271-274, 277  
 Plasenn-al-Lomm 300, 305, 316  
 Poço Velho 340  
 Podzvonkaia 188  
 Ponte di Pietra 356, 363  
 Potočka 241  
 Předmostí 33, 40, 41, 59-61, 81, 113, 115, 138, 149, 150, 197-202,  
 204, 205, 207, 209, 220-223, 225, 226, 261, 287, 305, 306  
 Preveza 384, 385  
 Püspökhatvan 232-236  
 Pymva Shor I 165-167, 169, 170  
 Qafzeh 78  
 Quincay 317  
 Quneitra 88  
 Radosiná cave 198  
 Rajny (*see under Dolní V.*)  
 Ranis (*see Ilsenhöhle*)  
 Räuberhöhle 259  
 Rastel 37  
 Reclau viver 317, 342  
 Regensburg 266  
 Renancourt-lès-Amiens 300, 301  
 Rhens 259, 271-273, 275-277  
 Ried (Dollnstein) 257, 259  
 Riera 317  
 Riparo Continenza 40, 47  
 Riparo di Fontana Nuova 80, 356, 361, 362  
 Riparo di Fumane 136, 356, 359-363, 365  
 Riparo Tagliente 40, 47  
 Riparo Villabruna 40  
 Robin Hood's cave 302  
 Roc de Combe 83, 313, 314, 326, 329  
 Roc de Sers 92  
 Roche de Lalinde 139  
 Roche à Pierrot 313  
 Rollsbo 157  
 Romanelli 40, 43, 47  
 Romani 136  
 Romhány 233-236  
 Romito 37, 40, 43, 47  
 Rosenburg 285, 288  
 Roucadour 92  
 Rouffignac 93, 98  
 Sabanikha 176, 178-180  
 Sagaidak I 25  
 Ságvár 232, 287, 289  
 Sajószentpéter 233-236  
 Salching 249-251, 254, 257-260, 264, 266  
 Salemas cave 338-341, 344, 346  
 Salto do Boi 340, 345  
 San Teodoro 33, 40, 47  
 Šandalija 241-243, 245  
 Savignano 110, 113, 116, 356  
 Schöningen 63  
 Seest 157  
 Seidi 375-379, 384, 386, 390  
 Seloutky 227  
 Serino 356, 359, 360, 365  
 Sesselfels cave 16  
 Setubal 96  
 Shanidar 78  
 Shestakovo 176-178, 180, 189  
 Shishkino VIII 176, 179, 186  
 Siega Verde 90  
 Sireuil 109, 320  
 Sirgenstein 249, 257-259, 263, 265, 266  
 Skhul 78  
 Slatinice 227  
 Sokhatino 175, 183, 188, 189  
 Solutré 81, 316  
 Sosnovyi Bor 176, 182, 186, 189  
 Spadzista 198, 201, 227, 287  
 Spiliaion 376, 378, 379, 384  
 Spitzbubenhöhle 289  
 Sprendlingen 137, 257, 259, 271-277, 284  
 Spy 300-306, 308  
 Spytihněv 149, 198, 226  
 St. Germain-la-Rivière 33, 37, 40, 43, 47, 150  
 Stadice 227  
 Station de la Pente des Brosses 319  
 Steinacker 249, 257-260, 263, 265, 266, 271  
 Stetten (*see Vogelherd*)  
 Stillfried 222  
 Stránská skála 283  
     Stránská skála IIa 199  
     Stránská skála IIIa 199  
     Stránská skála IV 203, 287, 288  
 Studenoe II 176, 188  
 Sungir' 25, 40, 61, 118, 125, 136, 139, 166, 168, 169, 190  
 Svitavka 33  
 Swanscombe 63  
 Szob 274  
 Talitsky 165-167  
 Tayac 321  
 Temnata 387  
 Terra Amata 79  
 Terra do José Pereira 340, 345  
 Terra do Manuel 339, 340, 345-347  
 Teviec 37  
 Theopetra 375, 376, 378, 379, 384, 385, 390, 391  
 Tolbaga 188, 189  
 Tournal 136  
 Trasimeno 113, 116, 356, 361  
 Tréfonds des Trois-Frères (*see under Les ...*)  
 Trenčianské Bohuslavice 198, 202  
 Trou du Chena (Moha) 300, 301, 305  
 Trou Magrite 300, 301, 304, 305  
 Trou du Moha 305  
 Trou Walou 303, 313  
 Tuc d'Audoubert 95  
 Tursac 113, 116, 320  
 Tuto de Camalhot 139  
 Ulbrich 378, 379, 384  
 Unkelbach 259, 271, 272

- Určice 227  
 Ust'Uda 150, 177  
 Ust'Karakol 175, 177, 178, 180, 189  
 Ust'Kova 176, 179, 182, 184, 186, 190  
 Vado all'Arancio 40  
 Vale Almoinha 339, 340, 345  
 Vale Comprido 317, 340, 344, 345, 347  
 Vale de Mata 345  
 Vale de Porcos 340, 345, 347  
 Vales 340  
 Vales da Senhora da Luz 345  
 Varvarina Gora 188  
 Vascas 340  
 Vedrovice Ia 227  
 Velika Pečina 241, 243-245  
 Venray 300, 301  
 Verseg 233-236  
 Veternica 241  
 Veyrier 40, 43, 47  
 Vico del Gargano 356, 360  
 Vignaud 92  
 Vindija 241, 243-245  
 Visoko Brdo 244  
 Vogelherd 88, 89, 251, 254, 281, 283, 284, 290, 304  
 Vogelherd (Stetten) 33, 42, 43  
 Weinberg 113  
 Weinberghöhle 249-254, 257-259, 261, 263-266, 284, 286, 287  
 Welschbillig 271, 272  
 Wiesbaden-Adlerquelle 271, 272, 274-277  
 Wiesbaden-Igstadt 282, 285-288, 290, 308  
 Wildscheuer 259, 271, 273, 281-283  
     Wildscheuer III 282, 283, 285, 286  
     Wildscheuer IV 272, 275-277, 284  
 Willendorf 113, 114, 117, 118, 138, 198, 199, 234, 236, 237, 261, 287  
     Willendorf I 202  
     Willendorf II 3, 137, 138, 199-204, 220, 222, 223  
 Zafarraya cave 341, 342  
 Zakovska 138  
 Zaozerye 168  
 Zhoukoudian Upper Cave 190  
 Zlaty Kun 33  
 Zobiste 243, 244  
 Zupanov Spodmol 242, 243

## colophon

- wordprocessing

*Olga Yates*

- scanning & imaging of photographic material

*Jan Pauptit*

- editing, styling & draughting of maps, graphs, diagrams and tables\*
- imaging & lay-out of artefact drawings and photographic illustrations\*\*
- typographic design & lay-out of the printed interior
- cover-design & -realisation for the ESF hardback edition

*Henk de Lorm*

- technical support & advice

*Bruno Vanden Eynde and Freddy Persijn*

- pre-press & printing

*Oriëntaliste, Leuven*

- binding

*Binderij Callenbach b.v., Nijkerk*

\* Table 2 on page 360 by M. Mussi.

\*\* The original pen-and-ink artefact drawings as well as the original photographs were made by various, mostly anonymous artists and photographers. Although not referred to individually in this colophon, we wish to acknowledge their substantial contribution to the visual presentation of this book.











