



Universiteit
Leiden
The Netherlands

Contents

Unknown,

Citation

Unknown,. (1982). Contents. *Analecta Praehistorica Leidensia* Xv, 15, 10. Retrieved from <https://hdl.handle.net/1887/27918>

Version: Not Applicable (or Unknown)

License: [Leiden University Non-exclusive license](#)

Downloaded from: <https://hdl.handle.net/1887/27918>

Note: To cite this publication please use the final published version (if applicable).

ANALECTA
PRAEHISTORICA
LEIDENSIA

1982



XV

ANALECTA PRAEHISTORICA LEIDENSIA

XV

ANALECTA PRAEHISTORICA LEIDENSIA

XV

PUBLICATIONS OF THE INSTITUTE OF PREHISTORY
UNIVERSITY OF LEIDEN

PREHISTORIC SETTLEMENT PATTERNS
AROUND THE SOUTHERN NORTH SEA

Papers presented at a colloquium, held in honour of
Professor Dr. P.J.R. Modderman, Leiden,
3-7 May 1982



1982

LEIDEN, UNIVERSITY PRESS

This volume is published with a grant of the foundation Leids Universiteits Fonds

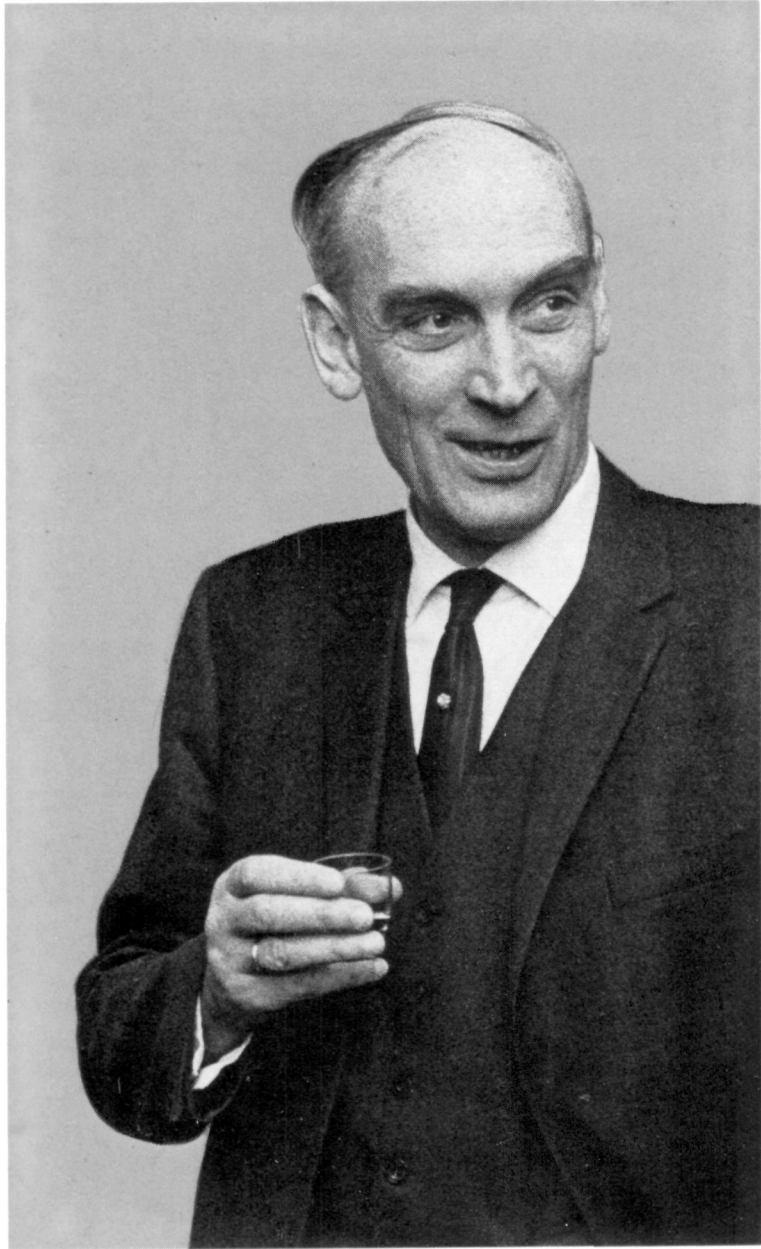
ISBN 90 04 07 148 2

Copyright
Printed in The Netherlands

TABLE OF CONTENTS

Dedication

J. Lüning, Research into the Bandkeramik Settlement of the Aldenhover Platte in the Rhineland	1
C.C. Bakels, The Settlement System of the Dutch Linearbandkeramik	31
M. Ilett, C. Constantin, A. Coudart and J-P. Demoule, The late Bandkeramik of the Aisne Valley: Environment and spatial Organisation	45
Torsten Madsen and Helle Juel Jensen, Settlement and Land Use in Early Neolithic Denmark	63
J.A. Bakker, TRB Settlement Patterns on the Dutch sandy soils	87
Francis Pryor, Problems of Survival: later prehistoric Settlement in the southern East Anglian Fenlands	125
O.H. Harsema, Settlement Site Selection in Drenthe in later prehistoric times: criteria and considerations	145
Barry Cunliffe, Settlement Hierarchy and Social Change in Southern Britain in the Iron Age .	161
A.G. Sherratt, Concluding remarks	182



DEDICATION

From 3 - 7 May 1982 some 40 archaeologists from Belgium, Denmark, England, France, Western Germany and the Netherlands were invited to attend a conference on the subject: Prehistoric Settlement Patterns around the southern North Sea. This conference was organised by the Institute for Prehistory of the Leiden University on the occasion of the retirement of

Pieter Jan Remees Modderman

since 1962 Professor in Prehistory at the University.

*Discussions during the conference were centered on twelve papers presented by as many colleagues from around the southern North Sea; of these papers eight are presented here in this special volume of *Analecta Praehistorica Leidensia*. We gratefully dedicate this volume to the man who founded the Leiden Institute and this series, our teacher Professor Dr. P.J.R. Modderman*

C.C. Bakels

M.E.Th. de Grooth

L.P. Louwe Kooijmans

G.J. Verwers

CONTRIBUTORS TO THIS VOLUME

C.C. Bakels
Instituut voor Prehistorie
Postbox 9515
2300 RA Leiden, Netherlands

J.A. Bakker
A.E. van Giffen Instituut
voor Prae- en Protohistorie
Singel 453
1012 WP Amsterdam, Netherlands

B.W. Cunliffe
Institute of Archaeology
36 Beaumont Street
Oxford, OX1 2PG
England

O.H. Harsema
Biologisch-Archaeologisch Instituut
Poststraat 6
9712 ER Groningen, Netherlands

M. Ilett, C. Constantin, A. Coudart &
J-P. Demoule
C.N.R.S. Unité de Recherche
Archéologique No. 12
3, Rue Michelet
750006 Paris
France

J. Lüning
Seminar für Vor- und Frühgeschichte
Universität Frankfurt
6 Frankfurt a.M.
Arndtstrasse 11
West-Germany

T. Madsen & H. Juel Jensen
Institut for forhistorisk arkaeologi
Aarhus Universitetet
Moesgård
DK-8270 Højbjerg
Denmark

F. Pryor
The Welland Valley Project
Sycamore Farm House
Seadyke Bank
Wisbech St. Mary
Wisbech, Cambridgeshire
England